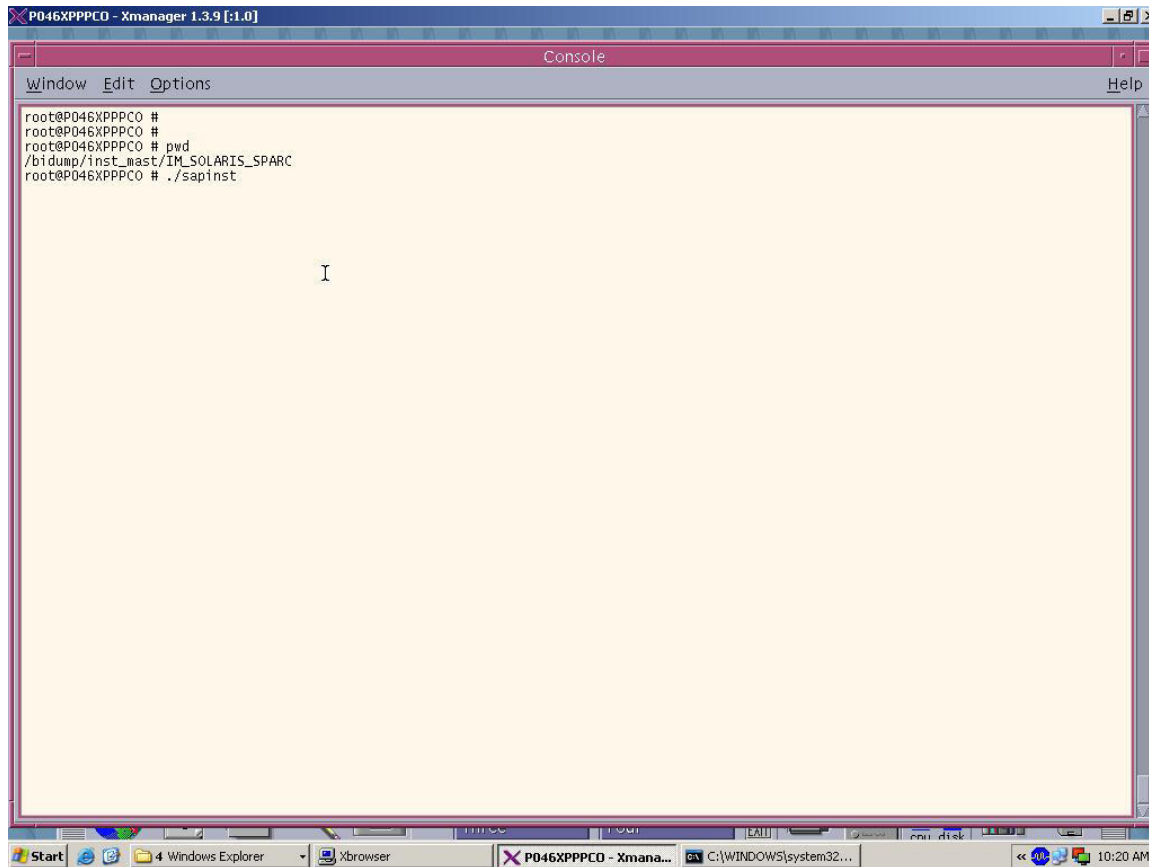


**JAVA ADDIN INSTALLATION**  
*Documentation*

# JAVA ADDIN INSTALLATION

---

1. Convert the databsae to UTF8 (Note 669902)
2. Remove all unwanted files from /sapmnt/SID
  - a. Check for the spool file in /sapmnt/SID/global. Delete all batch job logs.
3. set the rdisp/msserv\_internal profile parameter as 4710
4. set the rdisp/msserv as sapmsSID
5. Installation of SCS Instance.

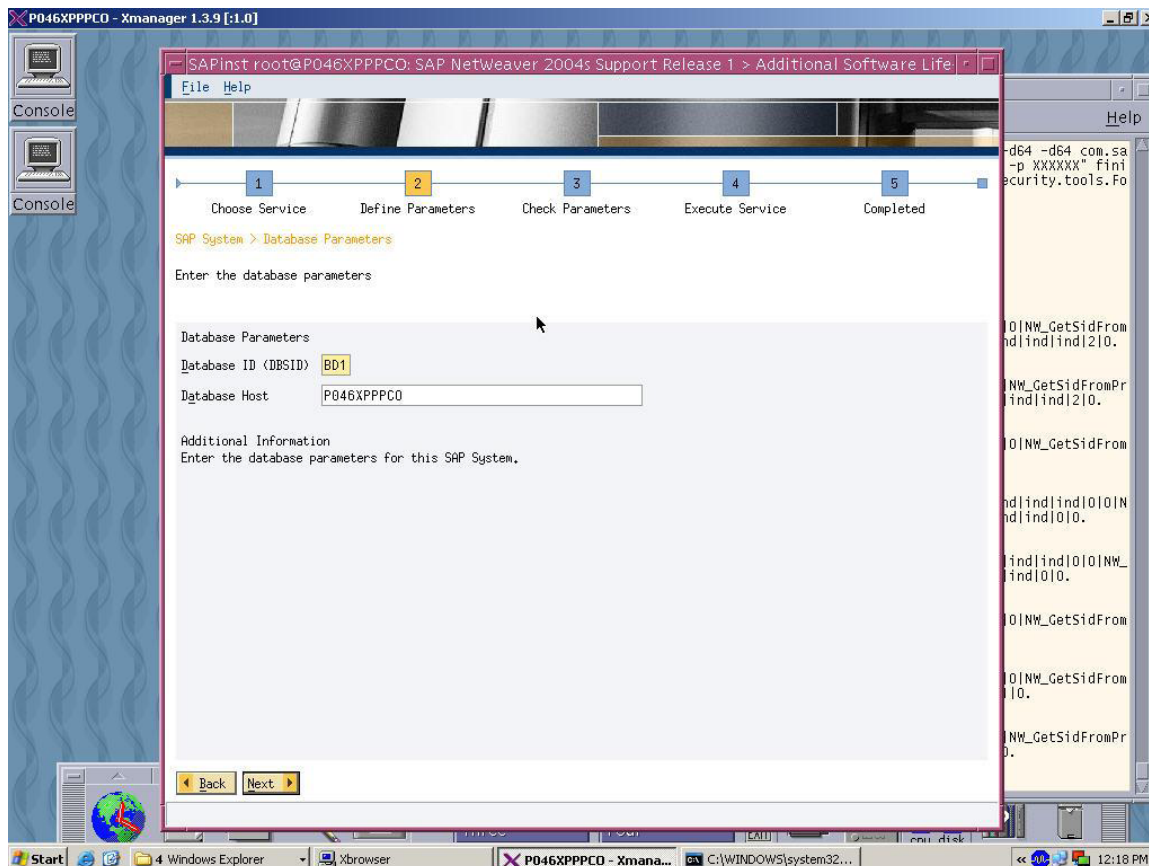
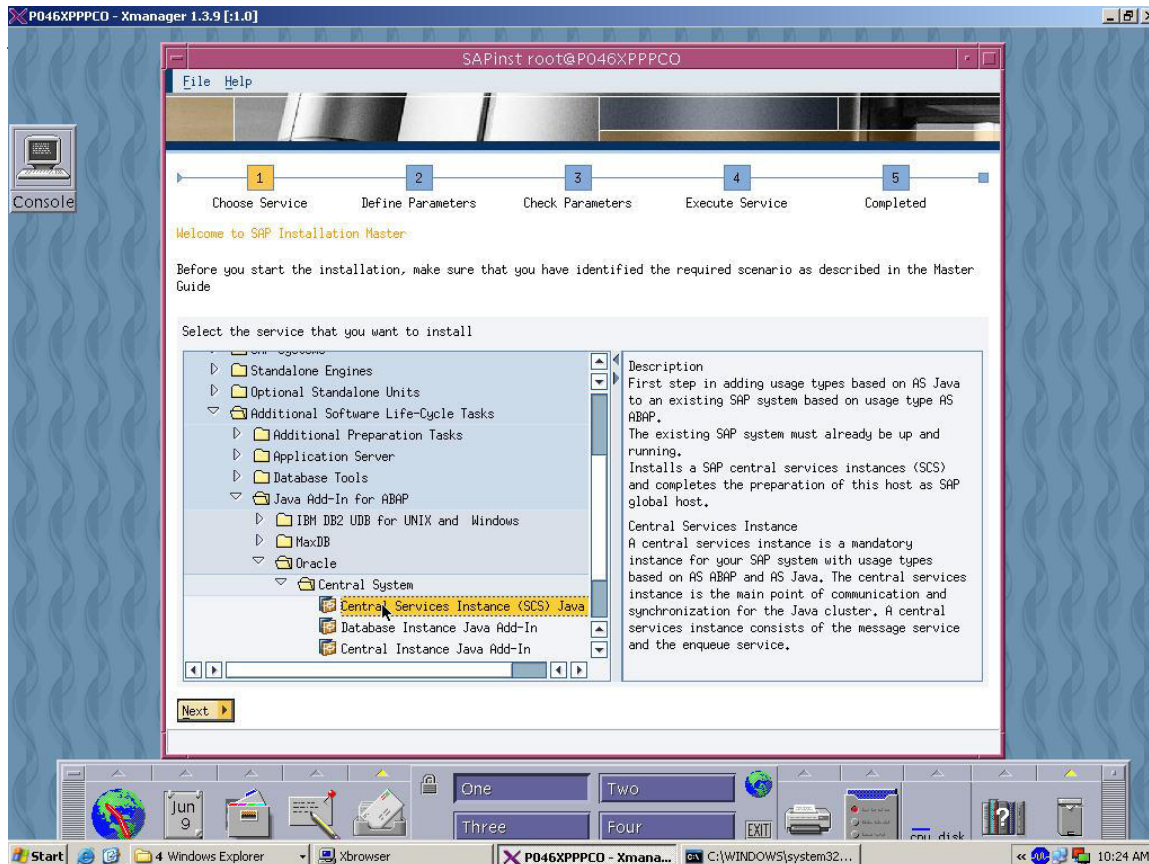


The screenshot shows an Xmanager window titled "P046XPPPC0 - Xmanager 1.3.9 [1.0]". Inside the window is a terminal titled "Console" with a menu bar containing "Window", "Edit", "Options", and "Help". The terminal displays a root shell session with the following commands and output:

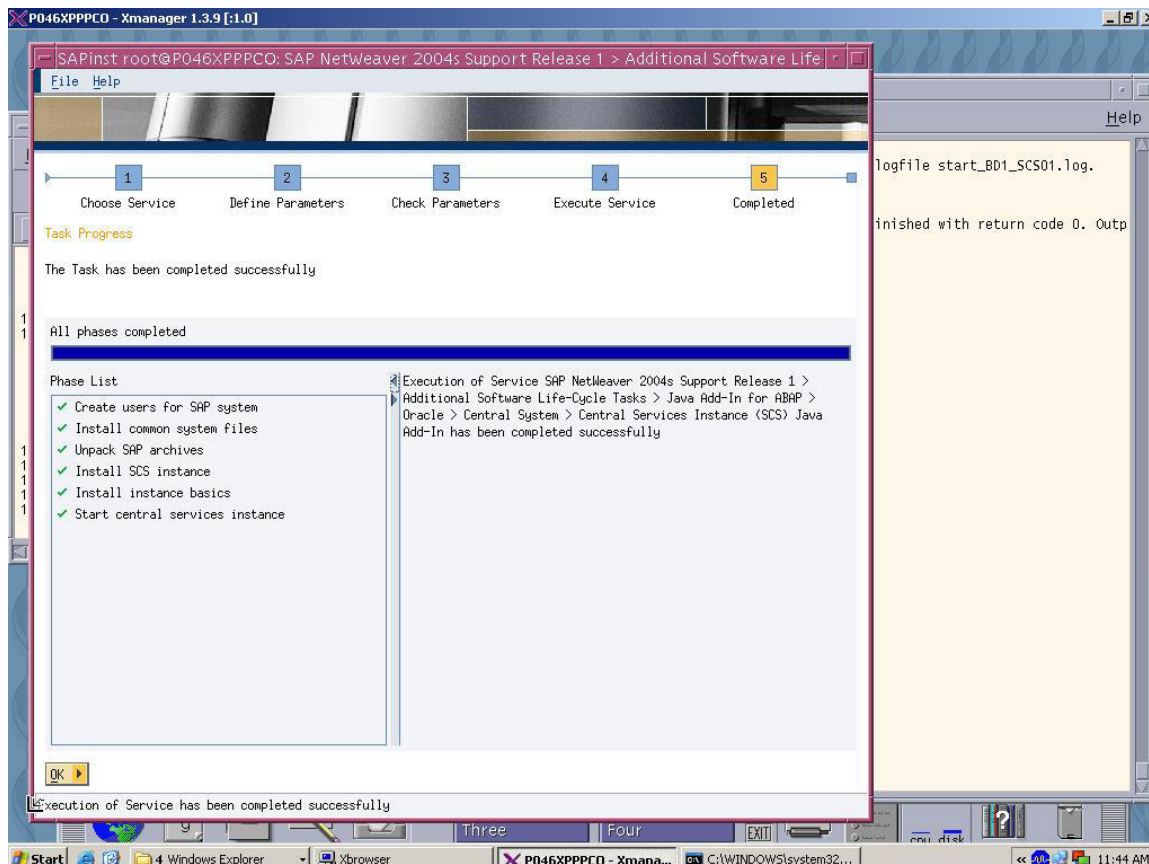
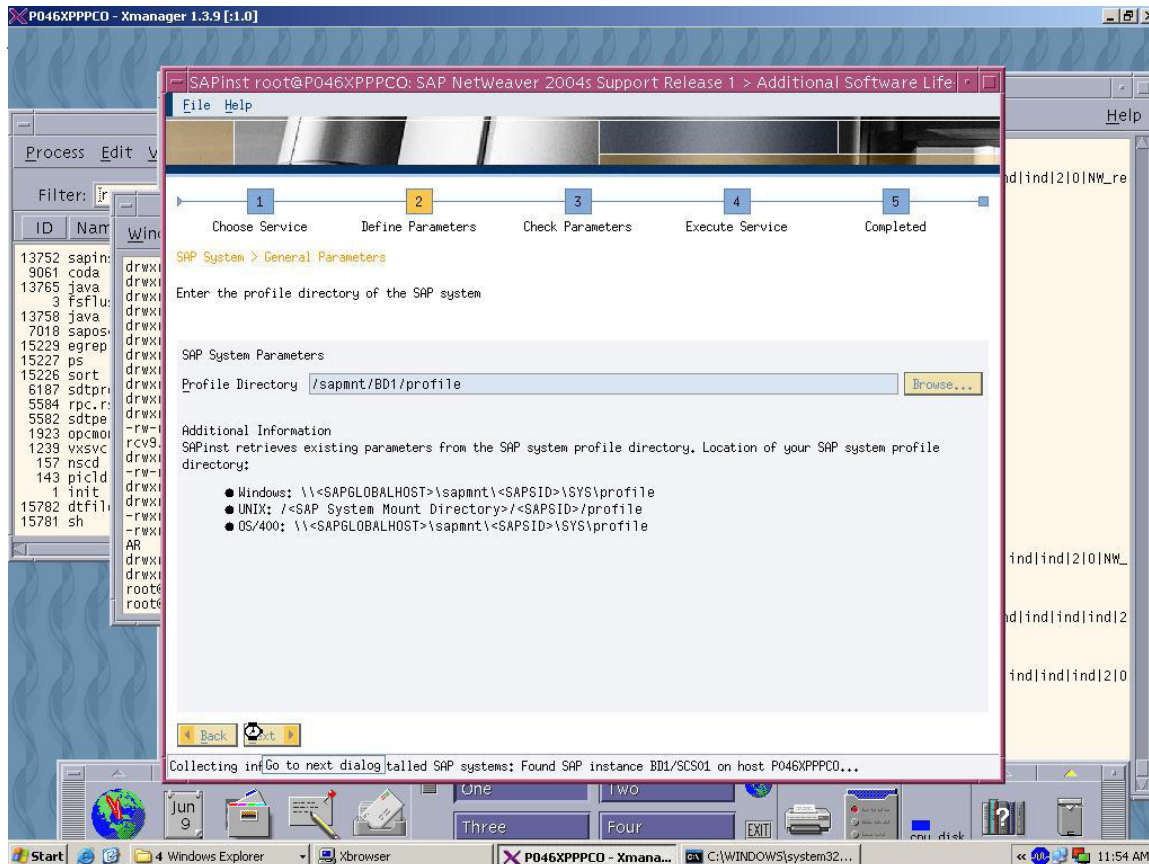
```
root@P046XPPPC0 #  
root@P046XPPPC0 #  
root@P046XPPPC0 # pwd  
/bidump/inst_mast/IM_SOLARIS_SPARC  
root@P046XPPPC0 # ./sapinst
```

The terminal window is open on a Windows desktop. The taskbar at the bottom shows the Start button, several icons, and open applications including "Windows Explorer", "Xbrowser", and the Xmanager window. The system clock in the bottom right corner indicates the time is 10:20 AM.

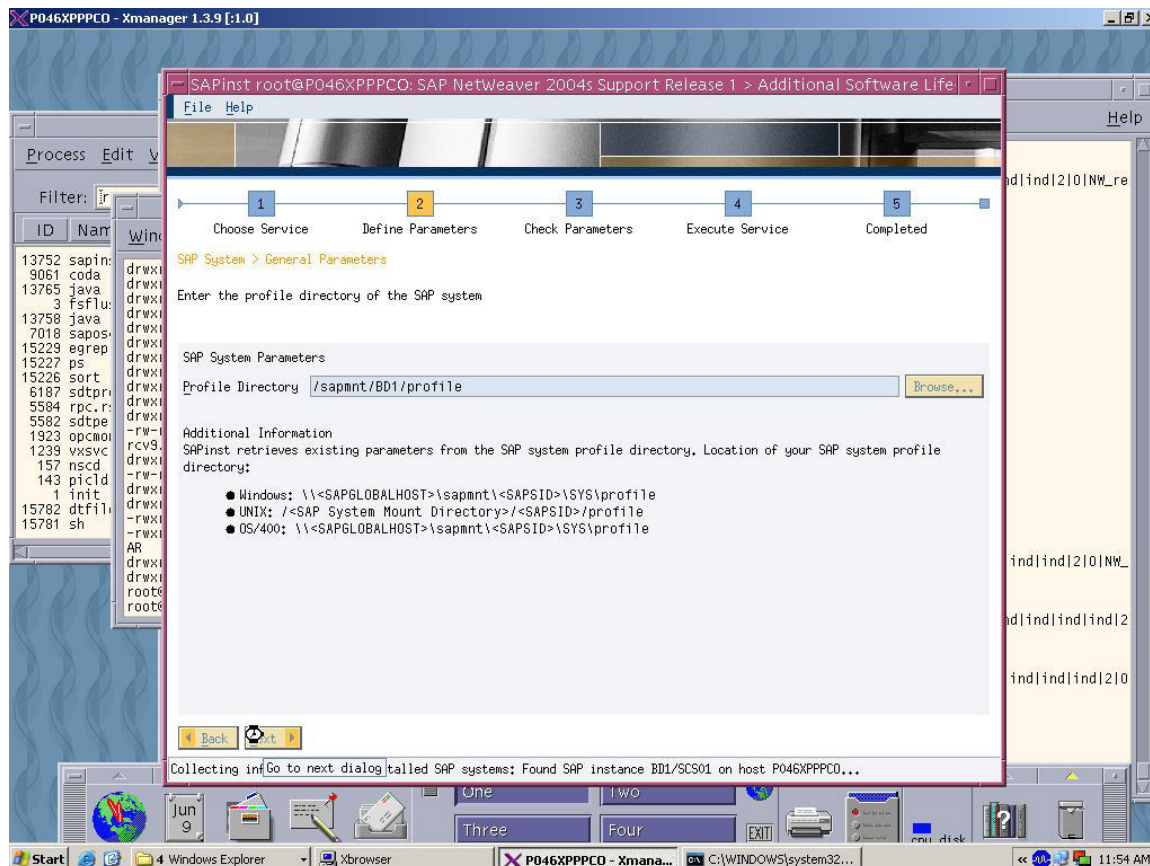
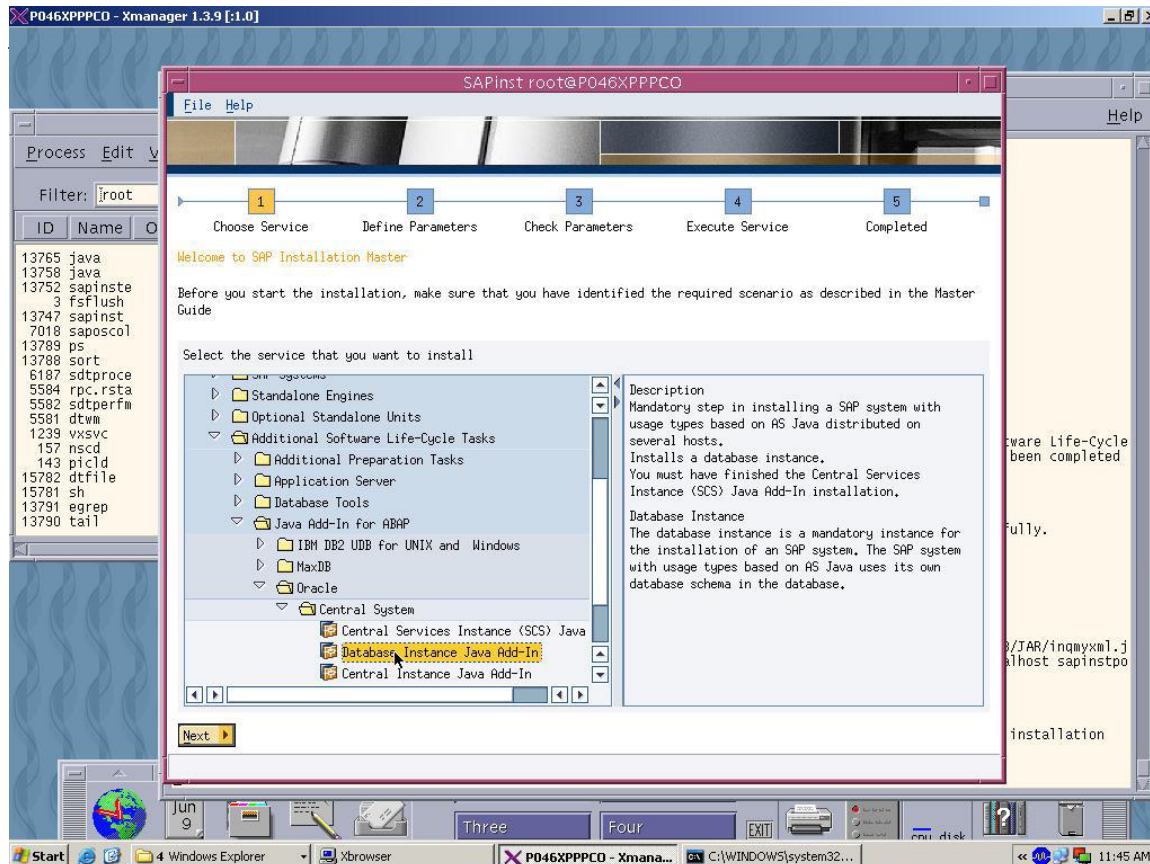
# JAVA ADDIN INSTALLATION



# JAVA ADDIN INSTALLATION

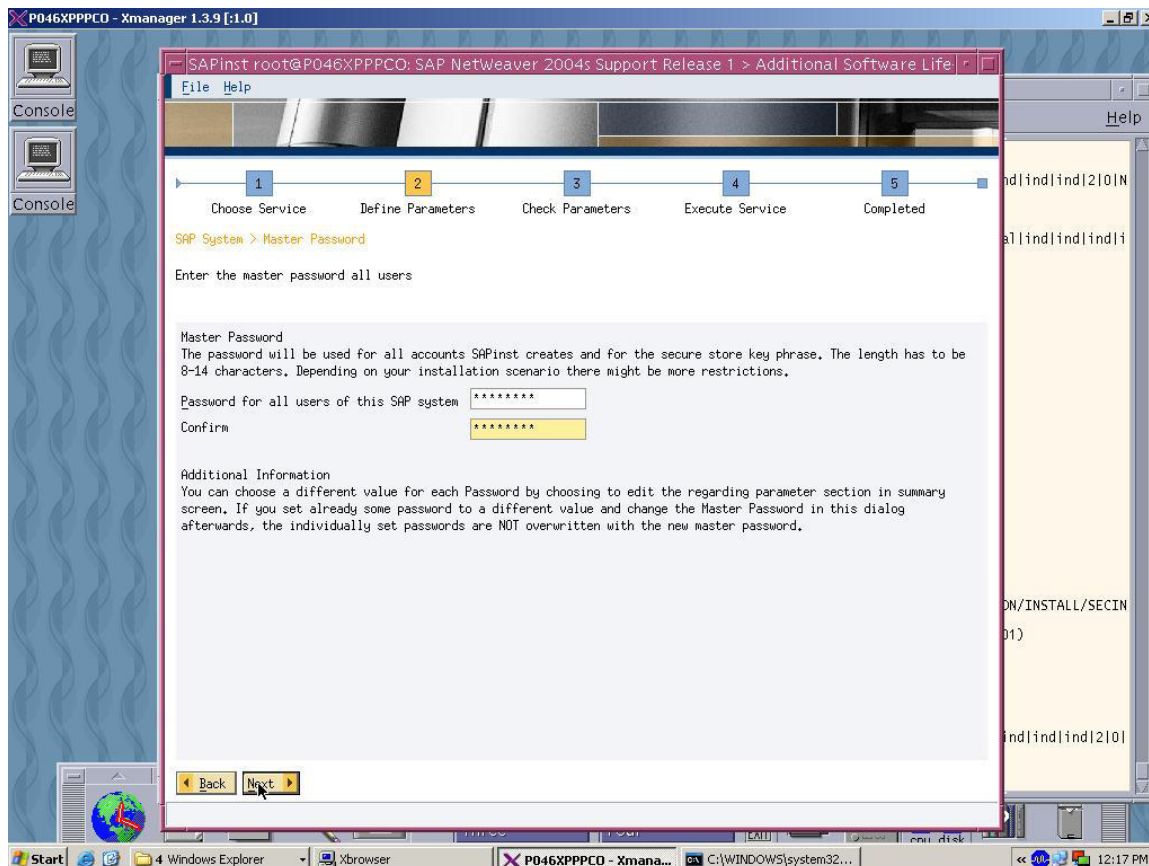
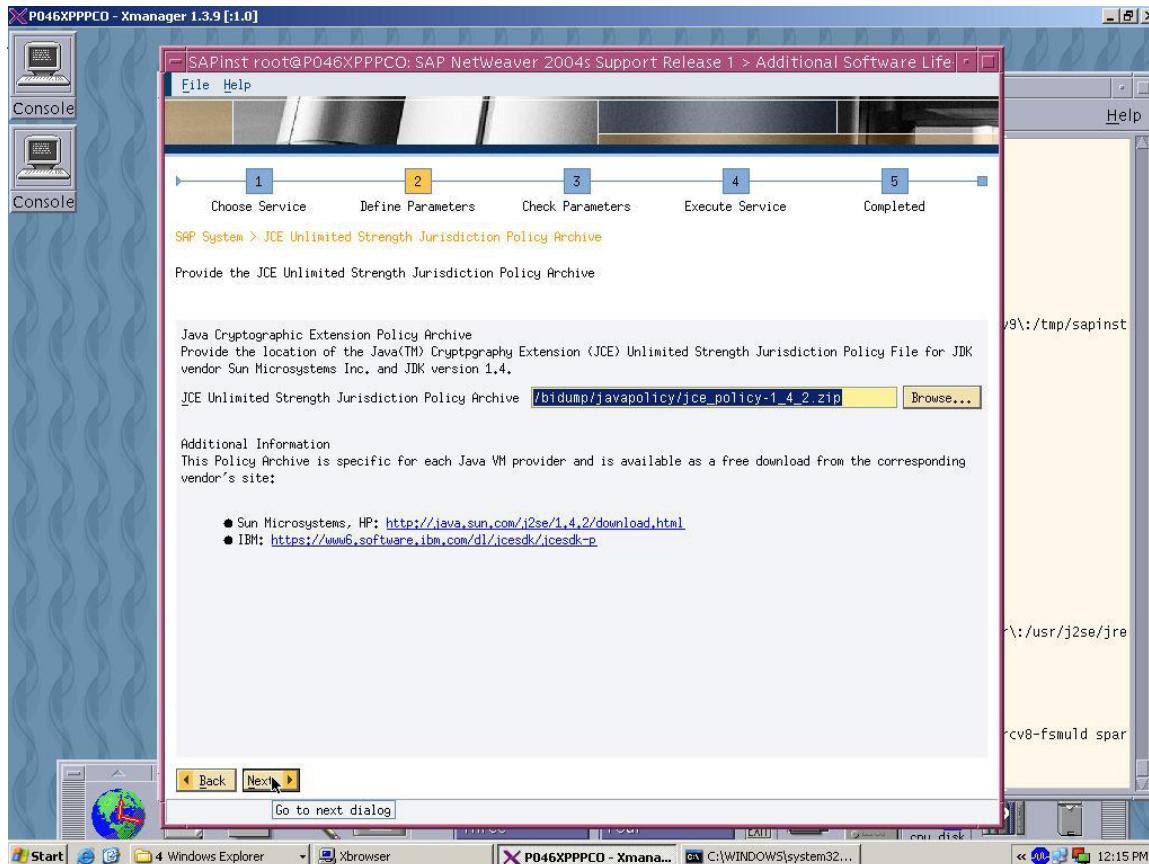


# JAVA ADDIN INSTALLATION

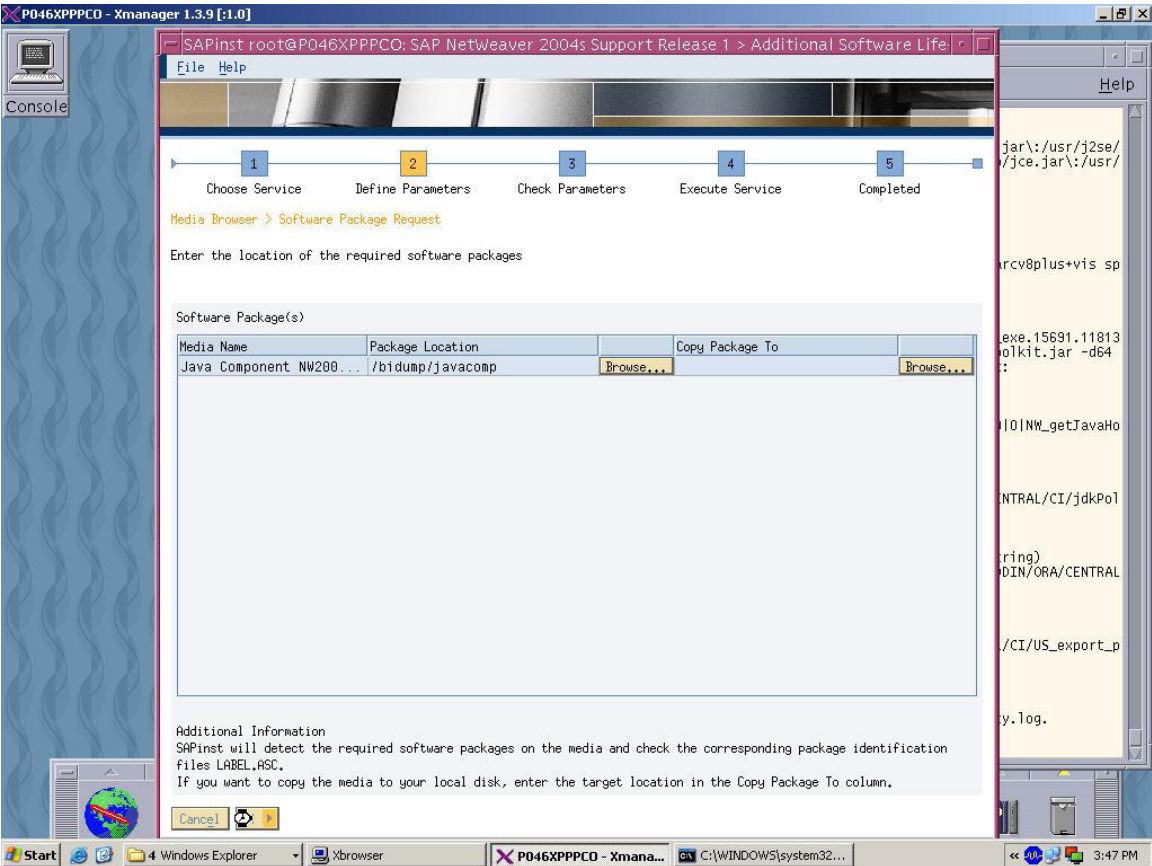
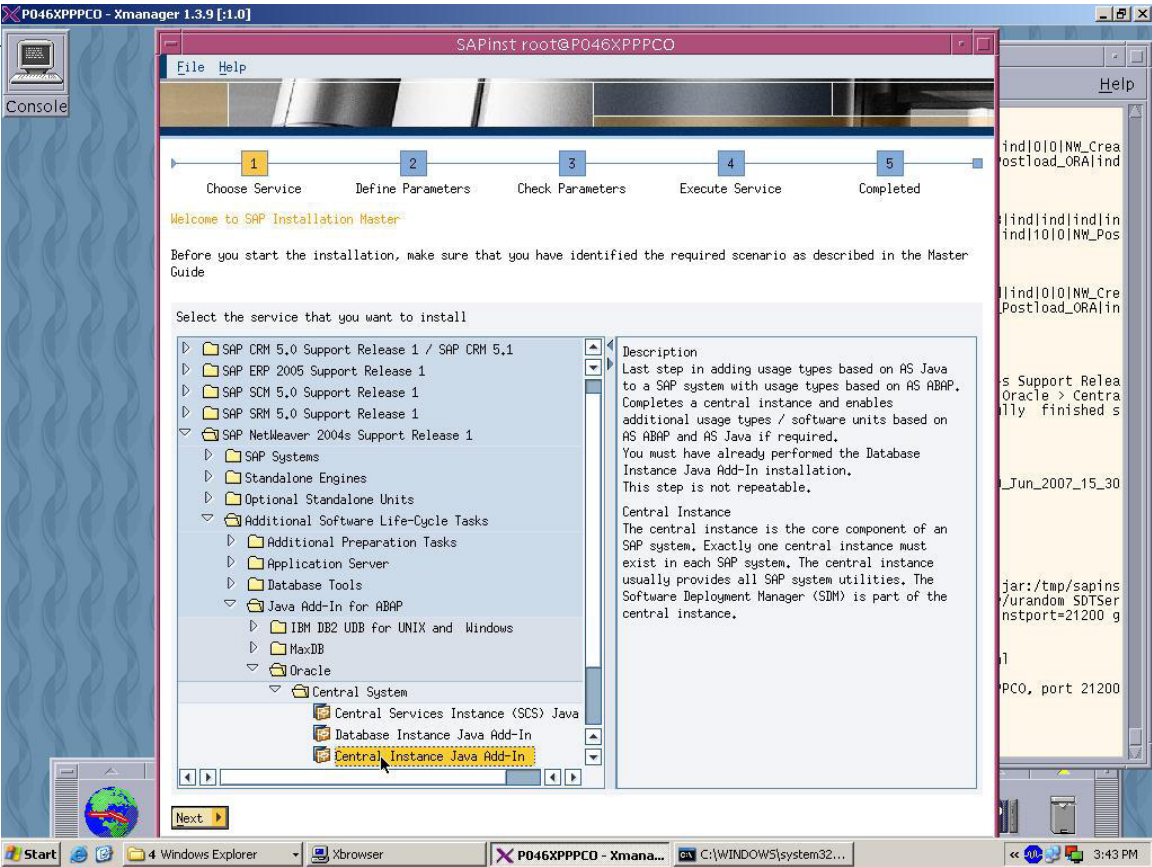




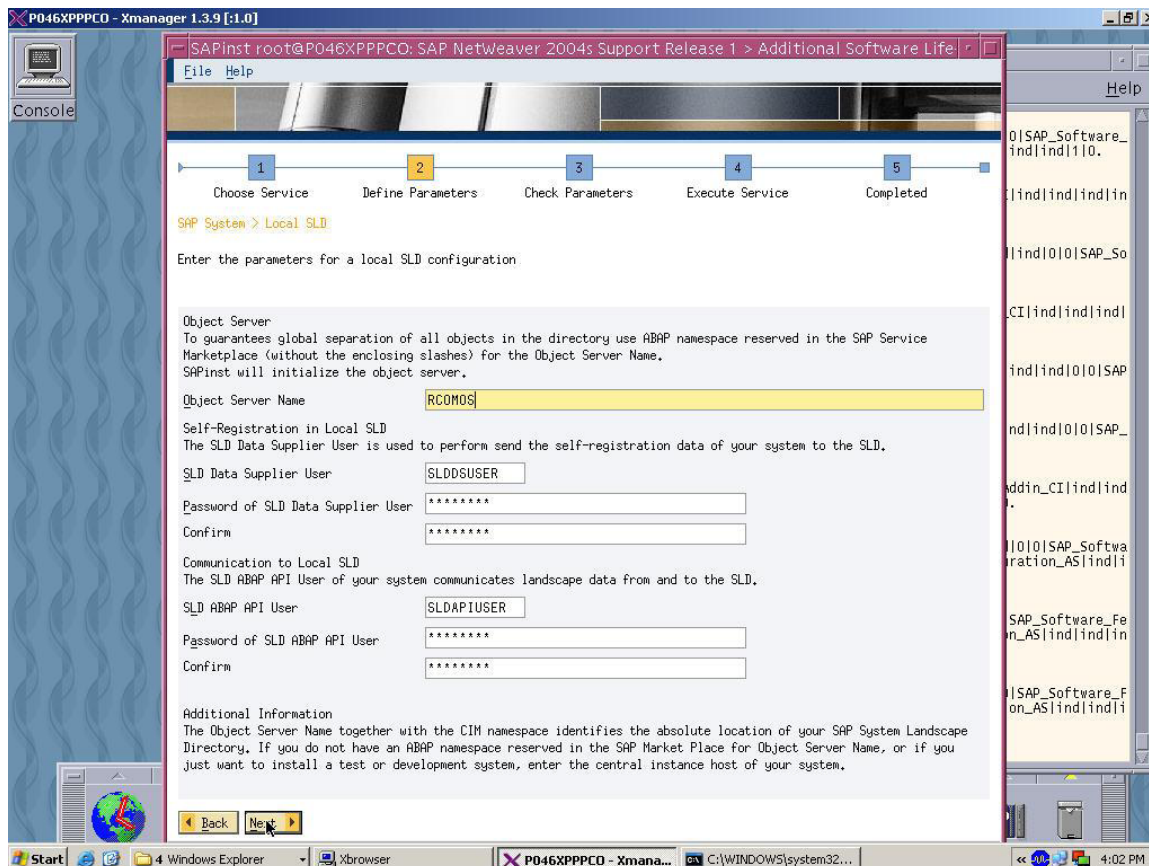
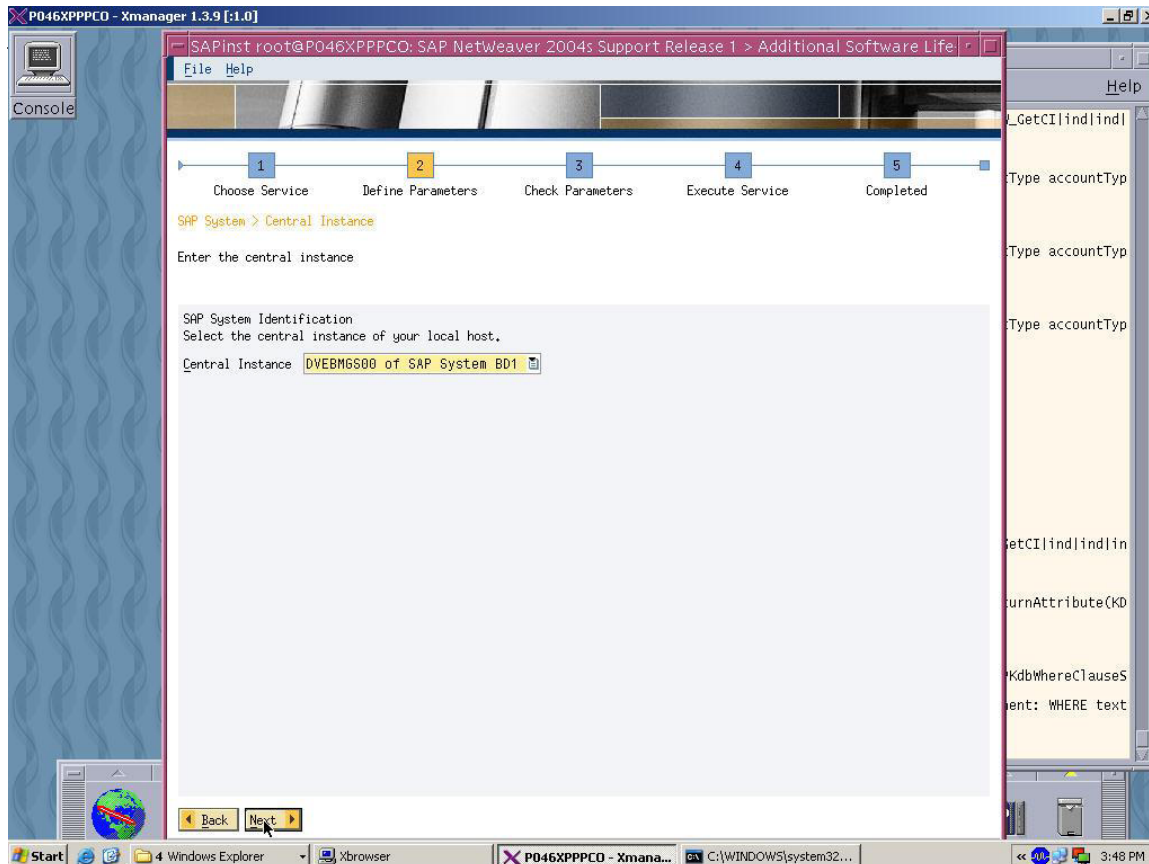
# JAVA ADDIN INSTALLATION



# JAVA ADDIN INSTALLATION



# JAVA ADDIN INSTALLATION





## **JAVA ADDIN INSTALLATION**

---

....END OF DOCUMENT.....