



## SAP System > Software Units

Before selecting the software units/processes, make sure that you have identified the required scenario as described in the Master Guide

### SCM 2005 Software Units

Software units or usage types are installation units that determine the role that a system plays in a given scenario. A usage type can be run together with others in one system or separately in different systems.

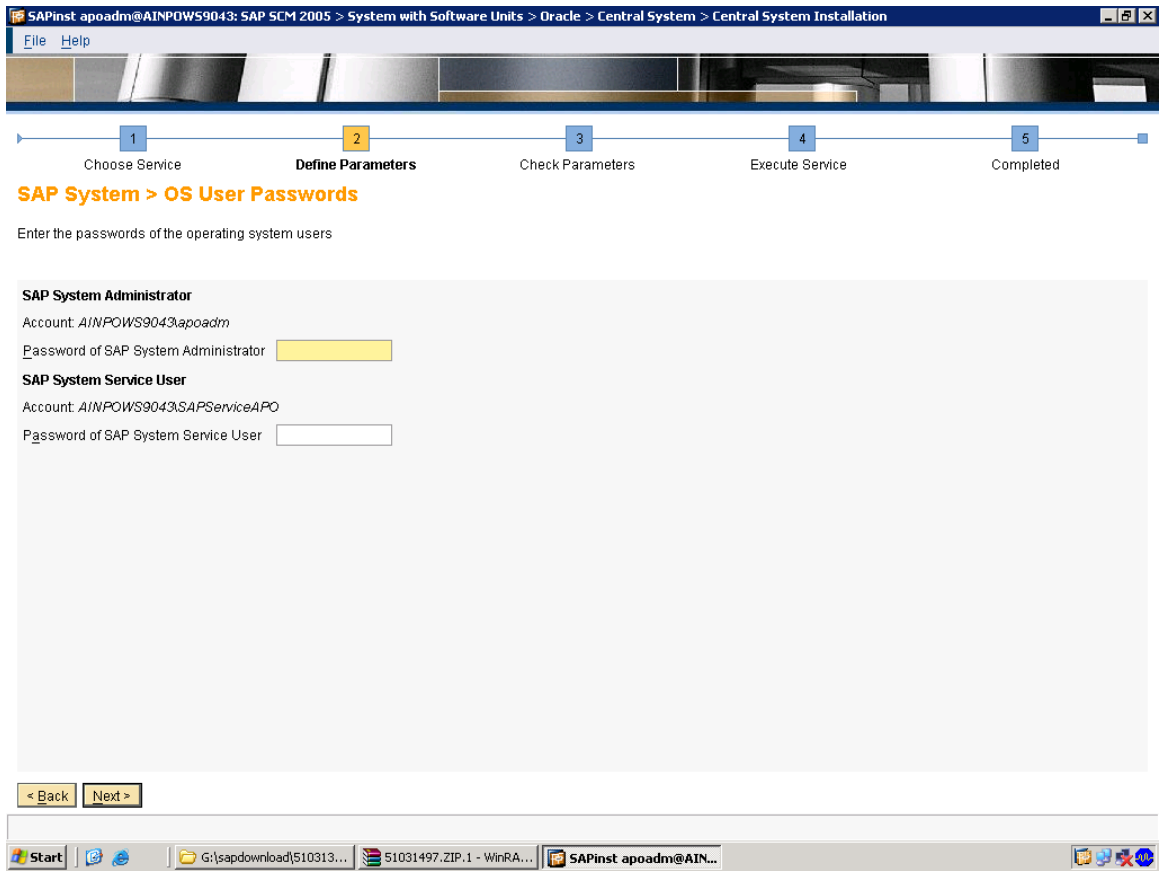
The usage types *AS-ABAP* and *AS-Java* are basis for all other usage types.

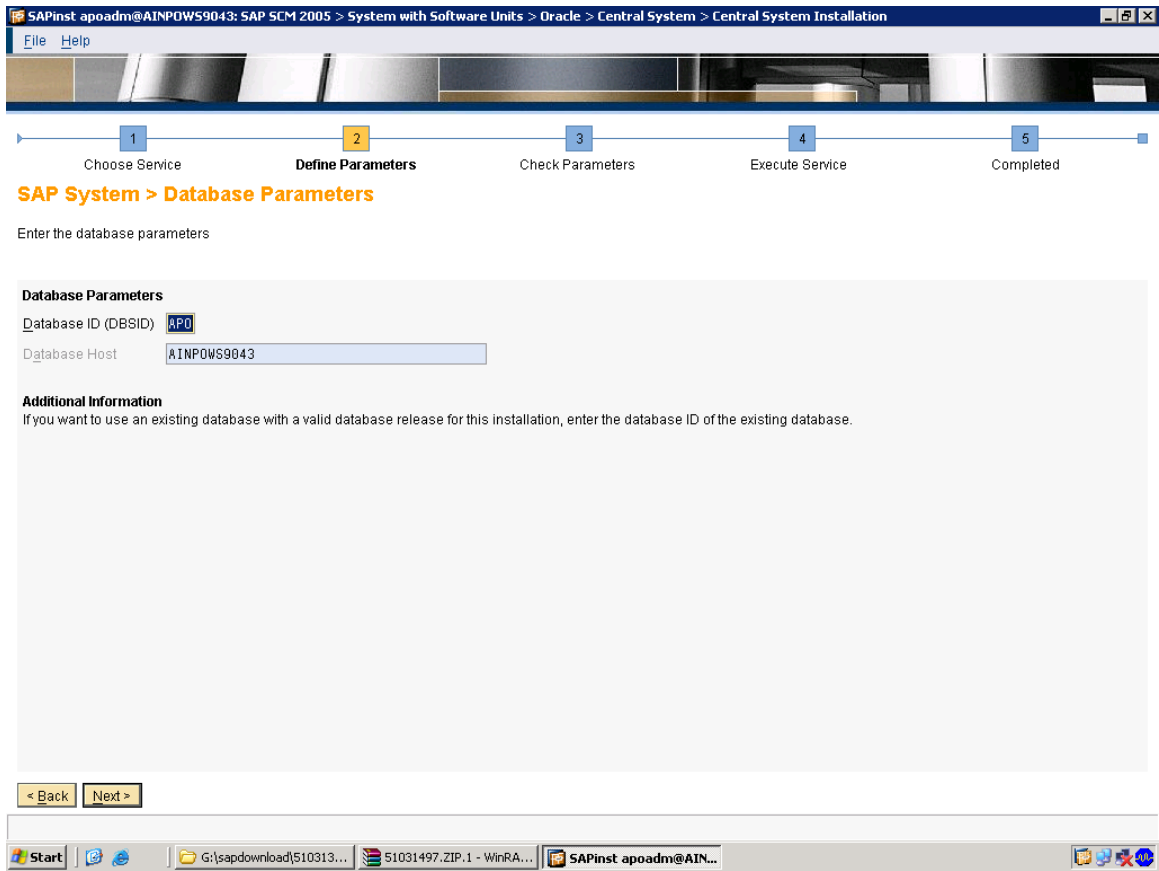
Install	Software Unit	Description	Vendor	Depends On
<input checked="" type="checkbox"/>	SCM-APP	SCM 2005 Application Set	sap.com	AS-ABAP
<input checked="" type="checkbox"/>	SCMSUI	SCM 2005 Store User Interface	sap.com	AS-Java
<input checked="" type="checkbox"/>	SCMWCL	SCM 2005 Web Communication Layer	sap.com	AS-Java

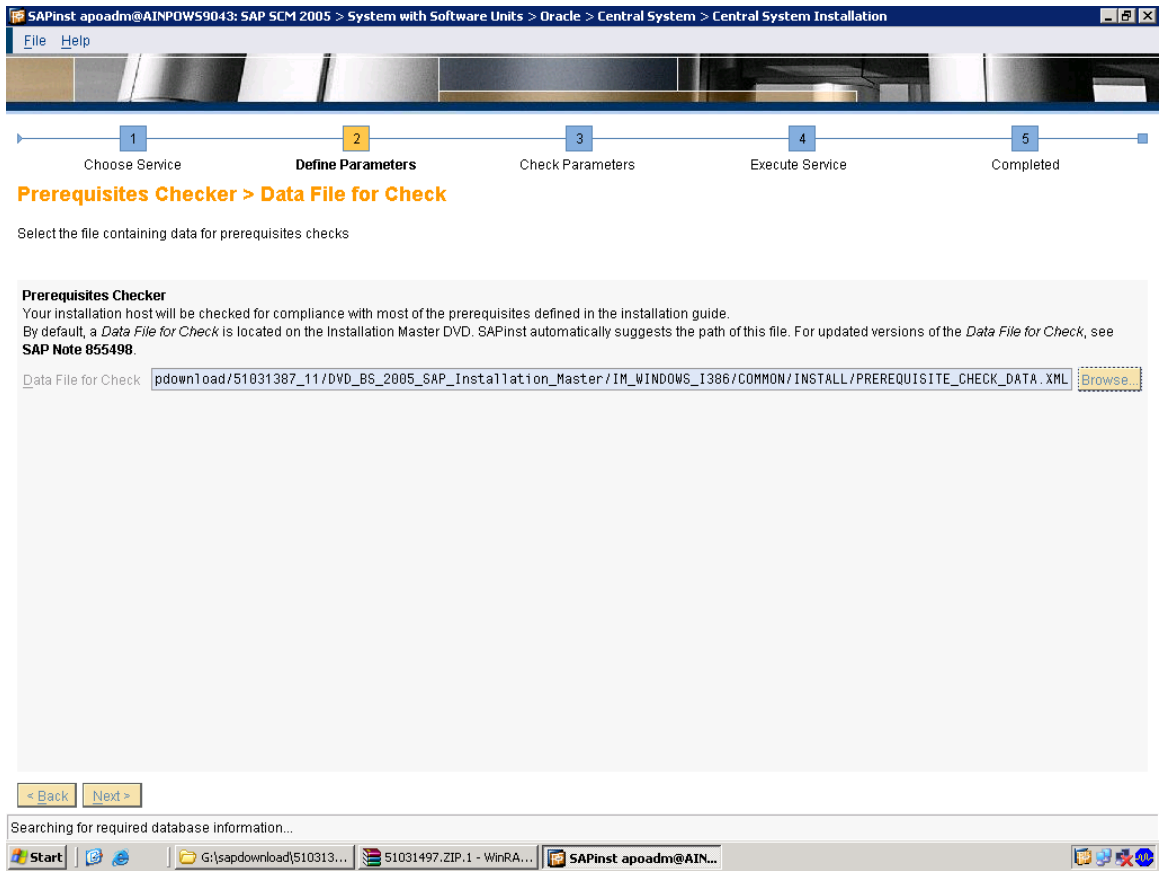
### Additional NetWeaver Software Units

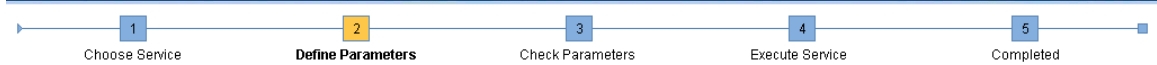
Install	Software Unit	Description	Vendor	Depends On
<input checked="" type="checkbox"/>	AS-ABAP	NetWeaver Applicatio...	sap.com	
<input checked="" type="checkbox"/>	AS-Java	NetWeaver Applicatio...	sap.com	
<input checked="" type="checkbox"/>	BI-Java	NetWeaver BI Java	sap.com	AS-Java, EP
<input type="checkbox"/>	DI	NetWeaver Developmen...	sap.com	AS-Java
<input checked="" type="checkbox"/>	EP	NetWeaver Enterprise...	sap.com	AS-Java
<input type="checkbox"/>	MI	NetWeaver Mobile Inf...	sap.com	AS-ABAP, AS-Java
<input type="checkbox"/>	PI	NetWeaver Process In...	sap.com	AS-ABAP, AS-Java

< Back   Next >









## Prerequisites Checker > Results

Read the results of the prerequisites analysis carefully

Condition	Result Code	Severity	Message	More Information
RAM Size	Condition not met	HIGH	For the selected services at least 1536 MB RAM are required. Current value: 1023 MB. If the current value is much lower than the required value this will significantly slow down the installation or make it even impossible. In this case stop the installation, add more RAM and start it again. (Updated 2005-06-24)	<a href="#">Click here</a>
Host name	OK		The host name has to be an alphanumerical string of characters [A-Z] and [a-z] and digits [0-9], and the hyphen (or minus) character "-". Although the newer RFCs permit host names beginning with digits, we recommend that host names begin with an alpha character. Maximum host name length is 13. Current host name: AINPOWS9043. See also SAP Note 611361. (Updated 2005-06-24)	<a href="#">Click here</a>
Domain Controller	OK		Installations on domain controllers are not supported. (Updated 2005-06-24)	<a href="#">Click here</a>
Names of well known groups	OK		Checking the names of some well known groups. Expected result: "everyone, users, guests, power users". Current result: "everyone, users, guests, power users". If this condition does not hold it is most probably because you are not using an English international version of Windows but a localized one. Only English international versions of Windows are supported. See also SAP Note 362379. (Updated 2005-06-24)	<a href="#">Click here</a>
Operating System Version	OK		The following Windows operating system versions are supported: Windows Server 2003 Standard Edition, Windows Server 2003 Enterprise Edition, Windows Server 2003 Datacenter Edition (i. e. Version 5.2, product type Server). Current Windows version: Version 5.2, Service Pack 0.0, product type: Server. You can check the current version of your operating system by running winver using Start --> Run .... See also <a href="http://service.sap.com/platforms">http://service.sap.com/platforms</a> --> Product Availability Matrix. (Updated 2005-06-24)	<a href="#">Click here</a>
Swap Size	OK		For the selected services at least 4093 MB swap space are recommended. Current value: 4516 MB. (Updated 2005-06-24)	<a href="#">Click here</a>

< Back Next >

SAPInst: apoadm@AINPOWS9043: SAP SCM 2005 > System with Software Units > Oracle > Central System > Central System Installation

File Help

1

Choose Service

2

Define Parameters

3

Check Parameters

4

Execute Service

5

Completed

Oracle > Database System

Enter the parameters of the database system

Database Instance Parameters

DB Homee:\oracle\j2E\1011

DB Server Version101

Instance Memory Management

Instance RAM (MB)512

Total RAM (MB)1023

Database Schema Parameters

The new default for ABAP Schema is SAPSR3 and the new default for Java Schema is SAPSR3DB.

ABAP SchemaSAPSR3

Password of ABAP Schema

Confirm

Java SchemaSAPSR3DB

Password of Java Schema

Confirm

< Back

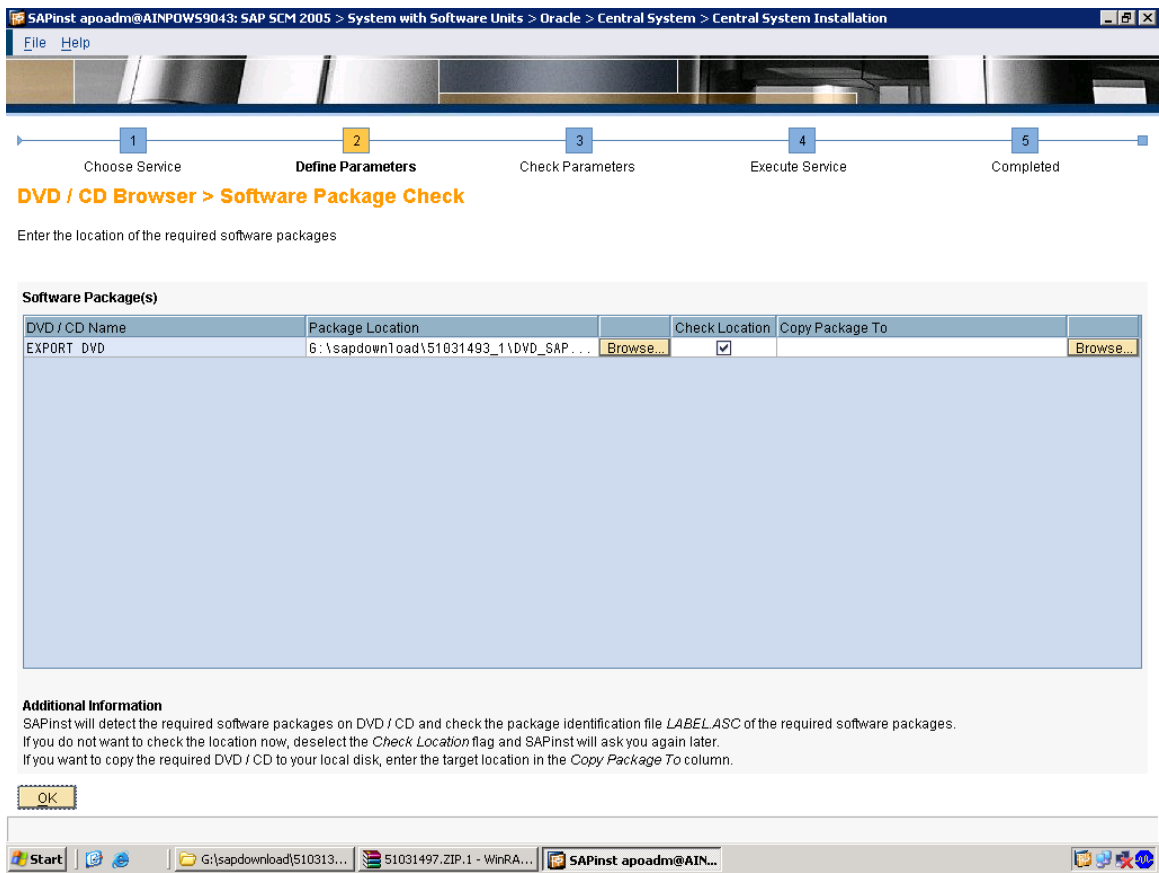
Next >

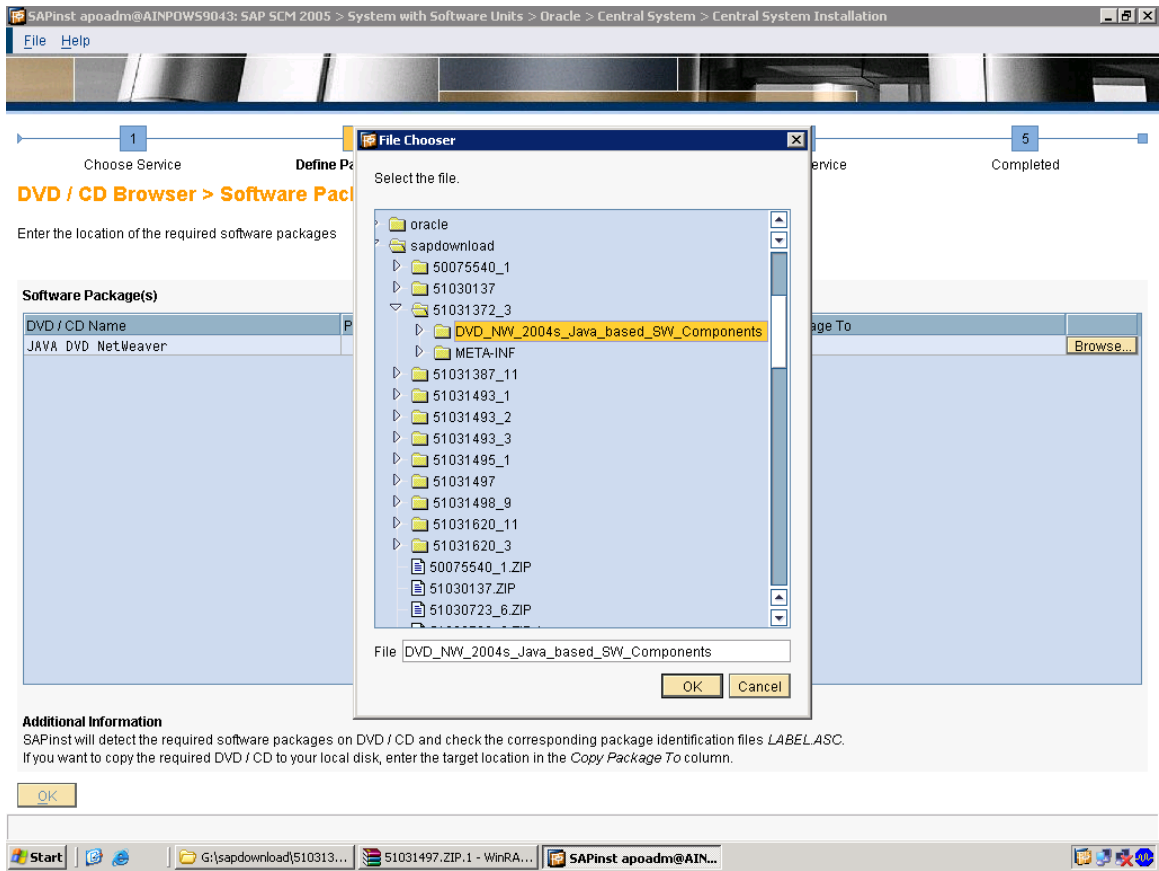
Start

G:\sapdownload\510313...

51031497.ZIP.1 - WinRA...

SAPInst apoadm@AIN...









## Oracle > Database System

Enter the parameters of the database system

### Database Server Drives

Local Drives	Free Space [MB]
E:	80800
F:	76100
G:	32700
C:	7700

### Distribution of Database Directories

Sapdata Drive	Sapdata Directory	Required Disk Space [MB]
E:	\oracle\AP0\sapdata1	12522
E:	\oracle\AP0\sapdata2	9900
E:	\oracle\AP0\sapdata3	7700
E:	\oracle\AP0\sapdata4	7700

Redo Log Archives (origlog/AB) G:

Oracle Archives (oraarch) F:

Redo Log Archives (mirrlog/AB) C:

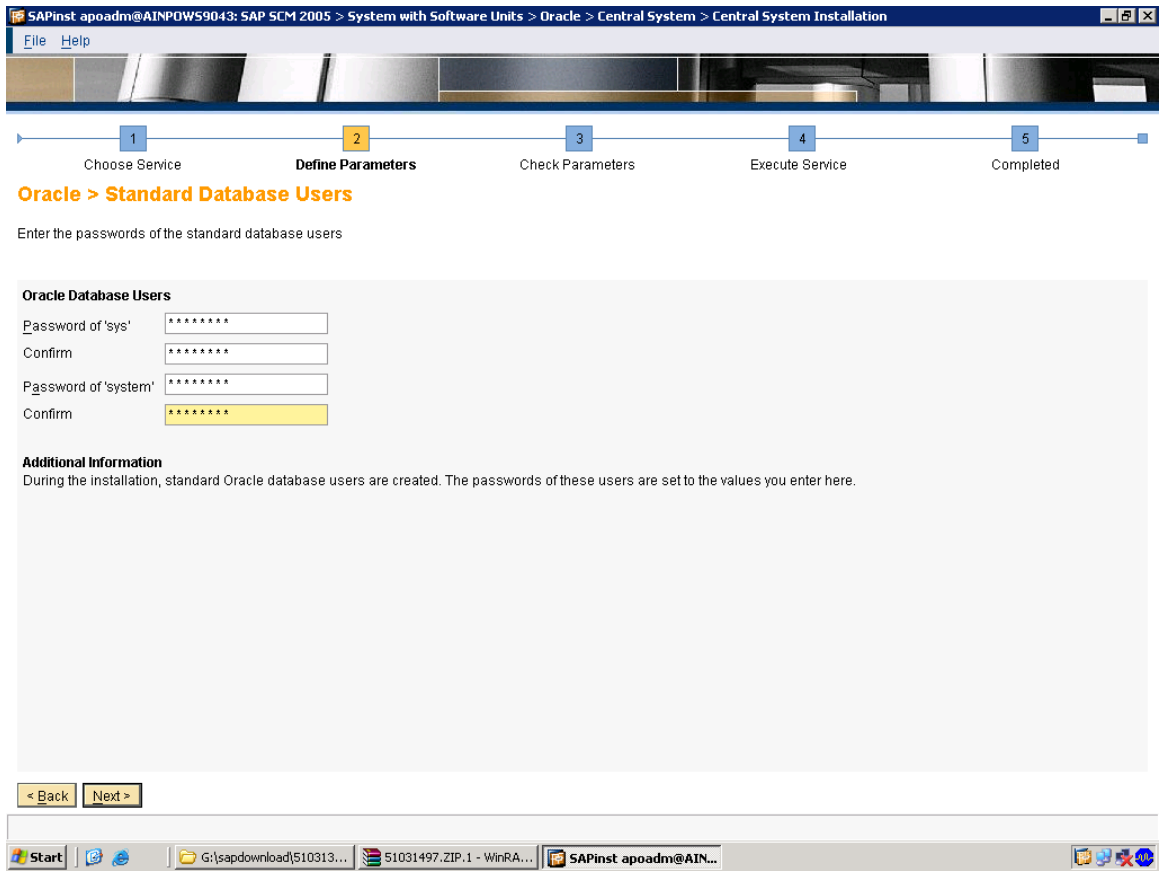
### Database Advanced Options

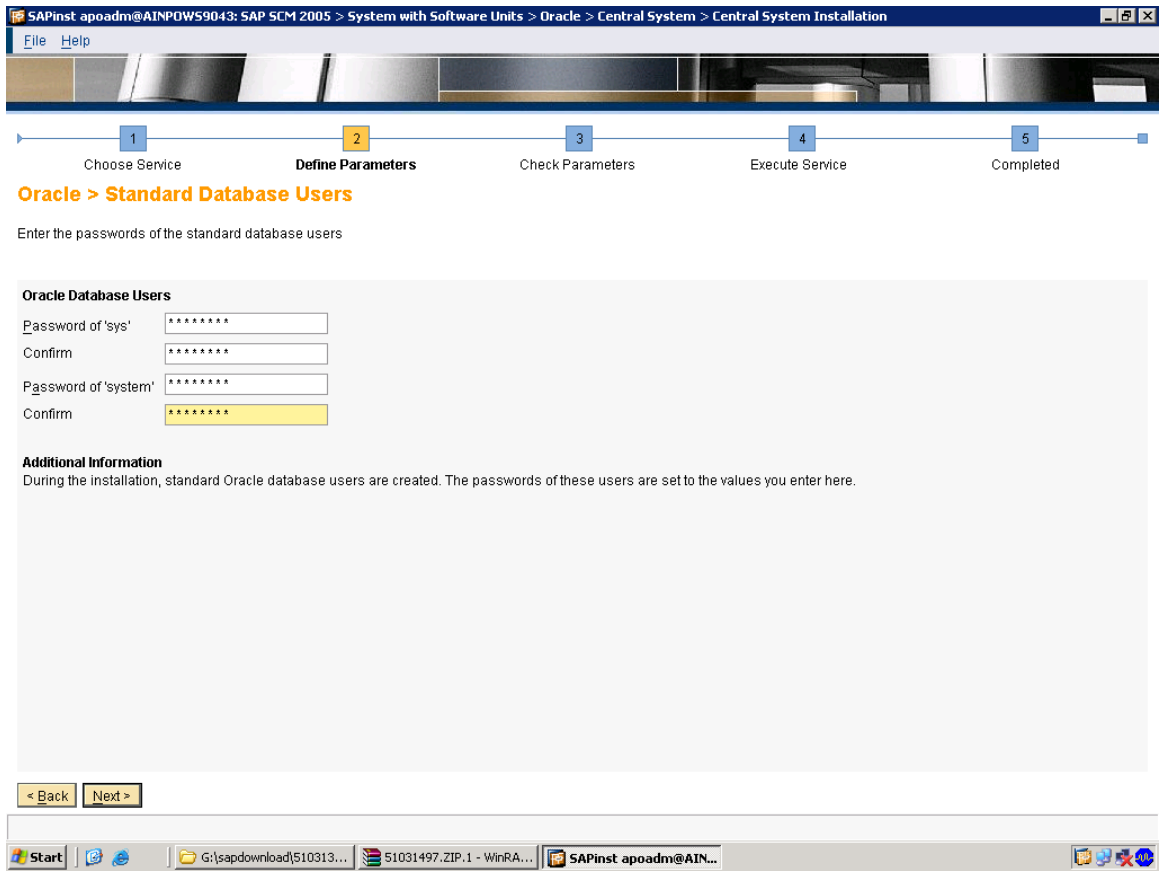
DB Advanced Configuration ☐

### Additional Information

In the *DB Advanced Configuration* section, you can change parameters for: create database, create tablespaces, file system distribution and storage. This section is for oracle experts only.

< Back    Next >









1 Choose Service 2 **Define Parameters** 3 Check Parameters 4 Execute Service 5 Completed

## DVD / CD Browser > Software Package Check

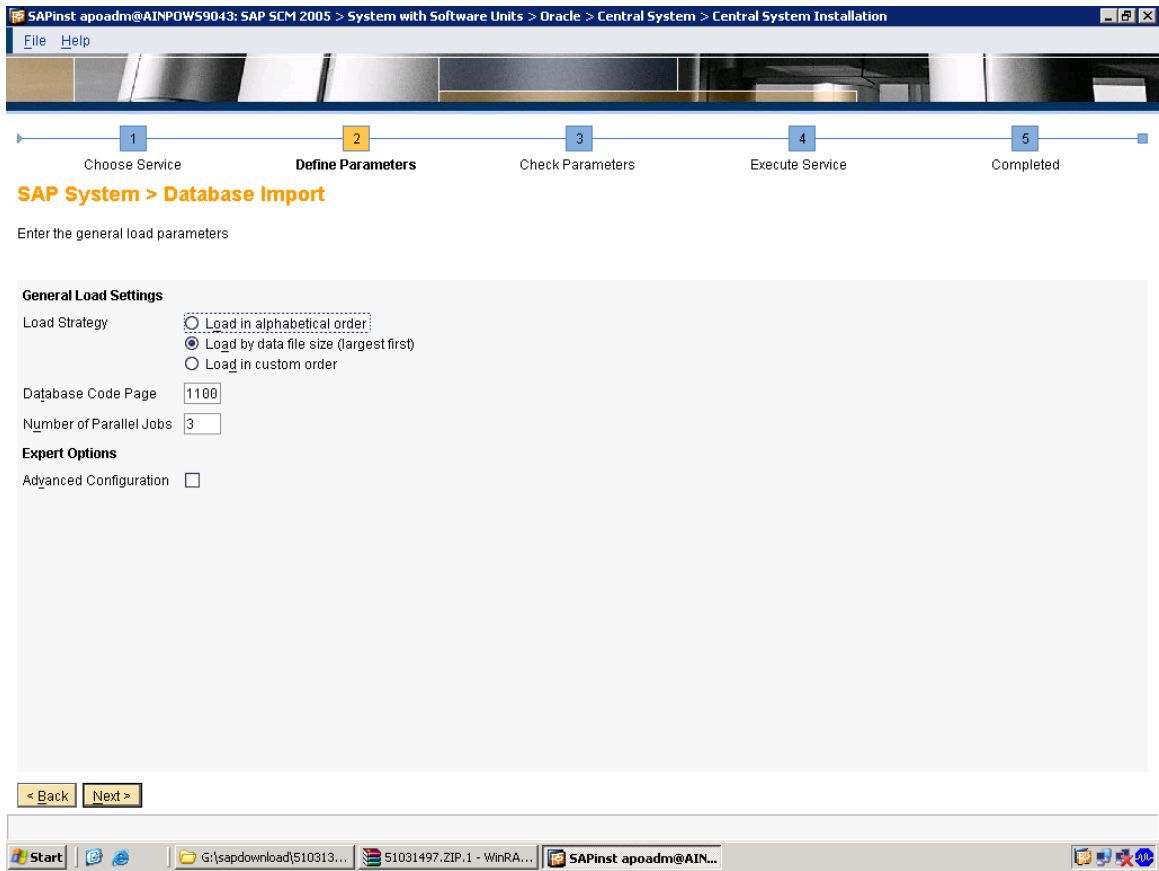
Enter the location of the required software packages

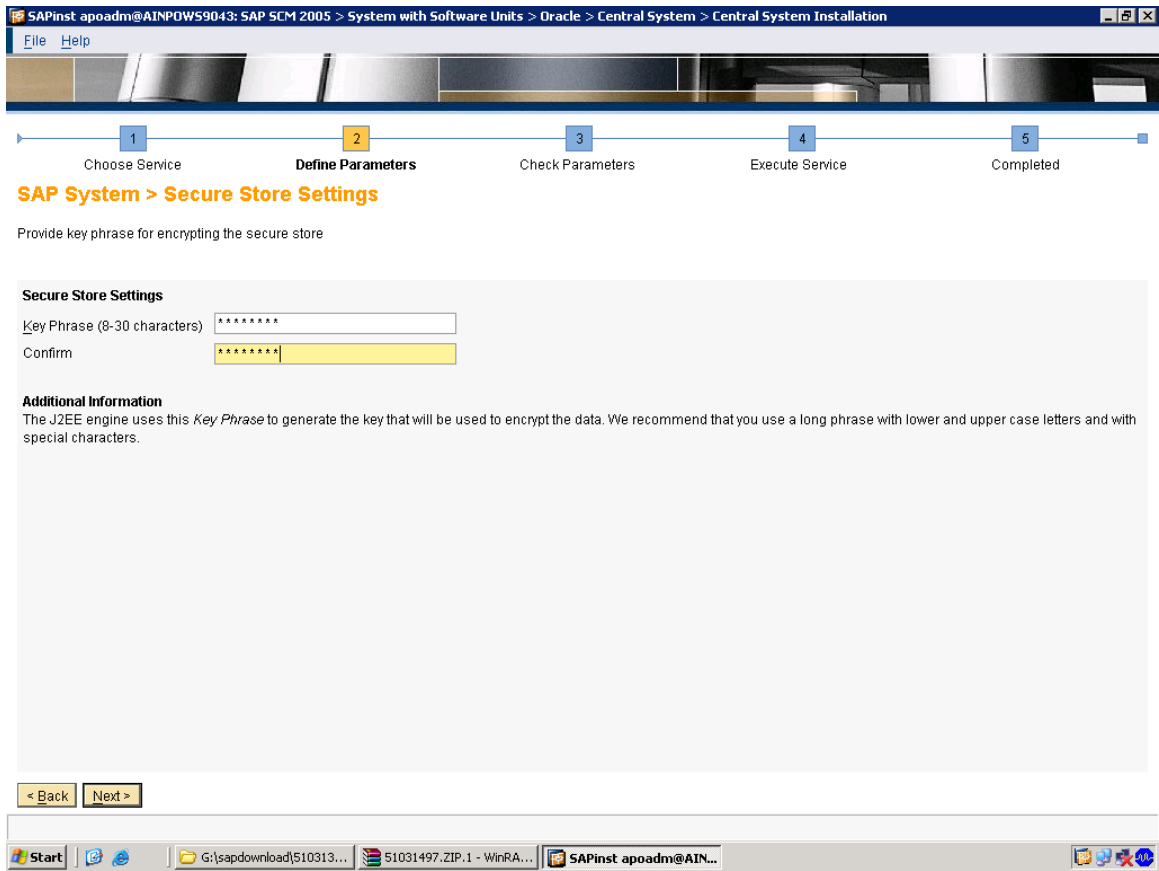
Software Package(s)				
DVD / CD Name	Package Location	Check Location	Copy Package To	
EXPORT DVD	G:\sapdownload\51031493_31DVD_SAP...	Browse...	<input checked="" type="checkbox"/>	Browse...

### Additional Information

SAPInst will detect the required software packages on DVD / CD and check the package identification file *LABEL.ASC* of the required software packages.  
If you do not want to check the location now, deselect the *Check Location* flag and SAPInst will ask you again later.  
If you want to copy the required DVD / CD to your local disk, enter the target location in the *Copy Package To* column.

OK







1 Choose Service 2 **Define Parameters** 3 Check Parameters 4 Execute Service 5 Completed

## ABAP System > Create Database Statistics

Specify whether you want the statistics to be created automatically after the import ends

### At Import End

Database Statistics ☒ Create statistics at import end  
☐ Skip statistics creation

Program Call `brconnect.exe -u / -c -f stats -o summary -o SAPSR3 -p 4`

### Additional Information

If you skip the database statistics creation your database may run with lower performance.

< Back Next >





1 Choose Service 2 **Define Parameters** 3 Check Parameters 4 Execute Service 5 Completed

## SAP System > SCS Instance

Enter the parameters for the SAP Central Services (SCS) instance

### Detected SAP System Instances

SAPInst found the following SAP system instances on this host:

SAP System ID	Instance Number	Instance Name

### SCS Instance Parameters

SCS Instance Number

Internal SCS Messaging Service Port (leave empty for default)

### Additional Information

The SCS instance requires an *Instance Number* as a technical identifier for internal processes. This number must be unique for this installation host. The instance-specific *Internal Messaging Service Port* is required as a unique internal communication channel.

< Back Next >



## SAP System > Central Instance

Enter the central instance parameters

### Detected SAP System Instances

SAPinst found the following SAP system instances on this host:

SAP System ID (SAPSID)	Instance Number	Instance Name
AP0	00	SCS00

### Central Instance Parameters

C\ Instance Number   
C\ Messaging Service Port (leave empty for default)   
Internal CI Messaging Service Port (leave empty for default)   
SAP Solution Manager Key

### Additional Information

The *Instance Number* for the central instance serves as a technical identifier for controlling internal processes (such as assigned memory). This number must be unique for this installation host. The instance-specific *Internal Messaging Service Port* for internal communication and the *Messaging Service Port* are required as a unique communication channel. The *SAP Solution Manager Key* is required for the installation or upgrade. Further information can be found in the installation guide, the SAP Service Marketplace and SAP note 805390.

< Back    Next >

SAPInst: apoadm@AINPOWS9043: SAP SCM 2005 > System with Software Units > Oracle > Central System > Central System Installation

File Help

1

Choose Service

2

Define Parameters

3

Check Parameters

4

Execute Service

5

Completed

SAP System > ABAP UME

Enter the J2EE engine user passwords

J2EE Engine Connection

Password of J2EE\_ADMIN

\*\*\*\*\*

Confirm

\*\*\*\*\*

Password of SAPJ2SF

\*\*\*\*\*

Confirm

\*\*\*\*\*

Password of SDM

\*\*\*\*\*

Confirm

\*\*\*\*\*

Additional Information

Further information about ABAP User Management Engine (ABAP UME): <http://help.sap.com> or SAP Note 718383.  
The communication user *SAPJ2SF* is used for RFC between the Java stack and the ABAP stack. The ABAP users *J2EE\_ADMIN* and *J2EE\_GUEST* represent the default administrative and anonymous users for the J2EE engine. The *J2EE\_ADMIN* account has full control of the J2EE engine. After you have entered the passwords, SAPInst creates these accounts.

< Back

Next >

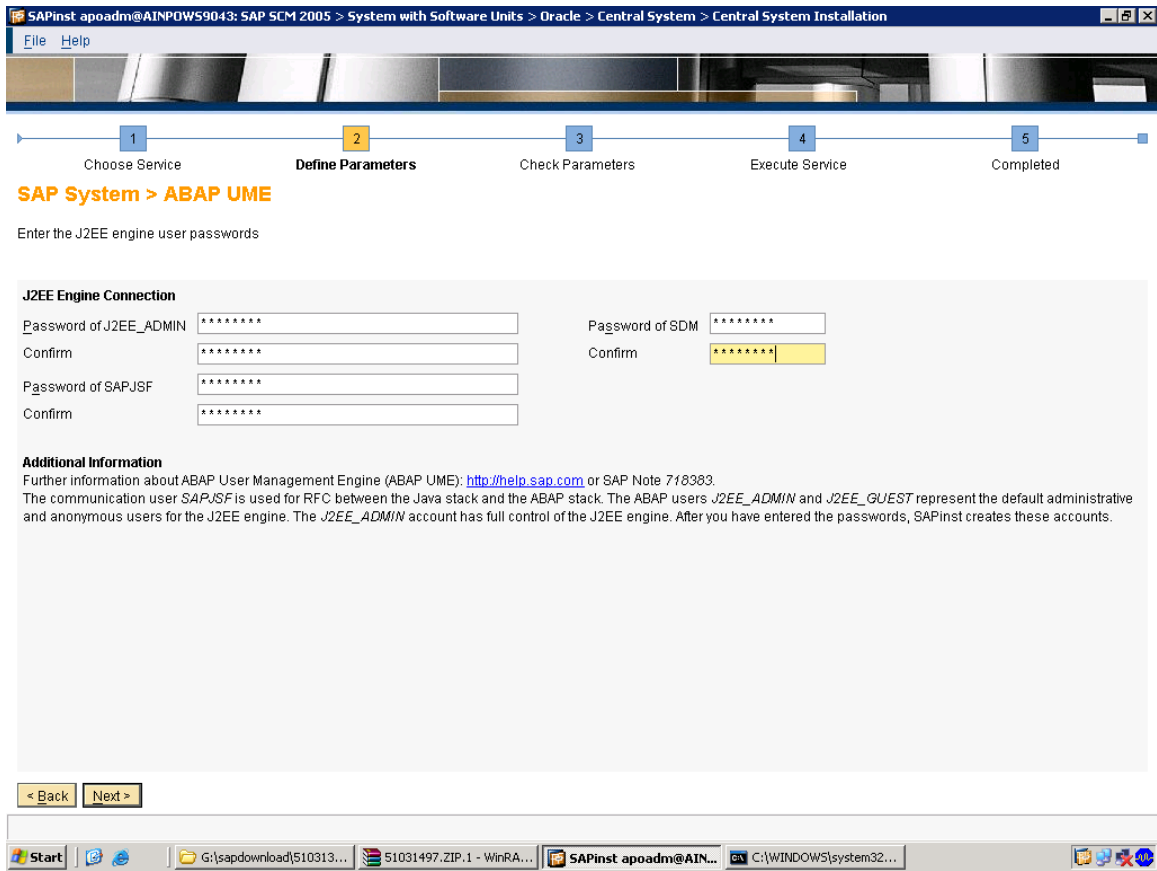
Start

G:\sapdownload\S10313...

S1031497.ZIP.1 - WinRA...

SAPInst apoadm@AIN...

C:\WINDOWS\system32...





1 Choose Service 2 **Define Parameters** 3 Check Parameters 4 Execute Service 5 Completed

## DVD / CD Browser > Software Package Request

Enter the location of the required software packages

Software Package(s)			
DVD / CD Name	Package Location		Copy Package To
KERNEL DVD	G:\sapdownload\51031620_11\DVD_NW_2004...	Browse...	Browse...

### Additional Information

SAPInst will detect the required software packages on DVD / CD and check the corresponding package identification files *LABEL.ASC*. If you want to copy the required DVD / CD to your local disk, enter the target location in the *Copy Package To* column.

OK



1 Choose Service 2 **Define Parameters** 3 Check Parameters 4 Execute Service 5 Completed

## DVD / CD Browser > Software Package Check

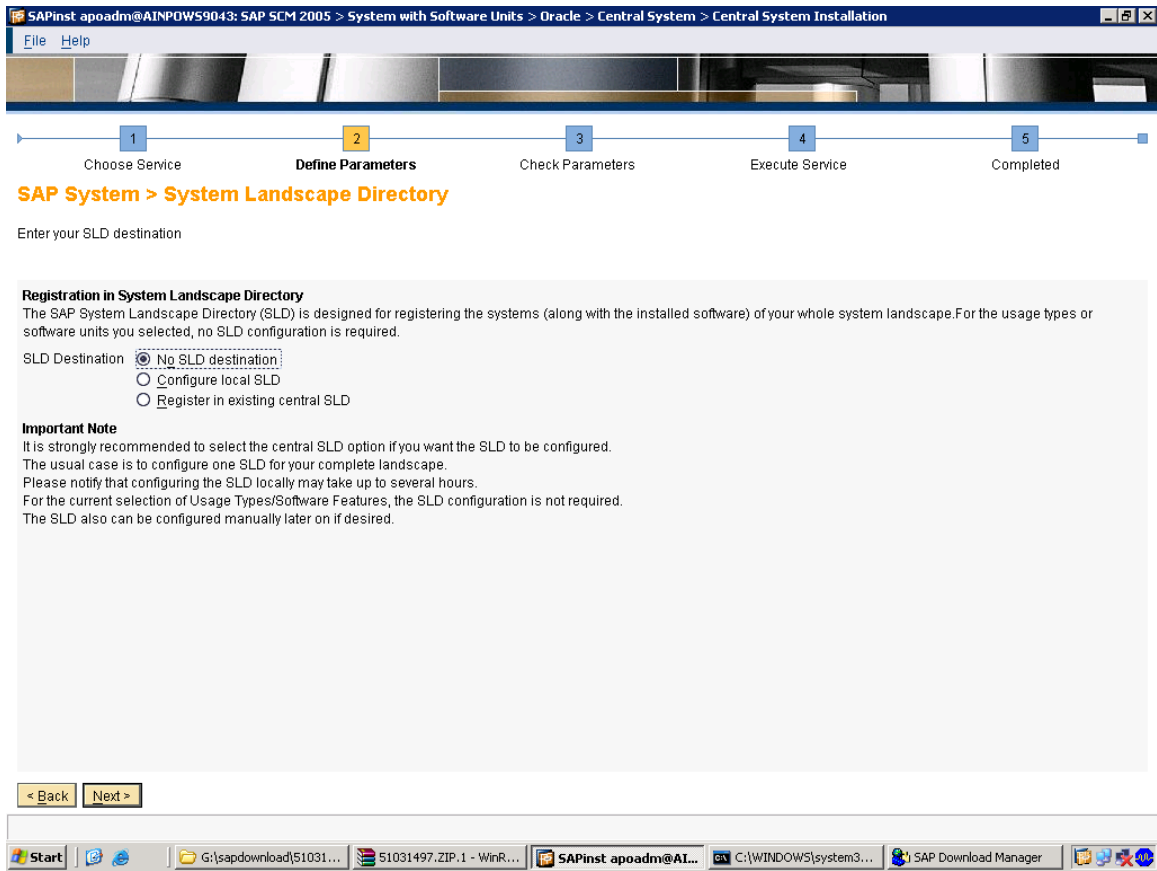
Enter the location of the required software packages

**Software Package(s)**

DVD / CD Name	Package Location	Check Location	Copy Package To
JAVA DVD Business Suite	G:\sapdownload\51031497\LABEL.ASC	<input checked="" type="checkbox"/> Browse...	Browse...

**Additional Information**  
 SAPInst will detect the required software packages on DVD / CD and check the package identification file *LABEL.ASC* of the required software packages.  
 If you do not want to check the location now, deselect the *Check Location* flag and SAPInst will ask you again later.  
 If you want to copy the required DVD / CD to your local disk, enter the target location in the *Copy Package To* column.

OK





## SAP System > ADS Users

Enter the password for the ADS users

**ADS Administrator**

Password of 'ADSUSER'

Confirm

**ADS Communication User**

Password of 'ADS\_AGENT'

Confirm

**Additional Information**

The ADS administrator user and the ADS communication user *ADS\_AGENT* will be created in your J2EE Engine with the given passwords.

< Back Next >





1 Choose Service 2 Define Parameters 3 Check Parameters 4 Execute Service 5 Completed

## Parameter Summary

Make a final review of the parameters before the service is executed

Parameter List

☐ **SAP System > Software Units**

Table

Install	Software Unit	Description	Vendor	Depends On
<input checked="" type="checkbox"/>	AS-ABAP	NetWeaver Application Serv...	sap.com	
<input checked="" type="checkbox"/>	AS-Java	NetWeaver Application Serv...	sap.com	
<input checked="" type="checkbox"/>	BI-Java	NetWeaver BI Java	sap.com	AS-Java, EP

☐ **DVD / CD Browser > Software Package Request**

Table

DVD / CD Name	Package Location	Copy Package To
JAVA DVD NetWeaver	G:\nw2004s\2\j2eeosind\DVD_NW_2004s_Ja...	
JAVA DVD NetWeaver	G:\sapdownload\51031372_3\DVD_NW_2004s...	
KERNEL DVD	G:\nw2004s\2\kerne17\DVD_NW_2004s_Kern...	

☐ **SAP System > Java Development Kit**

JDK Directory

C:\j2sdk1.4.2\_08

☐ **SAP System > General Parameters**

SAP System ID (SAPSID)

AP0

Unicode System (recommended)

Start



1 Choose Service 2 Define Parameters 3 Check Parameters 4 **Execute Service** 5 Completed

## SAP System > Change User Password

Enter a new password for the DDIC user

### Important Information

SAP systems are delivered with several default accounts that are protected with commonly known passwords. User *DDIC* has superuser user access rights. We strongly recommend that you change the default password.

A *SAP System Client* is a self-contained unit in an SAP system with separate master records and its own set of tables. ABAP user data have to be maintained *SAP System Client*-specific.

### ABAP User

Account: *DDIC*

SAP System Client

000

New Password of 'DDIC'

\*\*\*\*\*

Confirm

\*\*\*\*\*

Continue

Checking input values...



## SAP System > Change User Password

Enter a new password for the DDIC user

### Important Information

SAP systems are delivered with several default accounts that are protected with commonly known passwords. User *DDIC* has superuser user access rights. We strongly recommend that you change the default password.

A *SAP System Client* is a self-contained unit in an SAP system with separate master records and its own set of tables. ABAP user data have to be maintained *SAP System Client*-specific.

### ABAP User

Account: *DDIC*

SAP System Client

001

New Password of 'DDIC'

\*\*\*\*\*

Confirm

\*\*\*\*\*

Continue



## SAP System > Change User Password

Enter a new password for the SAP\* user

### Important Information

SAP systems are delivered with several default accounts that are protected with commonly known passwords. User *SAP\** has superuser access rights. We strongly recommend that you change the default password.

A *SAP System Client* is a self-contained unit in an SAP system with separate master records and its own set of tables. ABAP user data have to be maintained *SAP System Client*-specific.

### ABAP User

Account: *SAP\**

SAP System Client

New Password of 'SAP\*'

Confirm

Continue




## Task Progress

The task is running

Phase 30 of 45

Phase List

- ✓ Create Oracle database
- ✓ Create or check Oracle tablespaces
- ✓ Check Oracle NLS\_CHARACTERSET
- ✓ Create Oracle database schema
- ✓ Check Oracle patch
- ✓ Install Oracle DBA tools
- ✓ Import ABAP
- ✓ Create secure store
- ✓ Import Java dump
- ✓ Post load activities
- ✓ Post load activities
- ✓ Install SCS instance
- ✓ Install central instance
- ✓ Start instance
- ✓ ABAP post installation activities
- ✓ Check DDIC password
- ✓ Run ABAP Reports
- Change default passwords



The phase is in progress.



1 Choose Service 2 Define Parameters 3 Check Parameters 4 **Execute Service** 5 Completed

## SAP System > Change User Password

Enter a new password for the SAP\* user

### Important Information

SAP systems are delivered with several default accounts that are protected with commonly known passwords. User *SAP\** has superuser access rights. We strongly recommend that you change the default password.  
A *SAP System Client* is a self-contained unit in an SAP system with separate master records and its own set of tables. ABAP user data have to be maintained *SAP System Client*-specific.

### ABAP User

Account: *SAP\**

SAP System Client

New Password of 'SAP\*'

Confirm

**Continue**



## Task Progress

The Task has been completed successfully

All phases completed

Phase List

- ✓ Check DDIC password
- ✓ Run ABAP Reports
- ✓ Change default passwords
- ✓ Create Java users
- ✓ Install Java engine
- ✓ Configure UME
- ✓ Start Java engine
- ✓ LiveCache integration
- ✓ Prepare software units enablement
- ✓ Fill CTC template for AS-Java
- ✓ Configure SLD
- ✓ Install software units
- ✓ Configure software units
- ✓ Configure usage type AS-Java
- ✓ Configure CAF
- ✓ Configure ADS
- ✓ Configure usage type EP
- ✓ Setup minimal template for AS-Java

Execution of Service SAP SCM 2005 > System with Software Units > Oracle > Central System > Central System Installation has been completed successfully

OK

Execution of Service has been completed successfully

Credits to the Original Uploader in AF and thanks to the person involved in making this wonderful documentation with screenshots.

*Converted to PDF by Jimstex for [SAP Database – Unofficial SAP Knowledge Base](#)*