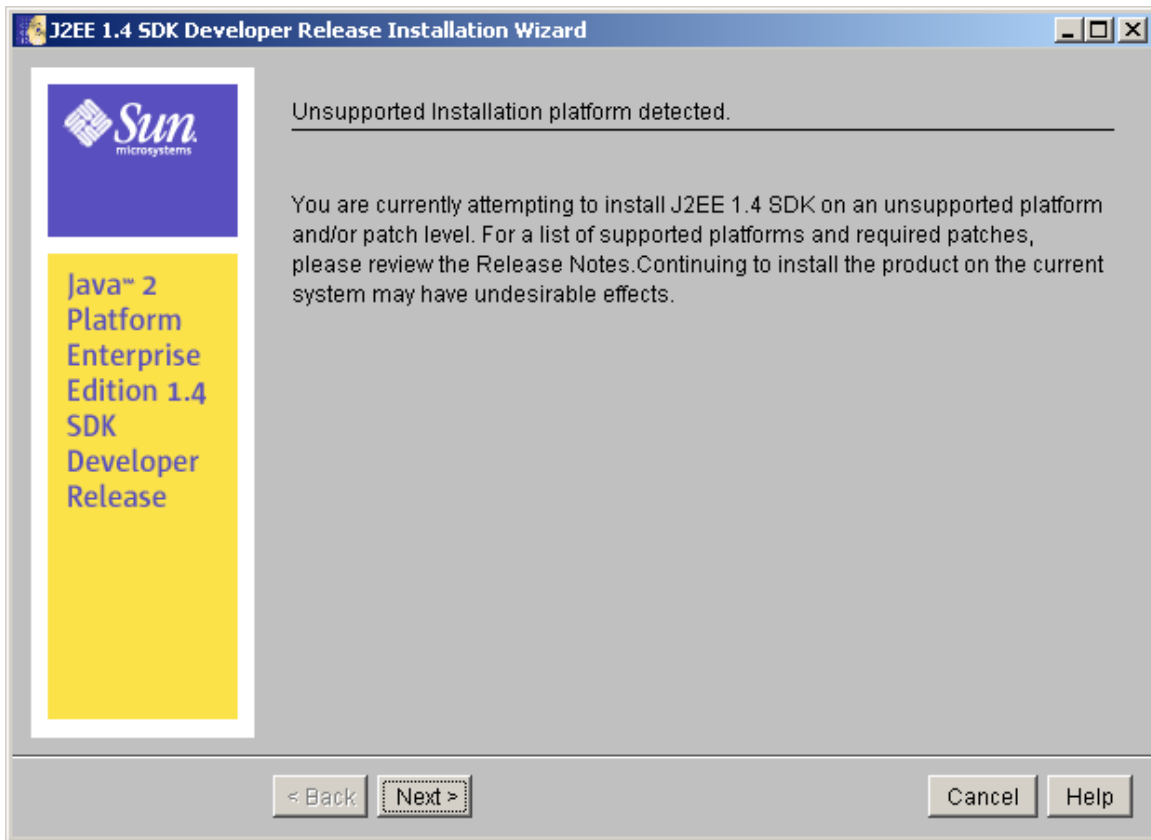
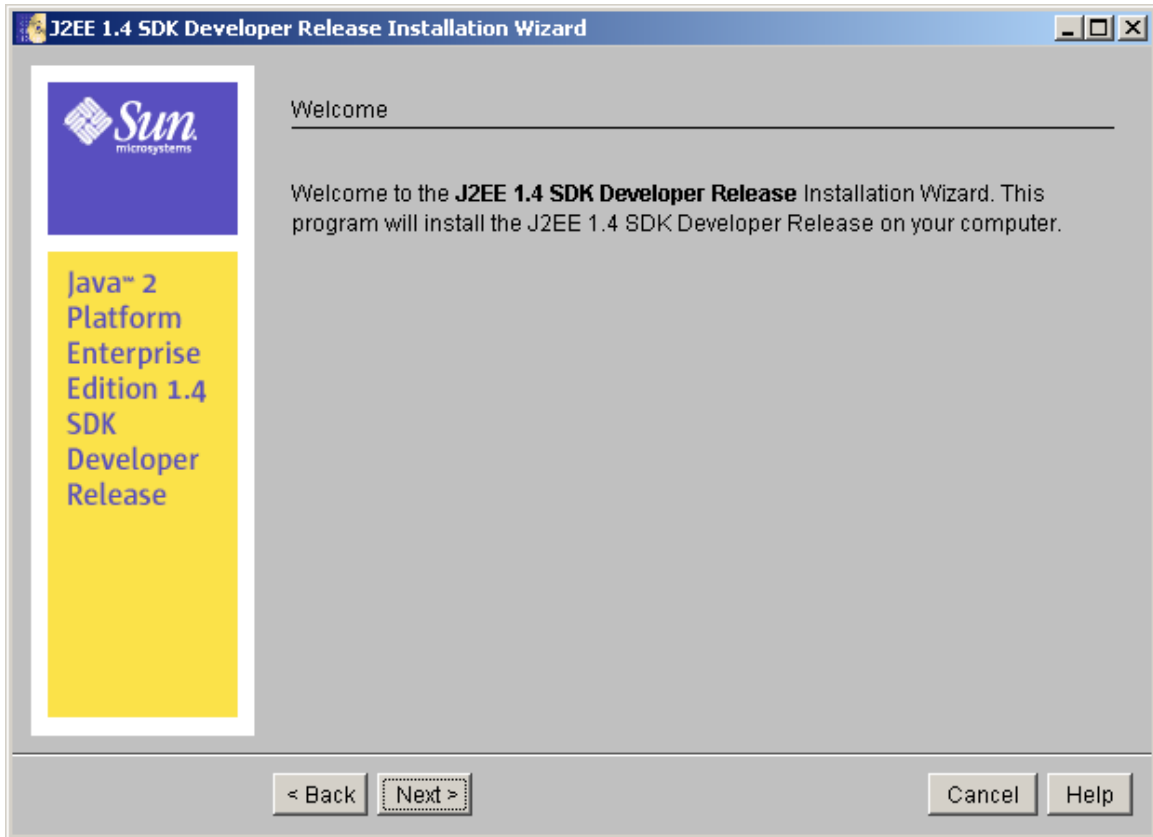


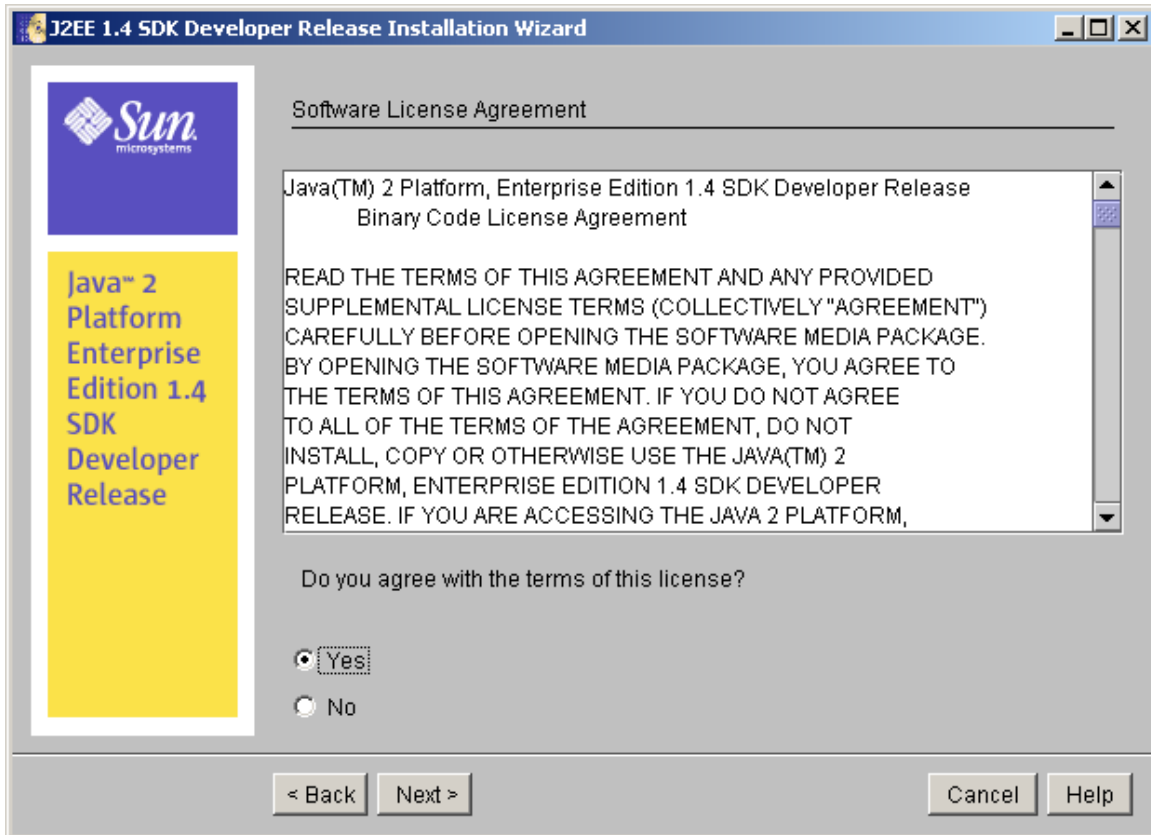
## Installation of MySapERP 2005.

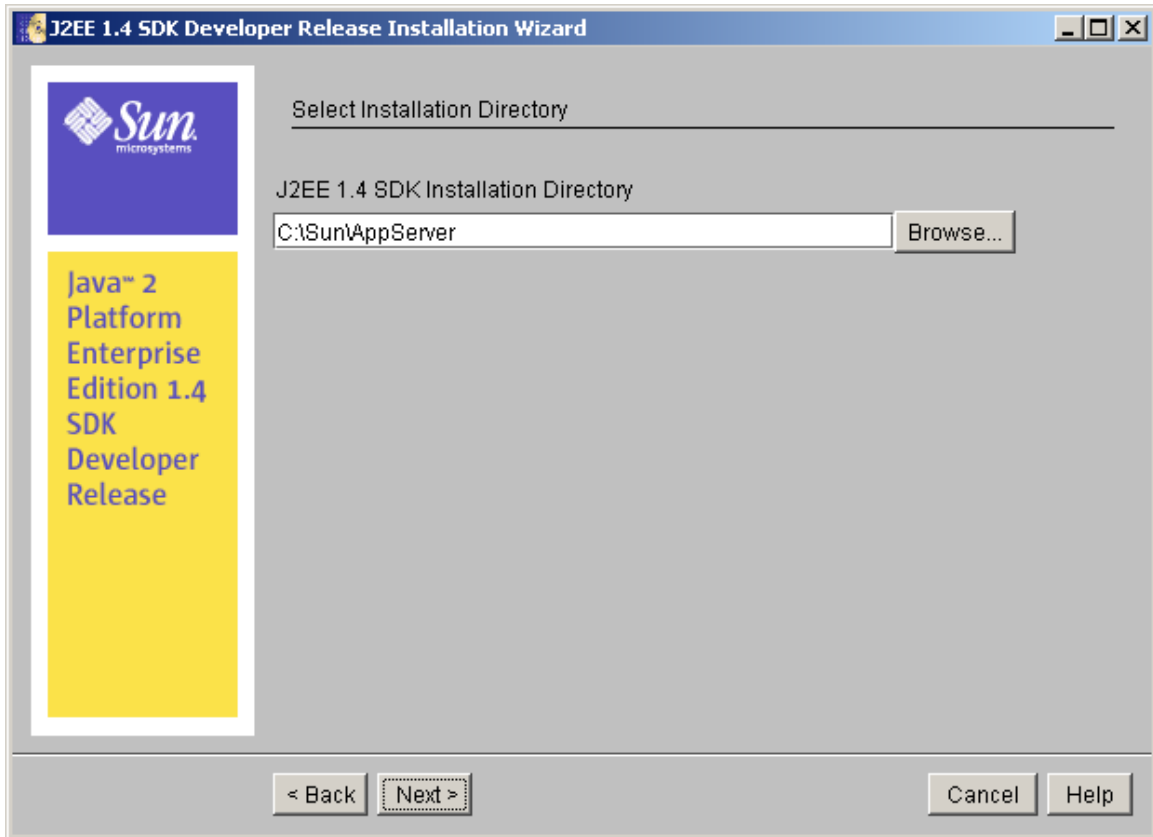
- a. Create user ECCadm & SapServiceECC , add them in admin group.
- b. Install JDK 1.4.1\_0x


Extracting Java(TM) 2 Runtime Environment files...











java™ 2  
Platform  
Enterprise  
Edition 1.4  
SDK  
Developer  
Release

### Admin Configuration

Admin User Name:

Password (min 8 chars.):

Re-enter Password:

☒ Don't Prompt for Admin User Name

*The admin username and password will be stored in a user preference file and will not have to be provided when performing admin functions.*

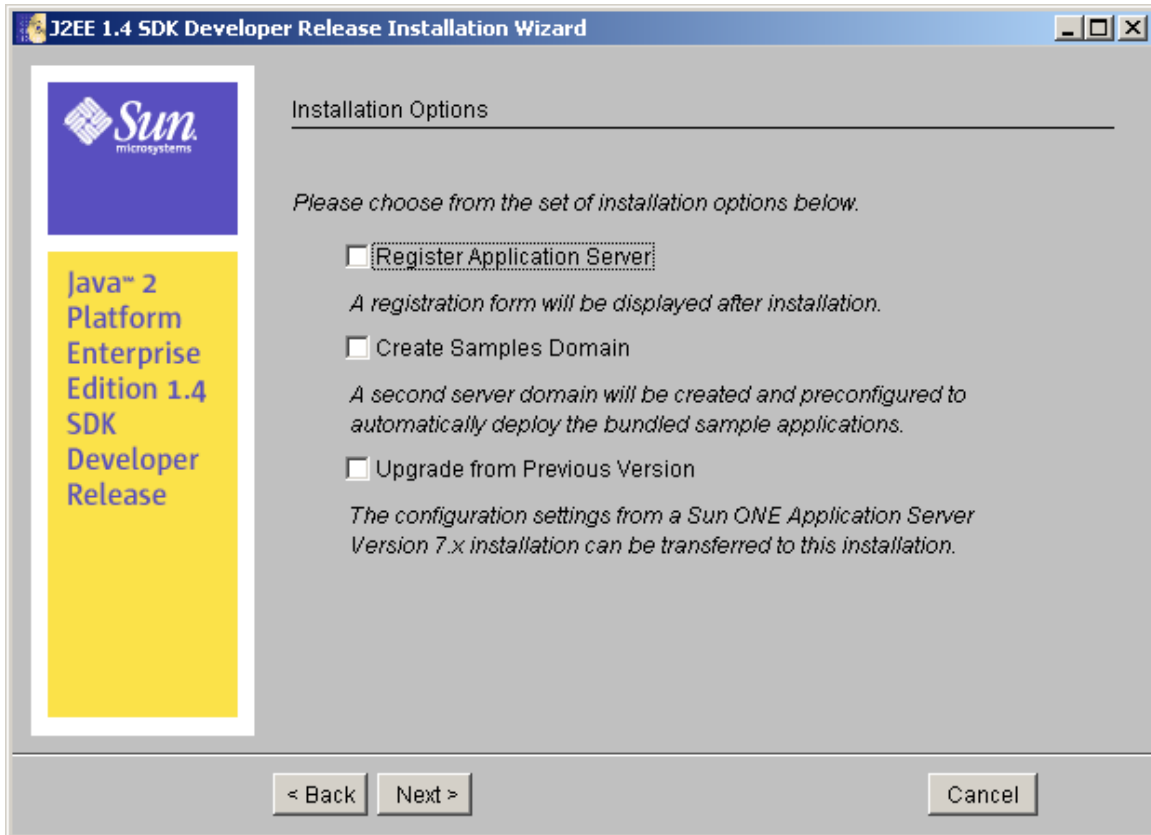
☐ Prompt for Admin User Name

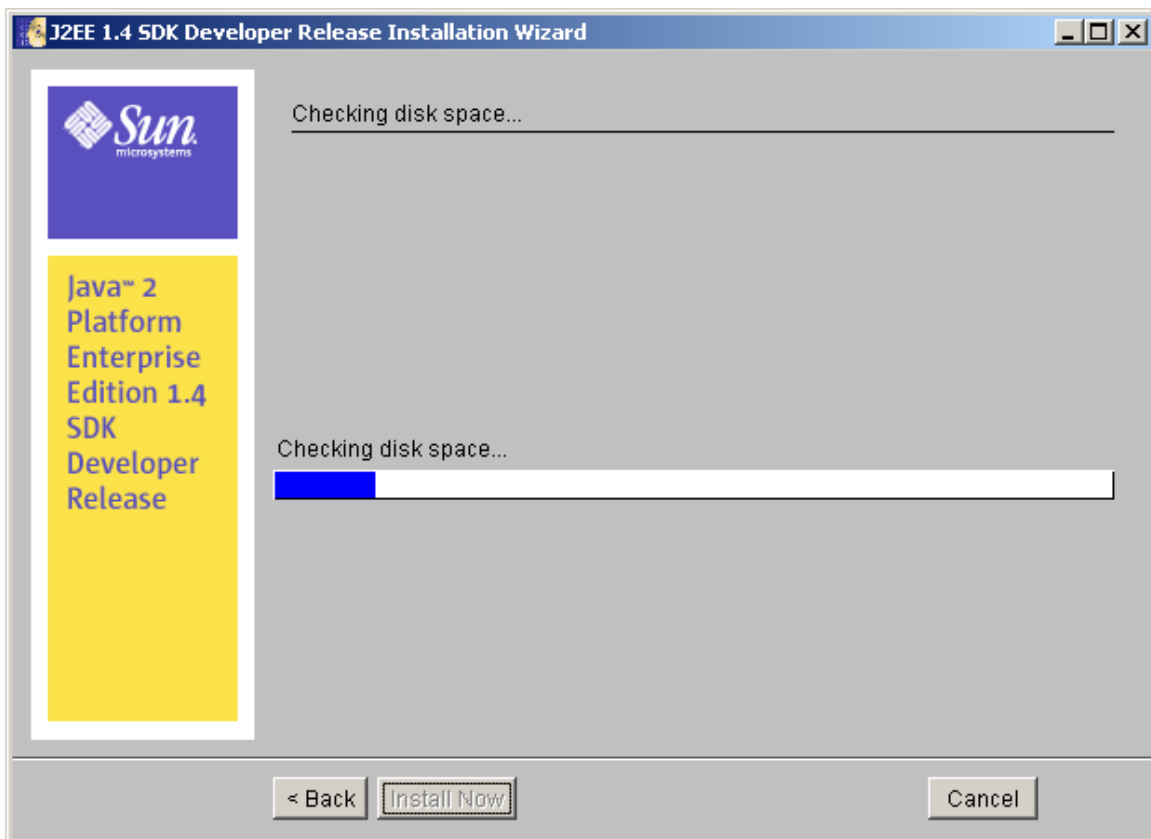
*The admin user name and password must be provided when performing all admin functions.*

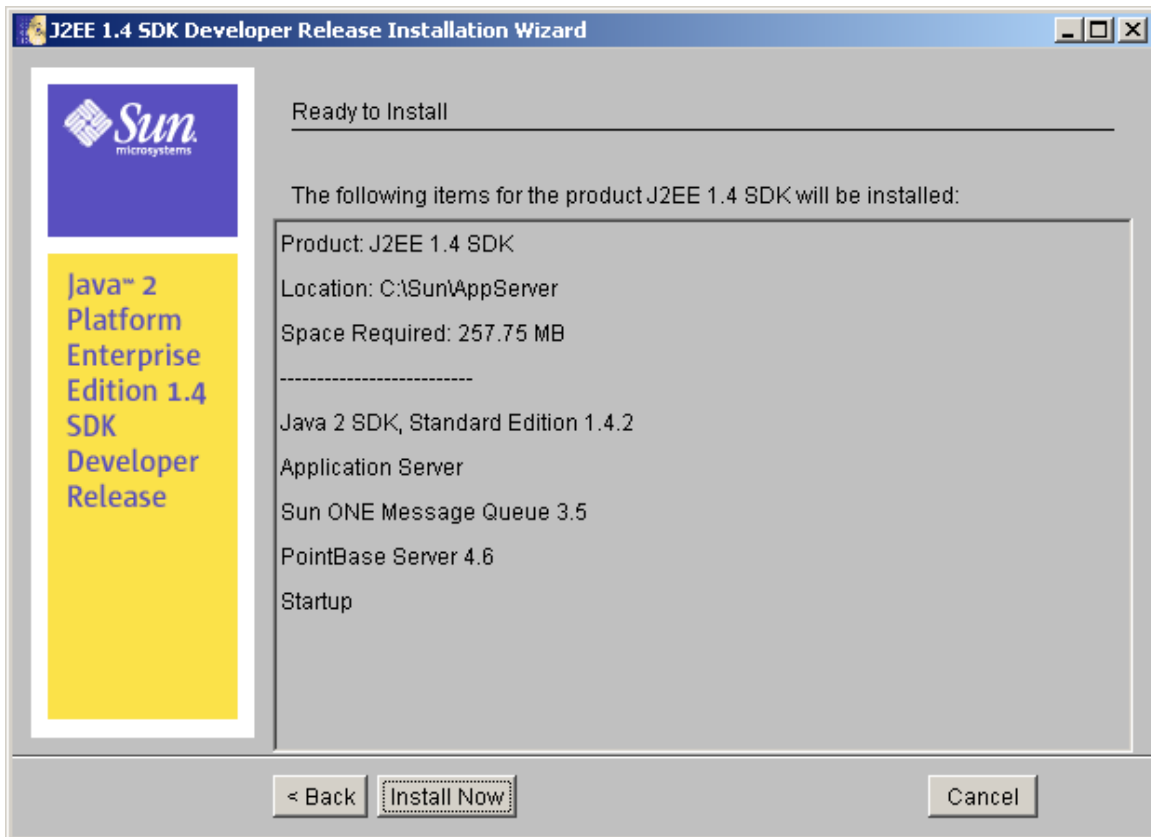
Admin Port:

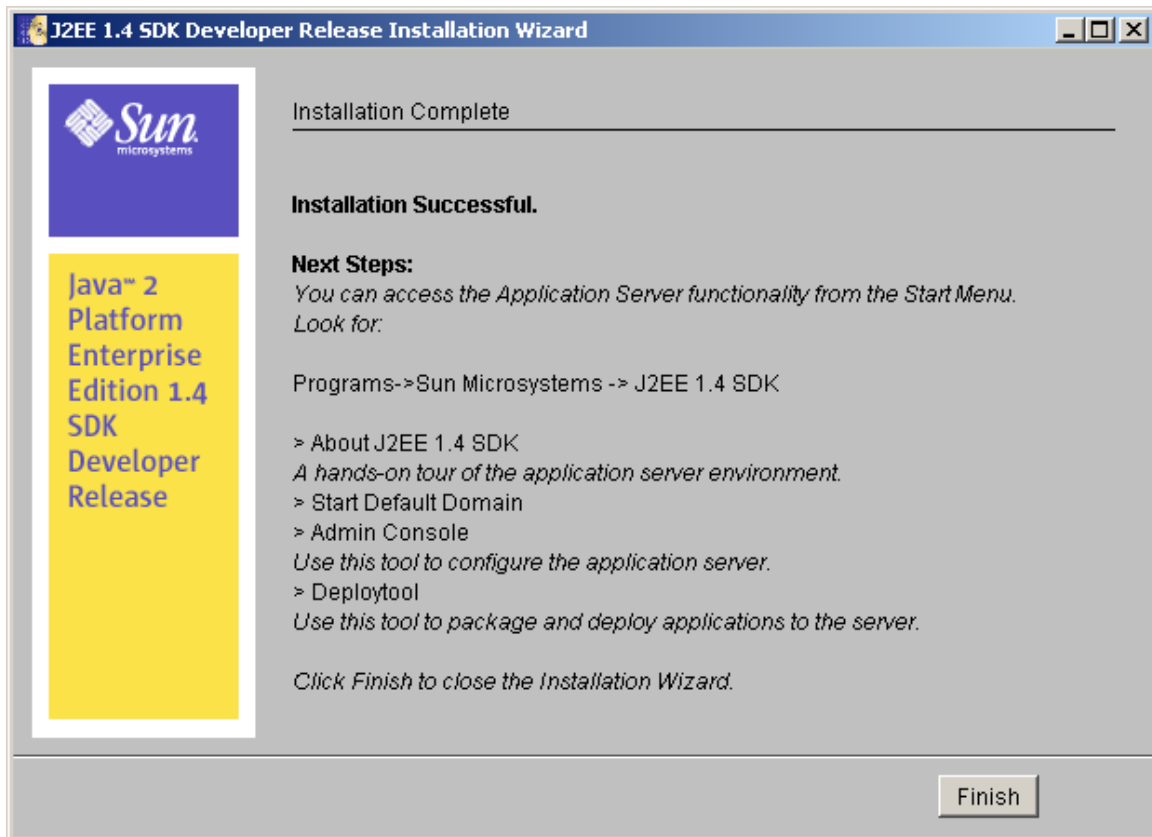
HTTP Port:

HTTPS Port:



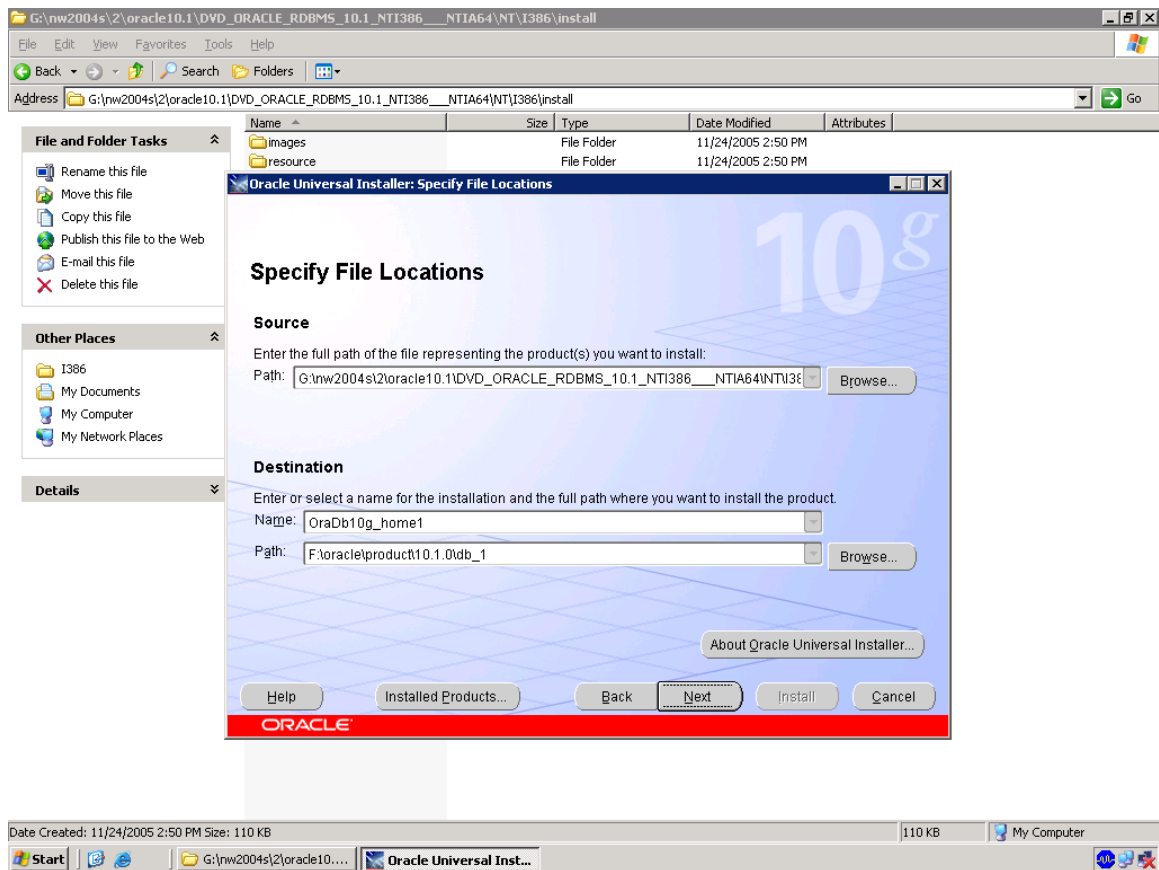






The installation has been completed successfully. Click on Finish tab

b. Installation of Oracle 10.1 software.



Navigate to oracle 10.1 software cd , double click setup in install folder as shown.

Oracle Universal Installer: Specify File Locations

## Specify File Locations

### Source

Enter the full path of the file representing the product(s) you want to install:

Path:  Browse...

### Destination

Enter or select a name for the installation and the full path where you want to install the product.

Name:

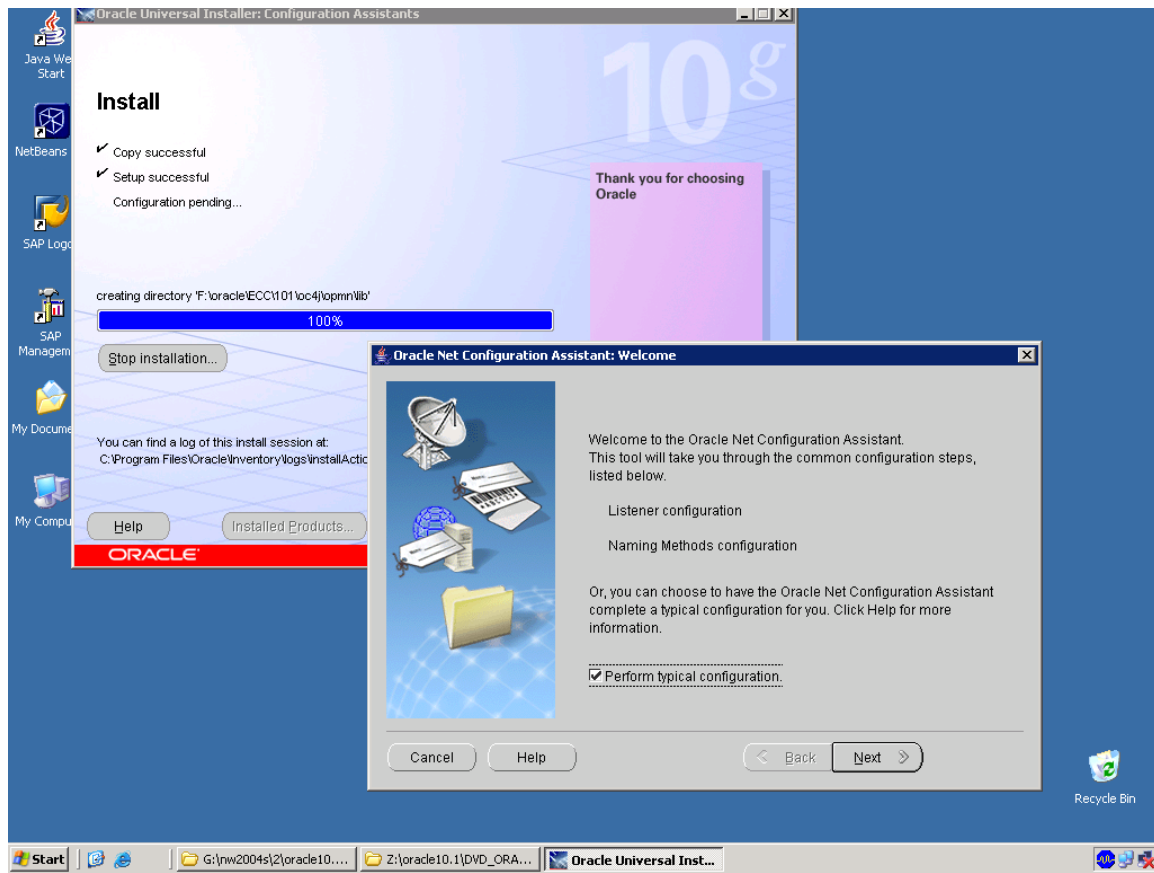
Path:  Browse...

About Oracle Universal Installer...

Help Installed Products... Back Next Install Cancel

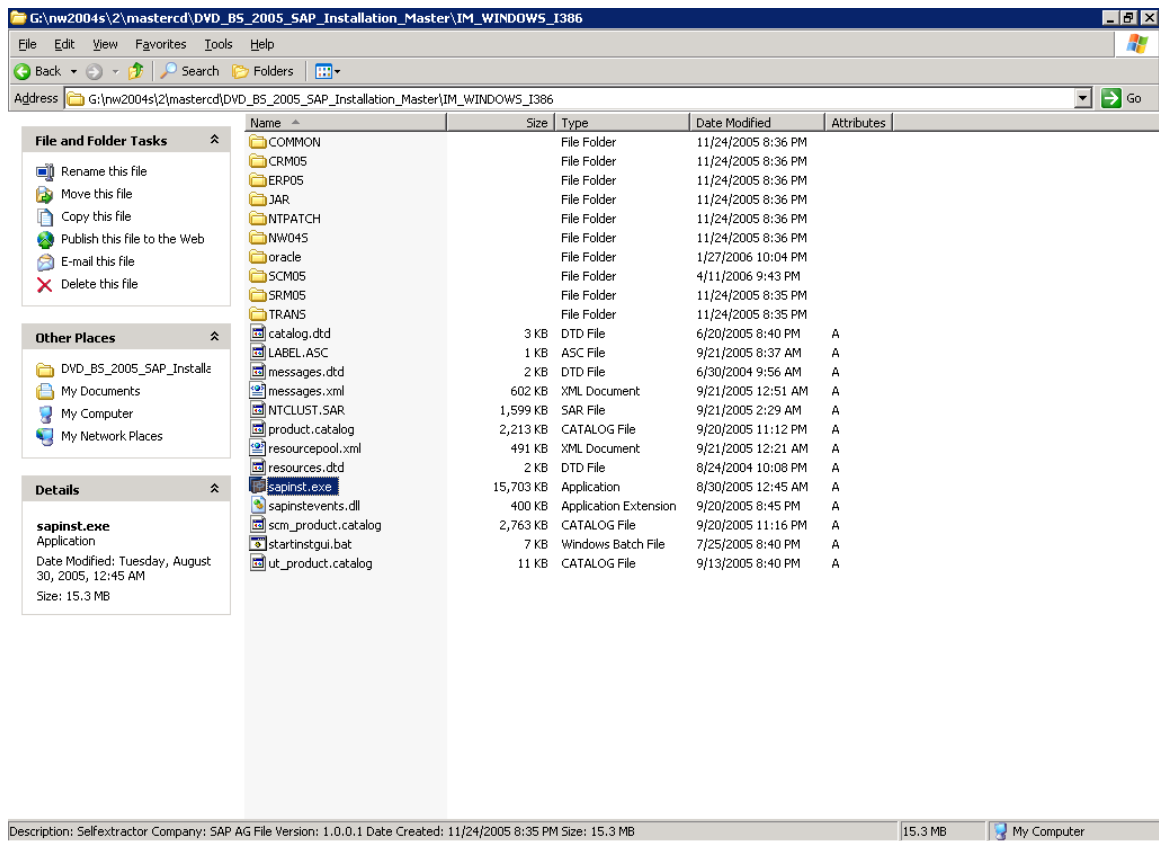
ORACLE



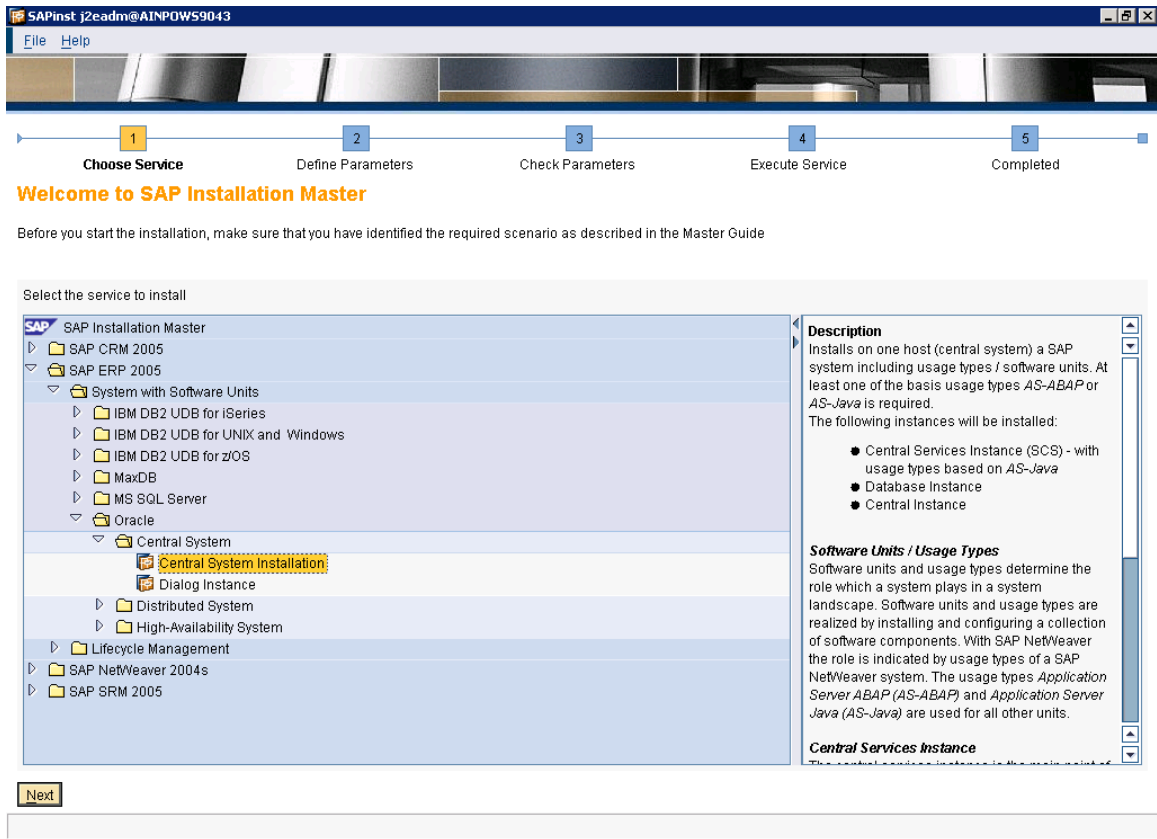


Stop all the services of oracle to install the oracle patch.

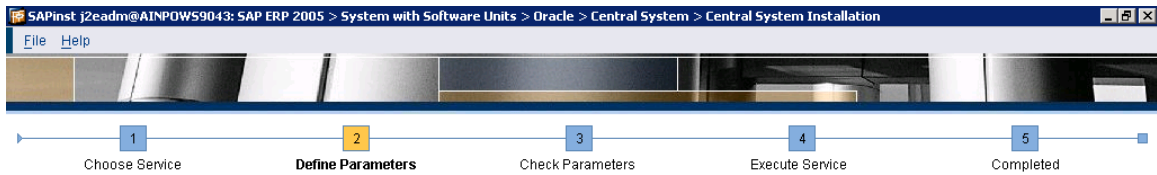
Main Installation of ERP2005.



Navigate to sapinst.exe in mastercd.



For installation of ERP2005 navigate to SAP ERP 2005 → oracle & central system installation.



## SAP System > Software Units

Before selecting the software units/processes, make sure that you have identified the required scenario as described in the Master Guide

### ERP 2005 Software Units

Software units or usage types are installation units that determine the role that a system plays in a given scenario. A usage type can be run together with others in one system or separately in different systems.

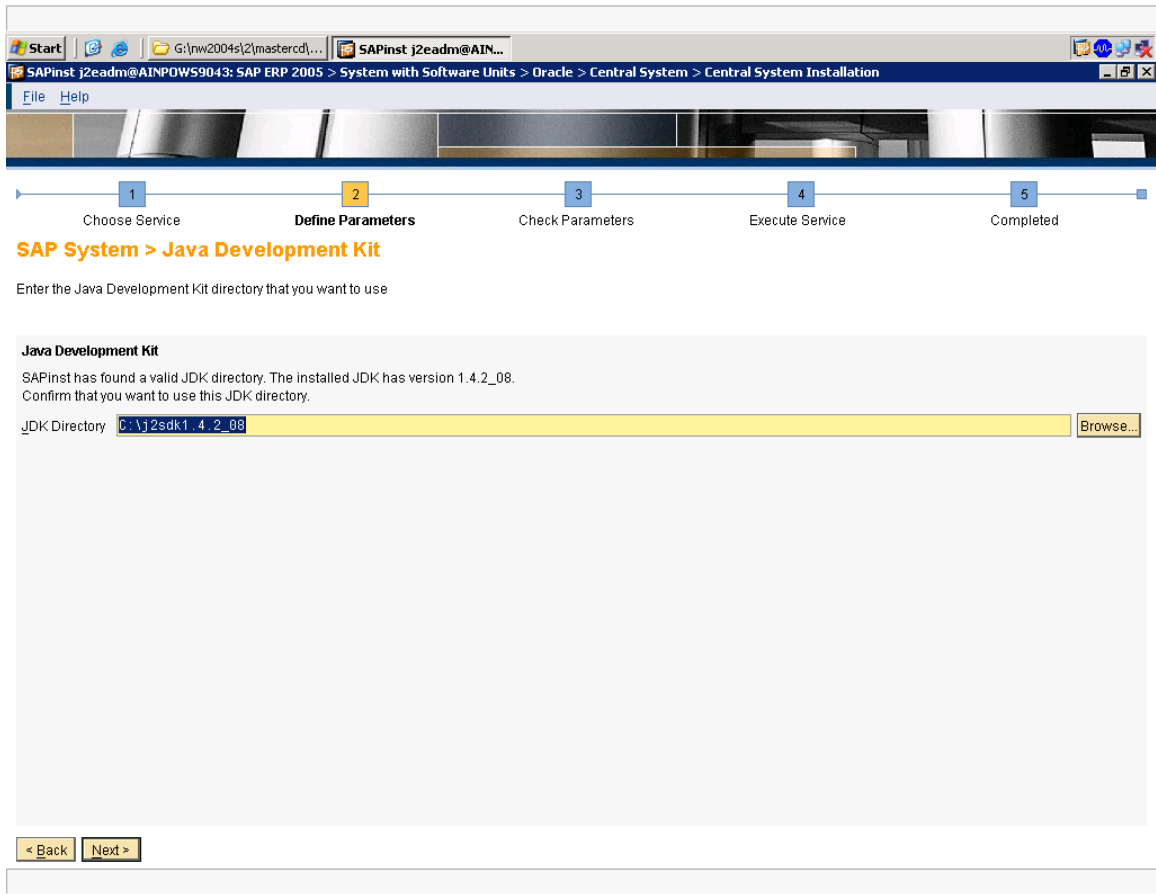
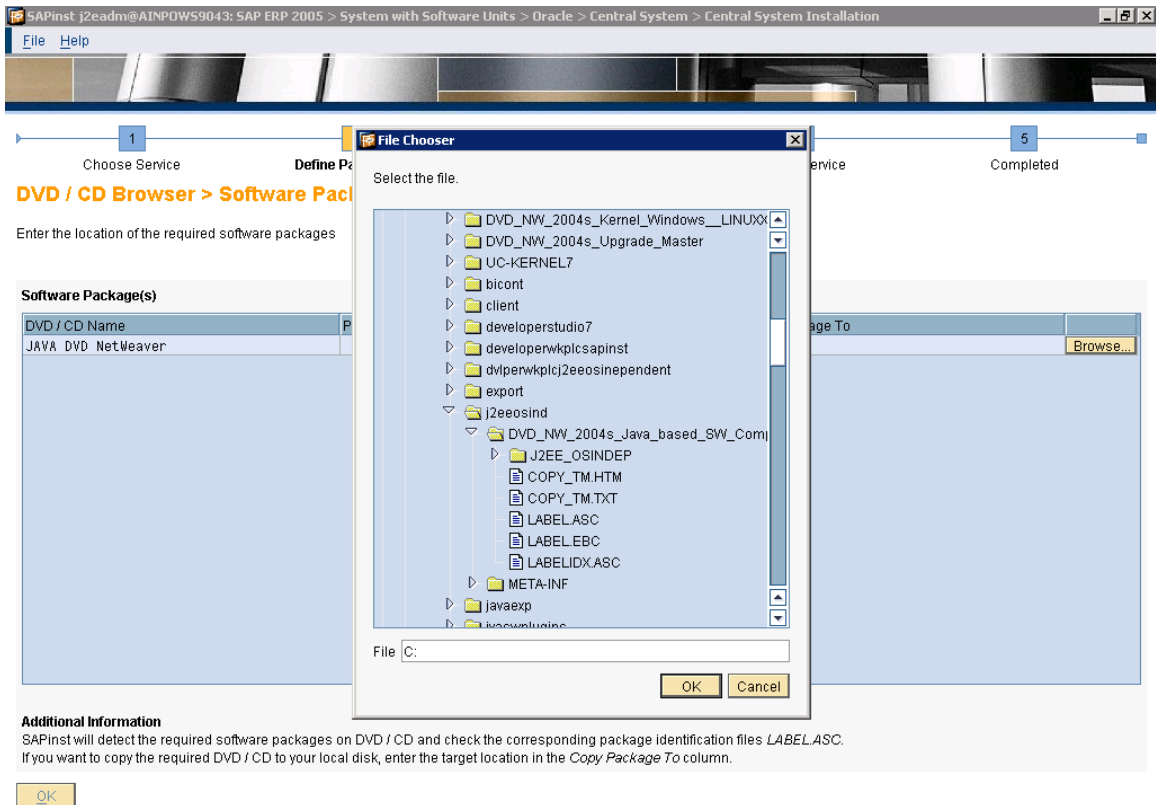
The usage types *AS-ABAP* and *AS-Java* are basis for all other usage types.

Install	Software Unit	Description	Vendor	Depends On
<input checked="" type="checkbox"/>	ECC	ERP 2005 Central Component	sap.com	AS-ABAP
<input type="checkbox"/>	BD	ERP 2005 Biller Direct	sap.com	AS-Java
<input type="checkbox"/>	BP-ERP	ERP 2005 Business Packages	sap.com	AS-Java, EP, XSS
<input type="checkbox"/>	LSOCP	ERP 2005 Learning Solution Con...	sap.com	AS-Java
<input type="checkbox"/>	XECO	ERP 2005 Extended E-Selling Co...	sap.com	AS-Java
<input type="checkbox"/>	XSS	ERP 2005 Self Services	sap.com	AS-Java, EP, BP-ERP

### Additional NetWeaver Software Units

Install	Software Unit	Description	Vendor	Depends On
<input checked="" type="checkbox"/>	AS-ABAP	NetWeaver Application Server ABAP	sap.com	
<input checked="" type="checkbox"/>	AS-Java	NetWeaver Application Server Java	sap.com	
<input type="checkbox"/>	BI-Java	NetWeaver BI Java	sap.com	AS-Java, EP
<input type="checkbox"/>	DI	NetWeaver Development Infrastr...	sap.com	AS-Java
<input type="checkbox"/>	EP	NetWeaver Enterprise Portal	sap.com	AS-Java
<input type="checkbox"/>	MI	NetWeaver Mobile Infrastructure	sap.com	AS-ABAP, AS-Java
<input type="checkbox"/>	PI	NetWeaver Process Integration	sap.com	AS-ABAP, AS-Java

< Back   Next >



SAPinst j2eadm@AINPOWS9043: SAP ERP 2005 > System with Software Units > Oracle > Central System > Central System Installation

File Help

1 Choose Service 2 Define Parameters 3 Check Parameters 4 Execute Service 5 Completed

### SAP System > General Parameters

Enter the system ID and installation drive

**SAP System Parameters**

SAP System ID (SAPSID)

Installation Drive

Unicode System (recommended) ☒

**Additional Information**

The SAP System ID is an identifier for your SAP system. It must be unique throughout your system landscape.  
The system will be installed under <Installation Drive>\usr\sap<SAPSID>\...

< Back Next >

SAPinst j2eadm@AINPOWS9043: SAP ERP 2005 > System with Software Units > Oracle > Central System > Central System Installation

File Help

1 Choose Service 2 Define Parameters 3 Check Parameters 4 Execute Service 5 Completed

### SAP System > Windows Domain

Enter the Windows domain in which the SAP system accounts are created

**SAP System User Domain**

Domain Model ☒ Local installation  
☐ Use domain of current user  
☐ Use different domain

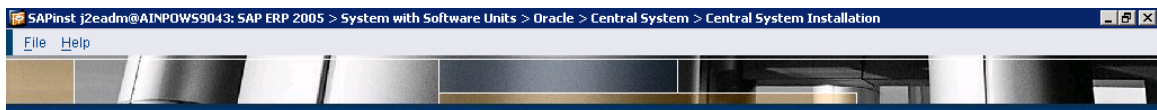
Windows Domain

**Additional Information**

If you want the SAP system to run on a single machine, you can perform a *Local installation*.  
For high availability with MSCS you must perform a domain installation.  
If you want the system to be distributed across more than one machine, we strongly recommend a domain installation. In this case, you have to be a domain administrator to create the operating system users during the installation, or all operating system users have to be created before the installation.  
For more information about Windows domain structures, see the Windows documentation.

< Back Next >

Go to next dialog



## SAP System > OS User Passwords

Enter the passwords of the operating system users

### SAP System Administrator

Account: AINPOWS9043eccadm

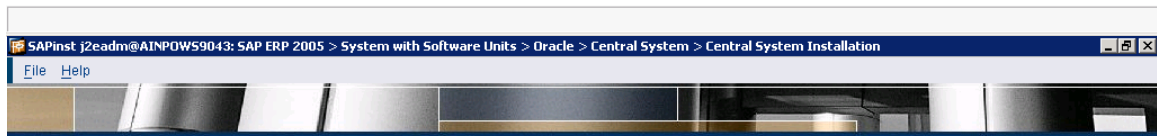
Password of SAP System Administrator

### SAP System Service User

Account: AINPOWS9043SAPServiceECC

Password of SAP System Service User

< Back Next >



## SAP System > Database Parameters

Enter the database parameters

### Database Parameters

Database ID (DBSID)

Database Host

### Additional Information

If you want to use an existing database with a valid database release for this installation, enter the database ID of the existing database.

< Back Next >



## Prerequisites Checker > Data File for Check

Select the file containing data for prerequisites checks

### Prerequisites Checker

Your installation host will be checked for compliance with most of the prerequisites defined in the installation guide.

By default, a *Data File for Check* is located on the Installation Master DVD. SAPinst automatically suggests the path of this file. For updated versions of the *Data File for Check*, see **SAP Note 855498**.

Data File for Check



## Prerequisites Checker > Results

Read the results of the prerequisites analysis carefully

Condition	Result Code	Severity	Message	More Information
RAM Size	Condition not met	HIGH	For the selected services at least 2048 MB RAM are required. Current value: 1023 MB. If the current value is much lower than the required value this will significantly slow down the installation or make it even impossible. In this case stop the installation, add more RAM and start it again. (Updated 2005-06-24)	<a href="#">Click here</a>
Host name	OK		The host name has to be an alphanumerical string of characters [A-Z] and [a-z] and digits [0-9], and the hyphen (or minus) character "-". Although the newer RFCs permit host names beginning with digits, we recommend that host names begin with an alpha character. Maximum host name length is 13. Current host name: AINPOWS9043. See also SAP Note 611361. (Updated 2005-06-24)	<a href="#">Click here</a>
Domain Controller	OK		Installations on domain controllers are not supported. (Updated 2005-06-24)	<a href="#">Click here</a>
Names of well known groups	OK		Checking the names of some well known groups. Expected result: "everyone, users, guests, power users". Current result: "everyone, users, guests, power users". If this condition does not hold it is most probably because you are not using an English international version of Windows but a localized one. Only English international versions of Windows are supported. See also SAP Note 362379. (Updated 2005-06-24)	<a href="#">Click here</a>
Operating System Version	OK		The following Windows operating system versions are supported: Windows Server 2003 Standard Edition, Windows Server 2003 Enterprise Edition, Windows Server 2003 Datacenter Edition (i. e. Version 5.2, product type Server). Current Windows version: Version 5.2, Service Pack 0.0, product type: Server. You can check the current version of your operating system by running winver using Start --> Run .... See also <a href="http://service.sap.com/platforms">http://service.sap.com/platforms</a> --> Product Availability Matrix. (Updated 2005-06-24)	<a href="#">Click here</a>
Swap Size	OK		For the selected services at least 4093 MB swap space are recommended. Current value: 4516 MB. (Updated 2005-06-24)	<a href="#">Click here</a>



1 Choose Service 2 **Define Parameters** 3 Check Parameters 4 Execute Service 5 Completed

## Oracle > Database System

Enter the parameters of the database system

**Database Instance Parameters**

DB Home

DB Server Version

**Instance Memory Management**

Instance RAM (MB)  Total RAM (MB)

**Database Schema Parameters**

The new default for *ABAP Schema* is *SAPSR3* and the new default for *Java Schema* is *SAPSR3DB*.

ABAP Schema

Password of ABAP Schema

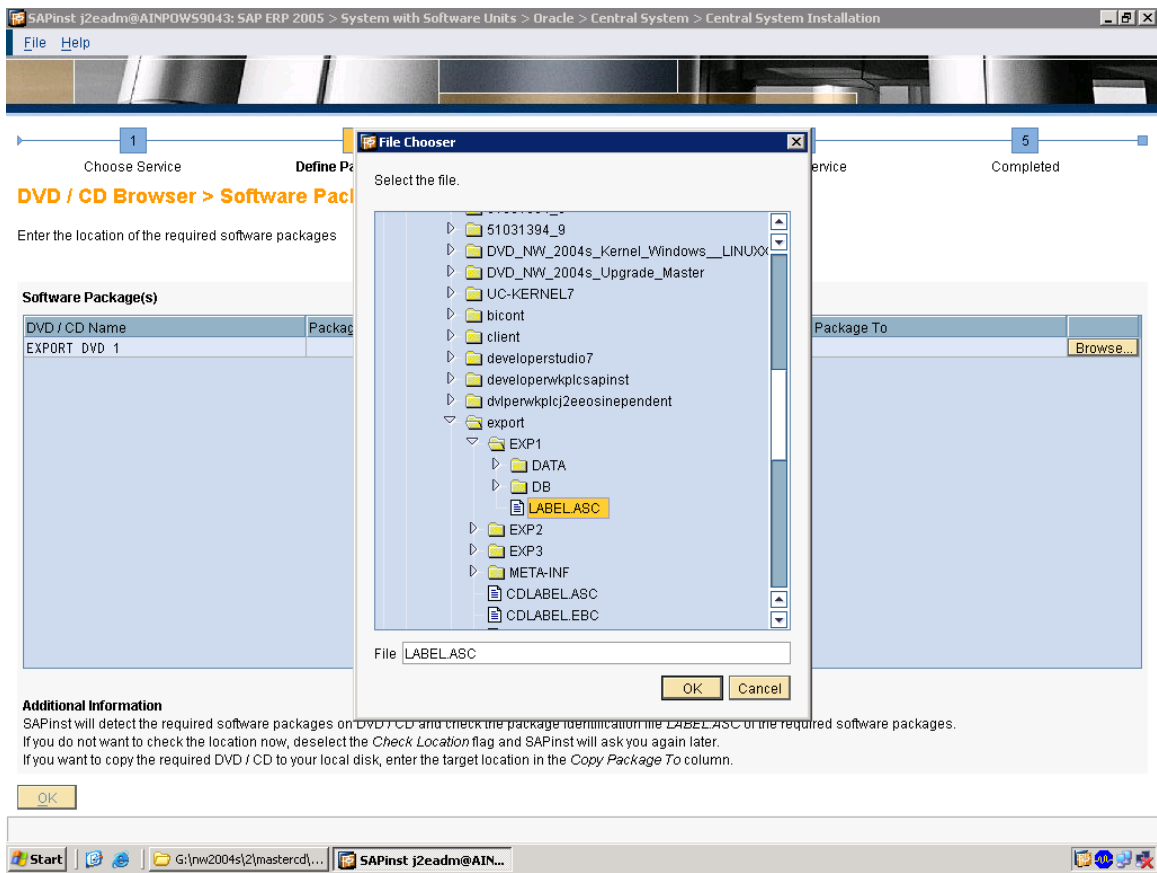
Confirm

Java Schema

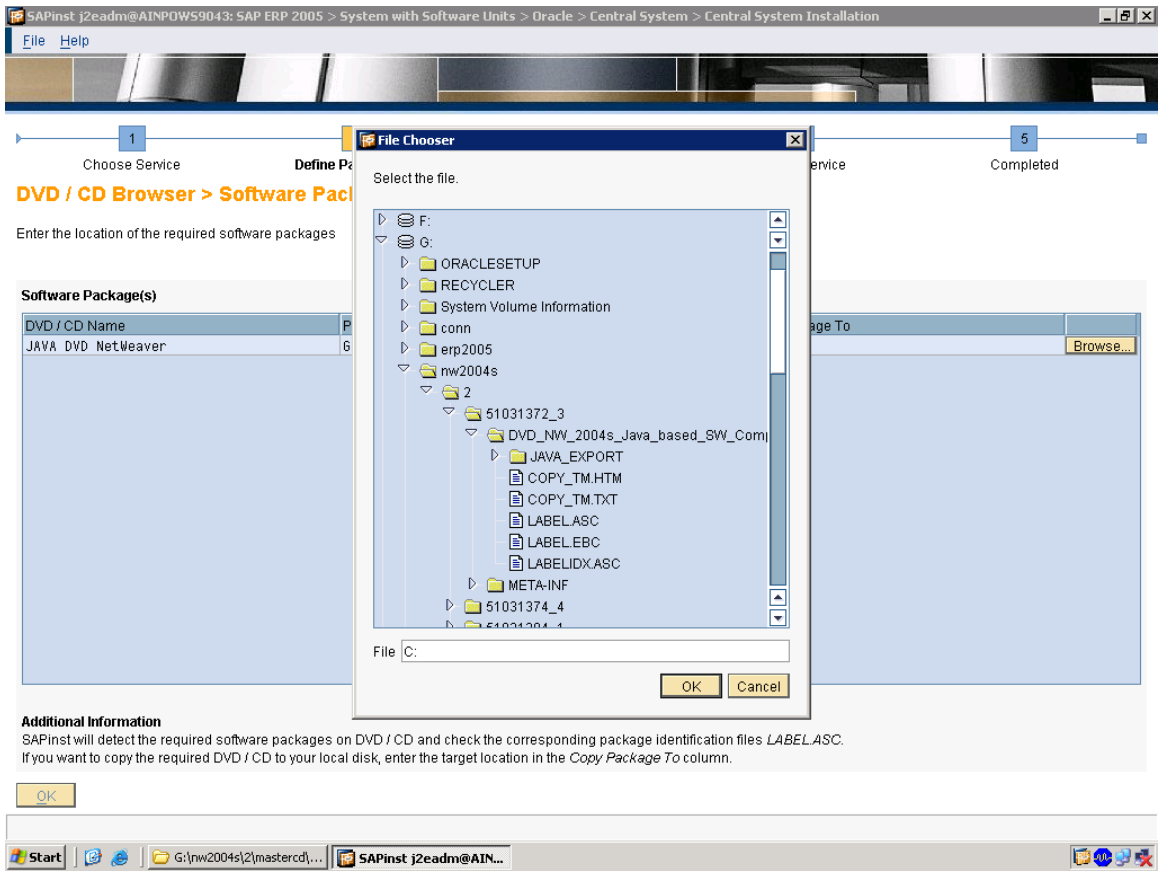
Password of Java Schema

Confirm

< Back Next >



Please enter the first cd of erp i.e 1/11





1 Choose Service 2 **Define Parameters** 3 Check Parameters 4 Execute Service 5 Completed

## Oracle > Database System

Enter the parameters of the database system

**Database Server Drives**

Local Drives	Free Space [MB]
F:	82300
E:	79100
G:	30600
C:	6400

**Distribution of Database Directories**

Sapdata Drive	Sapdata Directory	Required Disk Space [MB]
F:	\oracle\ECC\sapdata1	21322
F:	\oracle\ECC\sapdata2	19800
F:	\oracle\ECC\sapdata3	19800
F:	\oracle\ECC\sapdata4	20900

Redo Log Archives (origlog/AB) G: Oracle Archives (oraarch) F:

Redo Log Archives (mirrlog/AB) E:

**Database Advanced Options**

DB Advanced Configuration ☐

**Additional Information**

In the *DB Advanced Configuration* section, you can change parameters for: create database, create tablespaces, file system distribution and storage. This section is for oracle experts only.

< Back Next >

SAPinst j2eadm@AINPOWS9043: SAP ERP 2005 > System with Software Units > Oracle > Central System > Central System Installation

File Help

1

Choose Service

2

Define Parameters

3

Check Parameters

4

Execute Service

5

Completed

Oracle > Listener Configuration

Enter the listener name and port

**Important Information**

We recommend that you do not change the default values for *Listener Name* and *Listener Port*. You may change these default values only if you have more than one Oracle database on this installation host. In this case, see SAP Note 98252.

If you decide to keep the entries in an existing network configuration file, SAPinst will try to merge the new entries into the existing file instead of replacing the file.

**Oracle Listener Configuration**

Listener Name

LISTENER

Listener Port

1527

**Network Configuration Files**

Keep listener.ora

☐

Keep tnsnames.ora

☐

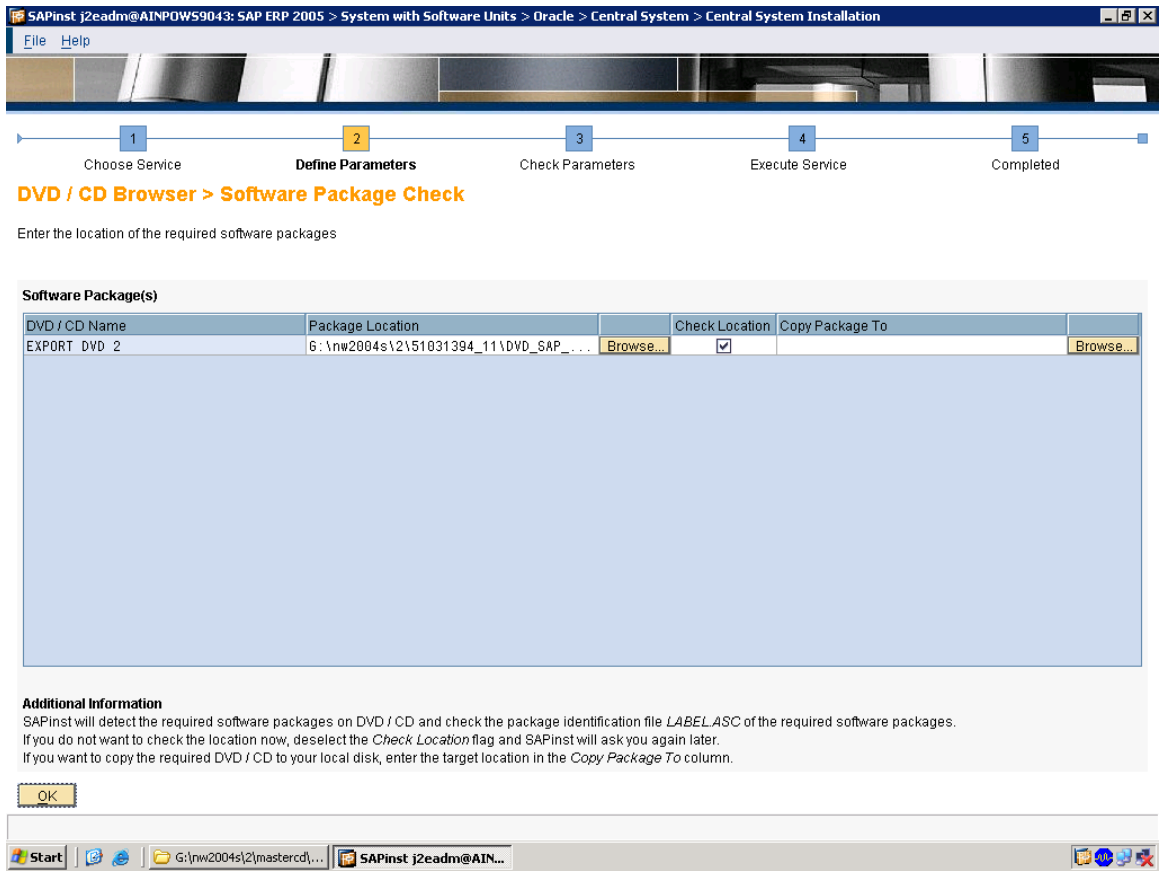
< Back

Next >

Start

G:\nw2004s\2\mastercd\...

SAPinst j2eadm@AIN...





1 Choose Service 2 **Define Parameters** 3 Check Parameters 4 Execute Service 5 Completed

### DVD / CD Browser > Software Package Check

Enter the location of the required software packages

#### Software Package(s)

DVD / CD Name	Package Location		Check Location	Copy Package To	
EXPORT DVD 1	6:\nw2004s\2\51031394_3\DVD_SAP_E...	Browse...	<input checked="" type="checkbox"/>		Browse...
EXPORT DVD 1	6:\nw2004s\2\51031394_4\DVD_SAP_E...	Browse...	<input checked="" type="checkbox"/>		Browse...
EXPORT DVD 1	6:\nw2004s\2\51031394_5\DVD_SAP_E...	Browse...	<input checked="" type="checkbox"/>		Browse...
EXPORT DVD 1	6:\nw2004s\2\51031394_6\DVD_SAP_E...	Browse...	<input checked="" type="checkbox"/>		Browse...
EXPORT DVD 2	6:\nw2004s\2\51031394_7\DVD_SAP_E...	Browse...	<input checked="" type="checkbox"/>		Browse...
EXPORT DVD 2	6:\nw2004s\2\51031394_8\DVD_SAP_E...	Browse...	<input checked="" type="checkbox"/>		Browse...
EXPORT DVD 2	6:\nw2004s\2\51031394_9\DVD_SAP_E...	Browse...	<input checked="" type="checkbox"/>		Browse...
EXPORT DVD 2	6:\nw2004s\2\51031394_10\DVD_SAP_...	Browse...	<input checked="" type="checkbox"/>		Browse...

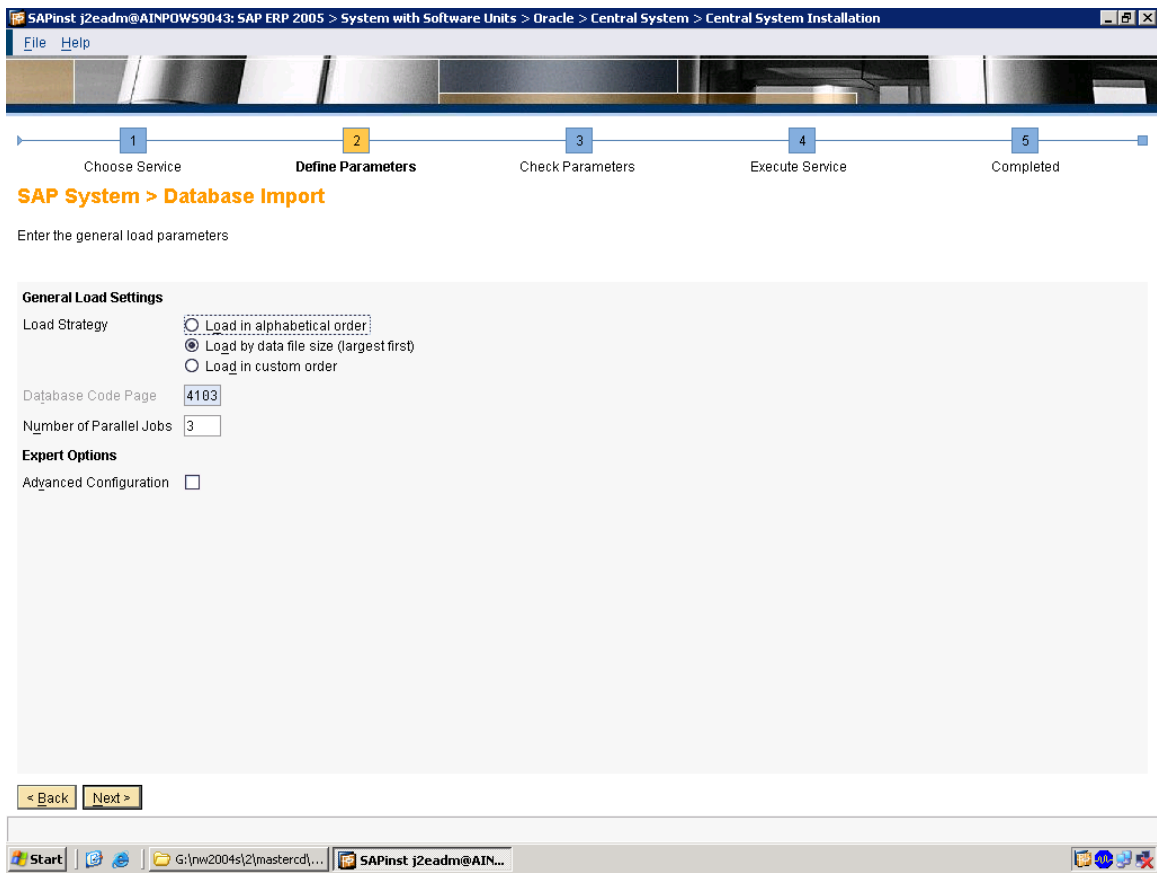
#### Additional Information

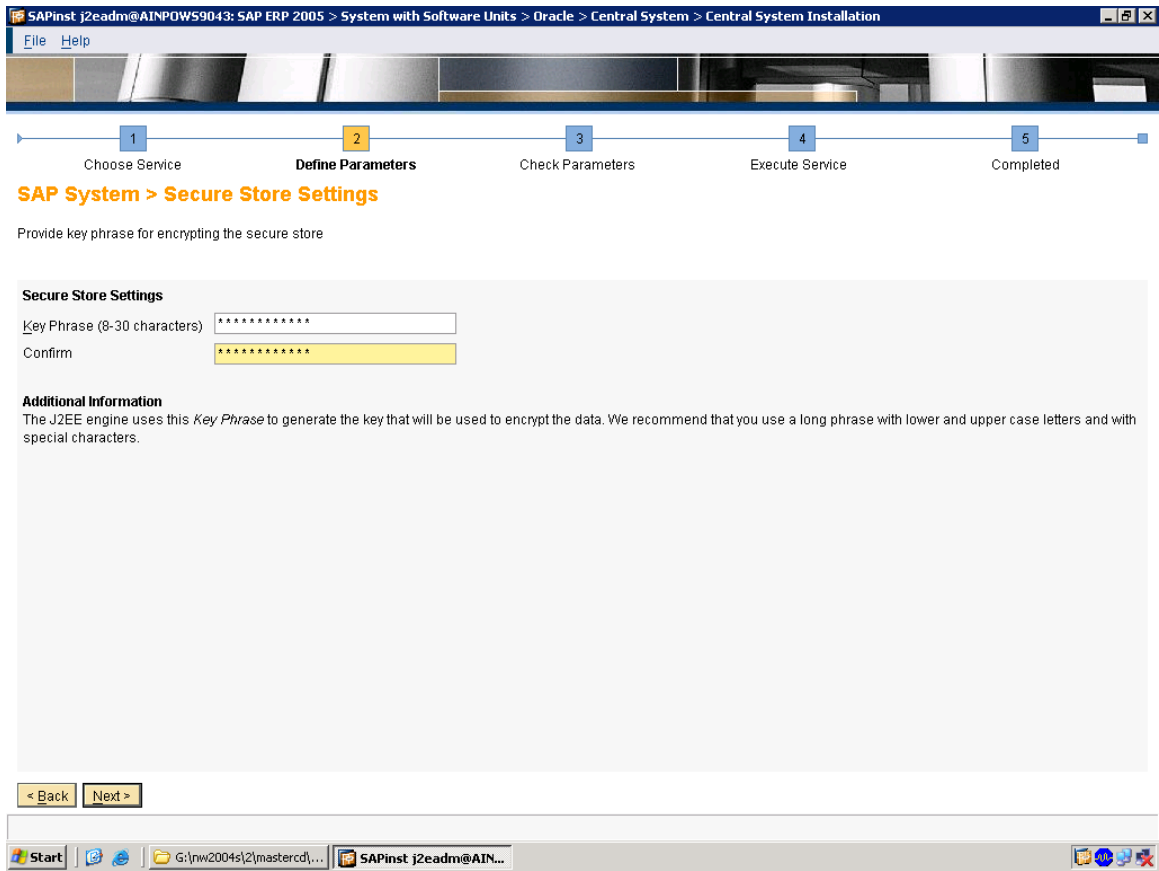
SAPInst will detect the required software packages on DVD / CD and check the package identification file *LABEL.ASC* of the required software packages.

If you do not want to check the location now, deselect the *Check Location* flag and SAPInst will ask you again later.

If you want to copy the required DVD / CD to your local disk, enter the target location in the *Copy Package To* column.

OK







1 Choose Service 2 **Define Parameters** 3 Check Parameters 4 Execute Service 5 Completed

## ABAP System > Create Database Statistics

Specify whether you want the statistics to be created automatically after the import ends

### At Import End

Database Statistics ☒ Create statistics at import end  
☐ Skip statistics creation

Program Call `brconnect.exe -u / -c -f stats -o summary -o SAPSR3 -p 4`

### Additional Information

If you skip the database statistics creation your database may run with lower performance.

< Back Next >



1 Choose Service 2 **Define Parameters** 3 Check Parameters 4 Execute Service 5 Completed

## SAP System > SCS Instance

Enter the parameters for the SAP Central Services (SCS) instance

### Detected SAP System Instances

SAPinst found the following SAP system instances on this host:

SAP System ID	Instance Number	Instance Name

### SCS Instance Parameters

SCS Instance Number

Internal SCS Messaging Service Port (leave empty for default)

### Additional Information

The SCS instance requires an *Instance Number* as a technical identifier for internal processes. This number must be unique for this installation host. The instance-specific *Internal Messaging Service Port* is required as a unique internal communication channel.

< Back Next >



## SAP System > Central Instance

Enter the central instance parameters

### Detected SAP System Instances

SAPinst found the following SAP system instances on this host:

SAP System ID (SAPSID)	Instance Number	Instance Name
ECC	00	SCS00

### Central Instance Parameters

C\ Instance Number

C\ Messaging Service Port (leave empty for default)

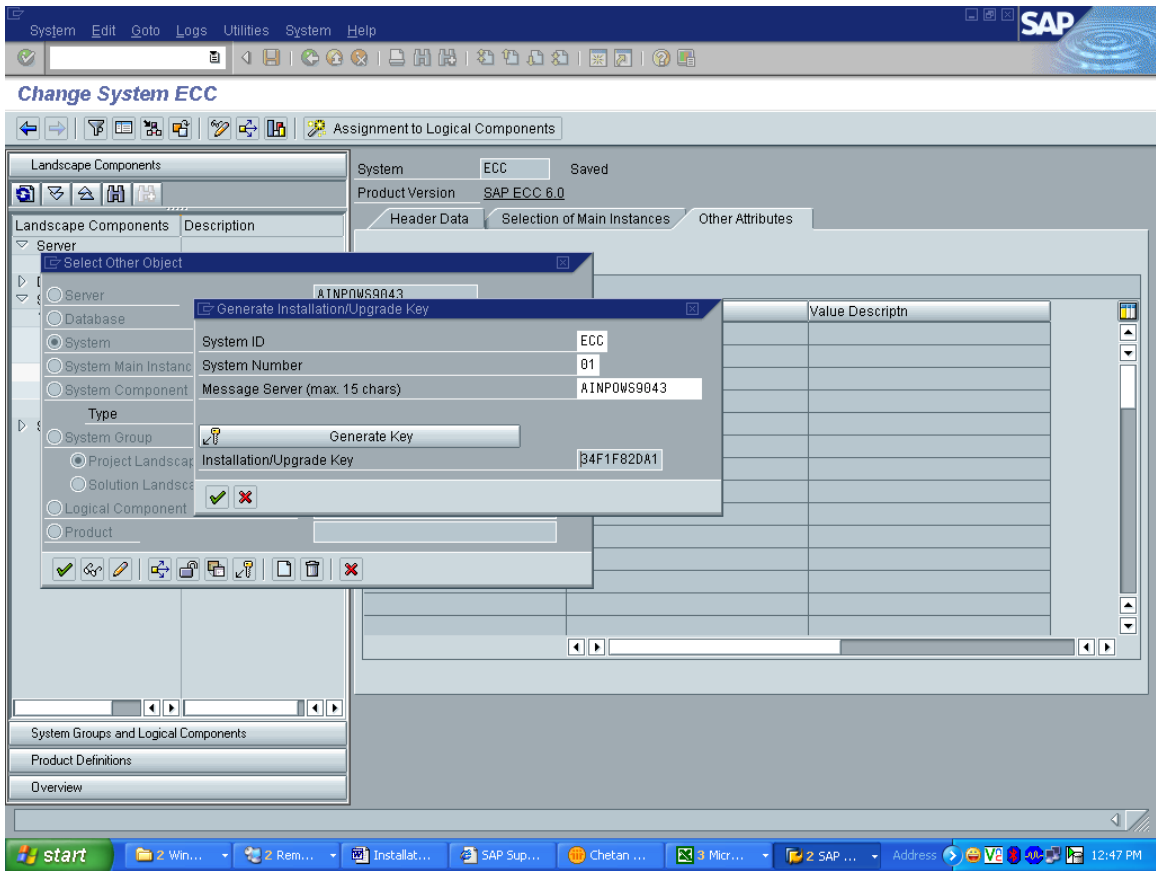
Internal CI Messaging Service Port (leave empty for default)

SAP Solution Manager Key

### Additional Information

The *Instance Number* for the central instance serves as a technical identifier for controlling internal processes (such as assigned memory). This number must be unique for this installation host. The instance-specific *Internal Messaging Service Port* for internal communication and the *Messaging Service Port* are required as a unique communication channel. The *SAP Solution Manager Key* is required for the installation or upgrade. Further information can be found in the installation guide, the SAP Service Marketplace and SAP note 805390.

< Back    Next >



SAPinst ECCADM@AINPOWS9043: SAP ERP 2005 > System with Software Units > Oracle > Central System > Central S...

File Help

12345

Choose ServiceDefine ParametersCheck ParametersExecute ServiceCompleted

### SAP System > Central Instance

Enter the central instance parameters

**Detected SAP System Instances**  
SAPinst found the following SAP system instances on this host:

SAP System ID (SAPSID)	Instance Number	Instance Name
ECC	00	SCS00

**Central Instance Parameters**  
CI Instance Number01  
CI Messaging Service Port (leave empty for default)  
Internal CI Messaging Service Port (leave empty for default)  
SAP Solution Manager Key34F1F82DA1

**Additional Information**  
The *Instance Number* for the central instance serves as a technical identifier for controlling internal processes (such as assigned memory). This number must be unique for this installation host. The instance-specific *Internal Messaging Service Port* for internal communication and the *Messaging Service Port* are required as a unique communication channel. The *SAP Solution Manager Key* is required for the installation or upgrade. Further information can be found in the installation guide, the SAP Service Marketplace and SAP note 805390.

< BackNext >

74C:\nw2004s\oracle10C:\nw2004s\mastersServicesSAPinst ECCADM

SAPinst j2eadm@AINPOWS9043: SAP ERP 2005 > System with Software Units > Oracle > Central System > Central S...

File Help

1 Choose Service 2 Define Parameters 3 Check Parameters 4 Execute Service 5 Completed

### SAP System > ABAP UME

Enter the J2EE engine user passwords

**J2EE Engine Connection**

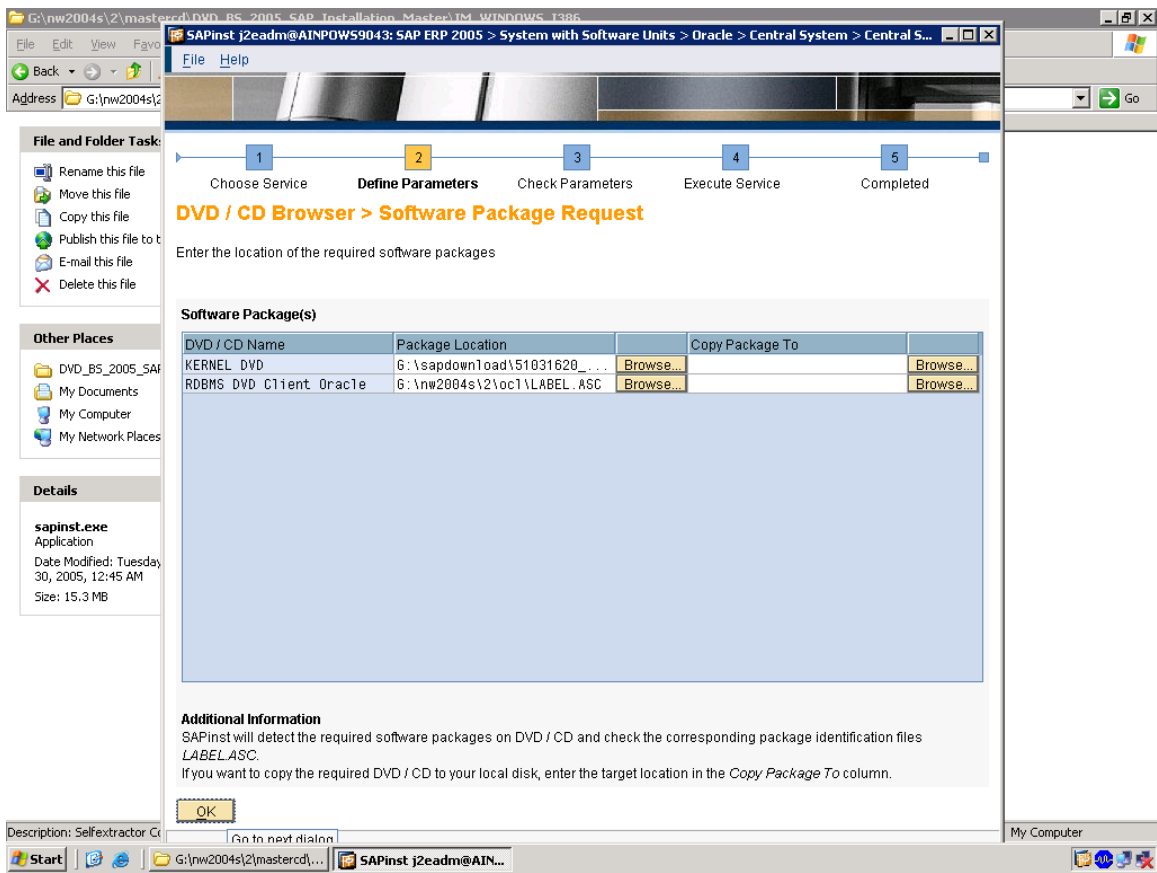
Password of J2EE_ADMIN	*****	Password of SDM	*****
Confirm	*****	Confirm	*****
Password of SAPJSF	*****		
Confirm	*****		

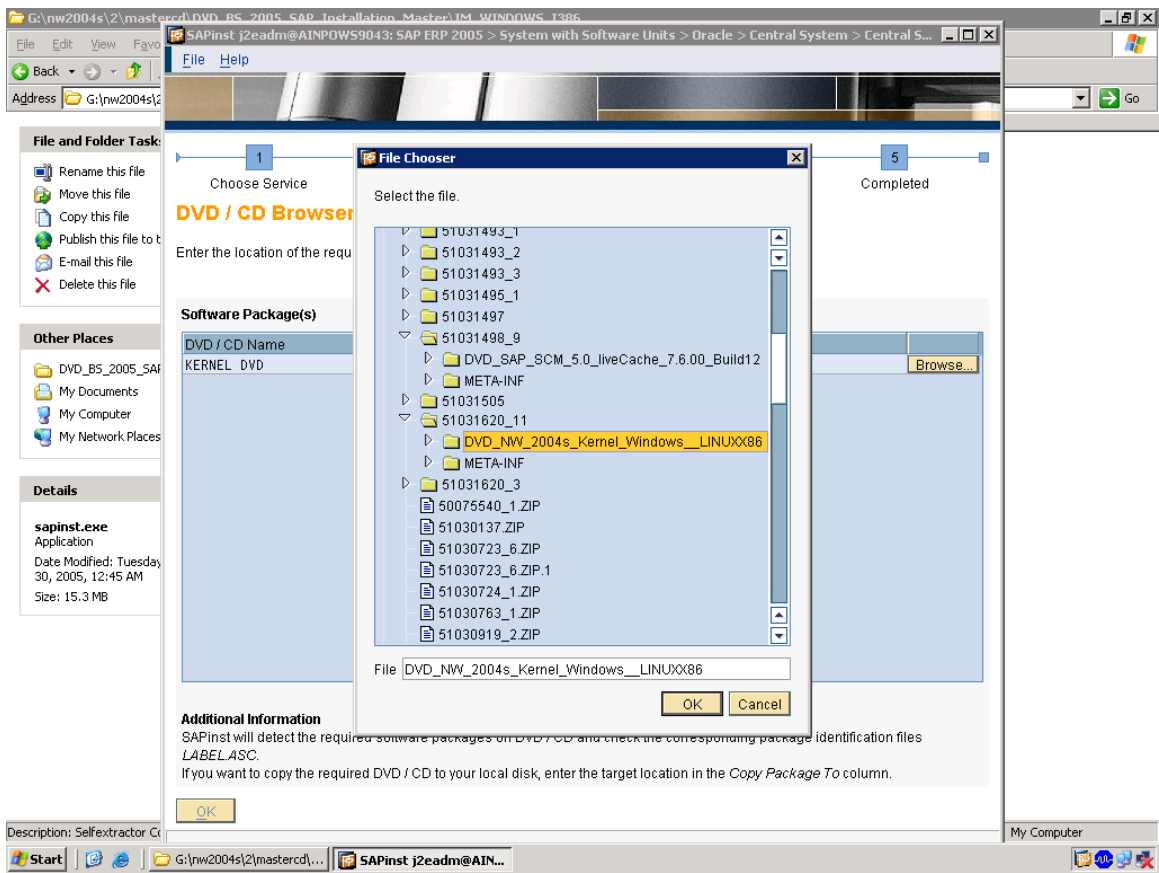
**Additional Information**

Further information about ABAP User Management Engine (ABAP UME): <http://help.sap.com> or SAP Note 718383.

The communication user *SAPJSF* is used for RFC between the Java stack and the ABAP stack. The ABAP users *J2EE\_ADMIN* and *J2EE\_GUEST* represent the default administrative and anonymous users for the J2EE engine. The *J2EE\_ADMIN* account has full control of the J2EE engine. After you have entered the passwords, SAPinst creates these accounts.

< Back Next >





SAPinst j2eadm@AINPOW59043: SAP ERP 2005 > System with Software Units > Oracle > Central System > Central S...

File Help

1

2

3

4

5

Choose ServiceDefine ParametersCheck ParametersExecute ServiceCompleted

SAP System > Unpack Archives

Select which archives to unpack

SAP System Archives

SAPinst has determined that the selected archives have to be unpacked. Choose *Next* to get the archives unpacked automatically from DVD to *SAP Global Host*.

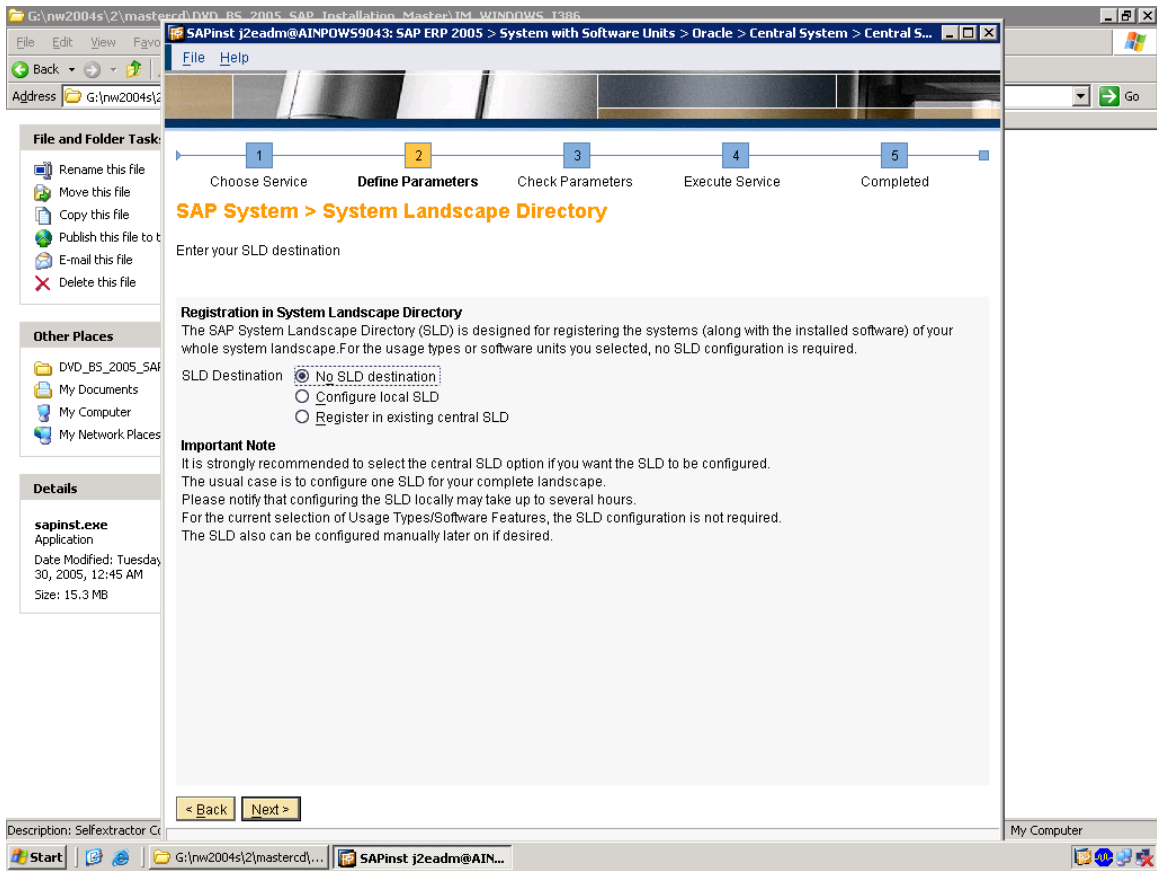
Unpack	Archive	Codepage	Destination	Downloaded To	
<input checked="" type="checkbox"/>	DBINDEP\SAPEXE...	Unicode	F:\usr\sap\ECC\SY...		Browse...
<input checked="" type="checkbox"/>	ORA\SAPEXEDB.SAR	Unicode	F:\usr\sap\ECC\SY...		Browse...
<input checked="" type="checkbox"/>	ORA\BATTOOLS.SAR	Unicode	F:\usr\sap\ECC\SY...		Browse...
<input checked="" type="checkbox"/>	DBINDEP\IGSEXE...	Unicode	F:\usr\sap\ECC\SY...		Browse...
<input checked="" type="checkbox"/>	DBINDEP\IGSHEL...	Unicode	F:\usr\sap\ECC\DV...		Browse...
<input checked="" type="checkbox"/>	OCL10232.SAR		F:\usr\sap\ECC\SY...		Browse...
<input type="checkbox"/>	SAPCRYPTO.CAR		F:\usr\sap\ECC\SY...		Browse...

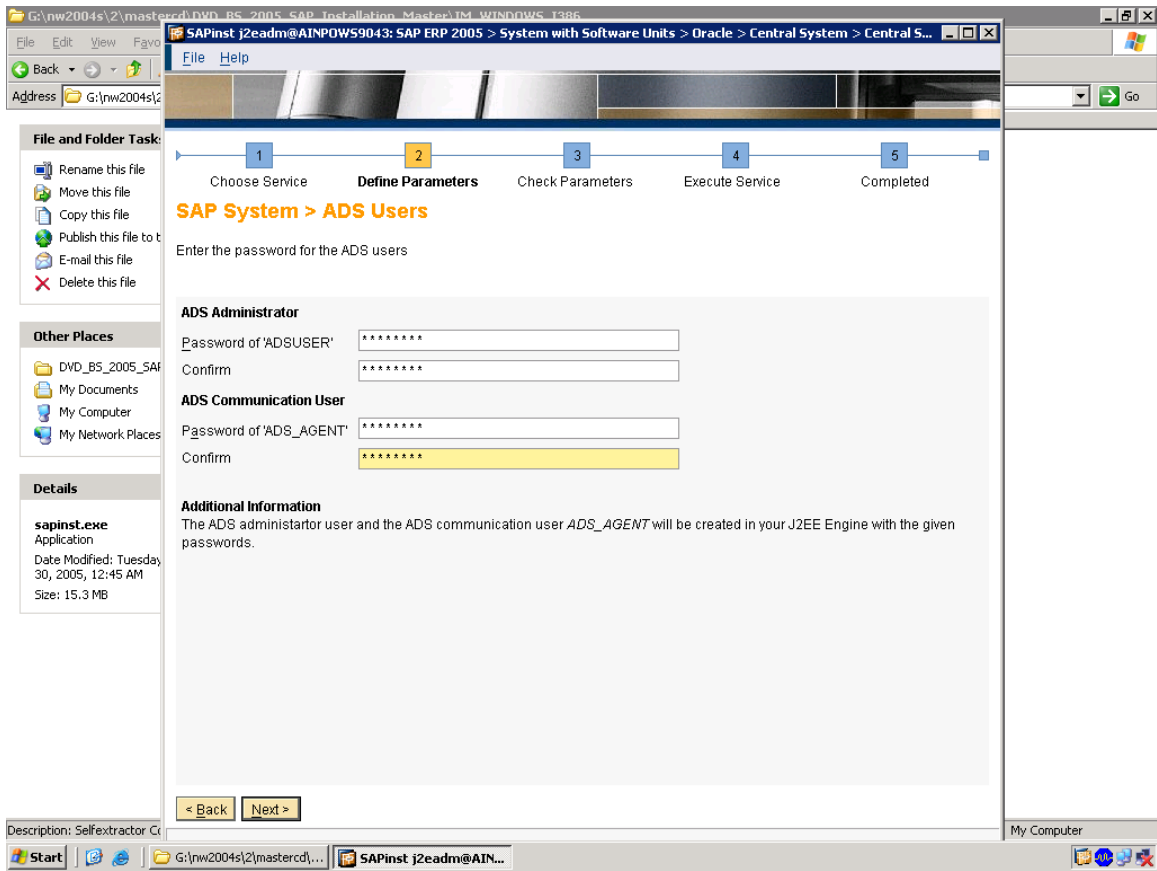
Additional Information

If you have downloaded newer versions of these archives from SAP Service Marketplace, enter their locations in column *Downloaded To*. Deselect *Unpack* for archives that you want to unpack manually; for instance if the destination is located on a network share for which the installation user does not have writing permissions.

< Back

Next >





G:\nw2004s\2\mastercd\DVD\_BS\_2005\_SAP\_Installation\_Master\TM\_WINDOWS\_1386

SAPInst j2eadm@AINPOW59043: SAP ERP 2005 > System with Software Units > Oracle > Central System > Central S...

File Edit View Favo

Back Address G:\nw2004s\2

File and Folder Task

Other Places

Details

1 Choose Service

2 Define Parameters

3 Check Parameters

4 Execute Service

5 Completed

Parameter Summary

Make a final review of the parameters before the service is executed

Parameter List

SAP System > Software Units

Table

Install	Software Unit	Description	Vendor	Depends On
<input checked="" type="checkbox"/>	AS-ABAP	NetWeaver Applica...	sap.com	
<input checked="" type="checkbox"/>	AS-Java	NetWeaver Applica...	sap.com	

☐ DVD / CD Browser > Software Package Request

Table

DVD / CD Name	Package Location	Copy Package To
JAVA DVD NetWeaver	G:\nw2004s\2\j2eeosind\DVD...	
JAVA DVD NetWeaver	G:\nw2004s\2\j2eeosind\3\DVD...	

☐ SAP System > Java Development Kit

JDK Directory

C:\j2sdk1.4.2\_08

☐ SAP System > General Parameters

SAP System ID (SAPSID)

ECC

Installation Drive

Start

Description: Selfextractor C...

My Computer

Start

G:\nw2004s\2\mastercd\...

SAPInst j2eadm@AIN...

My Computer

G:\nw2004s\2\mastercd\DVD\_B5\_2005\_SAP\_Installation\_Master\TM\_WINDOWS\_1386

SAPinst j2eadm@AINPOW59043: SAP ERP 2005 > System with Software Units > Oracle > Central System > Central S...

File Edit View Favo

Back Address G:\nw2004s\2

File and Folder Tasks

Rename this file

Move this file

Copy this file

Publish this file to t

E-mail this file

Delete this file

Other Places

DVD\_B5\_2005\_SAP

My Documents

My Computer

My Network Places

Details

sapinst.exe

Application

Date Modified: Tuesday, 30, 2005, 12:45 AM

Size: 15.3 MB

1 Choose Service

2 Define Parameters

3 Check Parameters

4 **Execute Service**

5 Completed

Task Progress

The task is running

Phase 4 of 43

Phase List

Update system DLLs

Update system DLLs

Install JCE policy file

Check Installation Prerequisites

Create users for SAP system

Install common system files

Unpack SAP archives

Install or check Oracle database

Evaluate Oracle database common parameters

Install Oracle client software

Configure Oracle server network

Prepare Oracle server configuration

Create Oracle database

Create or check Oracle tablespaces

Check Oracle NLS\_CHARACTERSET

Create Oracle database schema

Check Oracle patch

Install Oracle DBA tools

Import ARAP

The phase is in progress.

Description: Selfextractor C...

My Computer

Start

G:\nw2004s\2\mastercd\...

SAPinst j2eadm@AIN...

Credits to the Original Uploader in AF and thanks to the person involved in making this wonderful documentation with screenshots.

*Converted to PDF by Jimstex for [SAP Database – Unofficial SAP Knowledge Base](#)*