

## WORKFLOW (Part 1)

By Swarna.S , Tata Consultancy Services

**Workflow** is nothing but the path a process takes based on a certain set of procedural rules. They may be very simple as approvals or rejections or very complex as getting many levels of approvals based on conditions for the release of a purchase order where many departments are involved.

**Workflow Builder** is to create, display and change a workflow. Transaction code is SWDD.

A **Workflow instance** is nothing but a single run of the workflow.

**Tasks** are the steps performed in the process either by the software automatically or by the people.

A **Work item** is the task instance that is performed as a single workflow step.

**Work Flow Container** is the place where all the data used in the workflow is collected.

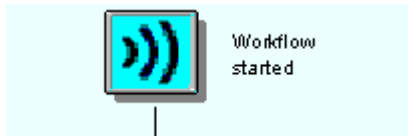
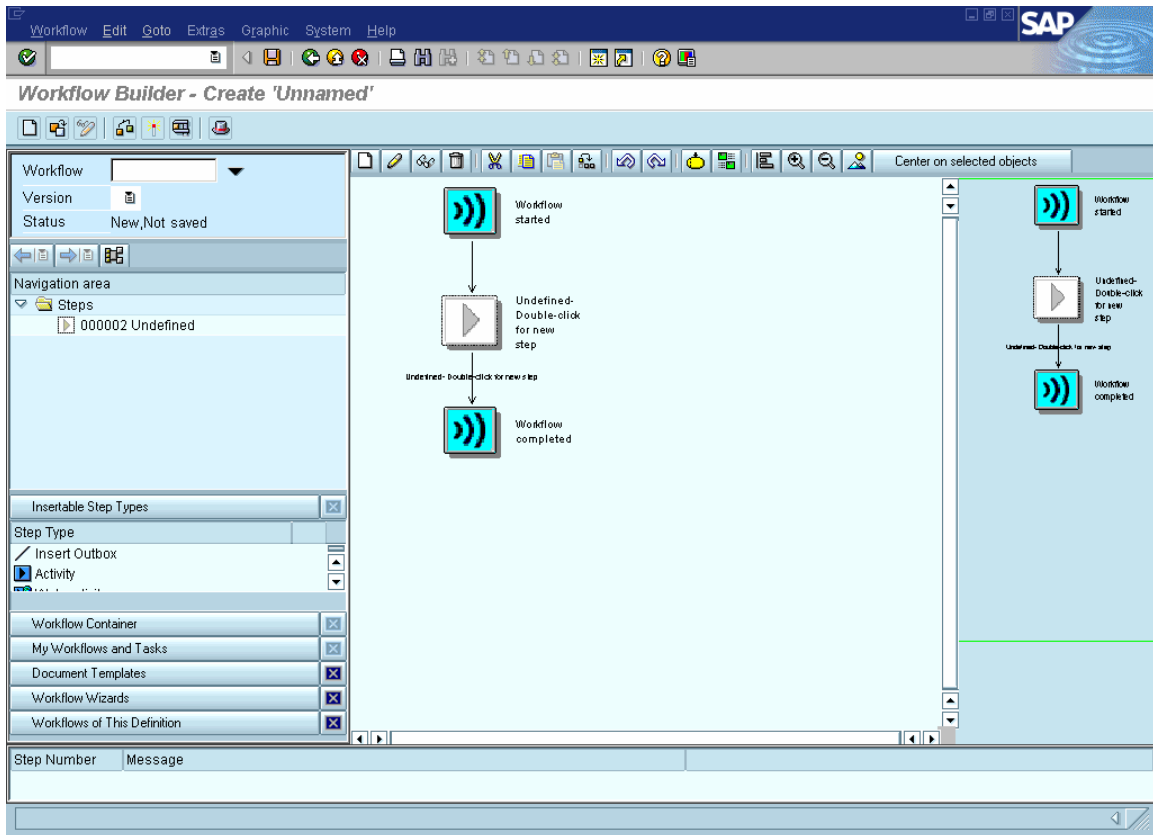
**Binding** is the set of rules that define which data is passed to which part of the process.

*Building a very simple workflow with user decision:*

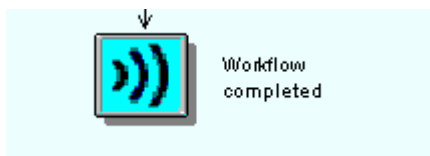
*Step 1.*

Go to the workflow builder.

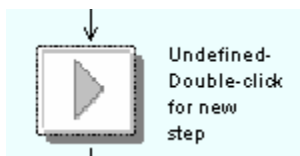
The transaction code is **SWDD**.



→ The start of the workflow definition



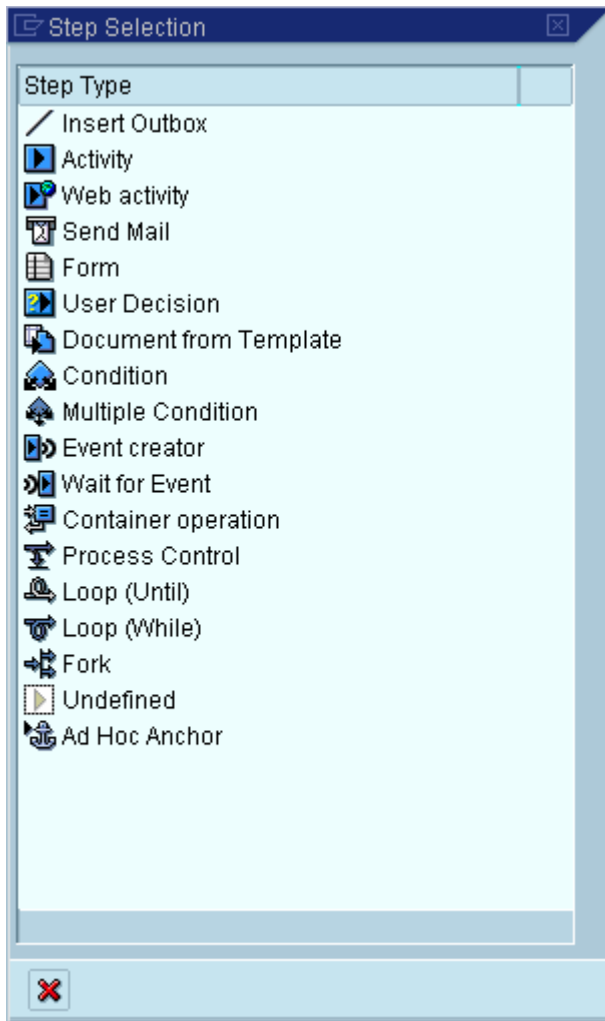
→ The completion of a workflow definition



→ Area to insert a new workflow definition

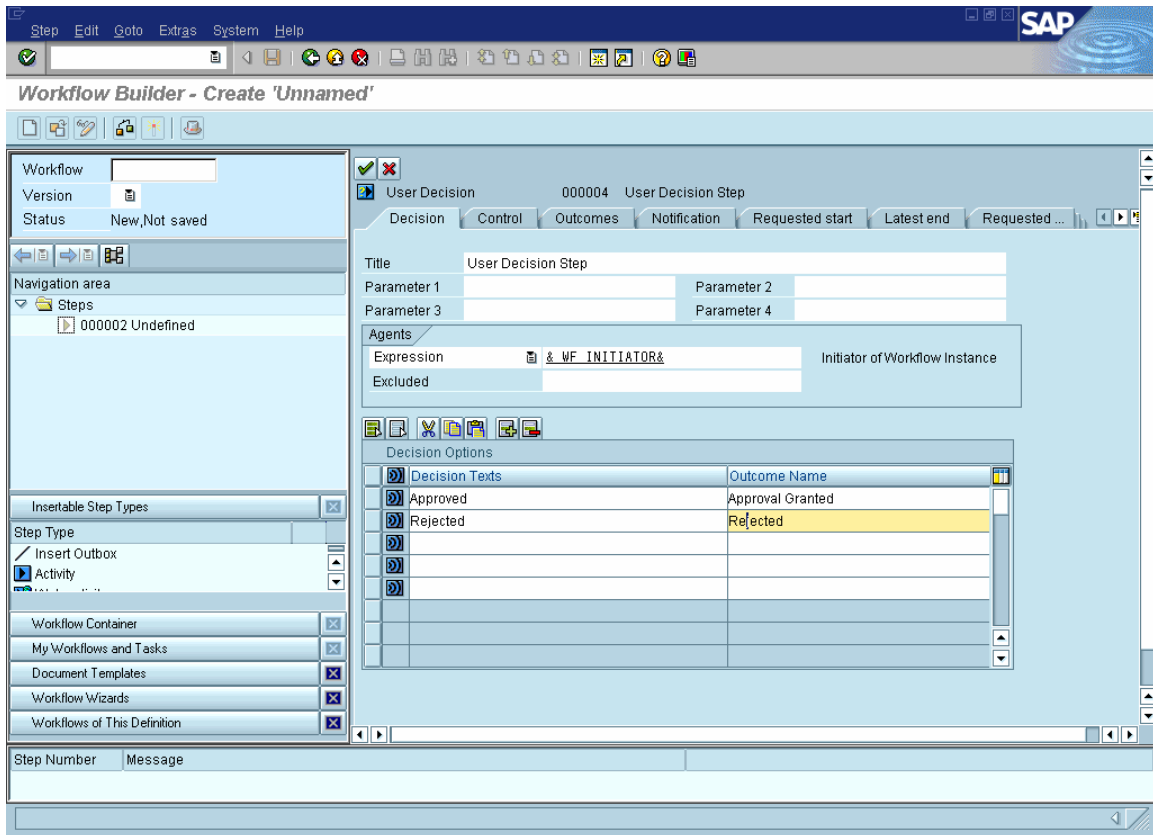
## Step 2

On double clicking the undefined icon as shown above a new POP UP appears.




### *Step 3*

Select the User Decision and we get the User decision window

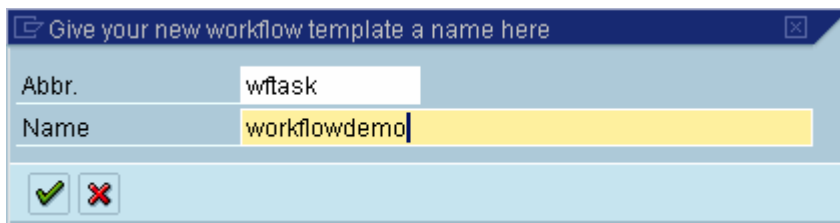


Let us suppose that the decision making is intended for the creator of this workflow. `&_WF_INITIATOR&` contains the value who executed the workflow. Since this is a test object, we are using `&_WF_INITIATOR&`. But we wouldn't be using this variable in real time scenarios.

Now select  **Transfer and to graphic** button.

#### Step 4

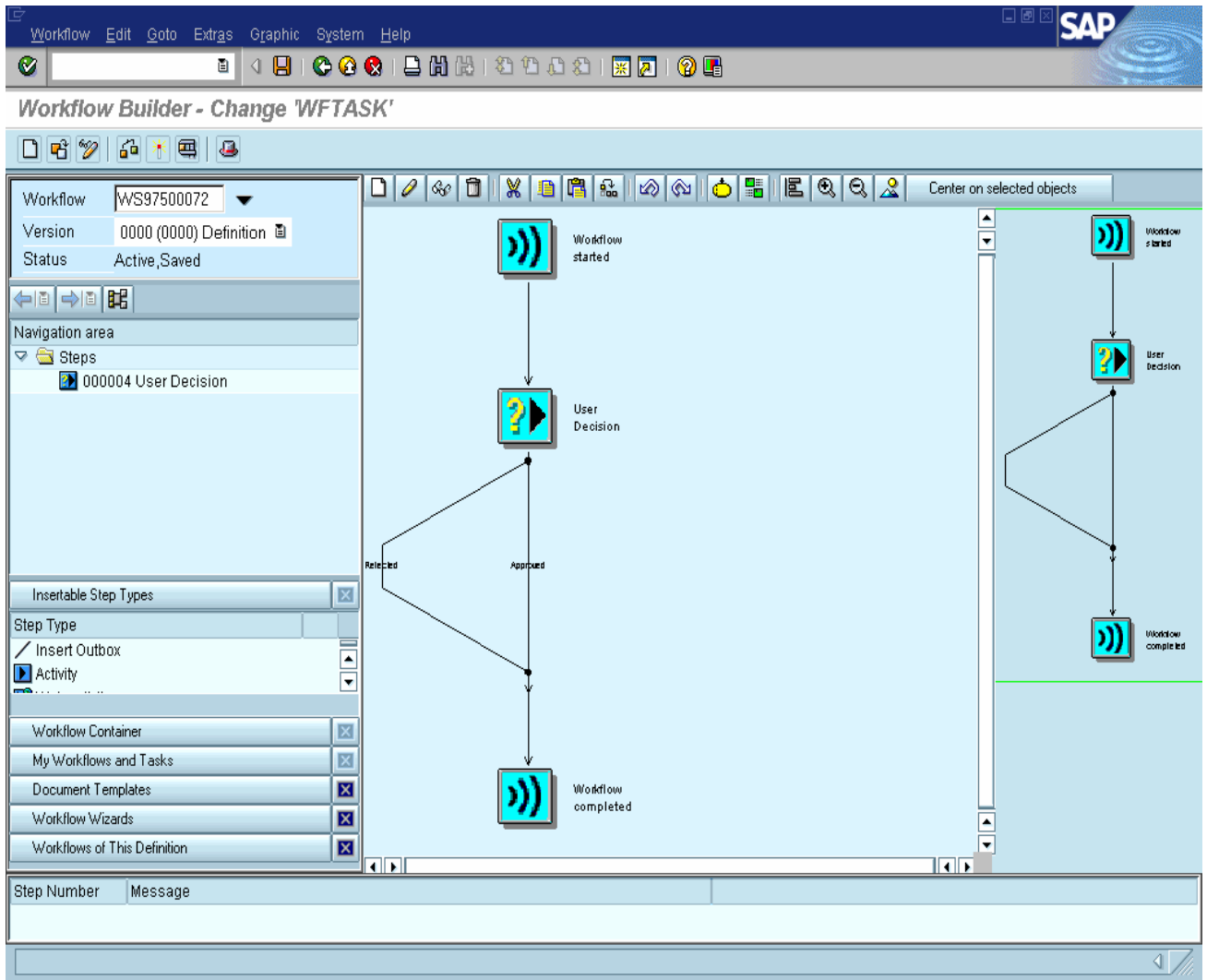
A pop up appears asking for the workflow name.



Now enter the package either an own package name or as a local object.

A number is assigned to the workflow starting with WS and number following it.

Now save your workflow. After saving, a number is assigned to your workflow starting with WS, as shown in the below screenshot.



**SAVE, CHECK AND ACTIVATE YOUR WORKFLOW.**