

Note: To complete this exercise, you need Microsoft Visual Basic 5.0 or Later.

Objectives

By the end of this Exercise, you will be familiar to:

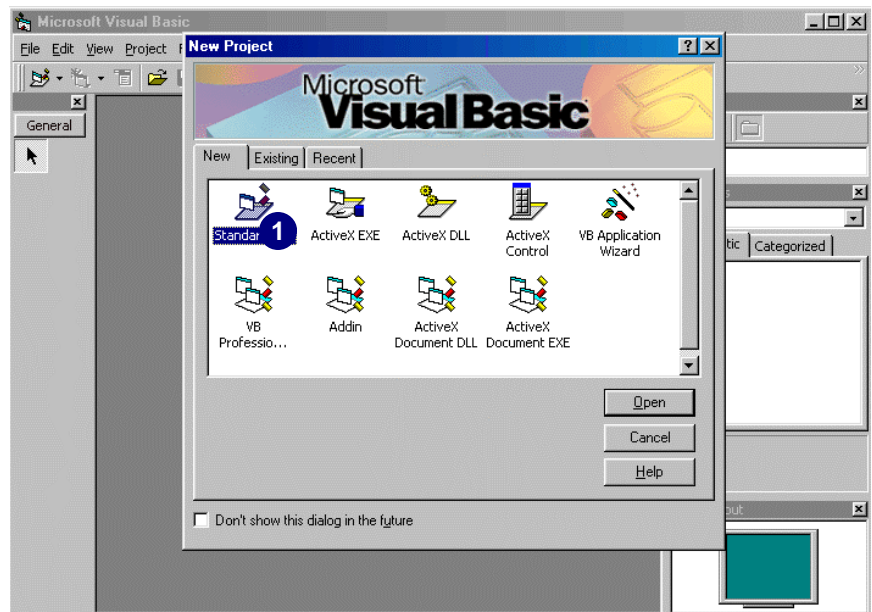
- Logon to SAP from VB.
- Use of BAPI.
- Creation of Sales Order Using BAPI.

Prerequisites

Before working on this exercise, you should be familiar with the following:

- Microsoft Visual Basic 5.0 or later
- Forms creation and Managing objects.

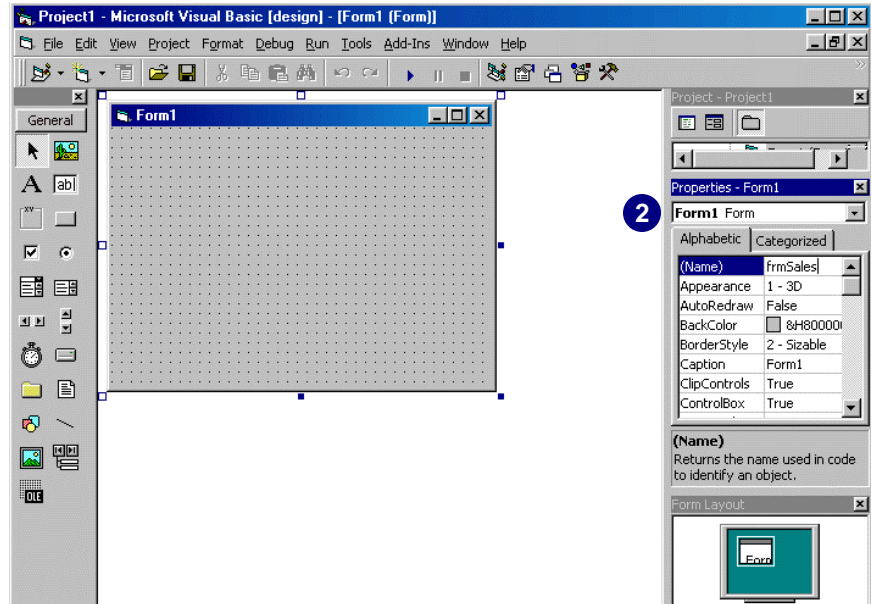
1. Start Visual Basic new project as Standard EXE (as shown in picture).



2. Select properties Window

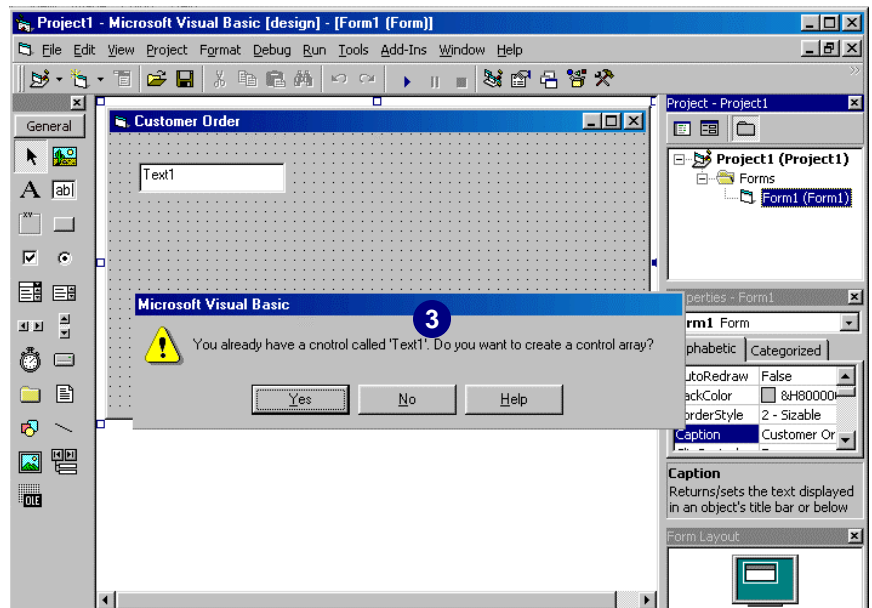
Type property values as shown below.

Property	Value
Name	frmCustomer
Caption	Customer Order
Height	4425
Width	8520



3. Add a Text Box to form.

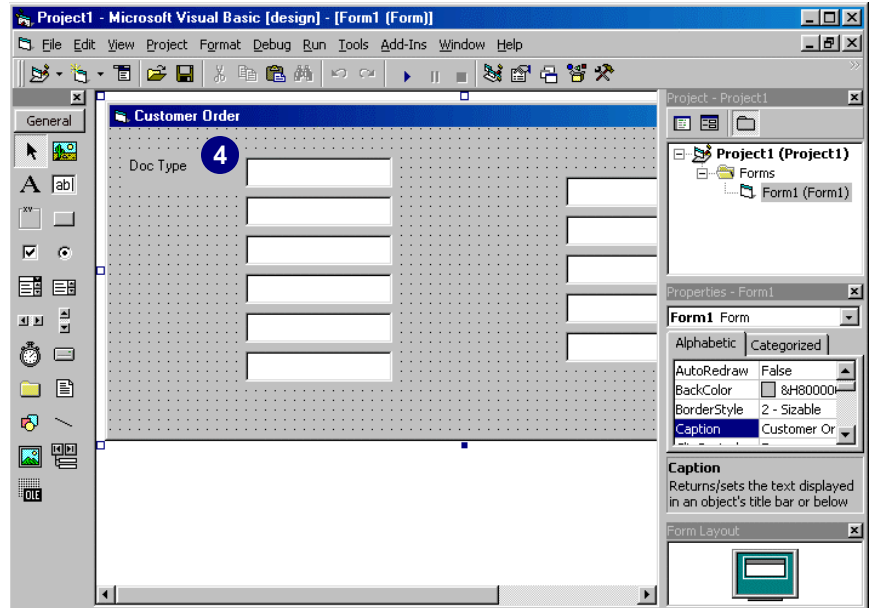
- Click on text box with right mouse button.
- Choose Copy.
- Click on form with right mouse button.
- Choose Paste.
- When it prompts Choose 'Yes' to create a control array. (As shown in Picture.)
- Create 10 more Text boxes by Pasting them.



- Place a label control before Text box.

Change its Caption to 'Doc. Type'

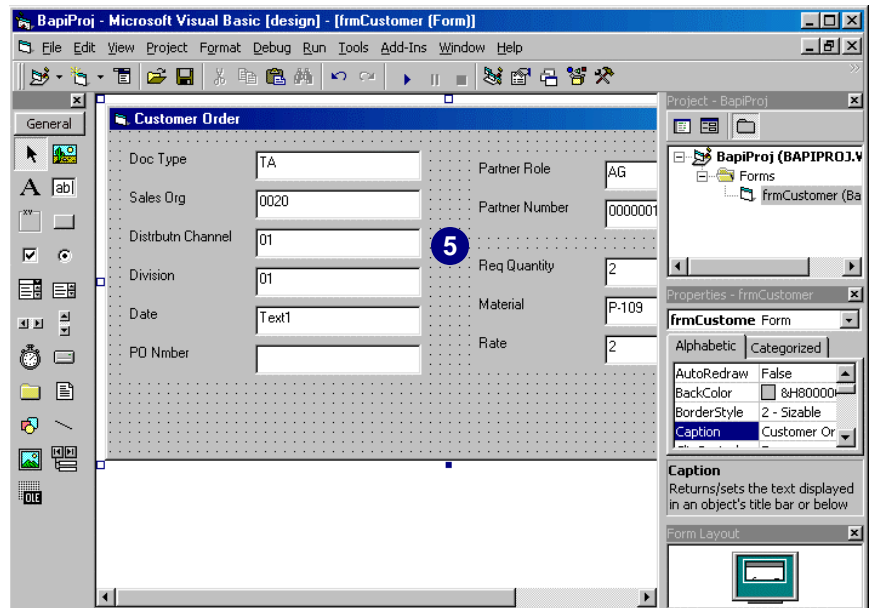
Repeat this step for all Text boxes.



- Change the captions for label controls as shown in picture.

Below are Captions for each lable.

- Doc Type
- Sales Org
- Distribution Channel
- Division
- Date
- PO Number
- Partner Role
- Partner Number
- Req. Quantity
- Material
- Rate



6. Create Command buttons as shown in Picture.

Change their Captions to

1. Create Order
2. Log Off

The screenshot shows a 'Customer Order' form with the following fields and values:

Doc Type	TA	Partner Role	AG
Sales Org	0020	Partner Number	0000001185
Distribtn Channel	01	Req Quantity	2
Division	01	Material	P-109
Date	02/24/1999	Rate	2
PO Number			

At the bottom, there are two buttons: 'Create Order' and 'Log Off'. A blue circle with the number '6' is positioned over the 'Create Order' button.

7. Copy following code to Form_Load () Event.

```

Private Sub Form_Load()
    Text1(4) = Format(Now, "mm/dd/yyyy")
    Set bapictrl = CreateObject("SAP.BAPI.1")
    Set oconnection = bapictrl.connection
    oconnection.logon

    Set boOrder = bapictrl.getSapobject("SalesOrder")
    Set oPartner = bapictrl.dimas(boOrder, "CreateFromData", "orderpartners")
    Set oItemIn = bapictrl.dimas(boOrder, "CreateFromData", "orderitemsin")
    Set oheader = bapictrl.dimas(boOrder, "CreateFromData", "orderheaderin")
End Sub
    
```

The screenshot shows the Visual Basic IDE with the code editor open to the Form_Load event. The code is highlighted in blue, and a blue circle with the number '7' is placed over the first line of code.

```

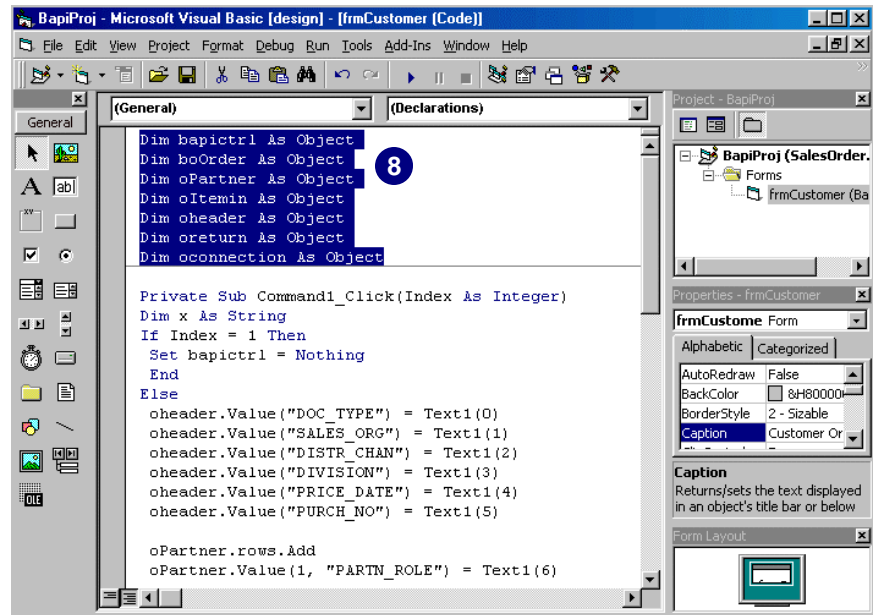
Text1(4) = Format(Now, "mm/dd/yyyy")
Set bapictrl = CreateObject("SAP.BAPI.1")
Set oconnection = bapictrl.connection
oconnection.logon
    
```

```

Set boOrder = bapictrl.getSapobject("SalesOrder")
Set oPartner = bapictrl.dimas(boOrder, "CreateFromData", "orderpartners")
Set oItemIn = bapictrl.dimas(boOrder, "CreateFromData", "orderitemsin")
Set oheader = bapictrl.dimas(boOrder, "CreateFromData", "orderheaderin")
    
```

8. Copy following code to General Declarations Section of the form.

```
Dim bapictrl As Object
Dim boOrder As Object
Dim oPartner As Object
Dim oItemin As Object
Dim oheader As Object
Dim oreturn As Object
Dim oconnection As Object
```



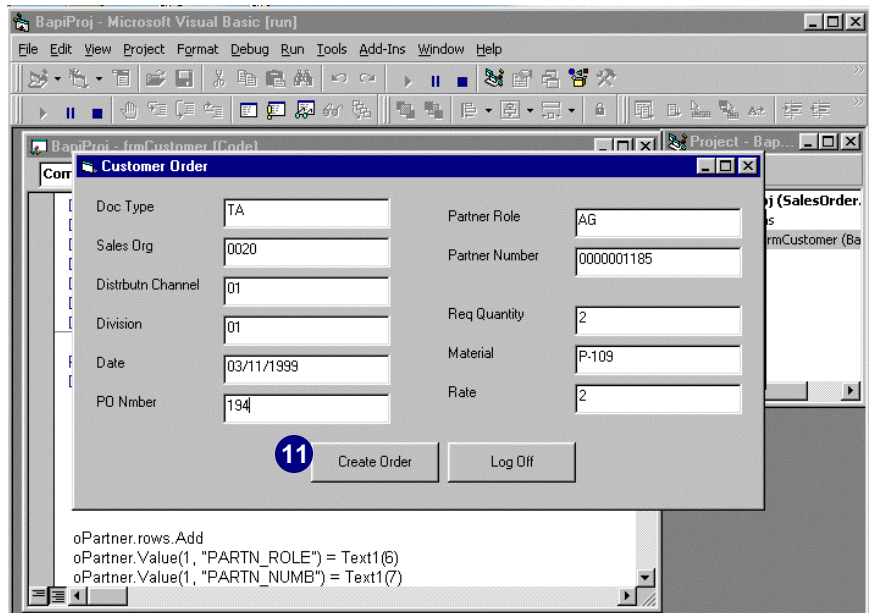
6. Copy the following code to Click event of the Command Button.

```
Dim x As String
oheader.Value("DOC_TYPE") = Text1(0)
oheader.Value("SALES_ORG") = Text1(1)
oheader.Value("DISTR_CHAN") = Text1(2)
oheader.Value("DIVISION") = Text1(3)
oheader.Value("PRICE_DATE") = Text1(4)
oheader.Value("PURCH_NO") = Text1(5)

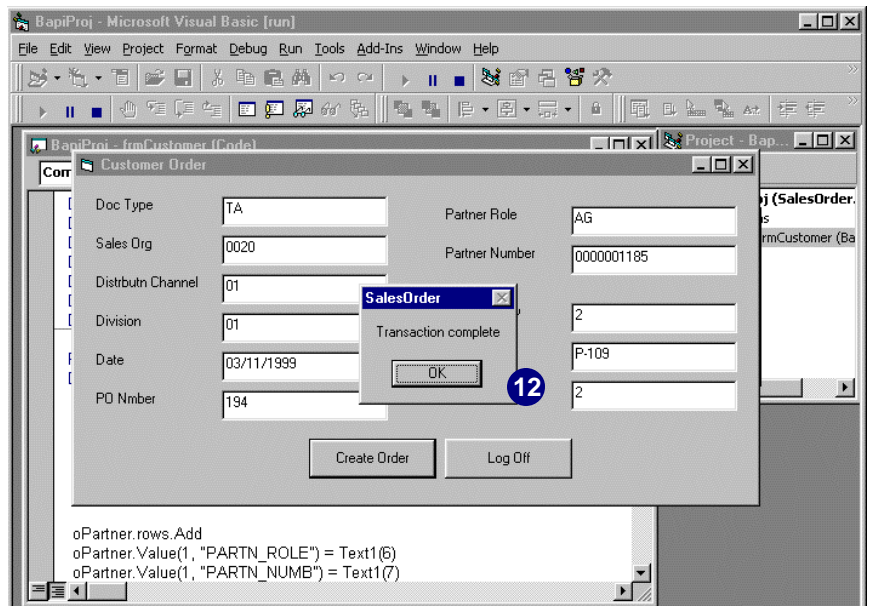
oPartner.rows.Add
oPartner.Value(1, "PARTN_ROLE") = Text1(6)
oPartner.Value(1, "PARTN_NUMB") = Text1(7)

oItemin.rows.Add
oItemin.Value(1, "REQ_QTY") = Text1(8)
oItemin.Value(1, "MATERIAL") = Text1(9)
oItemin.Value(1, "COND_VALUE") = Text1(10)
boOrder.createfromdata orderheaderin:=oheader, orderitemsin:=oItemin,
orderpartners:=oPartner, return:=oreturn
x = oreturn.Value("message")
If x = "" Then
    MsgBox "Transaction complete"
Else
    MsgBox x
End If
```


11. Provide details for relevant fields then click on Create Order Command Button.



12. When you see the message 'Transaction Complete'

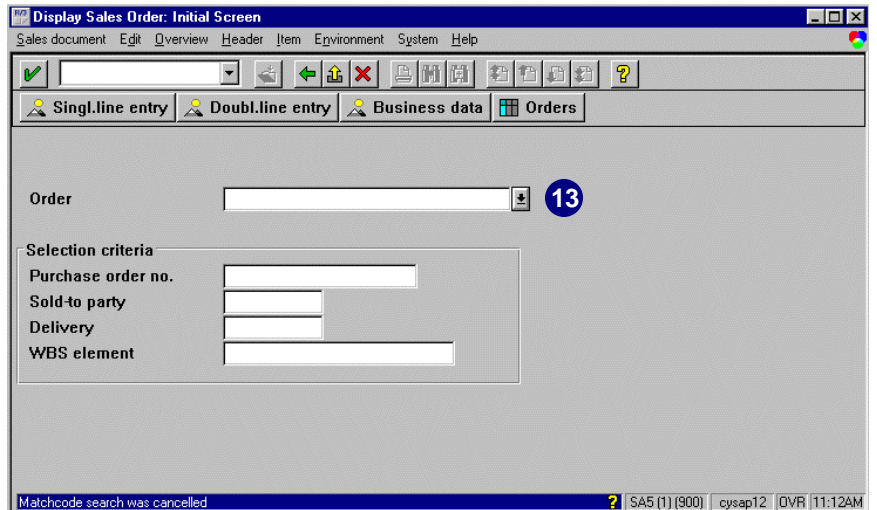


Checking your Order:

To access the 'Display Sales Order: Initial Screen' choose path:

Logistics **®** Sales/Distribution **®** Sales **®** Order **®** Display

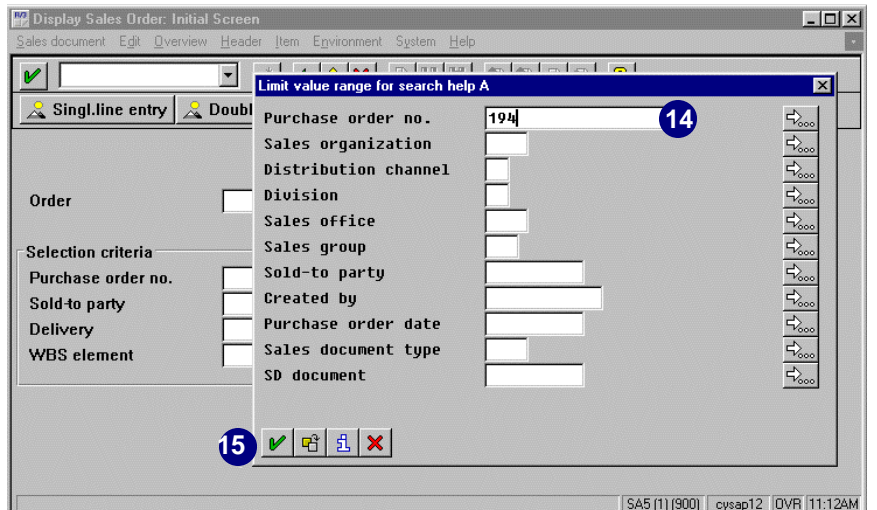
13. Click on Order.



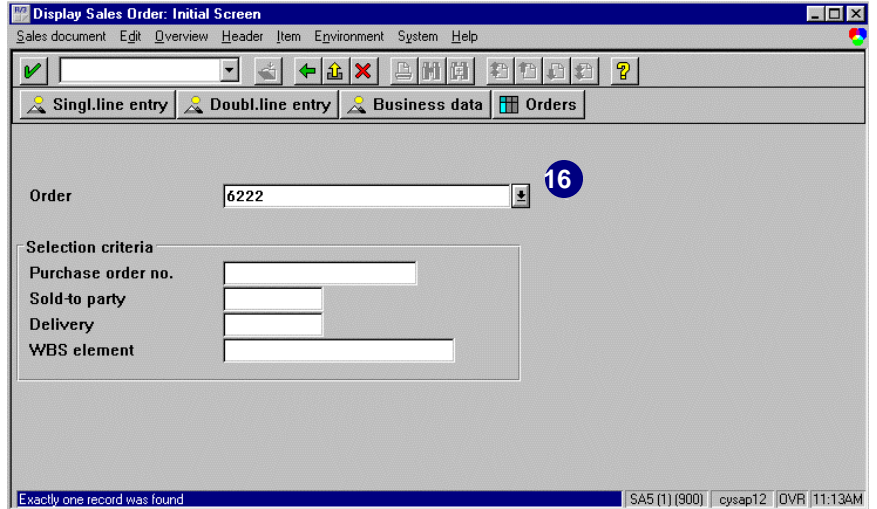
14. You will be displayed Search screen.

Enter the Purchase order no which you have entered earlier (194 in this case)

15. Hit enter or click on Choose Enter button.



16. Order no will be displayed as shown
Hit enter.



17. Standard Order Overview Screen will be displayed with relevant details.

