

```
C:\WINDOWS\System32\cmd.exe

C:\usr\sap\put>cd dump\47upg\kernel\nt\i386\prepare.exe
The system cannot find the path specified.

C:\usr\sap\put>cd dump\47upg\kernel\nt\i386
The system cannot find the path specified.

C:\usr\sap\put>cd dump\47upg\kernel
The system cannot find the path specified.

C:\usr\sap\put> c:\dump\47upg\kernel\nt\i386\prepare.exe
The system cannot find the path specified.

C:\usr\sap\put> c:\dump\47upg\kernel\nt\i386\prepare.exe

Enter your UPGRADE DIRECTORY [C:\usr\sap\put]:
UPGRADE DIRECTORY =

Installing upgrade software ....
Enter CD DRIVE of KERNEL CD [D:]:
CD DRIVE = C:\dump\47upg\kernel

Executing C:\dump\47upg\kernel\NT\I386\NTPATCH\R3DLLCON.EXE
C:\usr\sap\put>_

R3up message

R3up> The mounted CD Set is for database ORACLE only.
Does your system run on DB ORACLE?

- "Yes"
- "No"

Enter one of these options [Yes] :=

Archive C:\dump\47upg\kernel\DATA\GDNT.SAR successfully unpacked to C:\usr\sap\put.

Extracting archive "C:\dump\47upg\kernel\DATA\HTDOC.SAR" to "C:\usr\sap\put" ...

Archive C:\dump\47upg\kernel\DATA\HTDOC.SAR successfully unpacked to C:\usr\sap\put.

You can now exit R3up and start R3up via the Upgrade Assistant.
Please read the Upgrade guide for more information.
If you choose operation mode SERVER then you need to use the
Upgrade Assistant menu 'Connect UaServer to R3up' to connect
to R3up.

Select operation mode:

- "EXIT"
- "SERVER"
- "SCROLL"

Enter one of these options [EXIT] :=
```

```
C:\WINDOWS\System32\cmd.exe
The system cannot find the path specified.

C:\Documents and Settings\T11ADM>sapcar -xvf tp.car
SAPCAR: error opening tp.car
SAPCAR: 0 file(s) extracted

C:\Documents and Settings\T11ADM>cd\
C:\>cd e
C:\e>sapcar -xvf tp.car
processing archive TP.CAR...
x tp.exe

C:\e>sapcar -xvf r3trans.car
processing archive R3TRANS.CAR...
x R3trans.exe

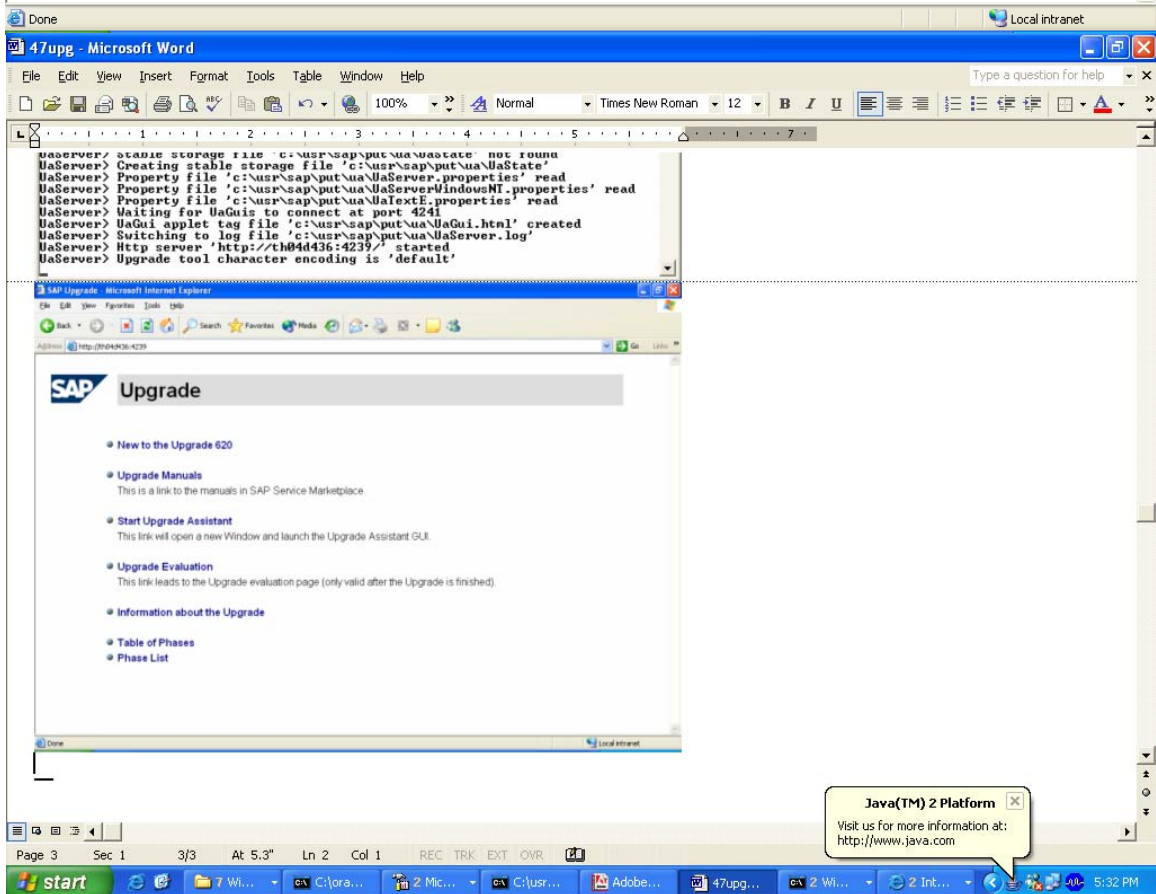
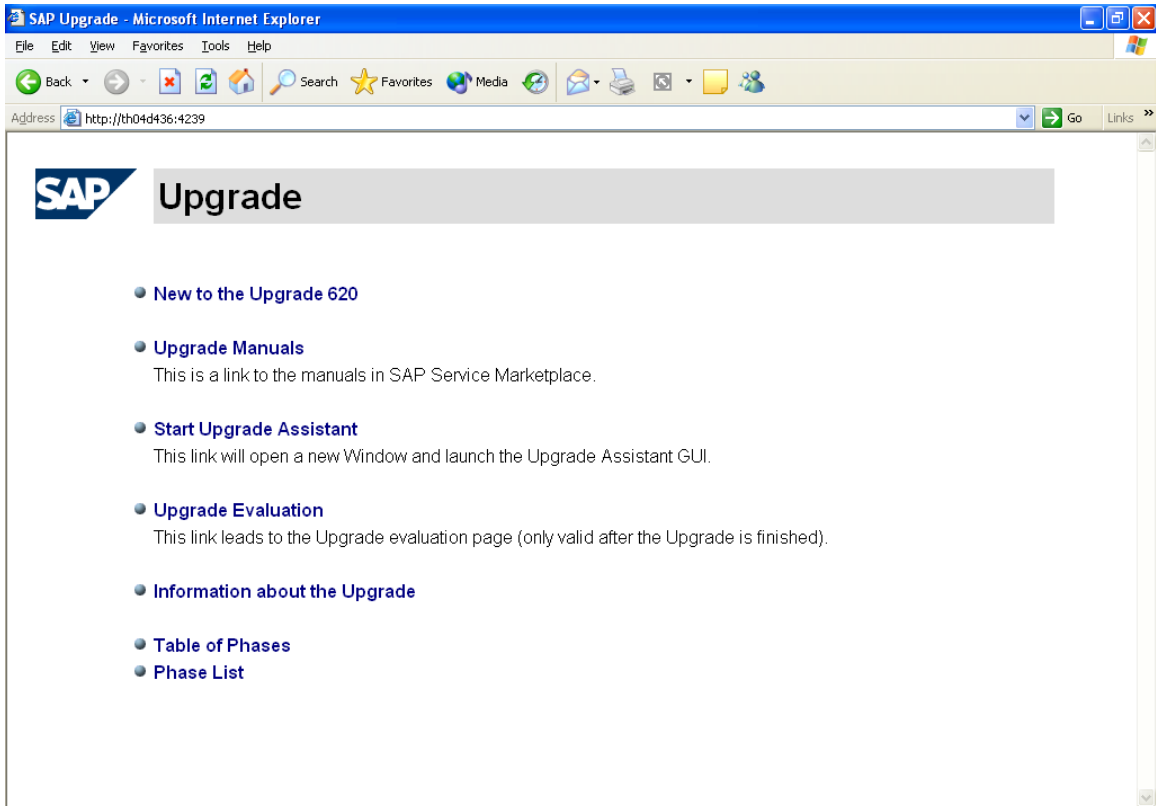
C:\e>clrsr
'clrsr' is not recognized as an internal or external command,
operable program or batch file.

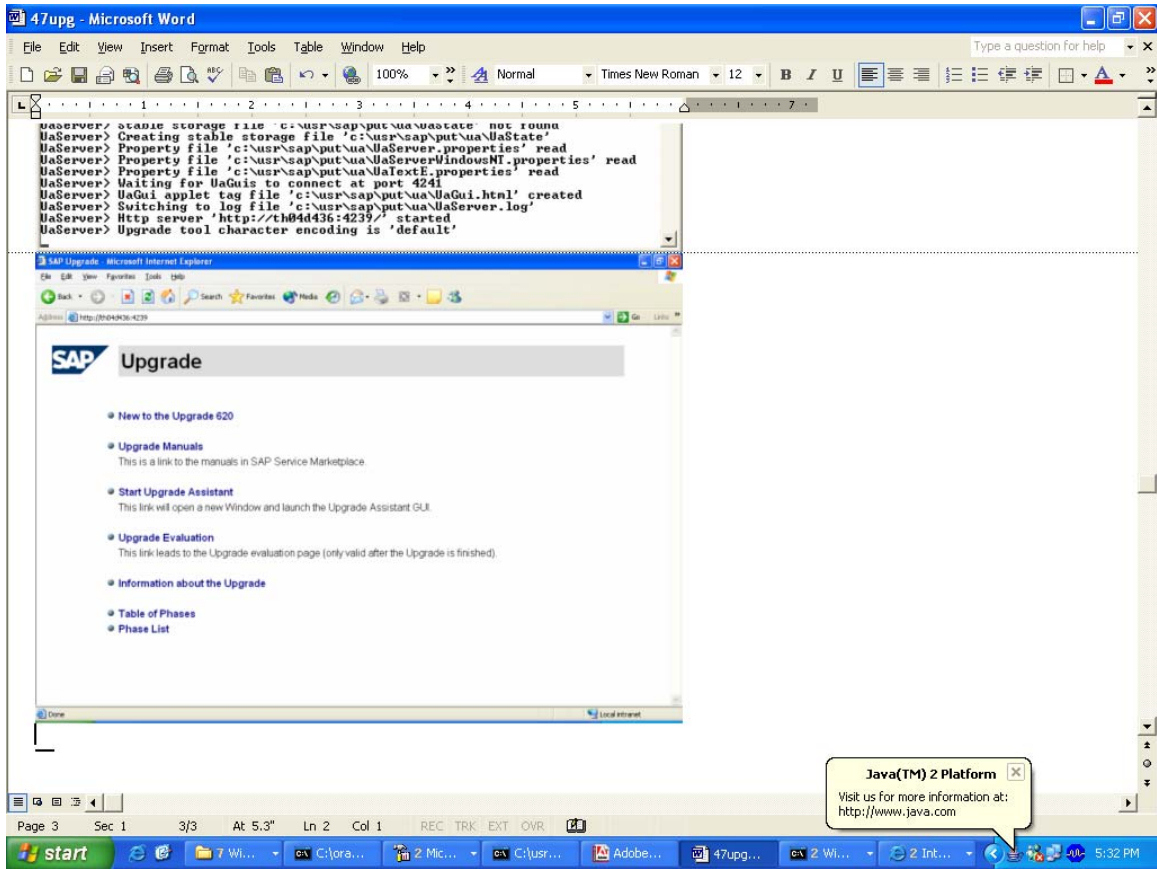
C:\e>cd\
C:\>jview /cp c:\usr\sap\put\UA\ua.jar UaServer_


C:\WINDOWS\System32\cmd.exe - jview /cp c:\usr\sap\put\UA\ua.jar UaServer
processing archive R3TRANS.CAR...
x R3trans.exe




C:\e>clrsr
'clrsr' is not recognized as an internal or external command,
operable program or batch file.

C:\e>cd\
C:\>jview /cp c:\usr\sap\put\UA\ua.jar UaServer
UaServer> Upgrade Assistant Server (Version 2.0.1)
UaServer> Running on host th04d436 (10.35.6.102)
UaServer> Temporary directory is 'c:\usr\sap\put\ua'
UaServer> Upgrade directory is 'c:\usr\sap\put'
UaServer> Stable storage file 'c:\usr\sap\put\ua\UaState' not found
UaServer> Creating stable storage file 'c:\usr\sap\put\ua\UaState'
UaServer> Property file 'c:\usr\sap\put\ua\UaServer.properties' read
UaServer> Property file 'c:\usr\sap\put\ua\UaServerWindowsNI.properties' read
UaServer> Property file 'c:\usr\sap\put\ua\UaTextE.properties' read
UaServer> Waiting for UaGuis to connect at port 4241
UaServer> UaGui applet tag file 'c:\usr\sap\put\ua\UaGui.html' created
UaServer> Switching to log file 'c:\usr\sap\put\ua\UaServer.log'
UaServer> Http server 'http://th04d436:4239/' started
UaServer> Upgrade tool character encoding is 'default'
```





 Upgrade Assistant



File

Upgrade Assistant

User name

administrator

Phone number

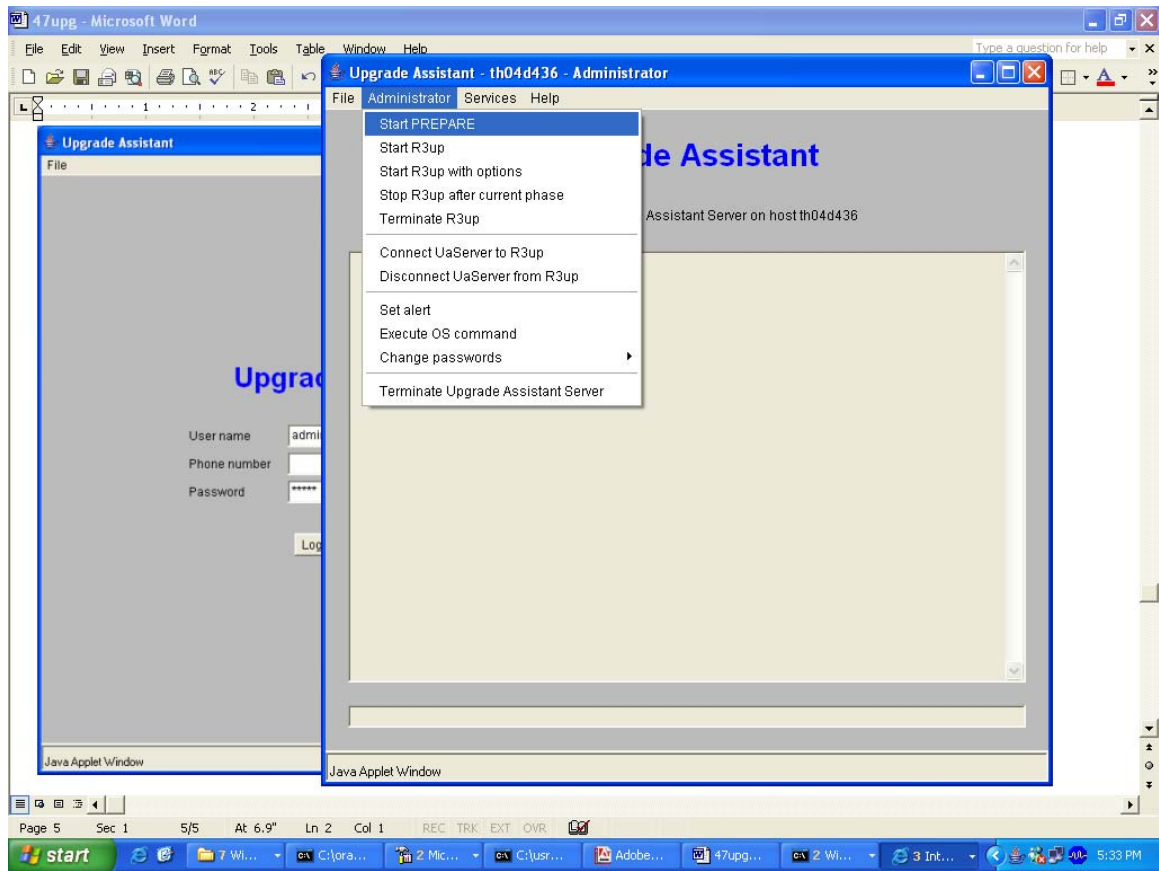
Password

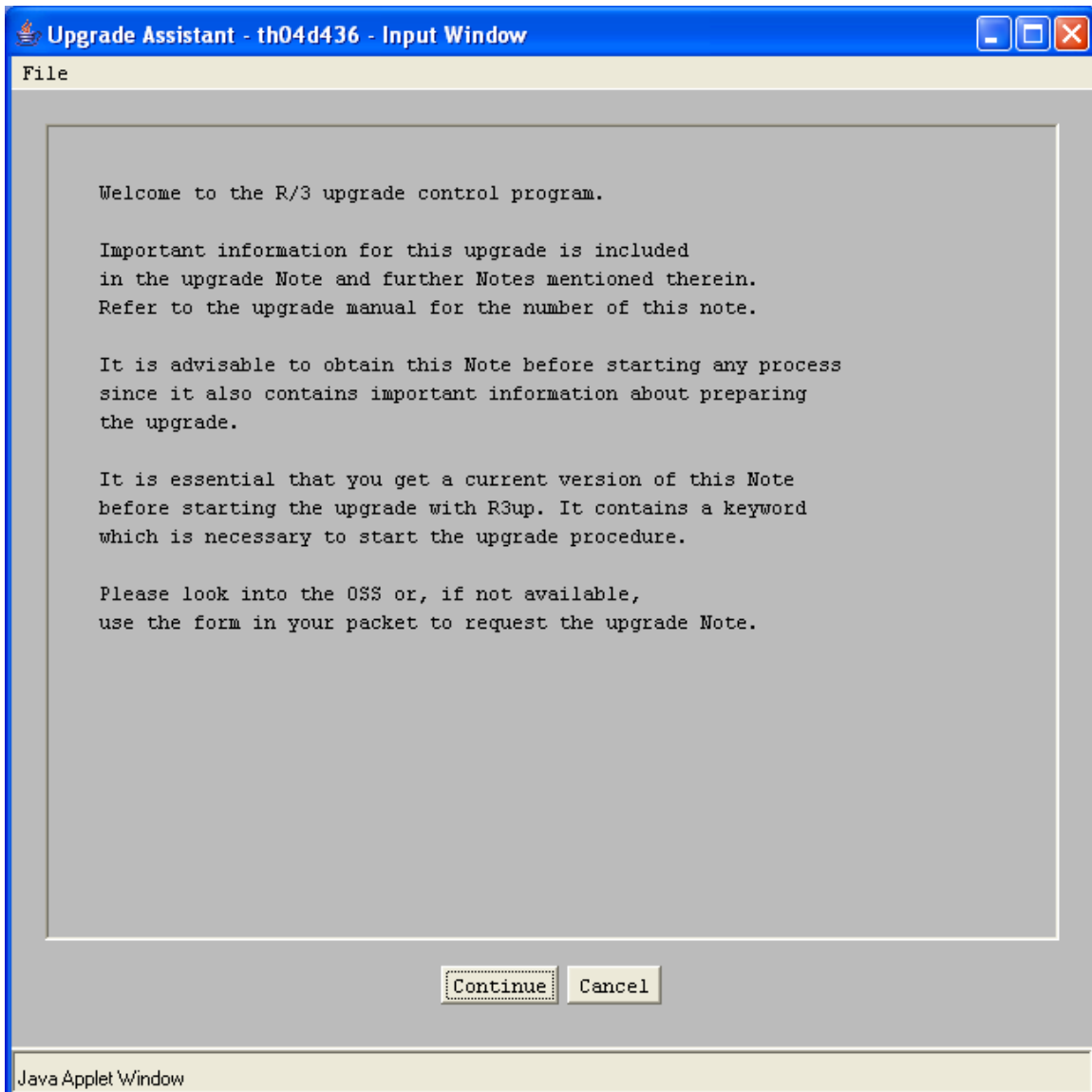
Login

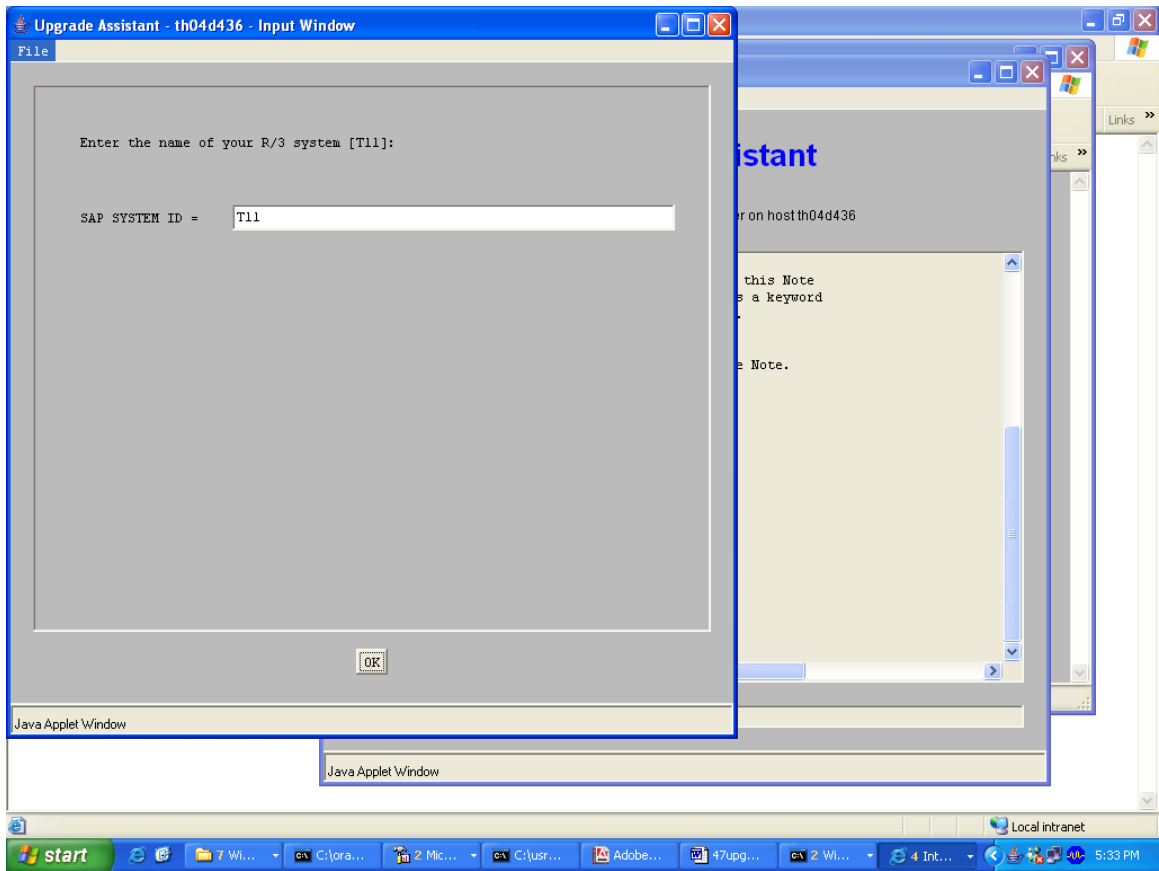
Clear

Exit

Java Applet Window







Upgrade Assistant - th04d436 - Input Window

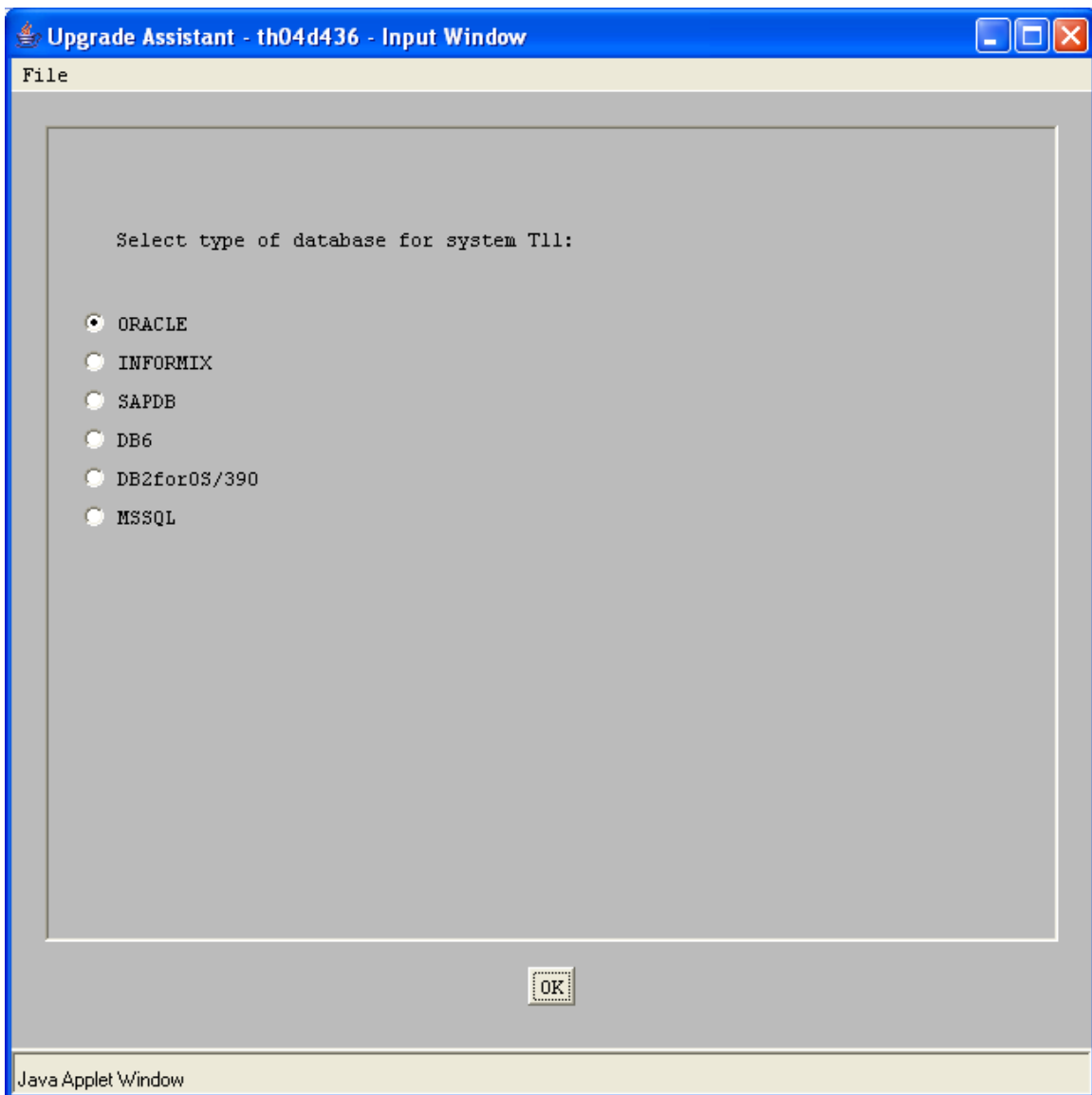
File

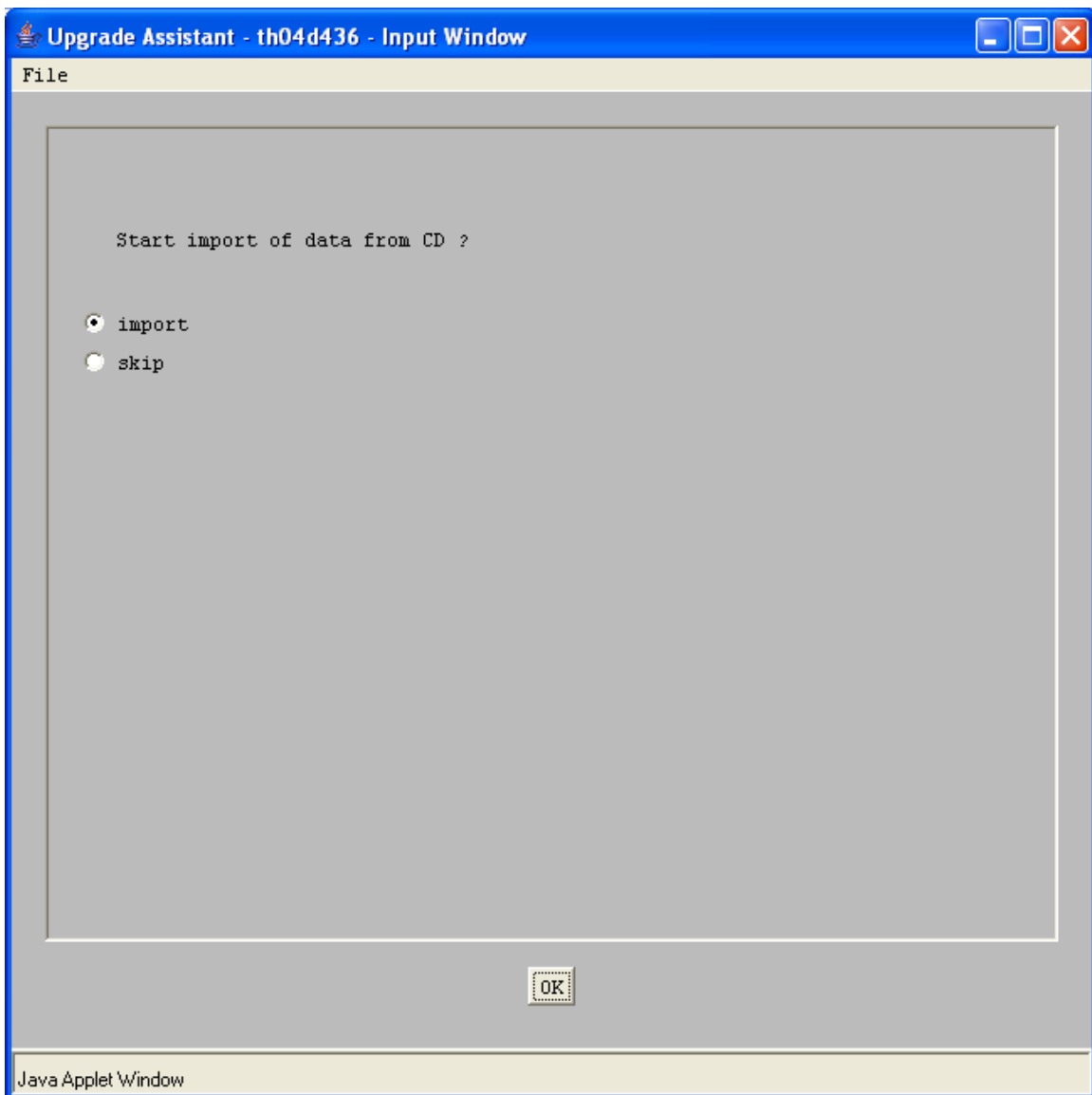
Enter the R/3 instance number [00]:

INSTANCE NUMBER =

OK

Java Applet Window





Upgrade Assistant - th04d436 - Input Window

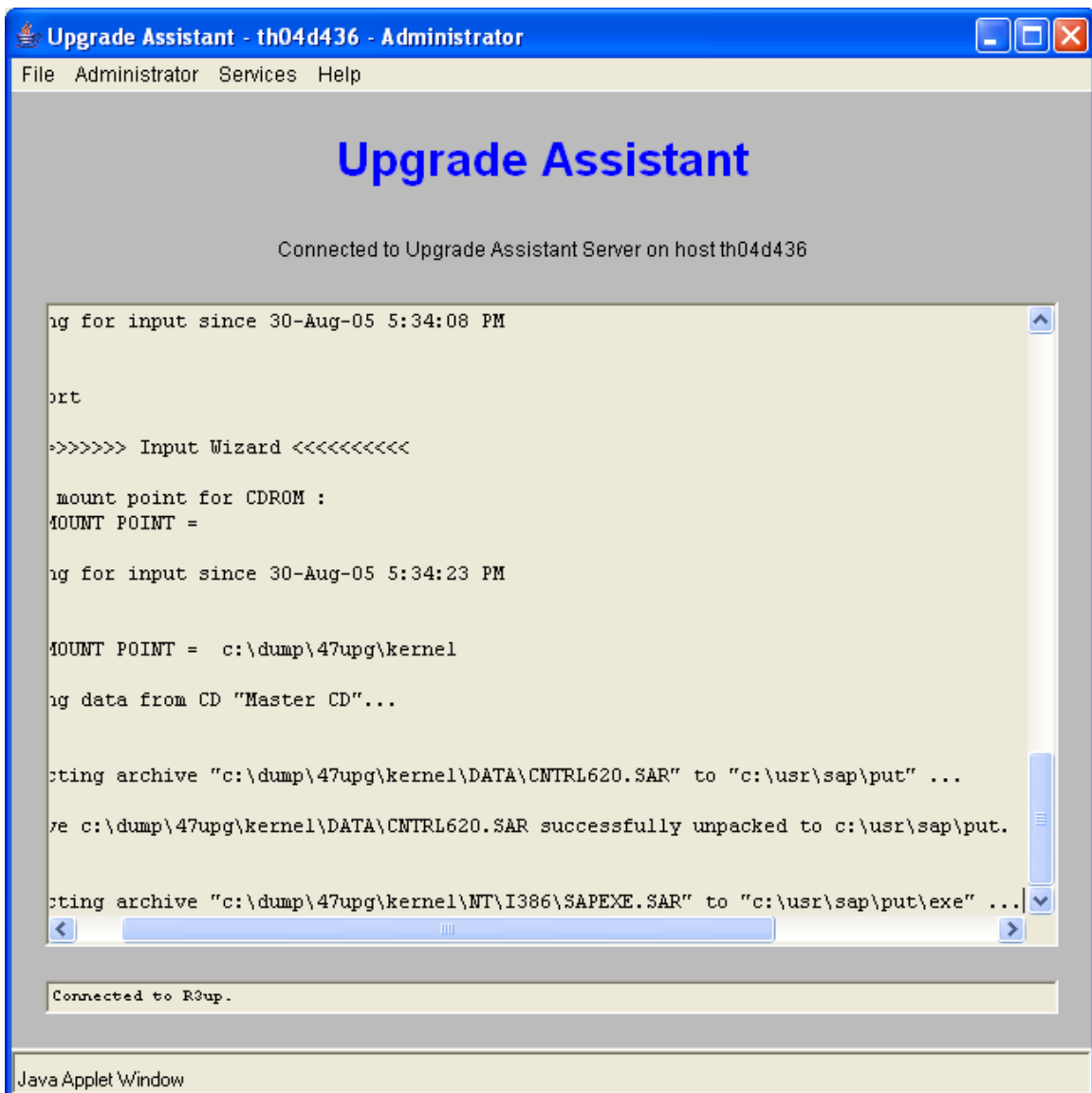
File

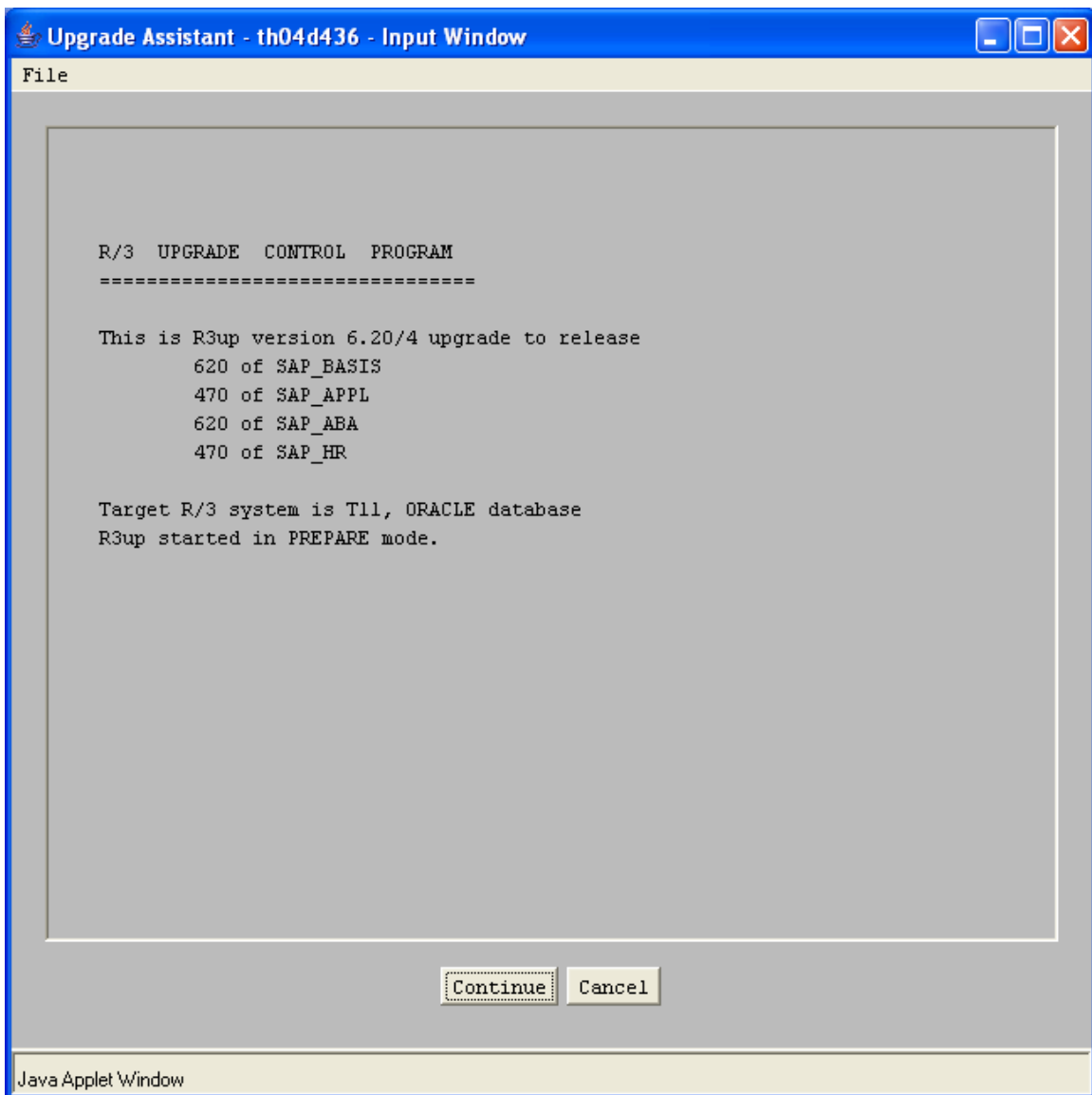
Enter mount point for CDROM :

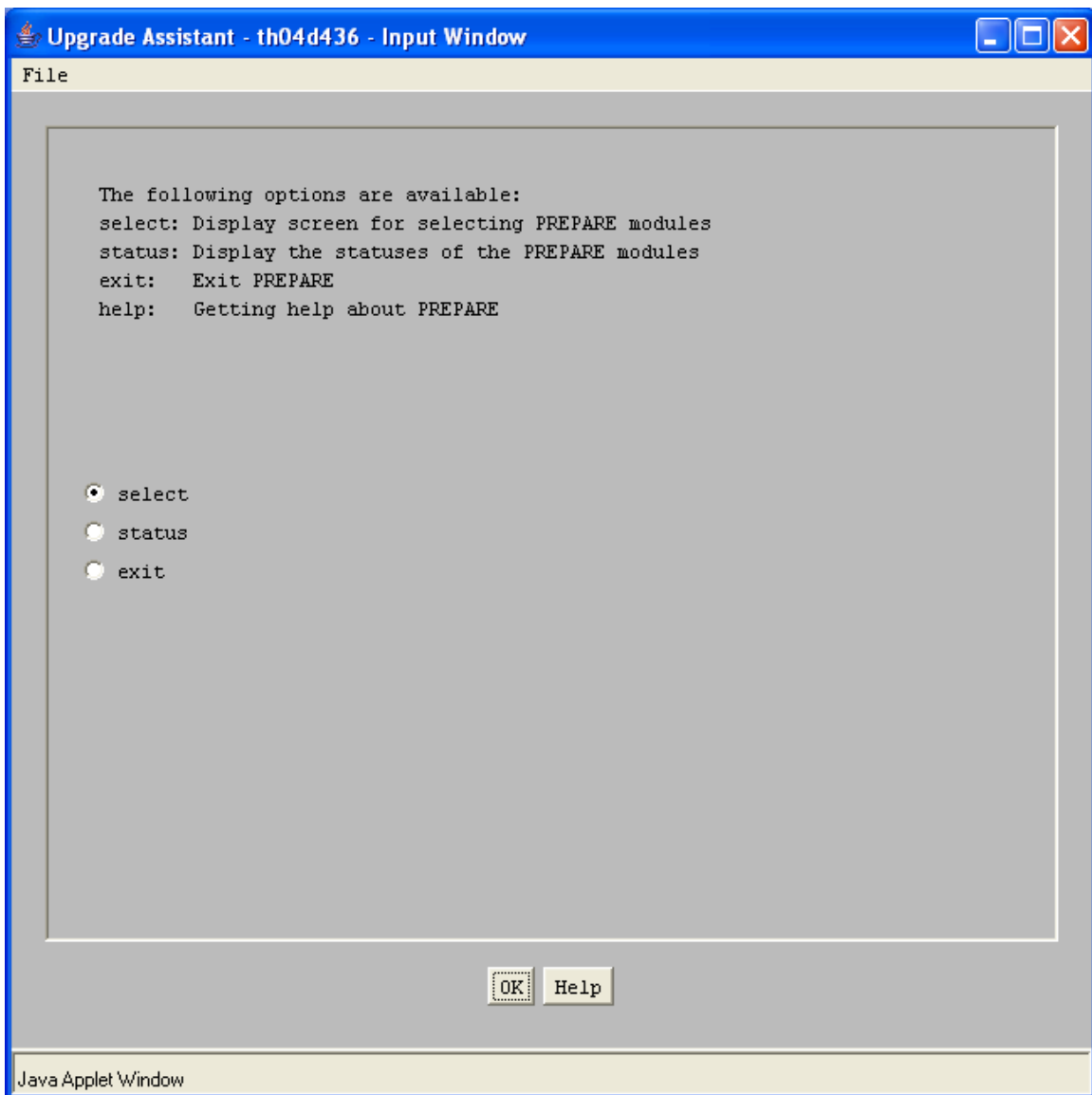
CD MOUNT POINT =

OK

Java Applet Window







Upgrade Assistant - th04d436 - Input Window

File

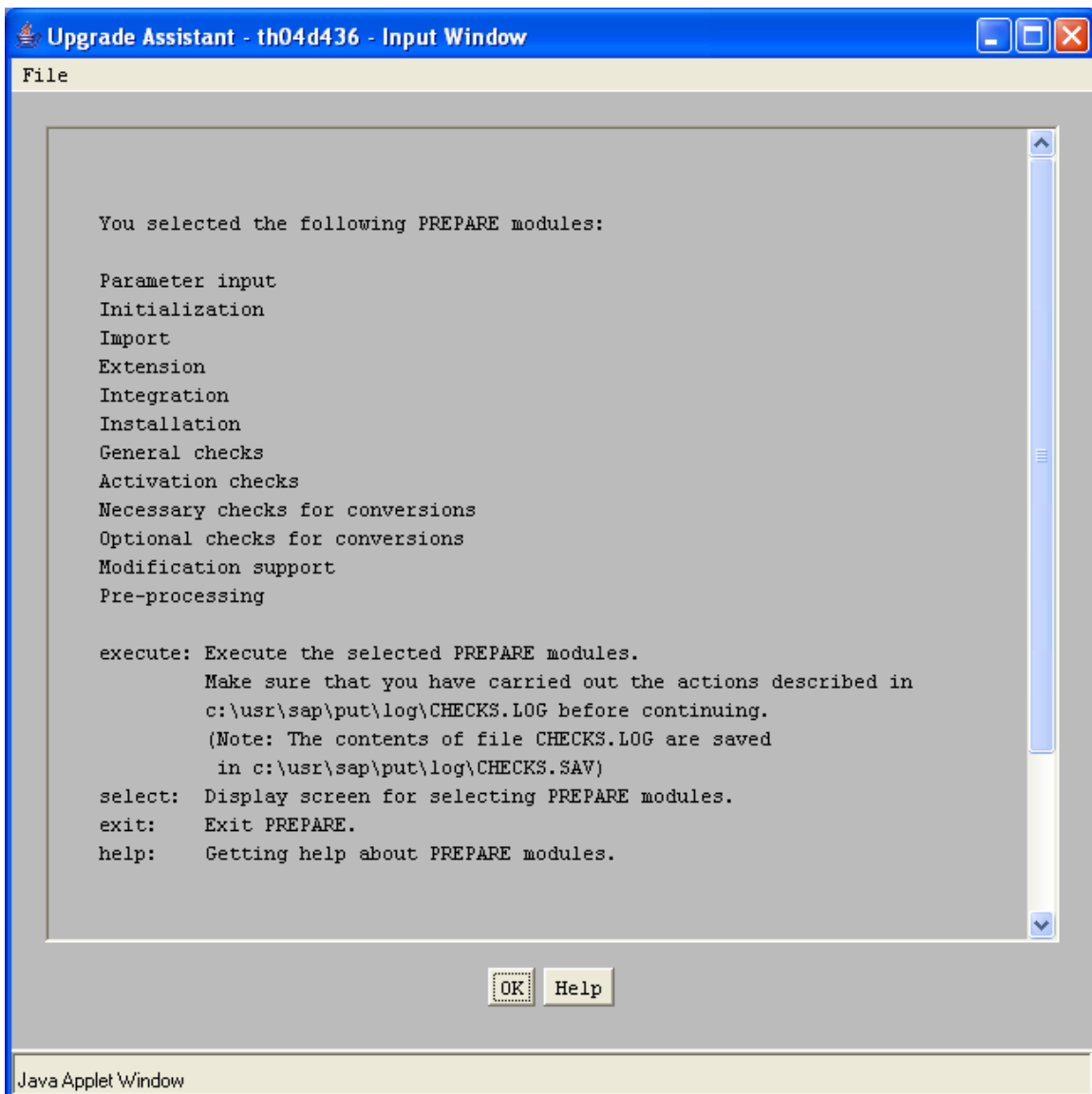
Select the PREPARE modules

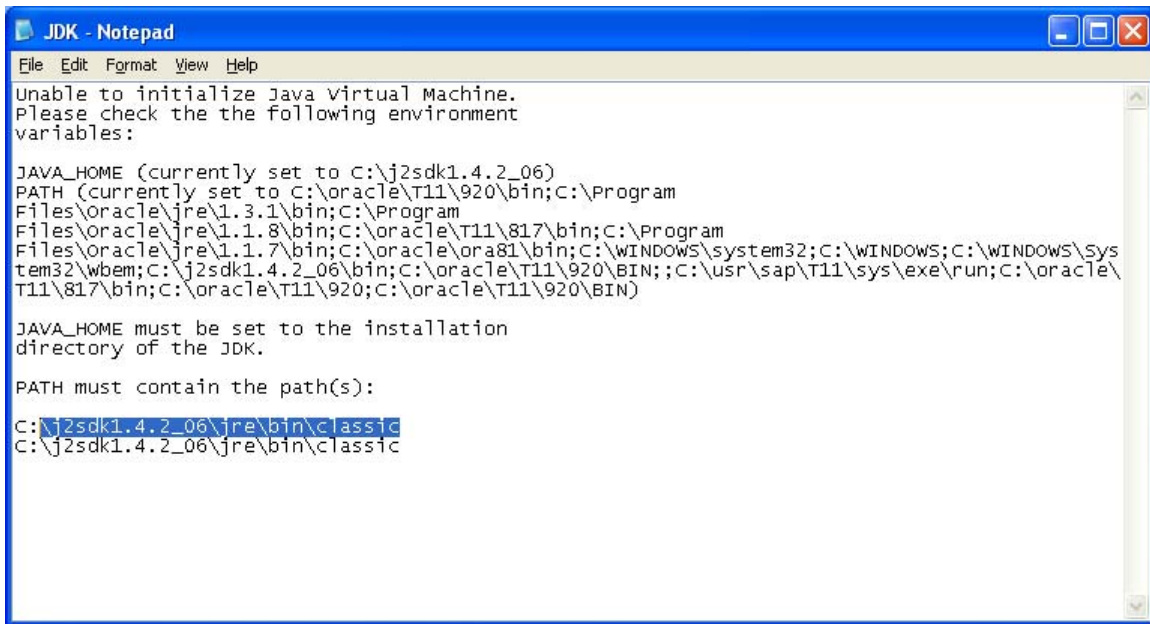
	name	status	mandatory
<input checked="" type="checkbox"/>	Parameter input	initial	yes
<input checked="" type="checkbox"/>	Initialization	initial	yes
<input checked="" type="checkbox"/>	Import	initial	yes
<input checked="" type="checkbox"/>	Extension	initial	yes
<input checked="" type="checkbox"/>	Integration	initial	yes
<input checked="" type="checkbox"/>	Installation	initial	yes
<input checked="" type="checkbox"/>	General checks	initial	yes
<input checked="" type="checkbox"/>	Activation checks	initial	yes
<input checked="" type="checkbox"/>	Necessary checks for conversions	initial	yes
<input checked="" type="checkbox"/>	Optional checks for conversions	initial	no
<input checked="" type="checkbox"/>	Modification support	initial	no
<input checked="" type="checkbox"/>	Pre-processing	initial	no

OK

Help

Java Applet Window



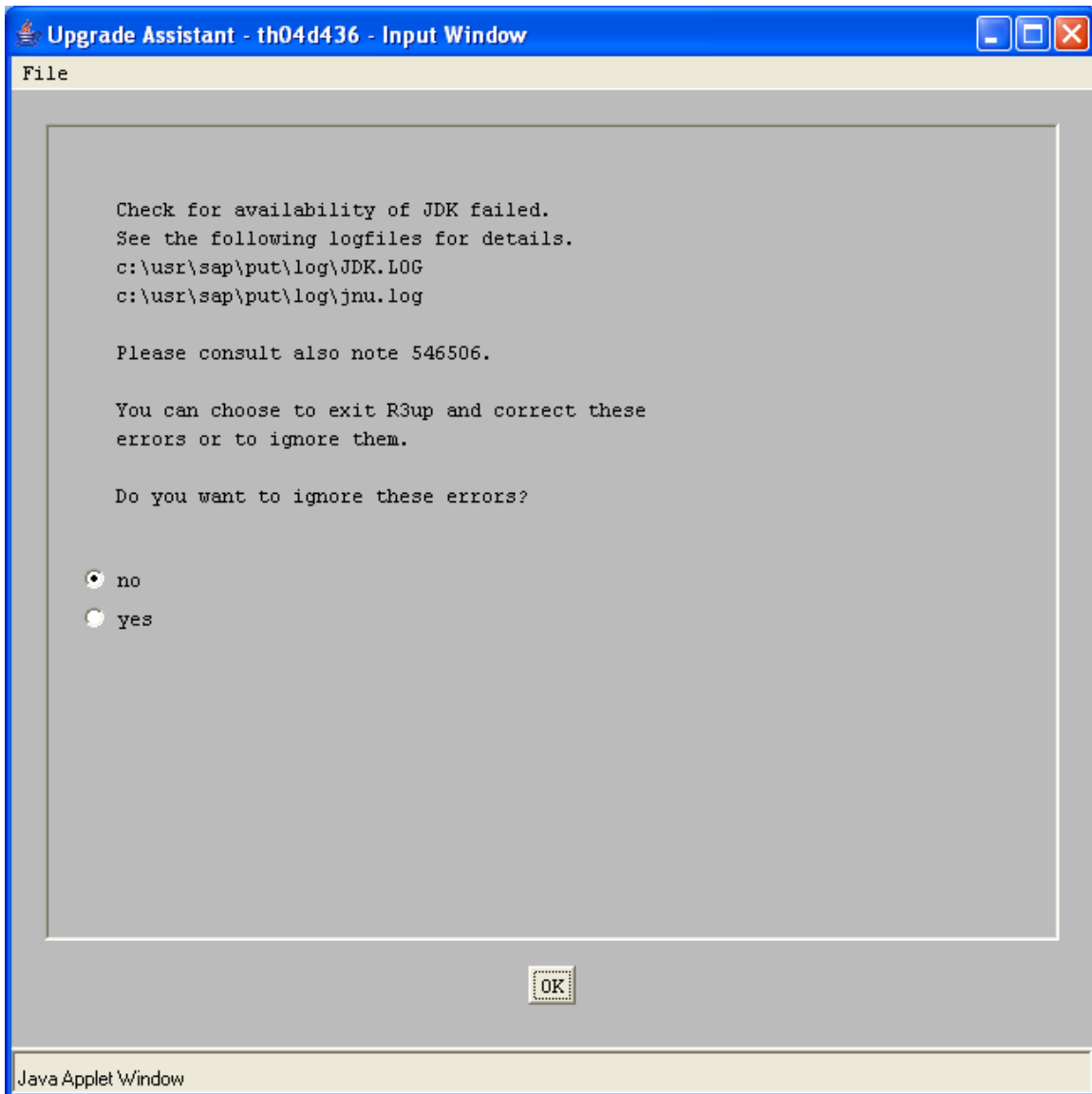


```
JDK - Notepad
File Edit Format View Help
Unable to initialize Java Virtual Machine.
Please check the the following environment
variables:

JAVA_HOME (currently set to C:\j2sdk1.4.2_06)
PATH (currently set to C:\oracle\T11\920\bin;c:\Program
Files\oracle\jre\1.3.1\bin;c:\Program
Files\oracle\jre\1.1.8\bin;c:\oracle\T11\817\bin;c:\Program
Files\oracle\jre\1.1.7\bin;c:\oracle\ora81\bin;c:\WINDOWS\system32;c:\WINDOWS\Sys
tem32\wbem;c:\j2sdk1.4.2_06\bin;c:\oracle\T11\920\BIN;;C:\usr\sap\T11\sys\exe\run;c:\oracle\
T11\817\bin;c:\oracle\T11\920;c:\oracle\T11\920\BIN)

JAVA_HOME must be set to the installation
directory of the JDK.

PATH must contain the path(s):
C:\j2sdk1.4.2_06\jre\bin\classic
C:\j2sdk1.4.2_06\jre\bin\classic
```



```
2005/08/30 17:37:02 Info: *****
2005/08/30 17:37:02 Info: Creating new Java VM ...
2005/08/30 17:37:02 Info: JAVA_HOME is C:\j2sdk1.4.2_06
2005/08/30 17:37:02 Info: Java VM shared library name is jvm.dll.
2005/08/30 17:37:02 Info: Path to Java VM shared library is
C:\j2sdk1.4.2_06\jre\bin\classic.
2005/08/30 17:37:02 Info: Shared library path is C:\j2sdk1.4.2_06\jre\bin\classic.
2005/08/30 17:37:02 Info: Calculated path to JVM is
C:\j2sdk1.4.2_06\jre\bin\classic\jvm.dll
2005/08/30 17:37:02 Error: No valid name for Java VM shared library found.
2005/08/30 17:40:13 Info: *****
2005/08/30 17:40:13 Info: Creating new Java VM ...
2005/08/30 17:40:13 Info: JAVA_HOME is C:\j2sdk1.4.2_06
2005/08/30 17:40:13 Info: Java VM shared library name is jvm.dll.
```

2005/08/30 17:40:13 Info: Path to Java VM shared library is

C:\j2sdk1.4.2_06\jre\bin\classic.

2005/08/30 17:40:13 Info: Shared library path is C:\j2sdk1.4.2_06\jre\bin\classic.

2005/08/30 17:40:13 Info: Calculated path to JVM is

C:\j2sdk1.4.2_06\jre\bin\classic\jvm.dll

2005/08/30 17:40:13 Error: No valid name for Java VM shared library found.

Type the path of jvm.dll in PATH.



Upgrade Assistant - th04d436 - Input Window

File

Supply the following information:

Confirm the name of your R/3 system:

SAP SYSTEM ID = T11

The hostname of your central R/3 server:

SAP SYSTEM HOST = th04d436

Enter the R/3 instance number:

INSTANCE NUMBER = 00

OK

Java Applet Window

Upgrade Assistant - th04d436 - Input Window


File

The system identifier of your database:

DATABASE ID = T11

OK

Java Applet Window



Upgrade Assistant - th04d436 - Input Window

File

Enter the following passwords:

The password for ORACLE user "SYSTEM":
(may be MANAGER)

SYSTEM PASSWORD =

Verification of the password for ORACLE user "SYSTEM":

SYSTEM PASSWORD =

OK

Java Applet Window

Upgrade Assistant - th04d436 - Input Window

File

Enter at least the mount point of a CD titled "Master CD"
If you can mount several CDs, enter mount points for
all CDs of this type you have.

CD MOUNT POINT 07 = c:\dump\47upg\9632\9632_1

CD MOUNT POINT 08 = c:\dump\47upg\9632\9632_2

CD MOUNT POINT 09 = c:\dump\47upg\9632\9632_3

CD MOUNT POINT 10 = c:\dump\47upg\9632\9632_4

CD MOUNT POINT 11 = c:\dump\47upg\9632\9632_5

CD MOUNT POINT 12 = c:\dump\47upg\9519\9519_1

<< < > >> OK

Java Applet Window

Upgrade Assistant - th04d436 - Input Window

File

Enter at least the mount point of a CD titled "Master CD"
If you can mount several CDs, enter mount points for
all CDs of this type you have.

CD MOUNT POINT 07 = c:\dump\47upg\9632\9632_1

CD MOUNT POINT 08 = c:\dump\47upg\9632\9632_2

CD MOUNT POINT 09 = c:\dump\47upg\9632\9632_3

CD MOUNT POINT 10 = c:\dump\47upg\9632\9632_4

CD MOUNT POINT 11 = c:\dump\47upg\9632\9632_5

CD MOUNT POINT 12 = c:\dump\47upg\9519\9519_1

<< < > >> OK

Java Applet Window

Upgrade Assistant - th04d436 - Input Window

File

Supply the following information:

The actual password for R/3 user DDIC in client 000
(may be 19920706):

DDIC PASSWORD =

Verify actual password for R/3 user DDIC:

DDIC PASSWORD =

OK

Java Applet Window

start 6 W... C:\o... 2 M... C:\ju... Ado... 47u... 2 W... 5 I... SAP ... 6:14 PM

Upgrade Assistant - th04d436 - Input Window

File

The hostname of your batch server:

BATCH HOST =

OK

Java Applet Window

Upgrade Assistant - th04d436 - Input Window

File

Supply the following information:

The maximum number of parallel processes during uptime:

MAXIMUM UPTIME PROCESSES =

The number of parallel import processes:

R3TRANS PROCESSES =

The maximum profile value of "bufreftime":

MAXIMUM SYNC TIME =

OK

Java Applet Window

Upgrade Assistant - th04d436 - Input Window

File

The local syslog directory:

LOCAL SYSLOG PATH =

OK

Java Applet Window

Upgrade Assistant - th04d436 - Input Window

File

The password for Operating System account .\SAPServiceT11:

PASSWORD =

Verification of the password for Operating System account .\SAPServiceT11:

PASSWORD =

OK

Java Applet Window

Upgrade Assistant - th04d436 - Input Window

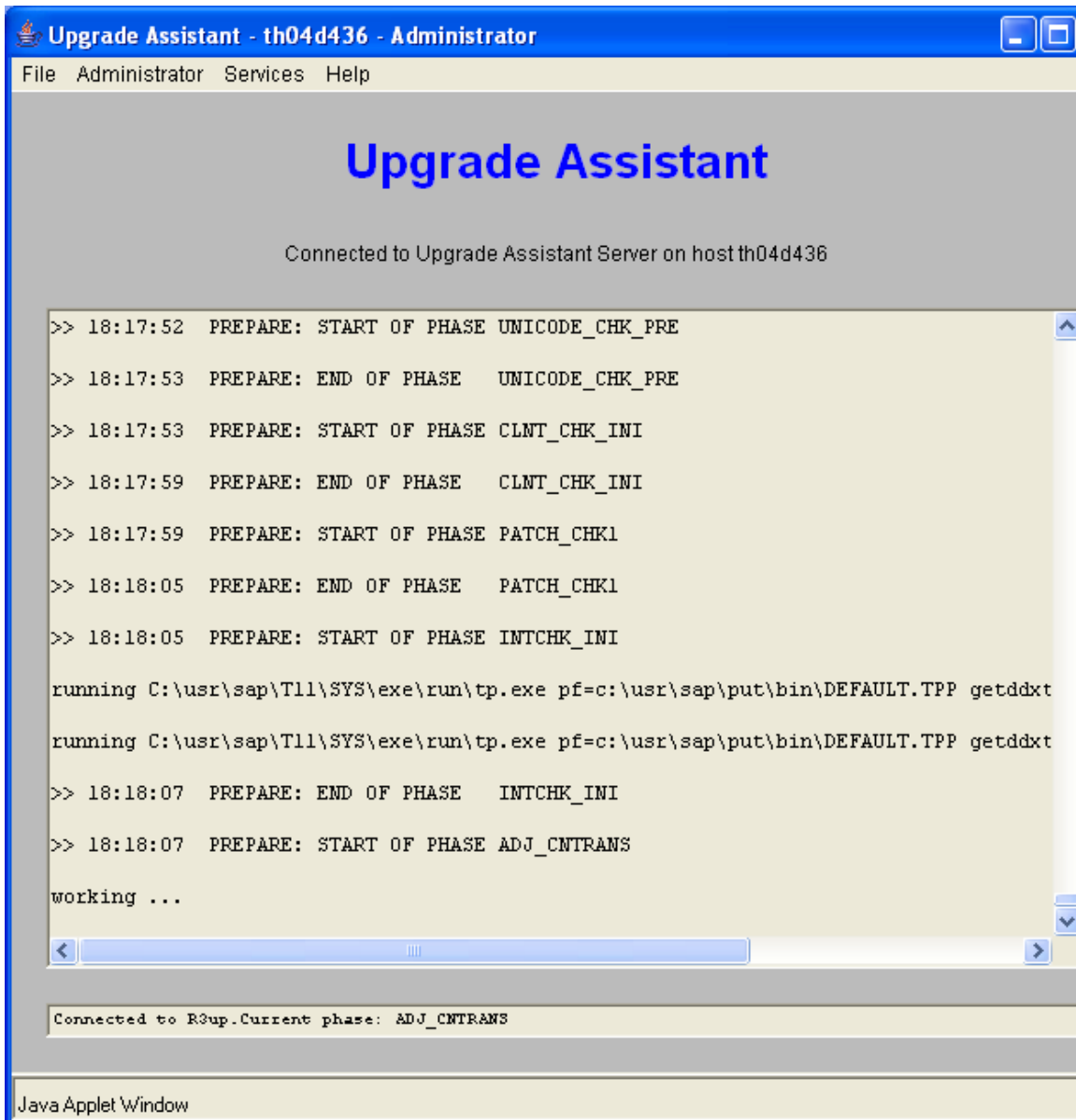
File

Is there more than one system running in this database?
(MCOD: Multiple components in one database)

☒ no
☐ yes

OK

Java Applet Window



47upg - Microsoft Word

Upgrade Assistant - th04d436 - Administrator

File Administrator Services Help

Upgrade Assistant - th04d436 - Upgrade Monitor

File

Upgrade Assistant

File Administrator S

>> 18:17:52 PRE

>> 18:17:53 PRE

>> 18:17:53 PRE

>> 18:17:59 PRE

>> 18:17:59 PRE

>> 18:18:05 PRE

>> 18:18:05 PRE

running C:\usr\s

running C:\usr\s

>> 18:18:07 PRE

>> 18:18:07 PRE

working ...

Connected to R3up.

Current phase

DBCHK_INI

RFCCHK_INI

VERCHK_INI

TOOLVERSION_INI

VALCHK_INI

CONFCHK_IMP

UNICODE_CHK_PRE

CLNT_CHK_INI

PATCH_CHK1

INTCHK_INI

ADJ_CNTRANS

INIT_CNTRANS

CNTRANS_PRE

Information

Starting R3up Monitor, please be patient ...

General information:

1) Values over 100% indicate a longer run time t
this is not an error

2) The active upgrade phase may differ from the
in the monitor for a time of 20 seconds

Upgrade Monitor starting with a period of 20 sec
Insufficient data to calculate the Forecast Reco
Insufficient data to calculate the Forecast Reco

Milestone runtime

0 %

Upgrade runtime

0 %

Java Applet Window

Java Applet Window

Page 28 Sec 1 28/28 At 1" Ln 1 Col 2 REC TRK EXT OVR

start

5 Wi...

C:\ora...

2 Mic...

C:\usr...

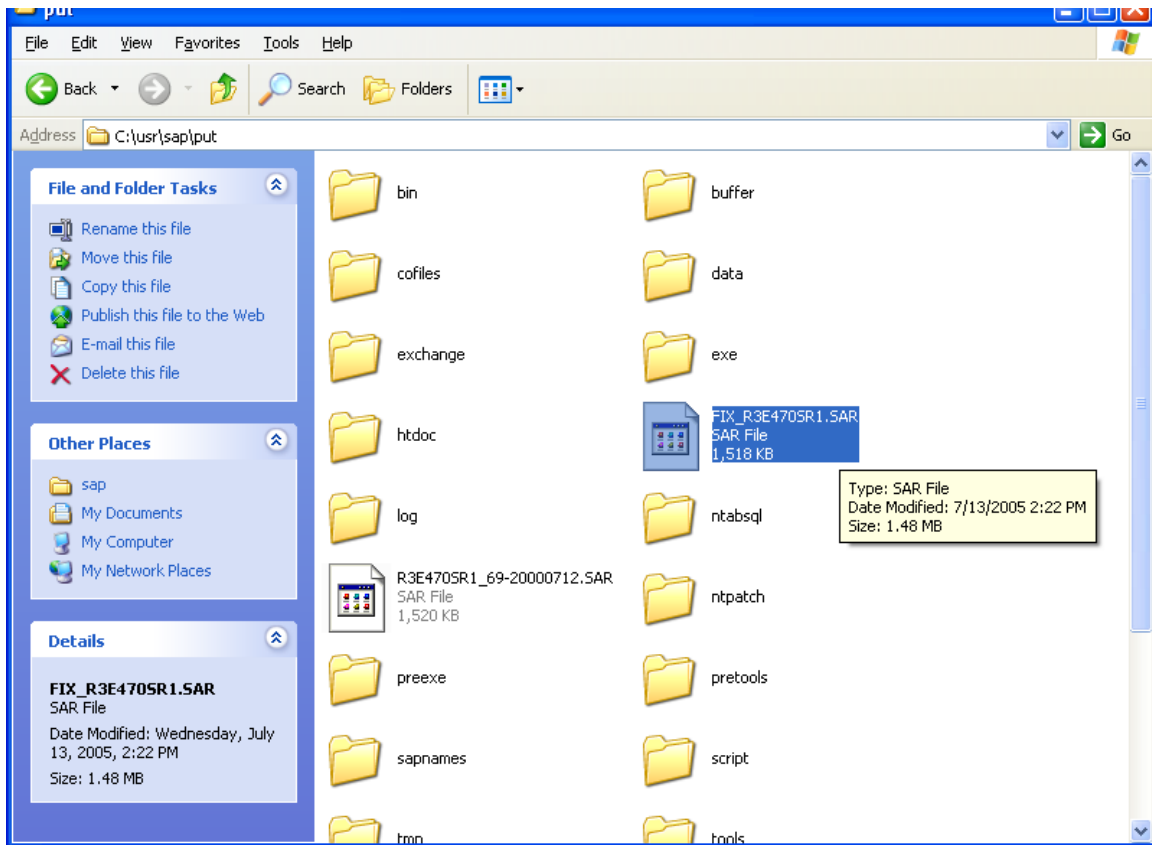
Adobe...

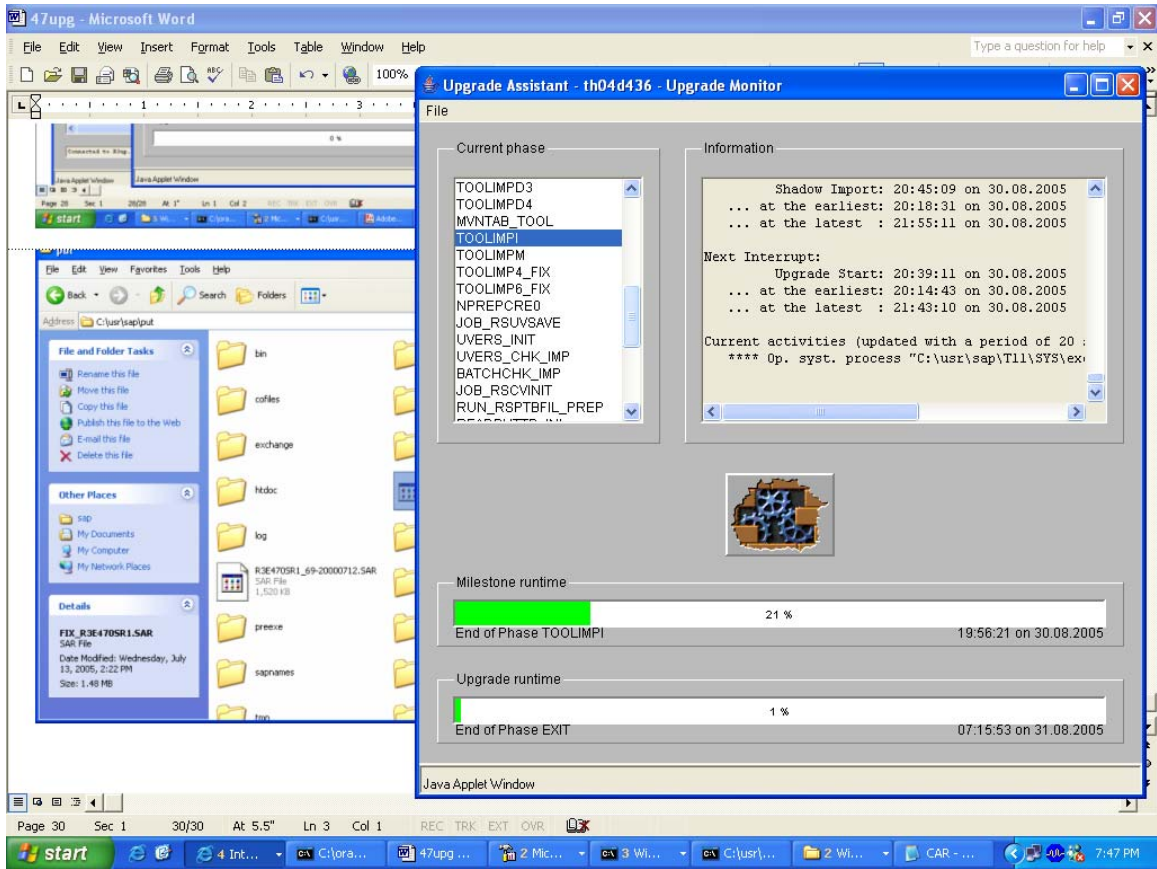
47upg...

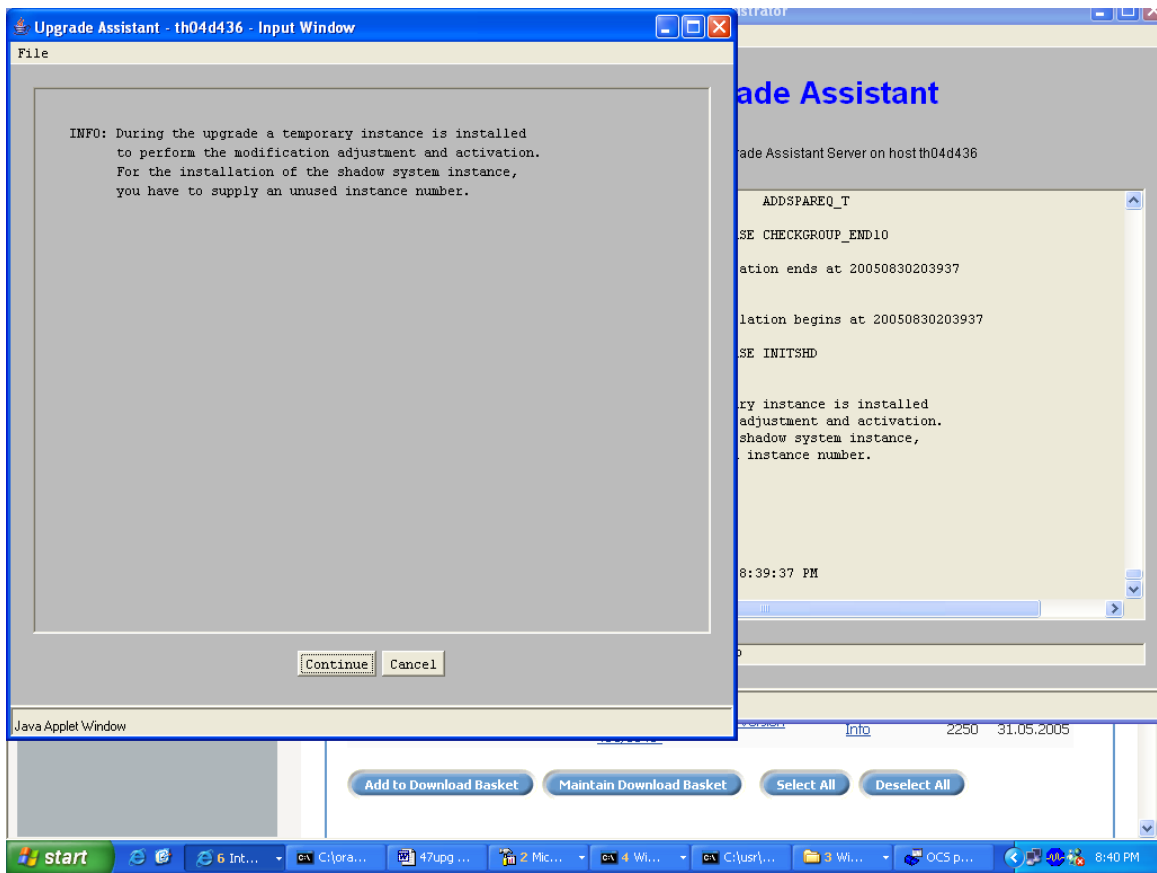
2 Wi...


4 Int...

6:19 PM







 Upgrade Assistant - th04d436 - Input Window

File

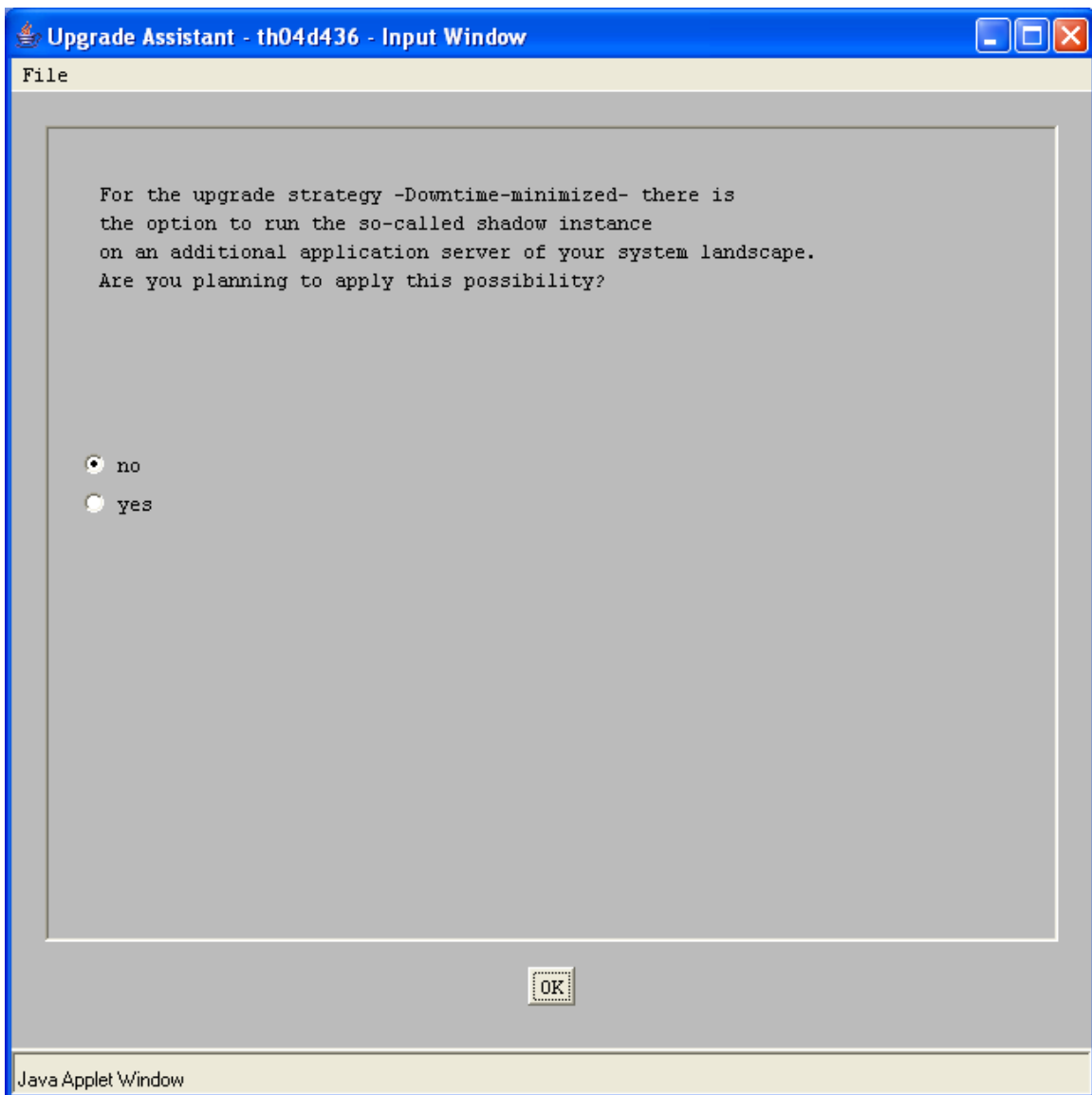
Supply the following information:

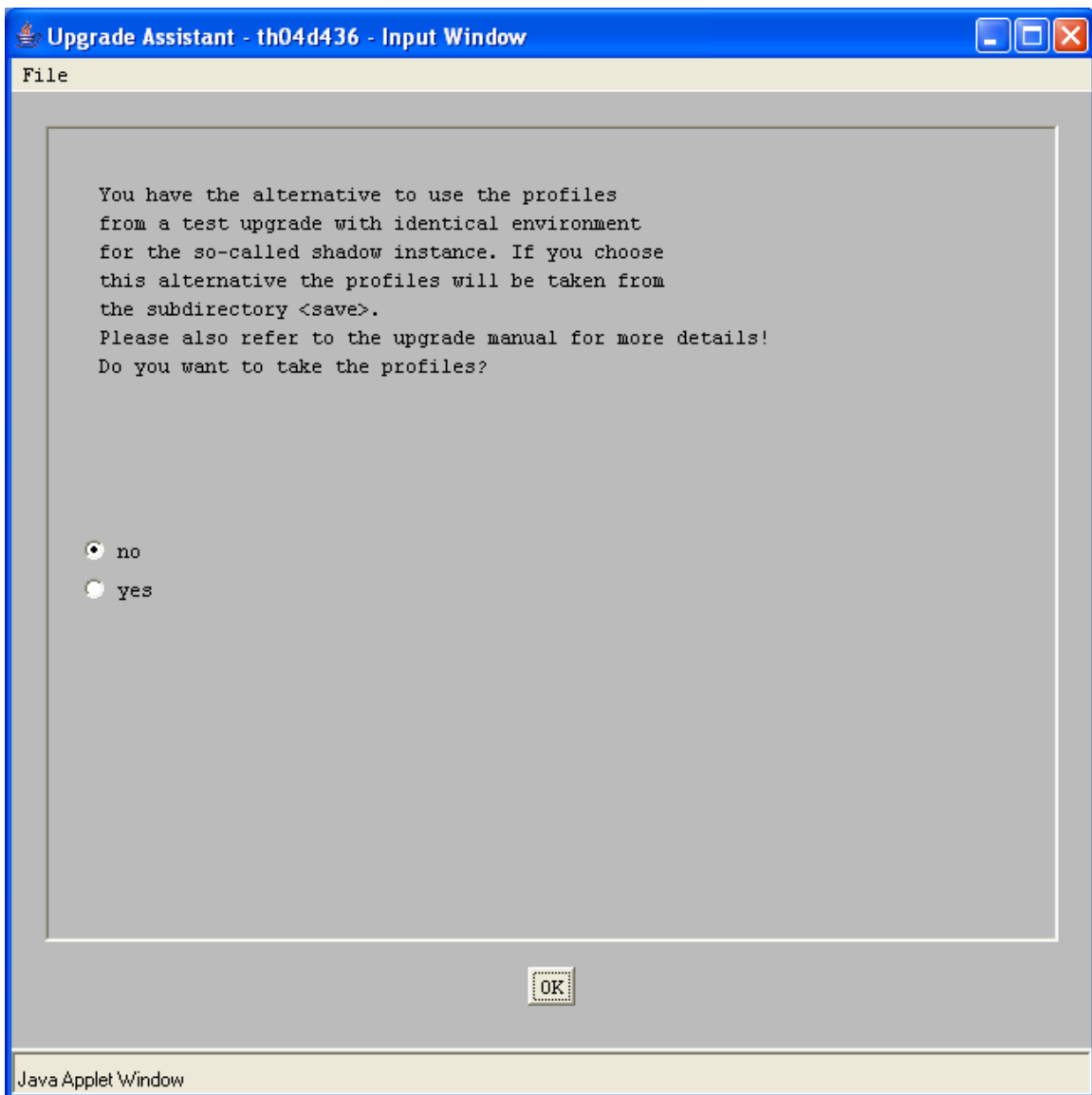
Enter an unused instance number for the shadow system:

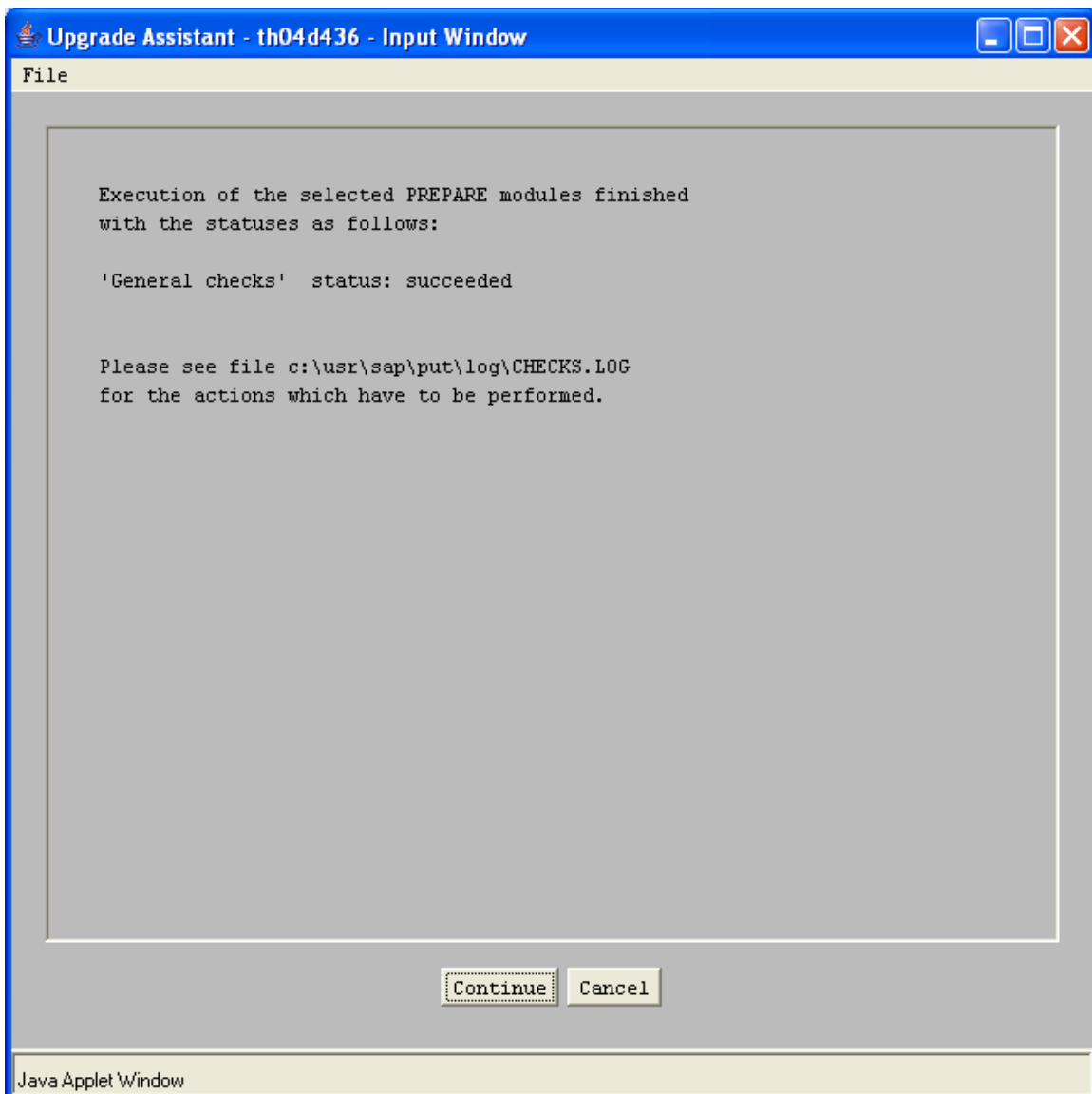
INSTANCE NUMBER =

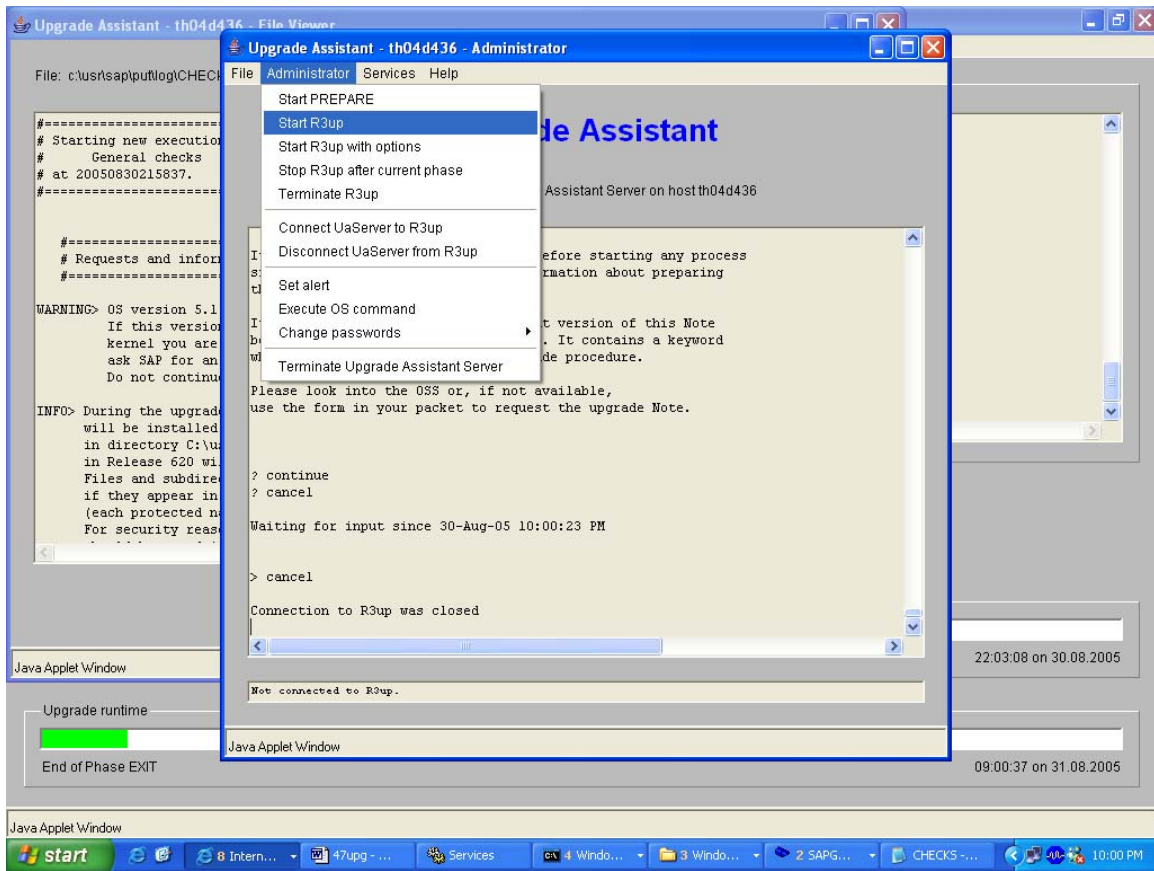
OK

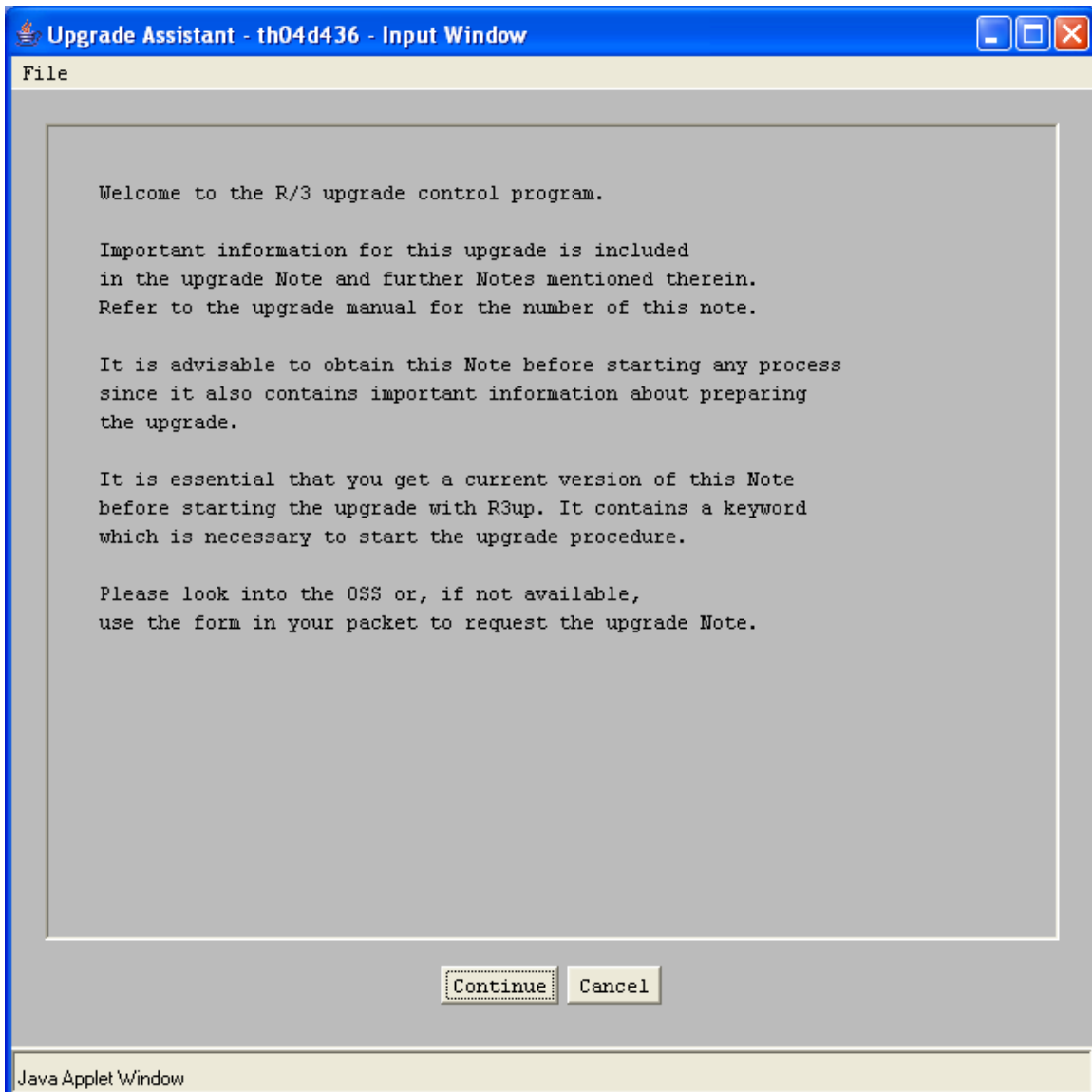
Java Applet Window

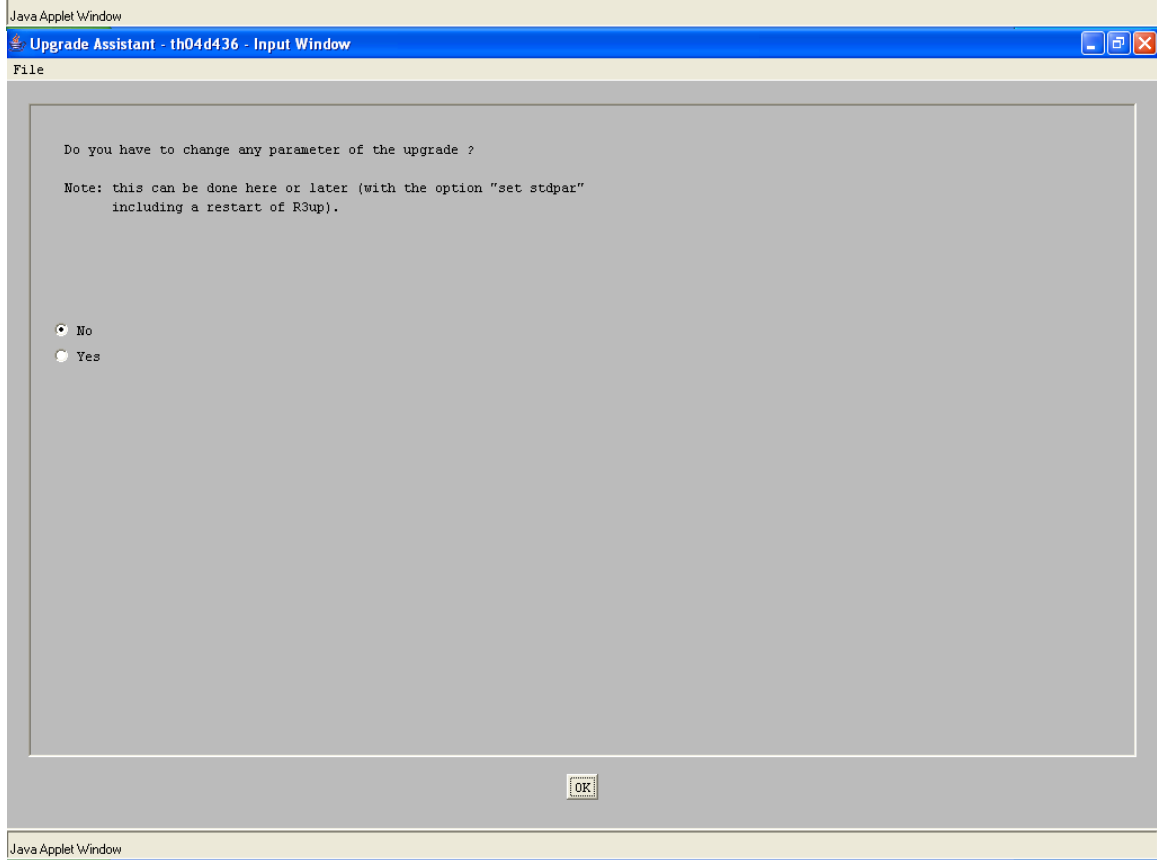
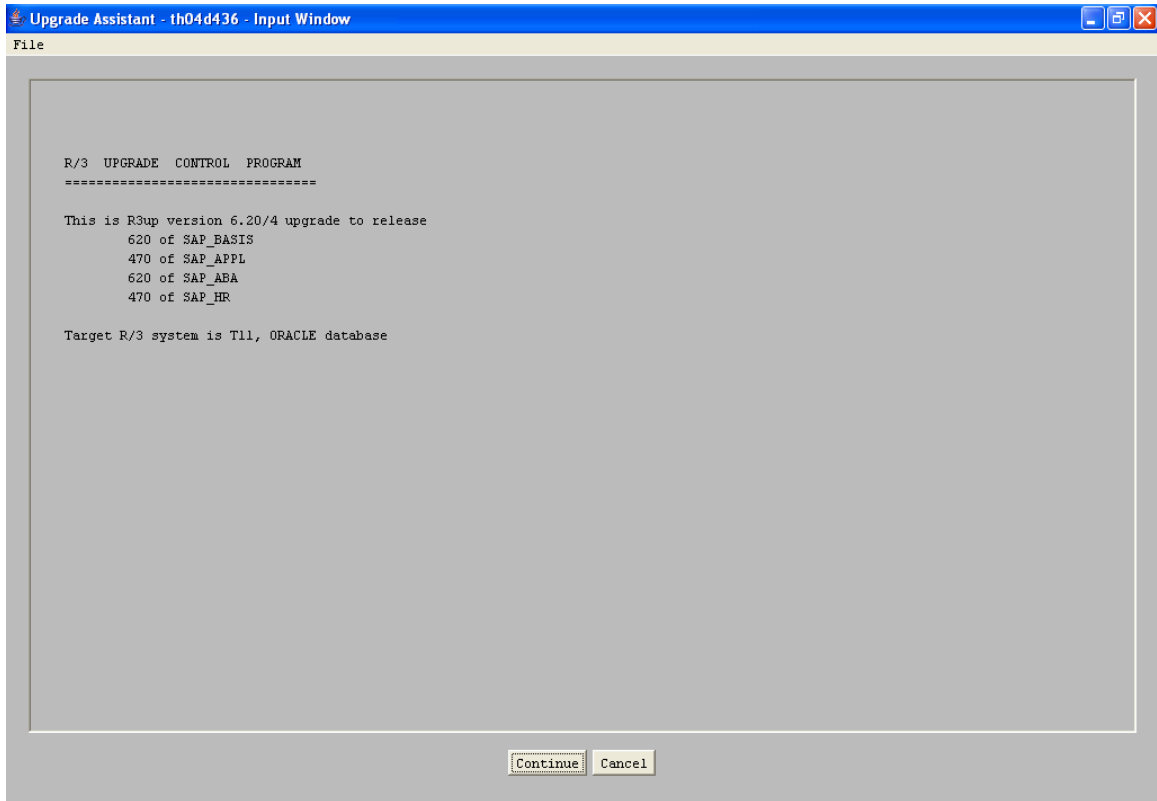


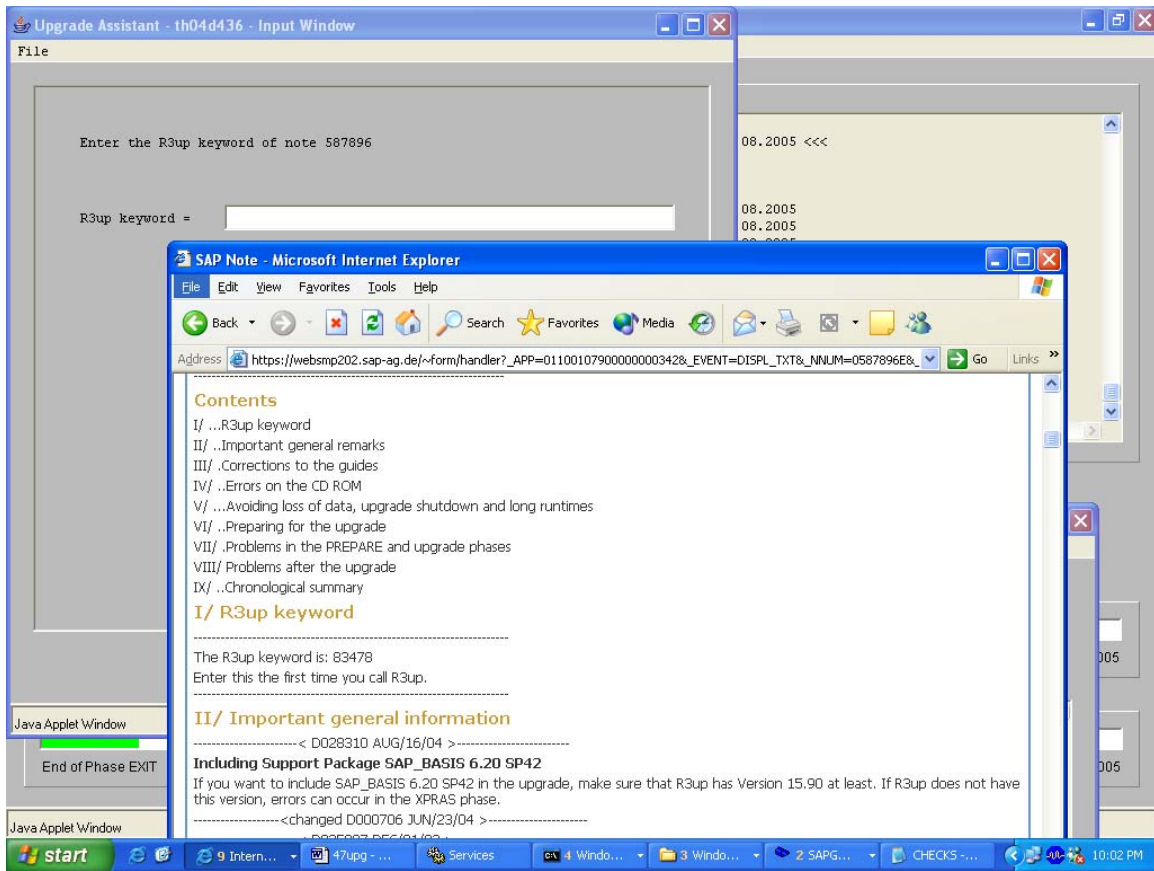


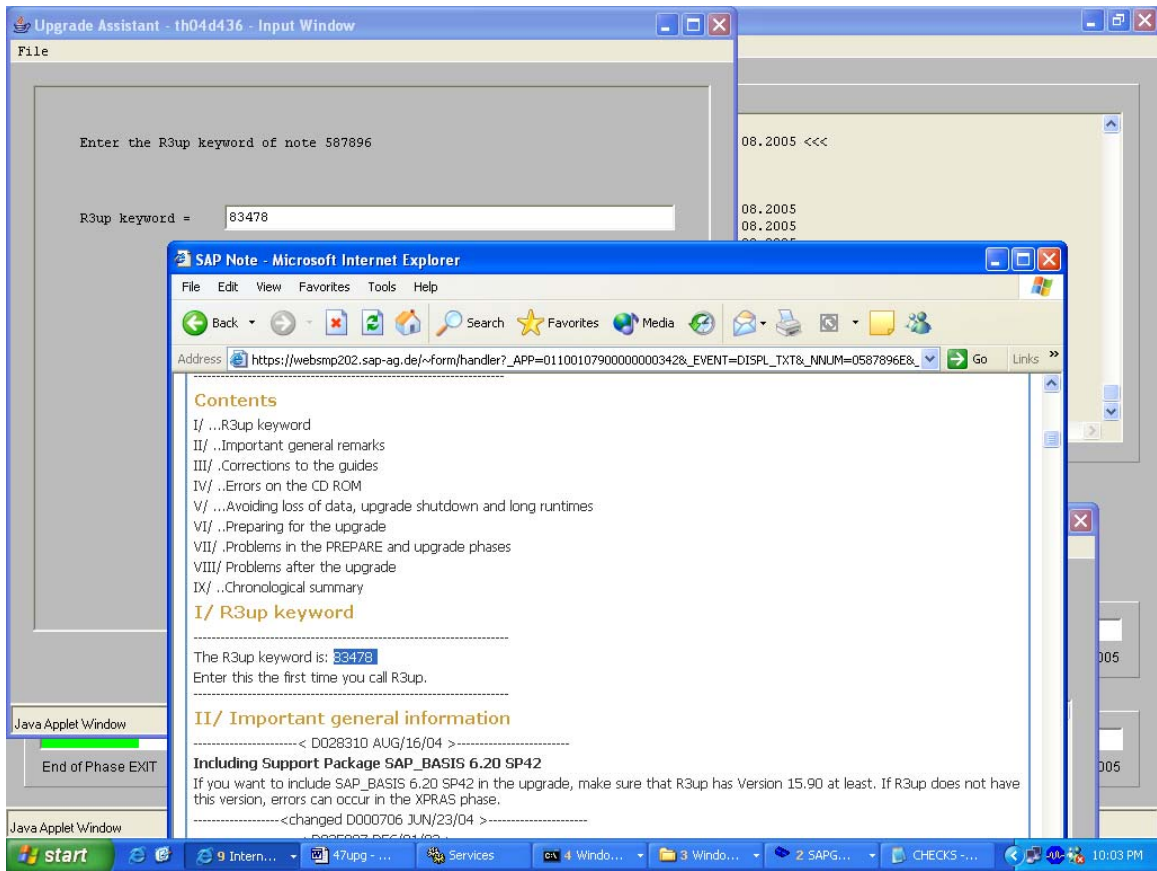


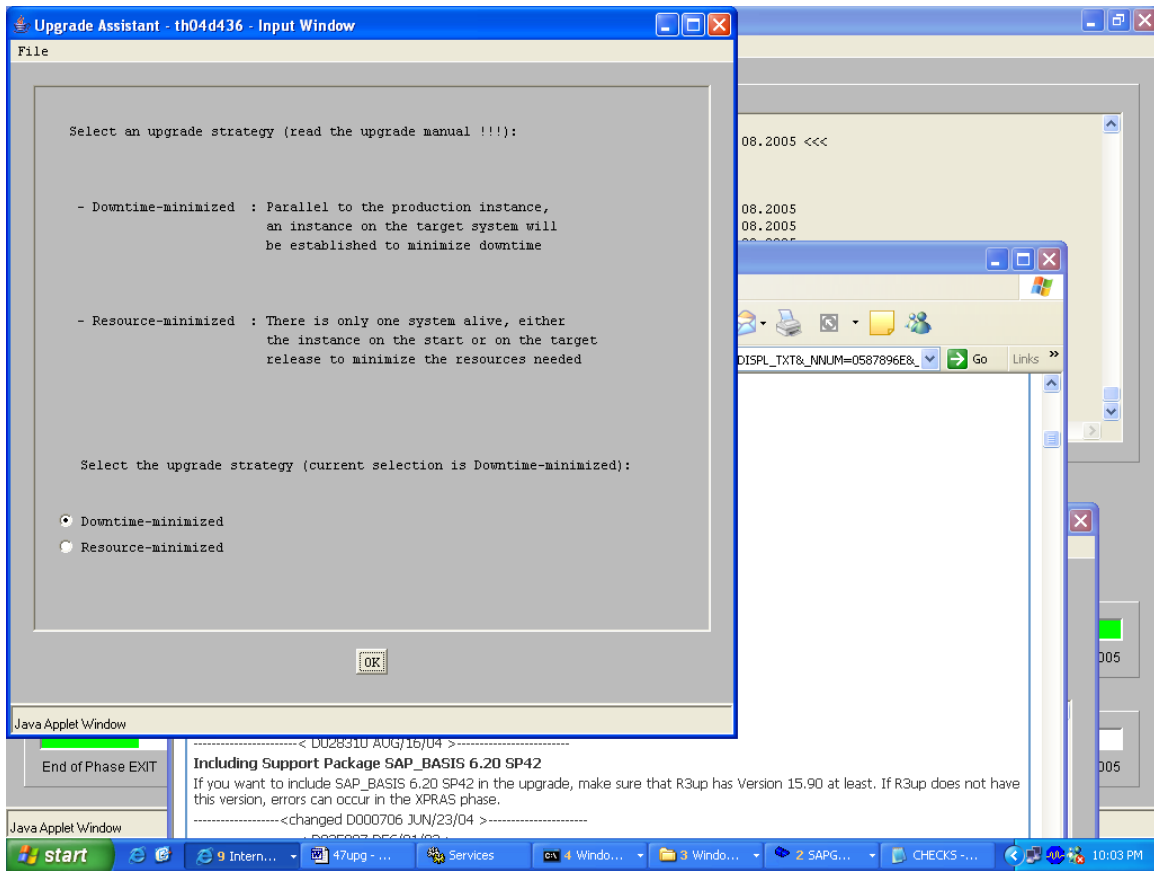


















Upgrade Assistant - th04d436 - Input Window







File

You selected upgrade strategy Downtime-minimized, where the import of the mass data in the EU_IMPORT phases should be slowed down to avoid performance drawbacks during production operation.

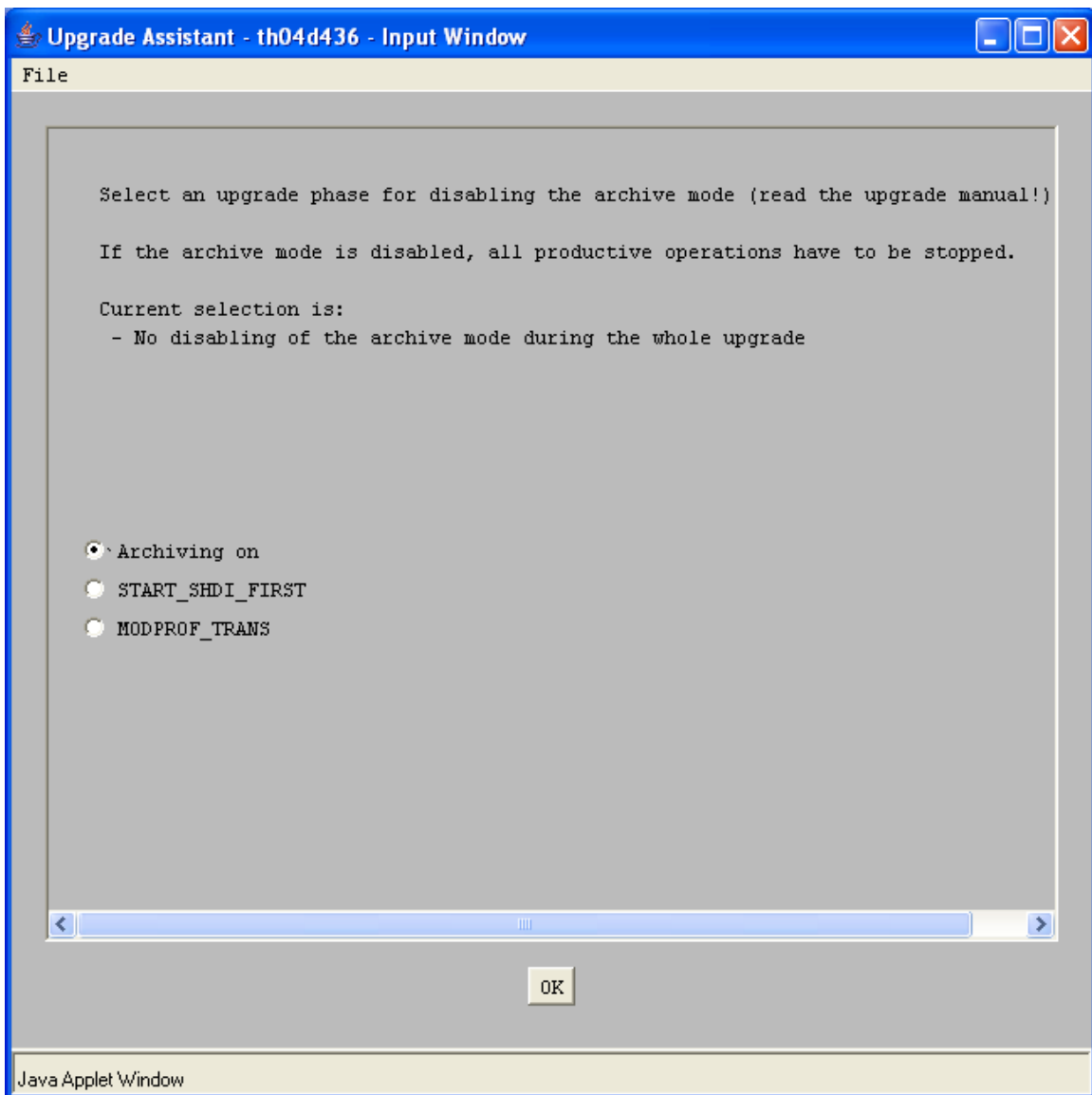
Please enter the time that this import shall take minus 20% as security distance.


The time for mass-import (EU_IMPORT-phases) in hours:

IMPORT TIME =

OK

Java Applet Window





Upgrade Assistant - th04d436 - Input Window

File

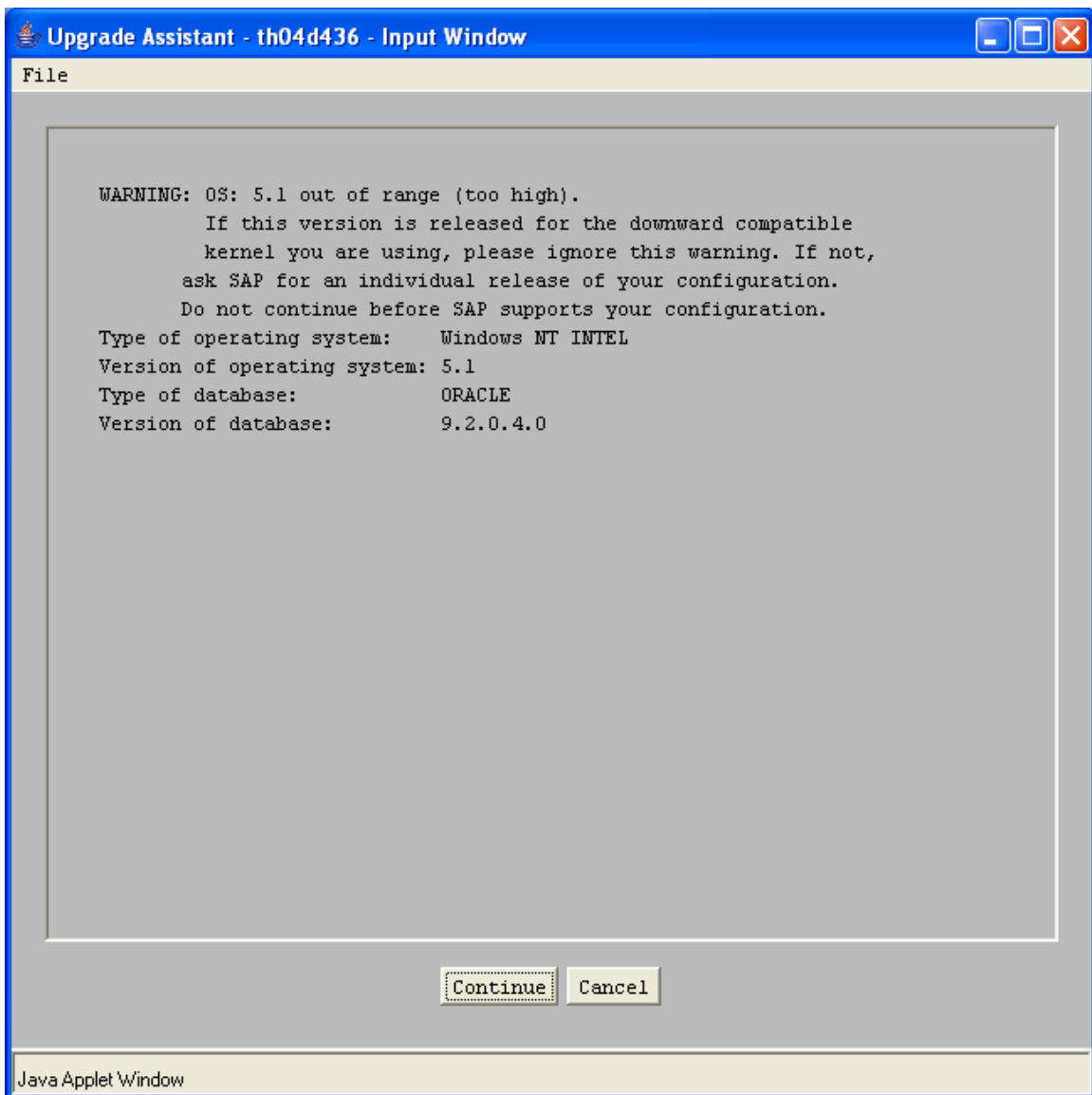
Enter maximum number of batch processes during the upgrade [3]

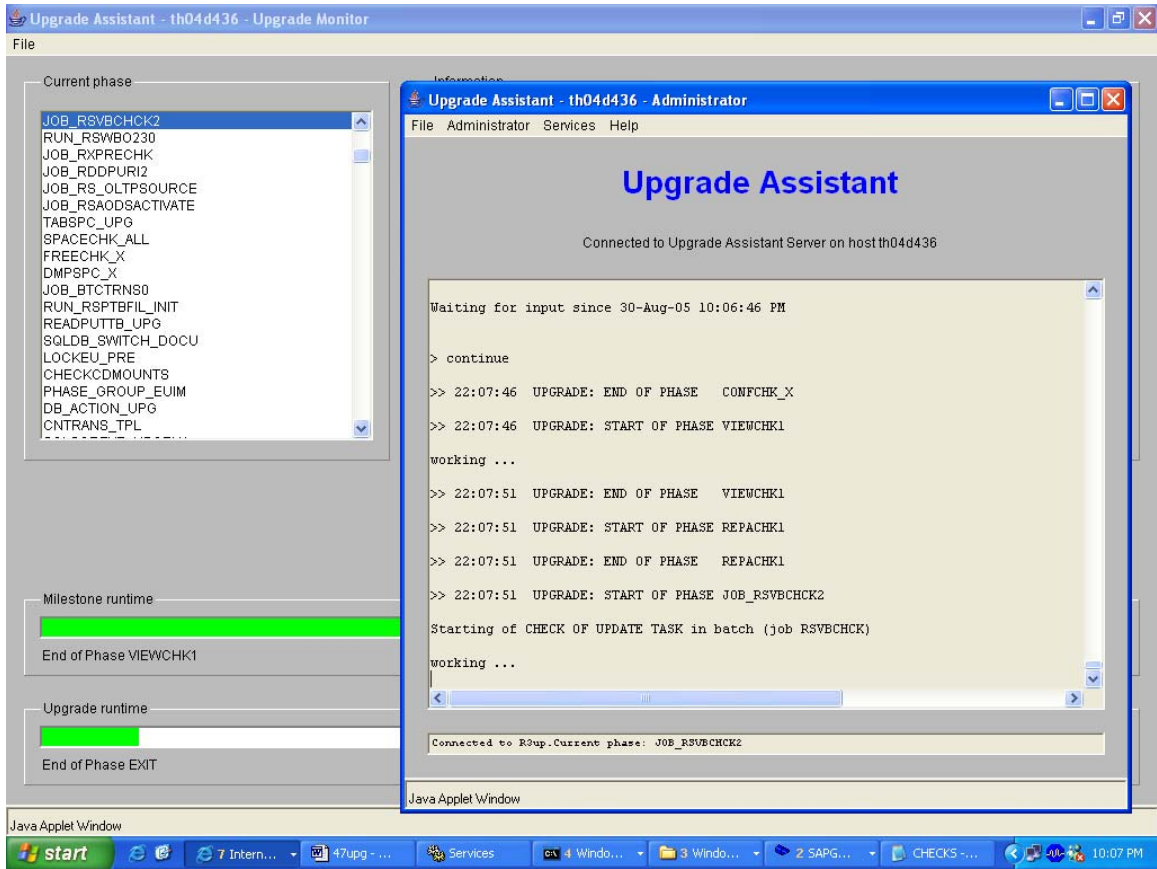
BATCH PROCESSES =

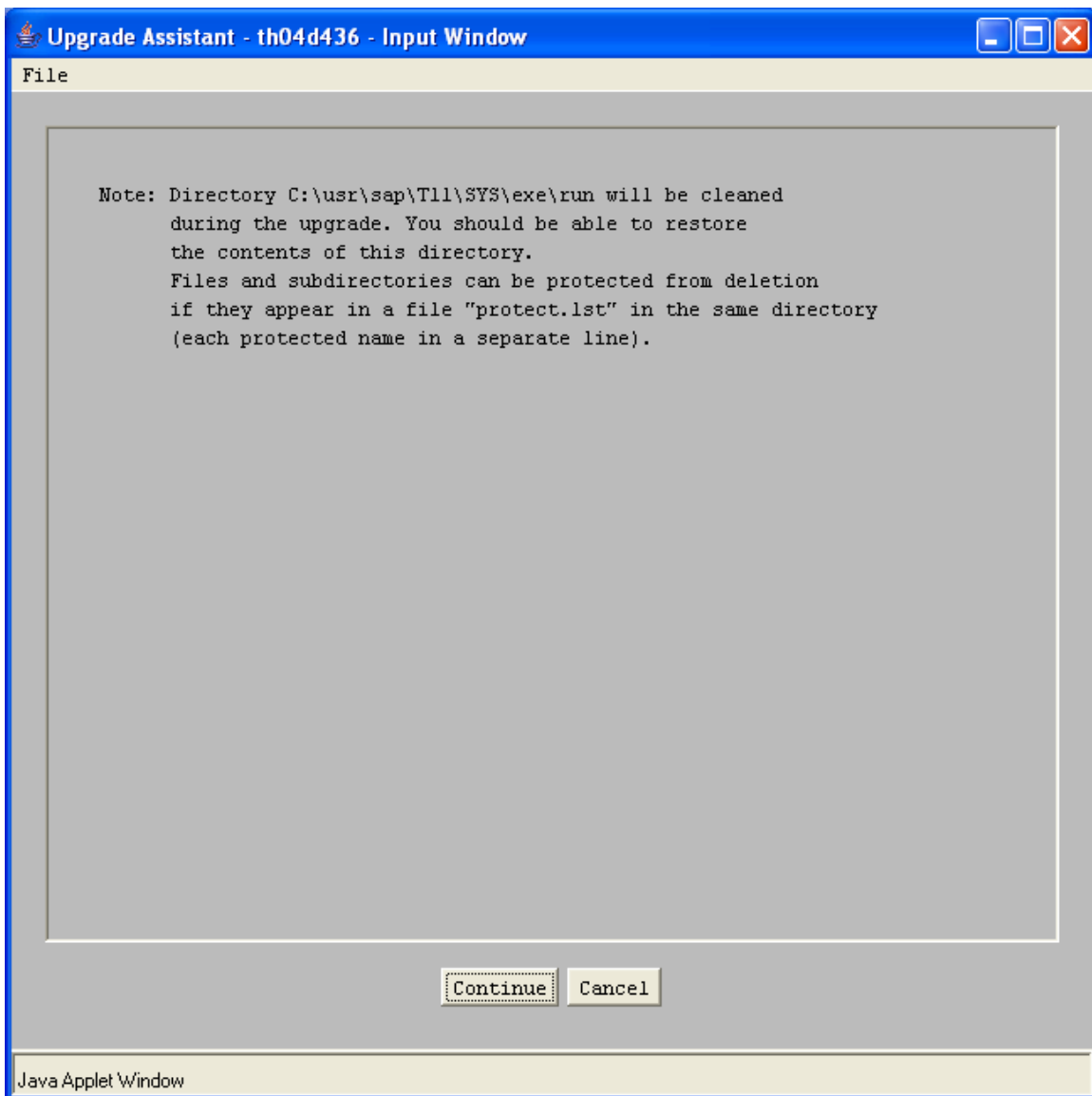
OK

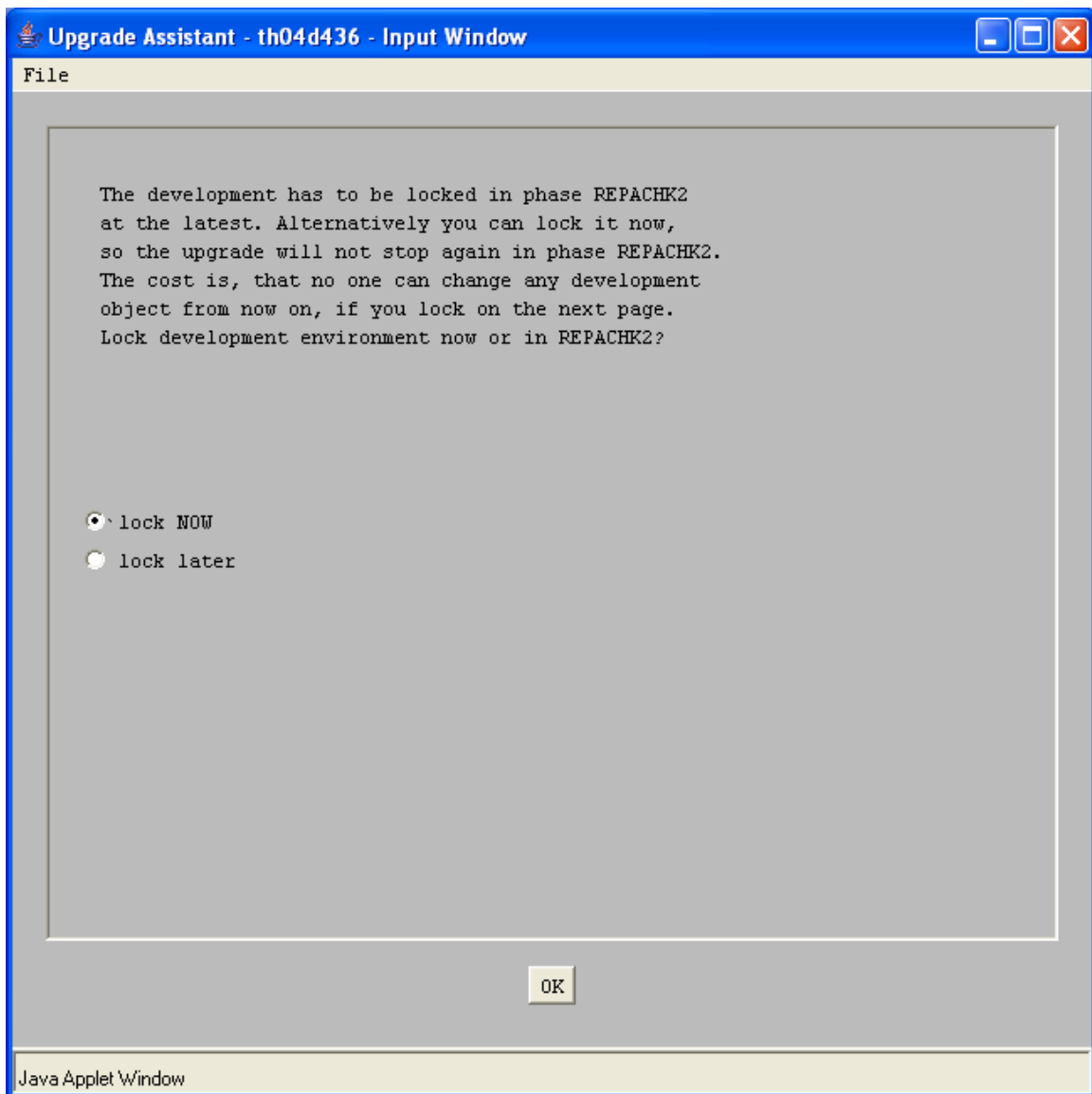
Java Applet Window



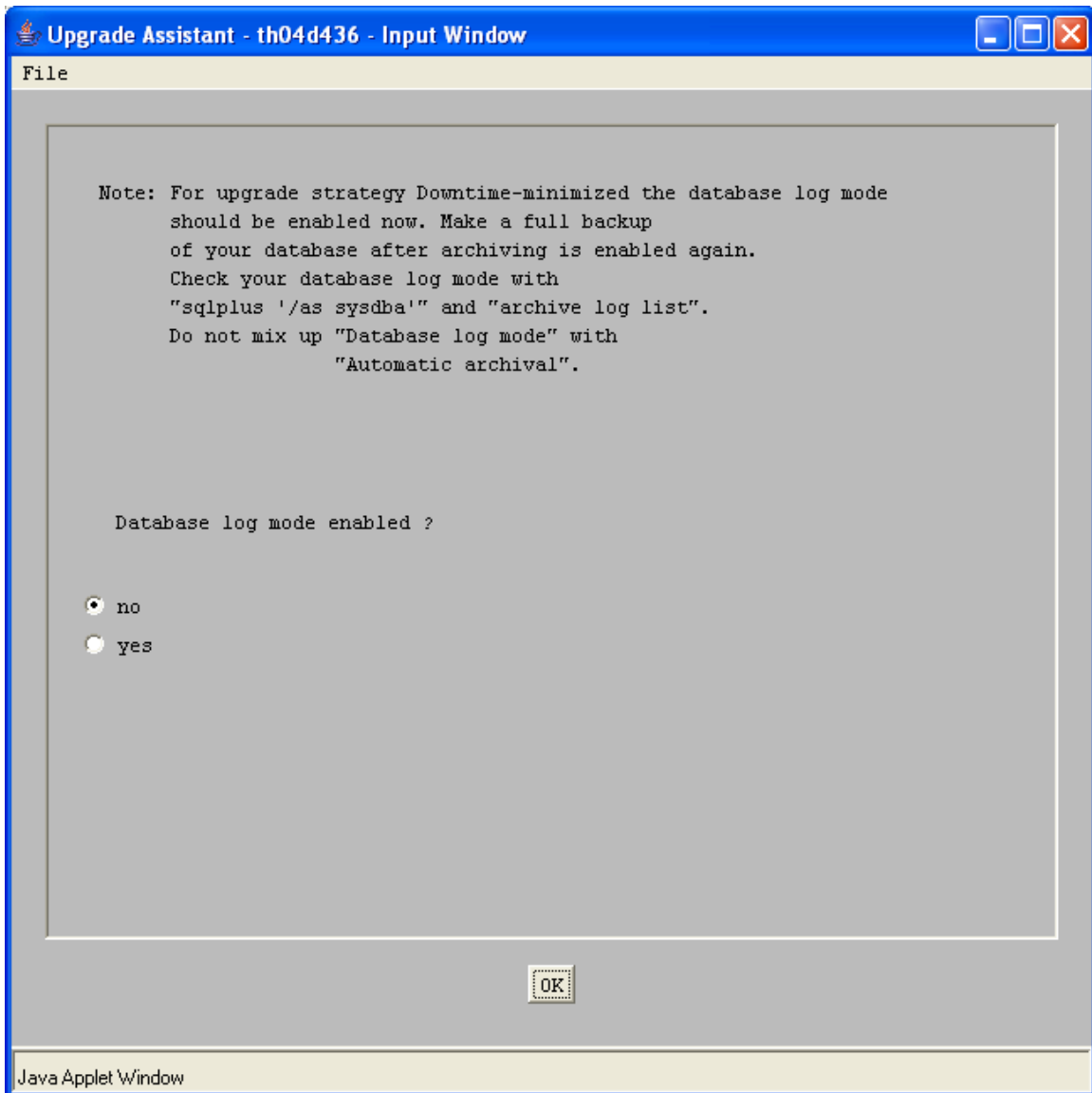


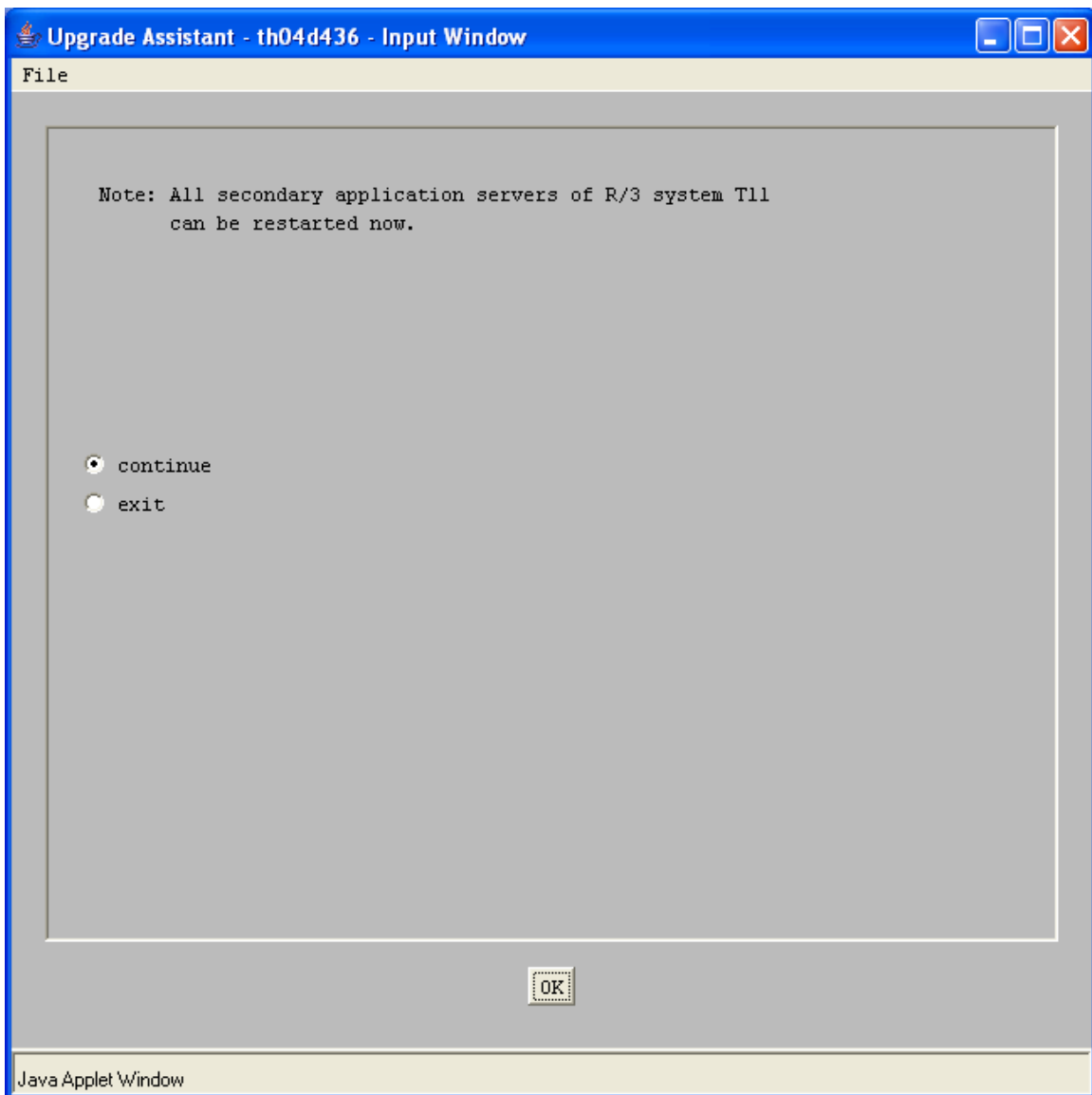


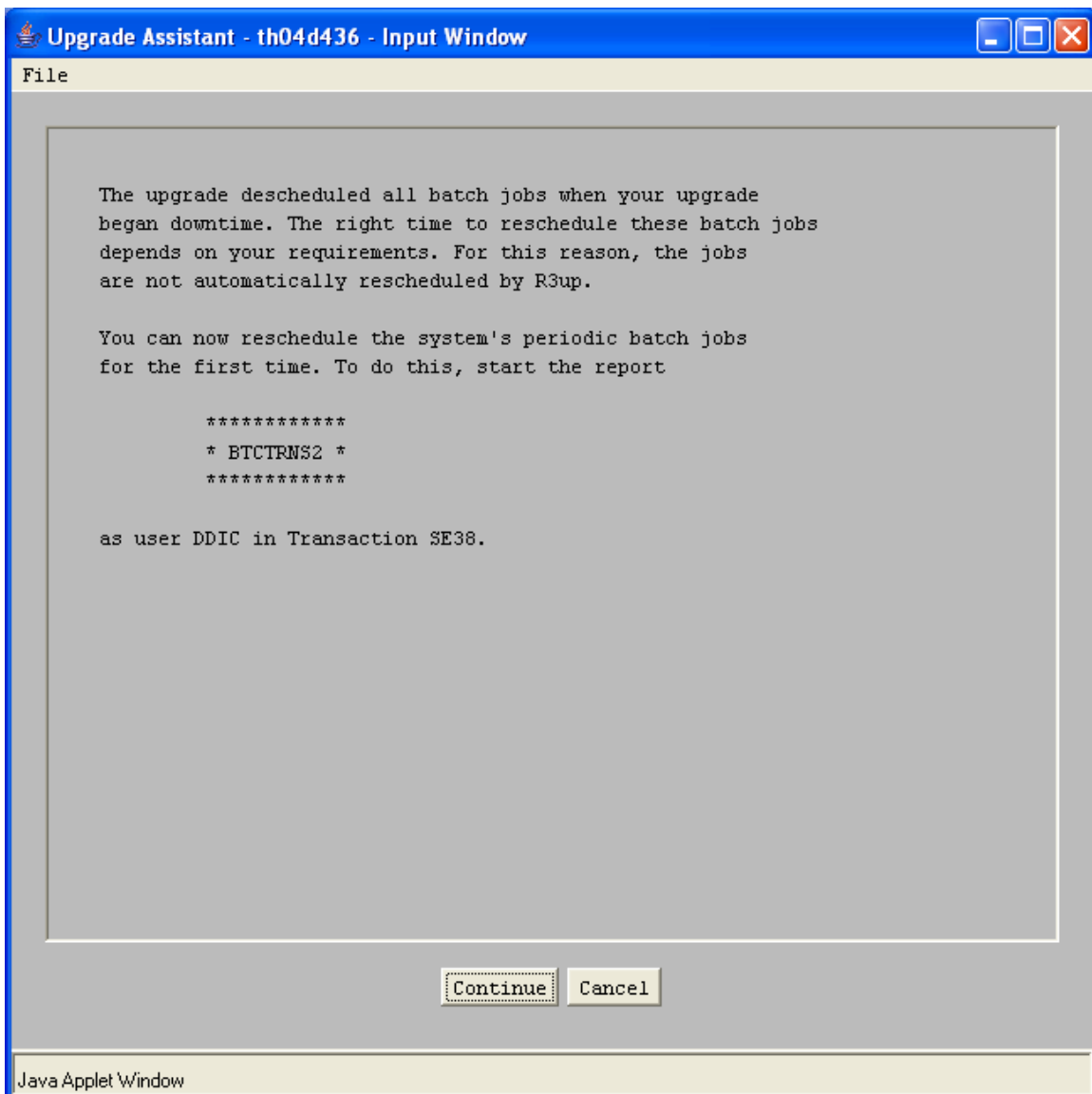


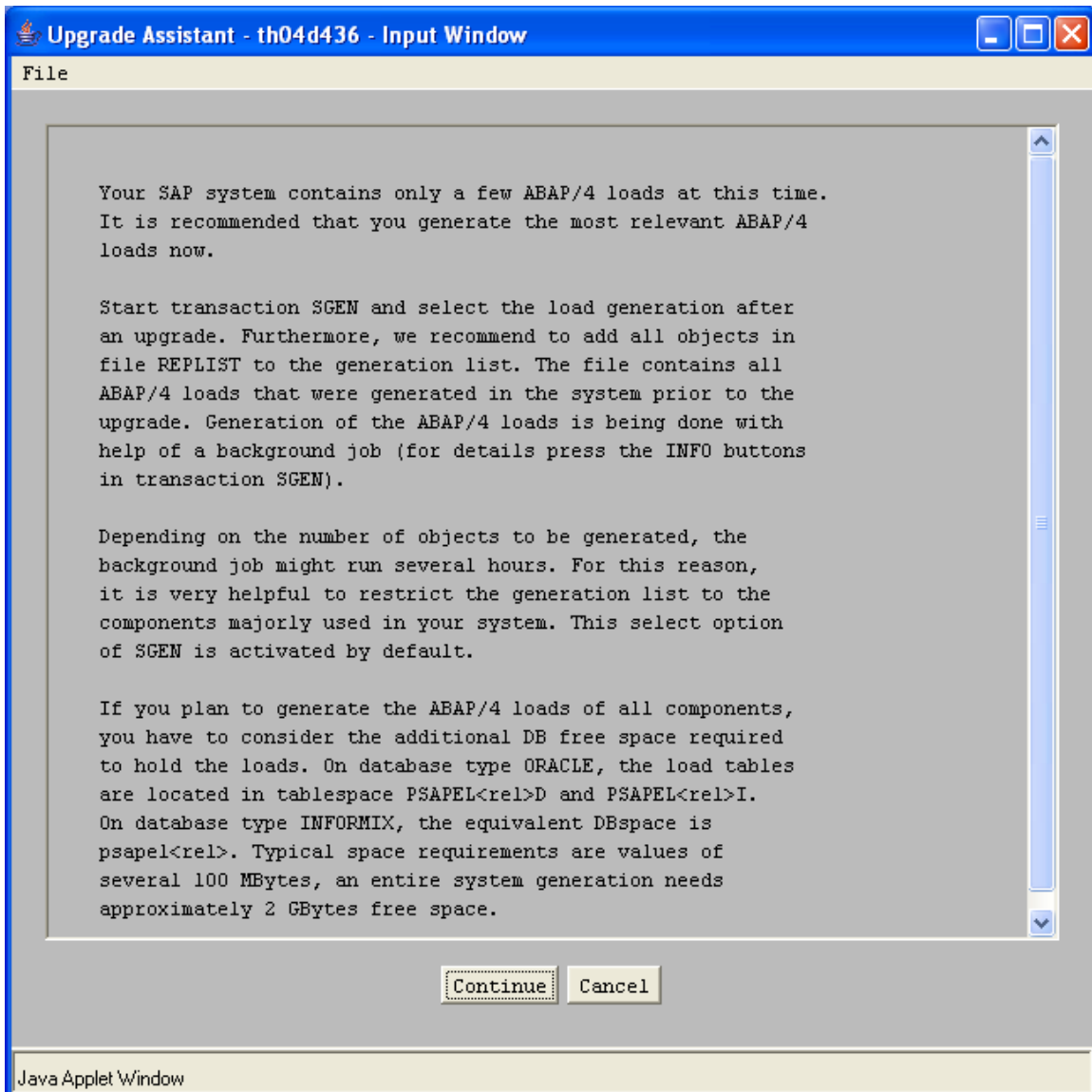


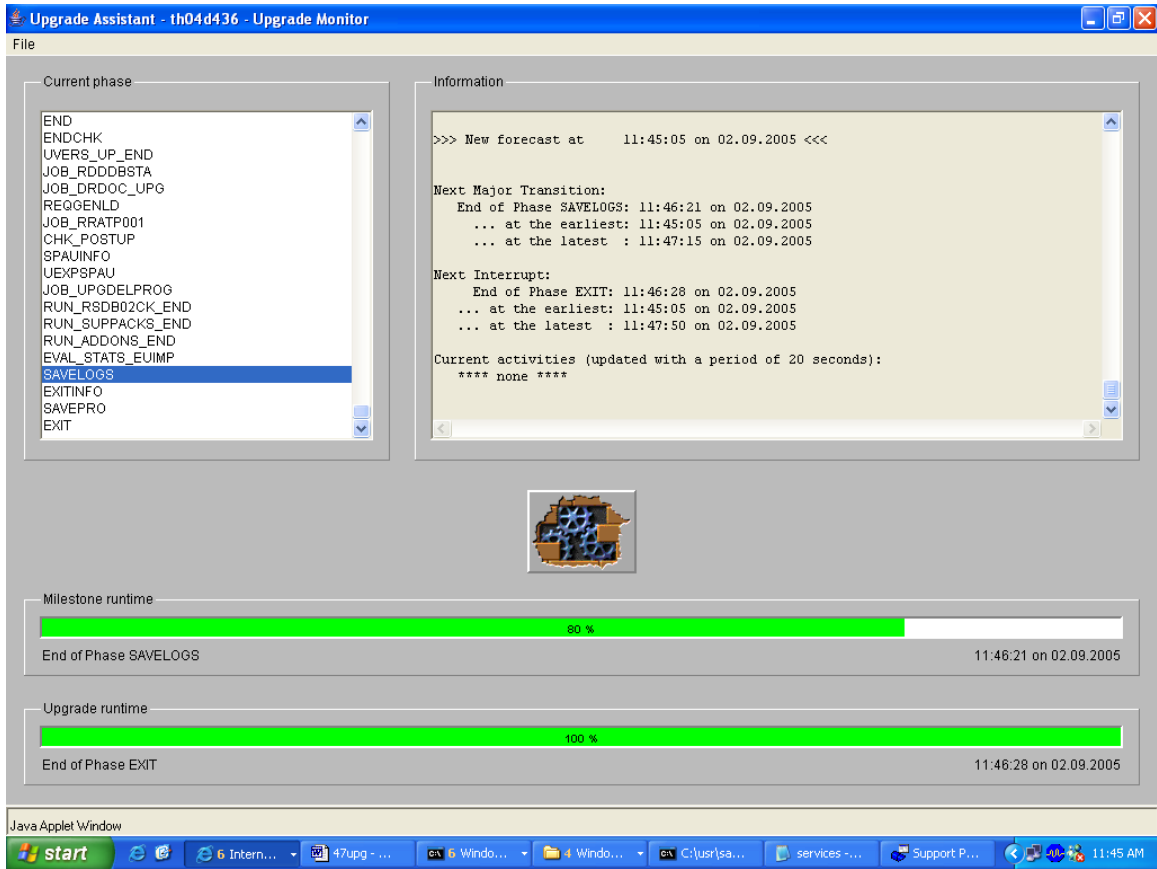
make a entry of sapmsSHDT11 3601/tcp in services file.

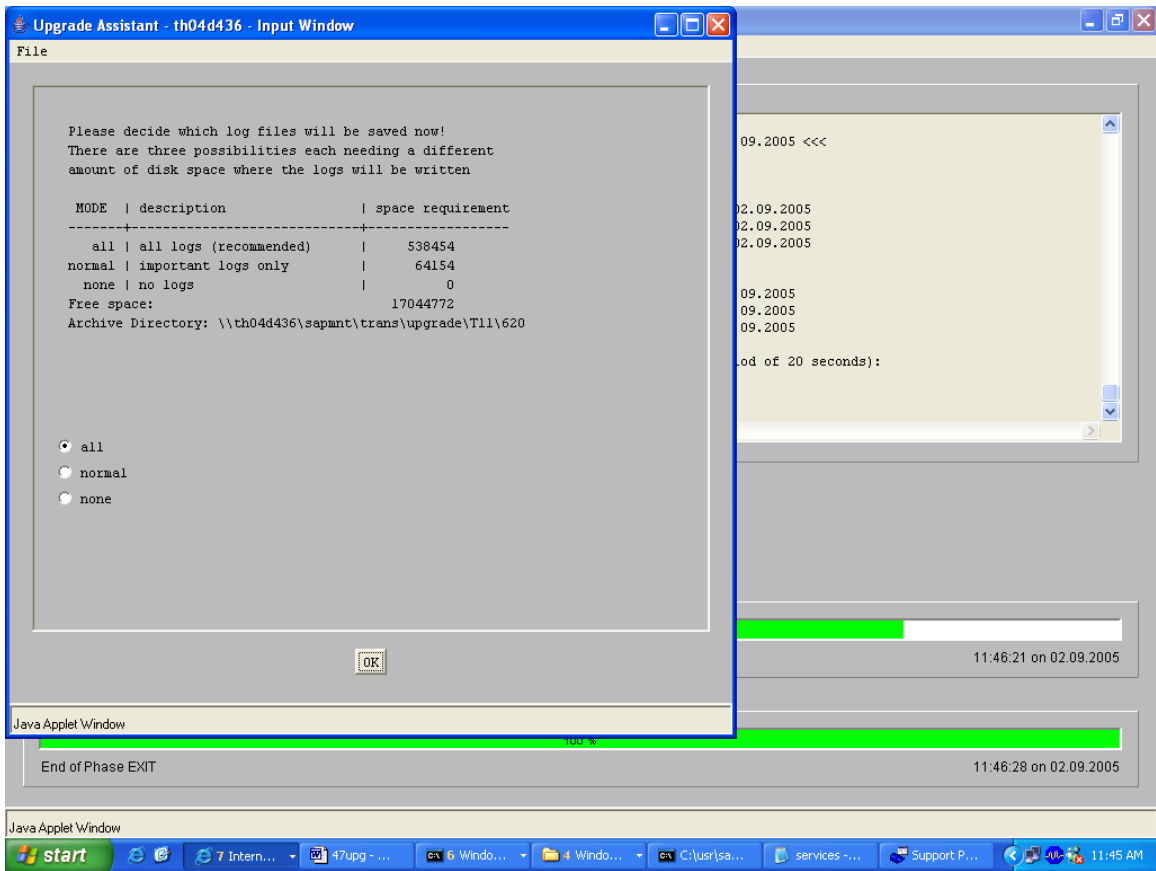


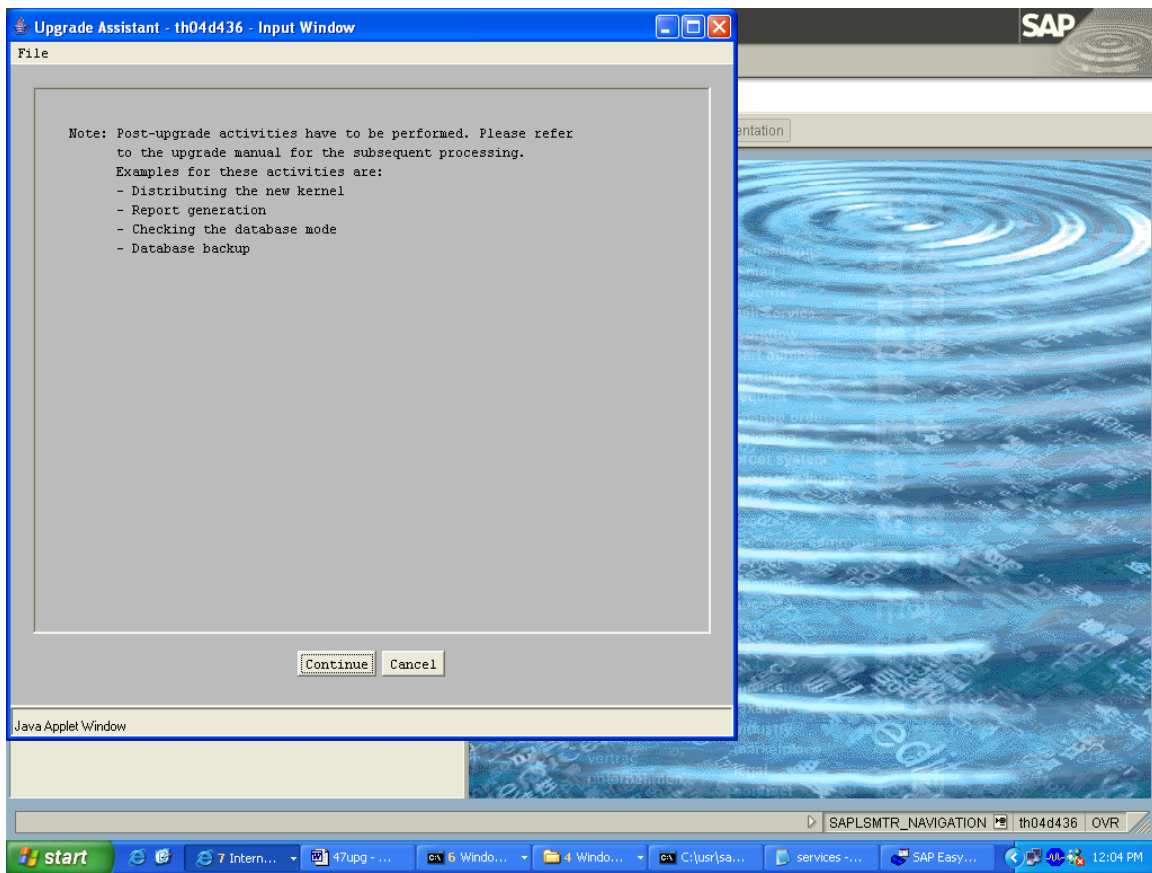


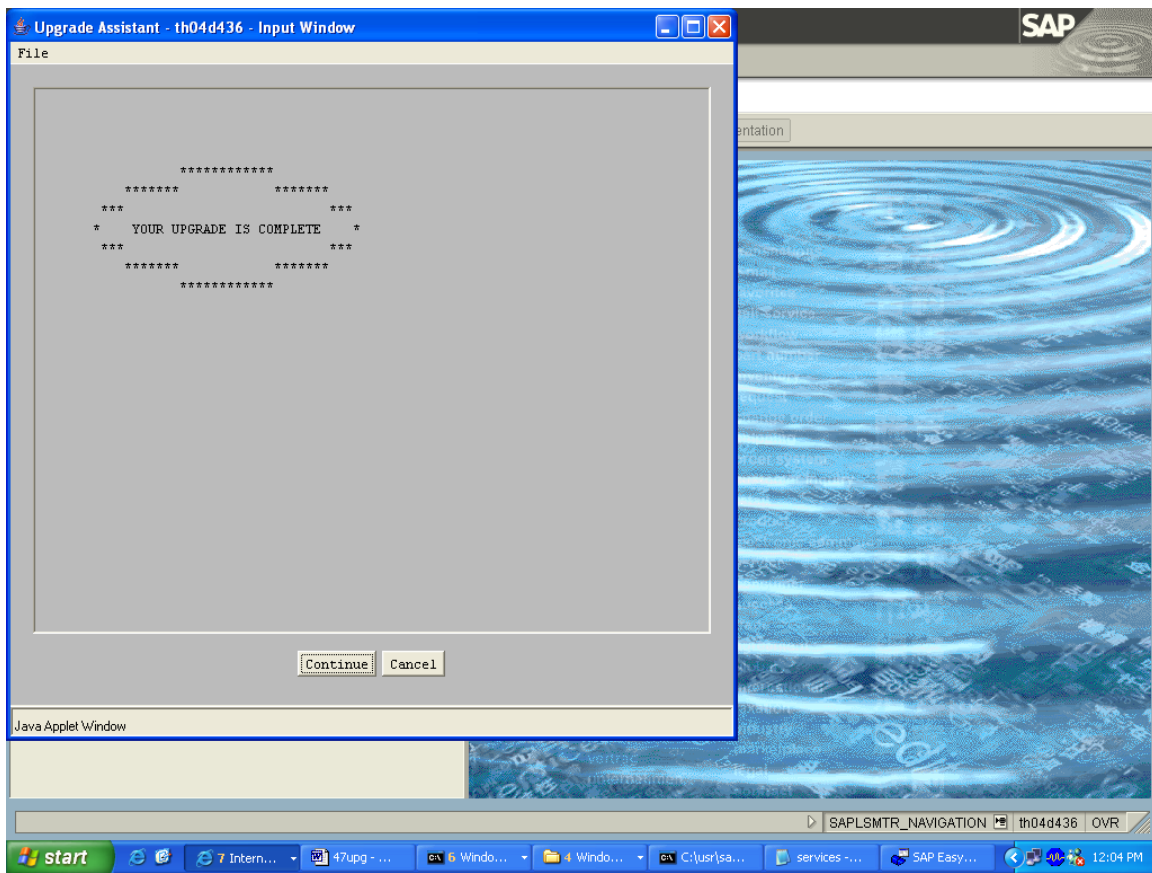












Credits to the Original Uploader in AF and thanks to the person involved in making this wonderful documentation with screenshots.

Converted to PDF by Jimstex for [SAP Database – Unofficial SAP Knowledge Base](#)