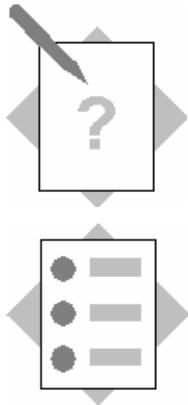


Internationalization Solution



Chapter: Internationalization

Theme: Developing International Web
Dynpro Applications

At the end of this Exercise, you are able to:

- Internationalize Web Dynpro applications.
- Create simple types that contain the interface texts.
- Save and read language-specific texts into/from a message pool.

4 Developing, Step-by-Step

4-1 Translate the default Text Resources into German (or other Languages).

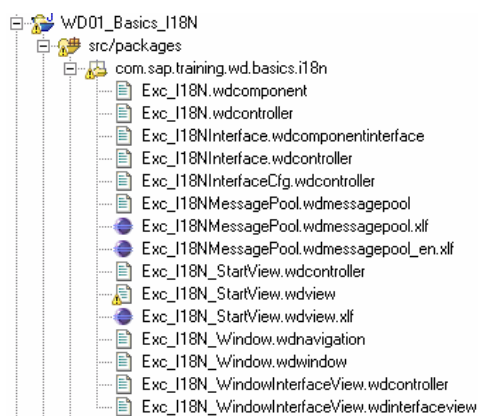
4-1-1 Copy the *.xlf* files and rename them (add “_de” (ISO Code for Germany) before “*.xlf*”)

Open the Package Explorer view.

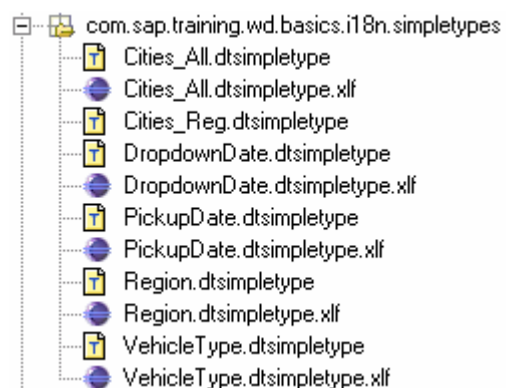
Expand the node *WD01_Basics_I18N / src / packages*.

Expand the nodes *com.sap.training.wd.basics.i18n* and
com.sap.training.wdbasics.i18n.simpletypes

com.sap.training.wd.basics.i18n



com.sap.training.wd.basics.i18n.simpletypes



Note: The project *WD01_Basics_I18N* project has been created in the project

language American English. You define this default language when you create a new Web Dynpro project. For this reason, all text input in the tutorial has been in English up to now. The *.xlf files that are not assigned to a specific language are used by default.

Step1:

In the context menu of the file

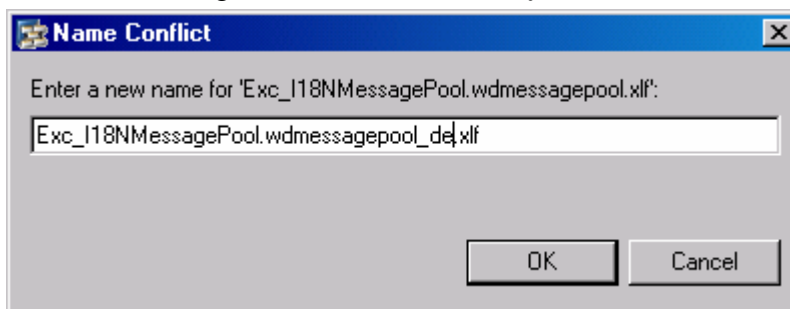
I18N_ComponentMessagePool.wdmessagepool.xlf, choose *Copy*.

Step2:

In the context menu of the same directory, choose *Paste*.

Step 3:

In the next dialog box, add *_de* before *.xlf* and choose *OK*



Repeat steps 1- 3 for the following files:

com.sap.training.wd.basics.i18n

StartView.wdview.xlf

com.sap.training.wd.basics.i18n.simpletypes

Cities_All.dtsimpletype.xlf

DropDownDatel.dtsimpletype.xlf

PickupDatel.dtsimpletype.xlf

Region.dtsimpletype.xlf

VehicleType.dtsimpletype.xlf

4-1-2 Translate the “_de.xlf” file.

Step 1:

Open the file *I18N_ComponentMessagePool.wdmessagepool_de.xlf* by double-clicking on it. This file is displayed in the S2X Editor.

Step 2:

On the tab *Header*, change the source language to German by selecting this language from the dropdown list.

Step 3:

Switch to the tab *Resource Text*. Translate the text.

Repeat the steps 1- 3 for the other “_de.xlf” files:

Use the following translations:

StartView.wdview_de.xlf

English	German
Please enter a valid date for field {0}. You entered {1}, which is a date in the past and therefore not a valid date.	Bitte geben Sie für Feld {0} einen gültigen Wert ein.
{0}: Entry of a valid {0} is required for proceeding.	Eingabe in {0} erforderlich.
Please enter a valid end date. You entered {0}, which lies before the start date {1}.	Bitte geben Sie ein gültiges Datum ein.
Please enter a valid date.	Bitte geben Sie einen gültigen Wert ein.

ComponentMessagePool.wdmessagepool_de.xlf

English	German
Person data	Personen Daten
Save	Sichern
Reset	Zurücksetzen
Welcome to Web Dynpro	Willkommen bei Web Dynpro
Last name	Nachname
Dropdown location	Rückgabeort
Region	Region
Pickup location	Abholort
First name	Vorname

Cities_All.dtsimpletype_de.xlf

English	German
Rome	Rom
San Francisco	San Francisco
Walldorf	Walldorf
New York	New York
Heidelberg	Heidelberg
London	London

DropdownDate.dtsimpletype_de.xlf

English	German
Dropdown date	Rückgabedatum

PickupDate.dtsimpletype_de.xlf

English	German
Pickup date	Abholdatum

Region.dtsimpletype_de.xlf

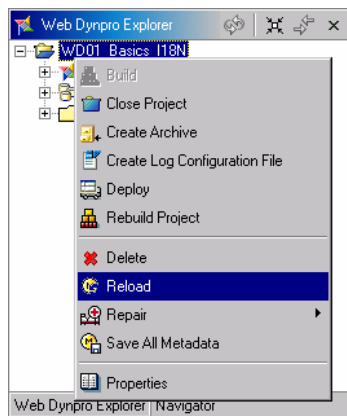
English	German
North America	Nordamerika
Oceania	Ozeanien
Asia	Asien
South America	Südamerika
Africa	Afrika
Europe	Europa

VehicleTypes.dtsimpletype_de.xlf

English	German
Minivan	Minivan
Compact	Kompaktklasse
Cabrio	Cabrio
Economy	Kleinwagen
Luxury	Luxusklasse

Save the new project data by choosing *Save All Metadata* from the toolbar.

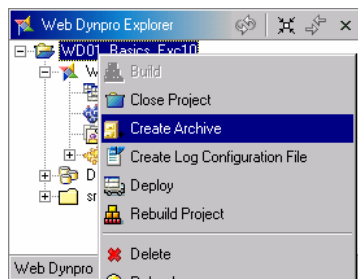
4-2 Reload the project in SAP NetWeaver Developer Studio and recreate the archive.



In the Web Dynpro Explorer:

Open the context menu of the project *WD01_Basics_I18N*.

Choose *Rebuild Project*.



Open the context menu of the project *WD01_Basics_I18N* again.

Choose *Create Archive*.

4-3 Create a Web Dynpro application

In the Web Dynpro Explorer, expand the node *WD01_Basics_I18N*.
Expand the node *Web Dynpro* and open the context menu for *Applications*.

To open the wizard, choose *Create Application*.

In the wizard, enter:

Name	WD01_Basics_I18N
Package	com.sap.training.wd.basics.i18n

Accept the other suggested values and choose *Next*.

Select *Use existing component* and choose *Next*.

Select

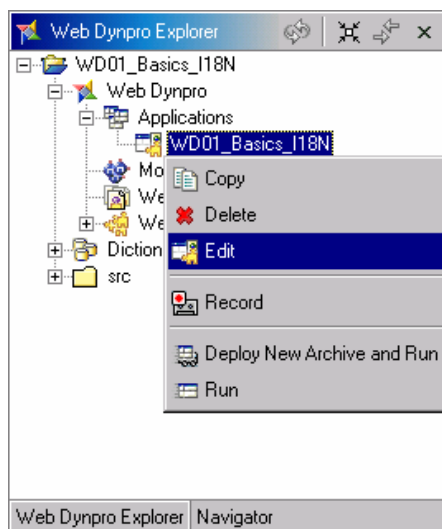
Web Dynpro Component	Exc_I18N
Interface View	Exc_I18N_WindowInterfaceView
Startup Plug	Default

and choose *Finish*.

Successful result:

The generated Web Dynpro application object completes your project structure.
You can now deploy your project and start your Web Dynpro application.
WD01_Basics_I18N enables you to address the Web application as a whole,
when you launch this complete application in the next step

4-4 Define language-specific application properties



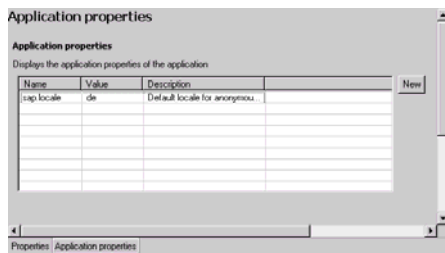
To define *DefaultLocale*, proceed as follows:

In the Web Dynpro Explorer:

Open the context menu of application *WD01_Basics_I18N* and choose *Edit*.

Select the tab *Application Properties*.
Choose *New*.

In the next dialog box, choose *Browse*.
In the next dialog box, select *DefaultLocale*, then choose *OK*.



In the field *Value*, enter **en**

Confirm by selecting *Finish*.

This defines English as the default language.

Save the new project data by choosing *Save All Metadata* from the toolbar.

5 Building, Deploying, and Running, Step-by-Step

5-1 Deploy and run the Web Dynpro application.

In the Web Dynpro Explorer:

Expand the nodes *WD01_Basics_I18N / Web Dynpro / Applications*.

Open the context menu for *WD01_Basics_I18N*.

To deploy and run the application, choose *Deploy new Archive and Run*

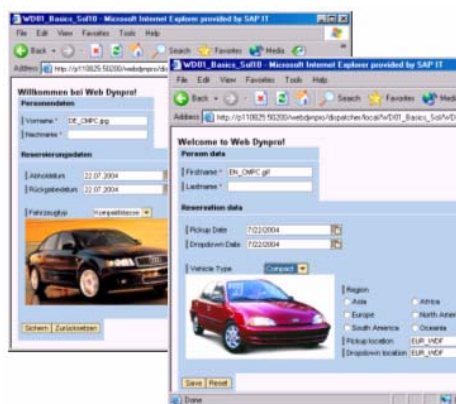
5-2 Make language settings in the web browser

In the Web browser, add the languages English and German.

You can set the language by choosing *Menu/Internet Options*. On the tab *General*, choose *Languages*. You can now add and delete languages.

Start the application again

Successful result:



As a result of this exercise, you can execute the Web Dynpro application using different languages.