

WORKFLOW (Part 1)

By Swarna.S , Tata Consultancy Services

Workflow is nothing but the path a process takes based on a certain set of procedural rules. They may be very simple as approvals or rejections or very complex as getting many levels of approvals based on conditions for the release of a purchase order where many departments are involved.

Workflow Builder is to create, display and change a workflow. Transaction code is SWDD.

A **Workflow instance** is nothing but a single run of the workflow.

Tasks are the steps performed in the process either by the software automatically or by the people.

A **Work item** is the task instance that is performed as a single workflow step.

Work Flow Container is the place where all the data used in the workflow is collected.

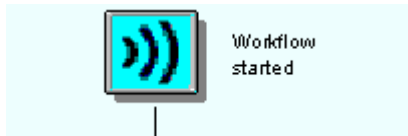
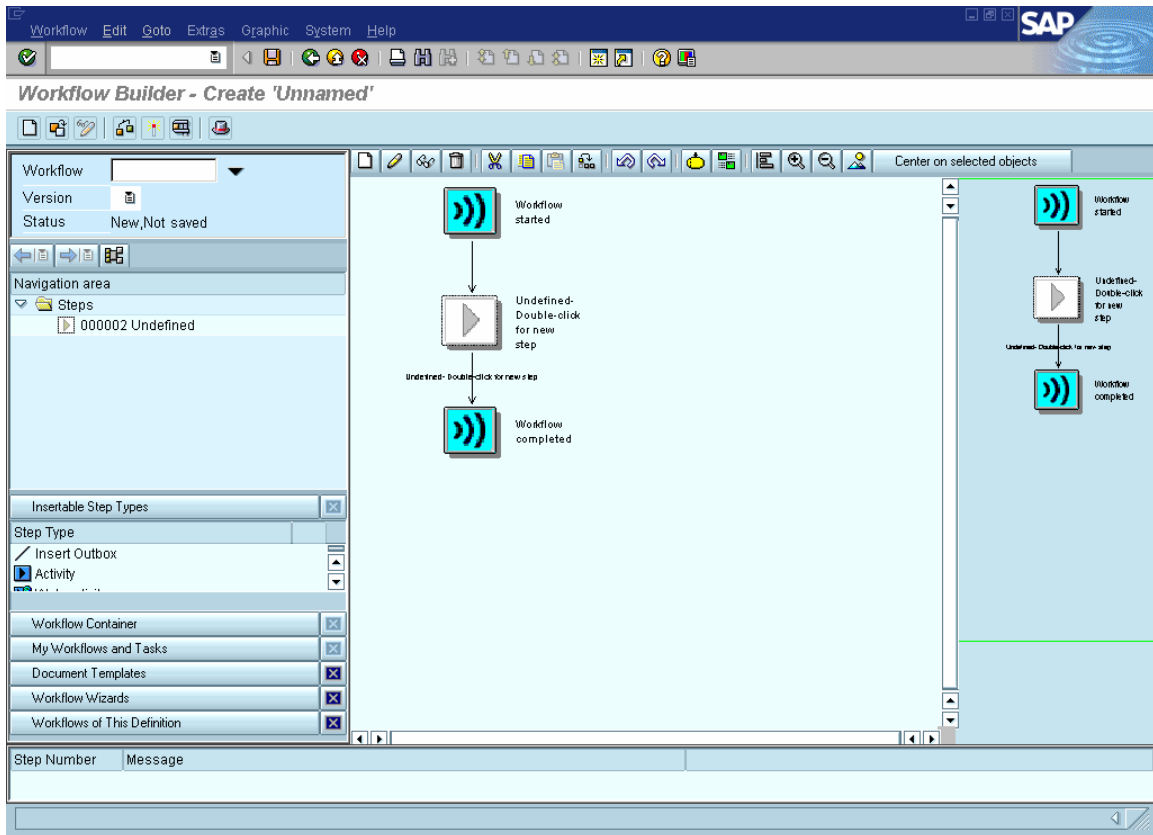
Binding is the set of rules that define which data is passed to which part of the process.

Building a very simple workflow with user decision:

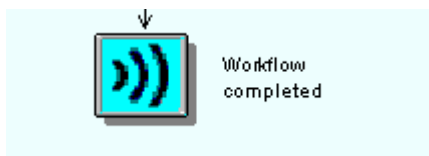
Step 1.

Go to the workflow builder.

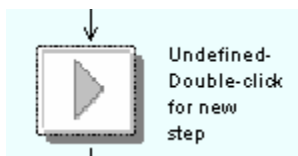
The transaction code is **SWDD**.



→ The start of the workflow definition



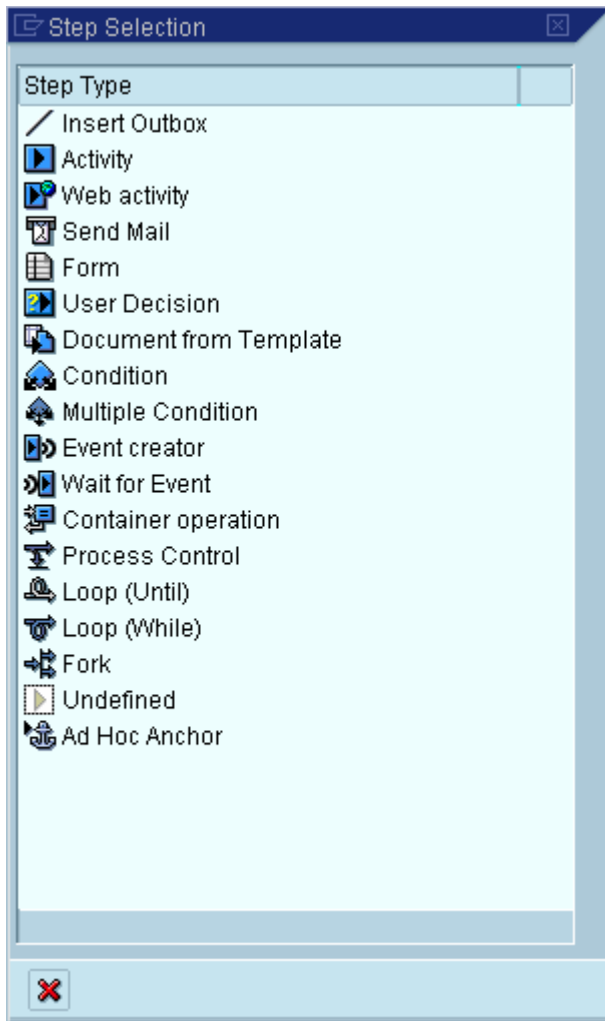
→ The completion of a workflow definition



→ Area to insert a new workflow definition

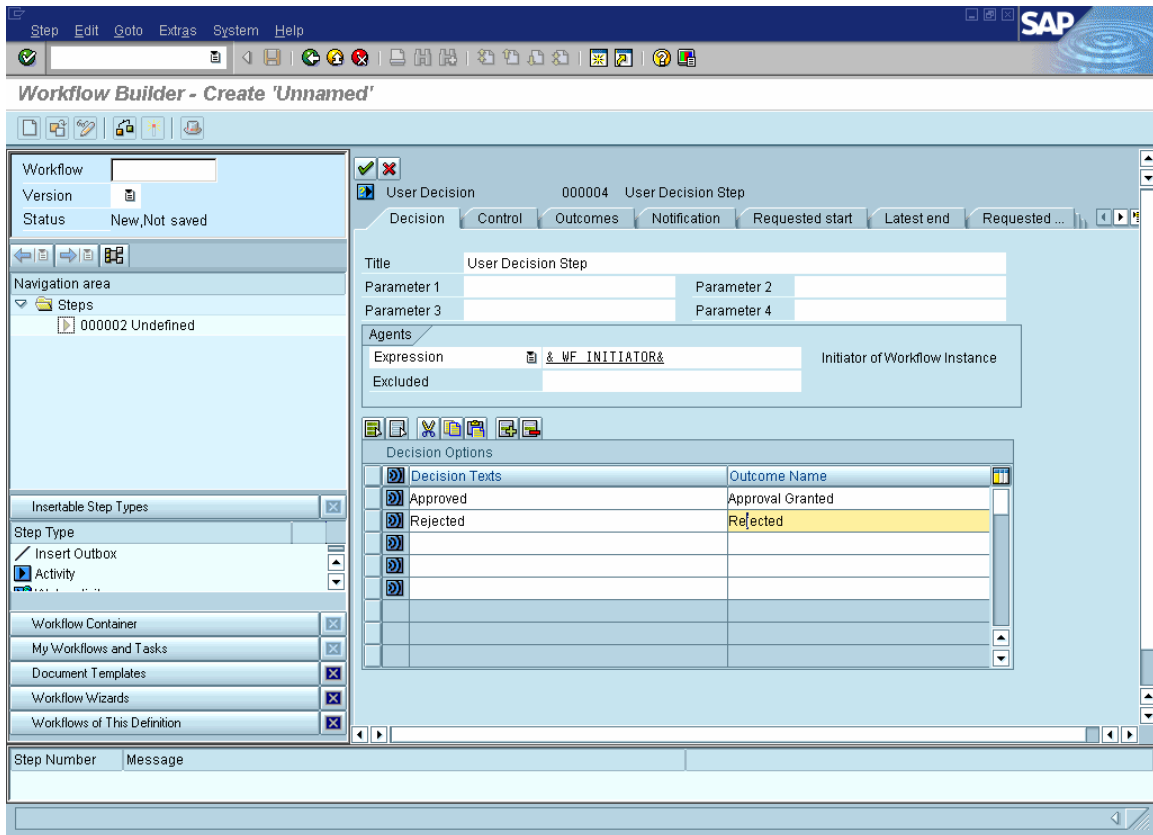
Step 2

On double clicking the undefined icon as shown above a new POP UP appears.




Step 3

Select the User Decision and we get the User decision window

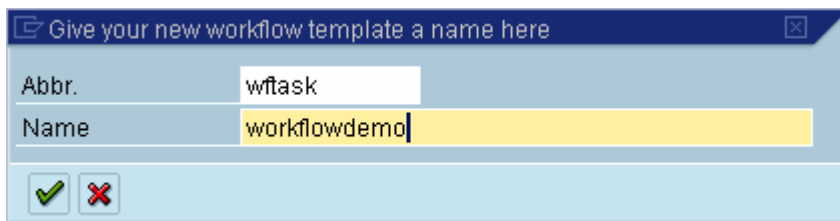


Let us suppose that the decision making is intended for the creator of this workflow. &_WF_INITIATOR& contains the value who executed the workflow. Since this is a test object, we are using &_WF_INITIATOR&. But we wouldn't be using this variable in real time scenarios.

Now select  **Transfer and to graphic** button.

Step 4

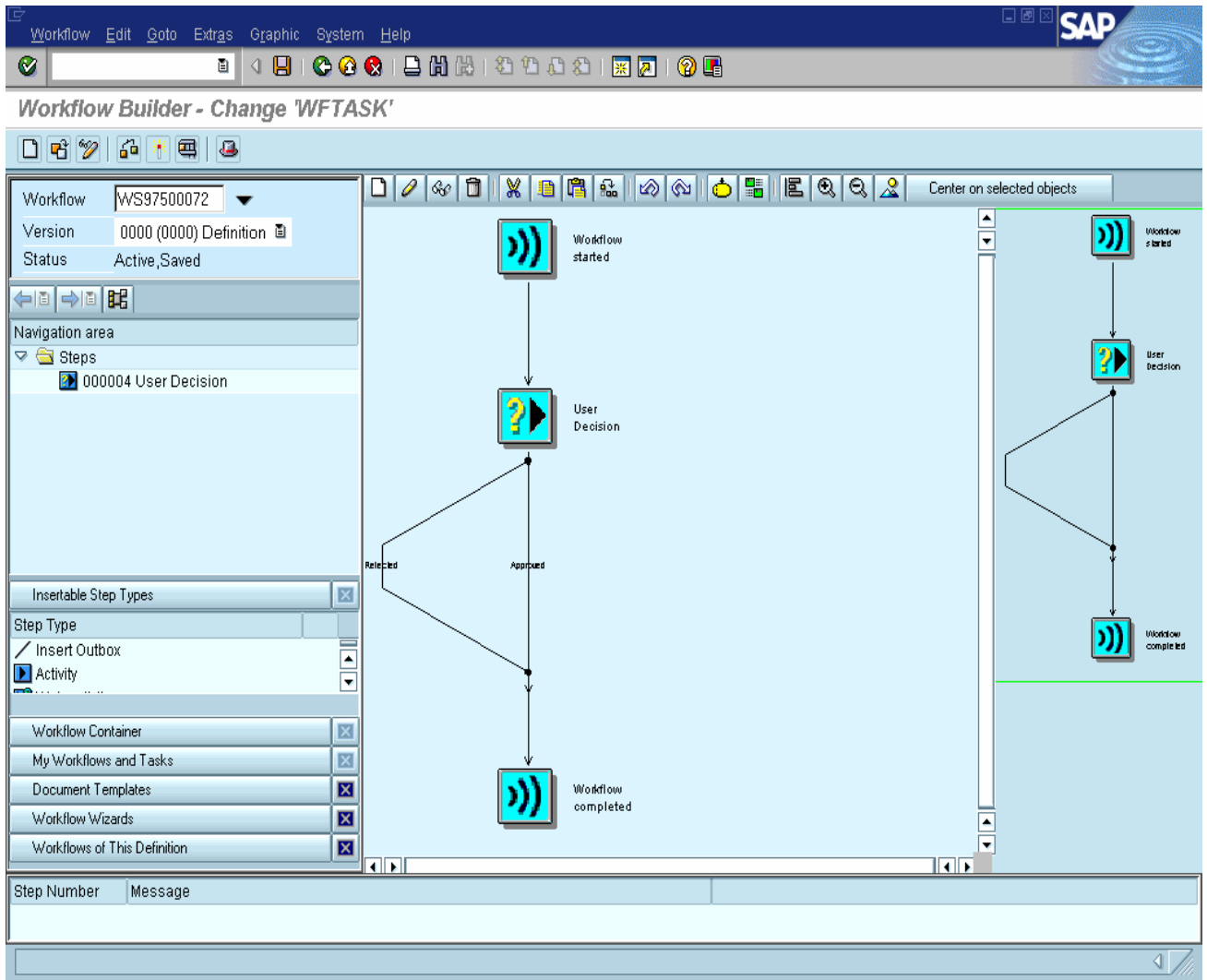
A pop up appears asking for the workflow name.



Now enter the package either an own package name or as a local object.

A number is assigned to the workflow starting with WS and number following it.

Now save your workflow. After saving, a number is assigned to your workflow starting with WS, as shown in the below screenshot.



SAVE, CHECK AND ACTIVATE YOUR WORKFLOW.