

KL01 - Create Activity Type

Functionality

Activity types are activities provided by a cost center. They are measured in units of time or quantity. Activity quantities are valued using a price. For e.g. Activity types are used to allocate machine cost from Machine cost center to the production orders.

A product is being produced in a cost center called as Labour cost center. The activity provided by the cost center to the product is labour hours. The cost center costs will be allocated using activity type to the product. Planned and actual hours are recorded as activity quantities. The quantity i.e. labour hours multiplied by the price will be allocated to the production order. A secondary cost element of type 43 is attached to the activity type.

Scenario

An activity type for Labour hours needs to be created.

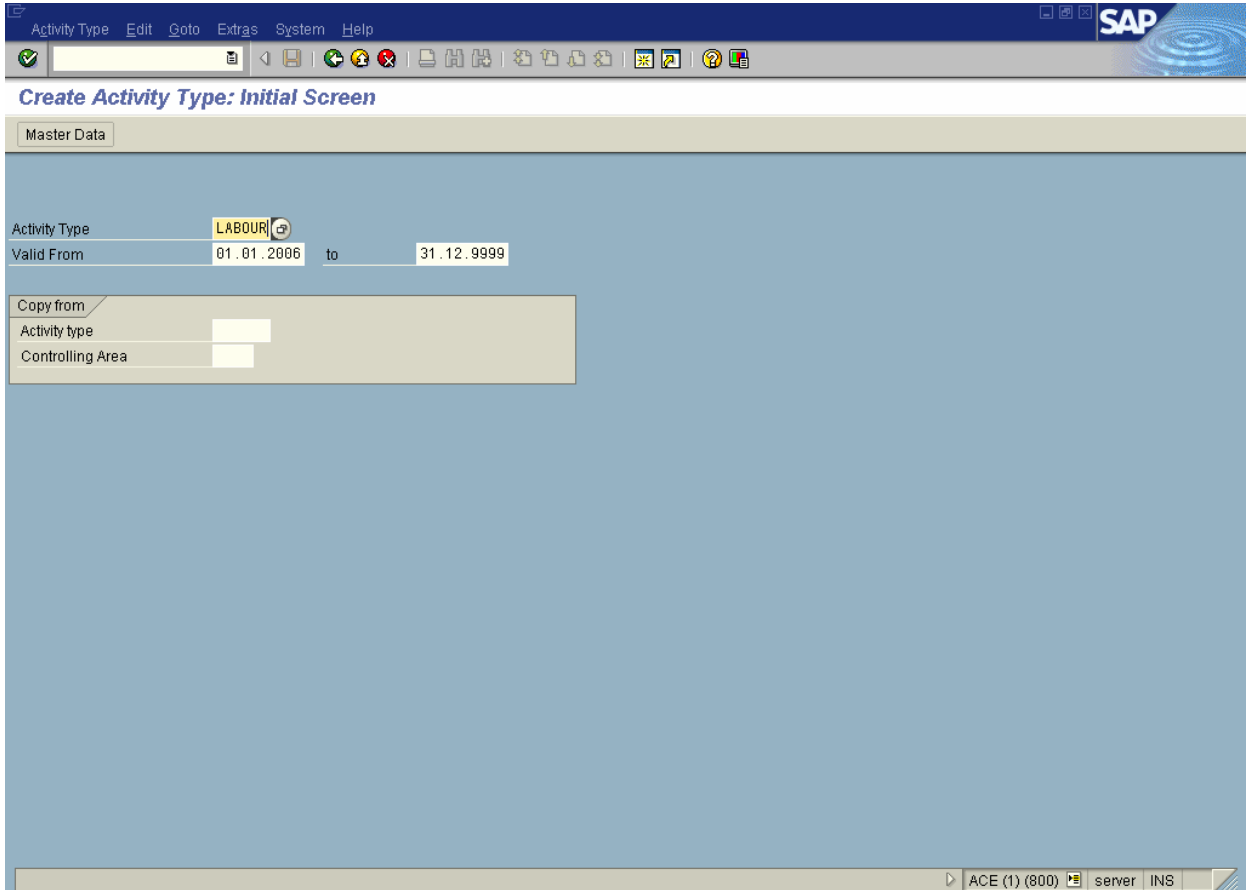
Requirements

Secondary cost element of type 43 must be created before creating activity type.

Menu Path	Accounting → Controlling → Cost Center Accounting → Master Data → Activity Type → Individual Processing → KL01 - Create
Transaction Code	KL01

COST CENTER ACCOUNTING END USER TRAINING DOCUMENTS

1. Double Click on **KL01 - Create**

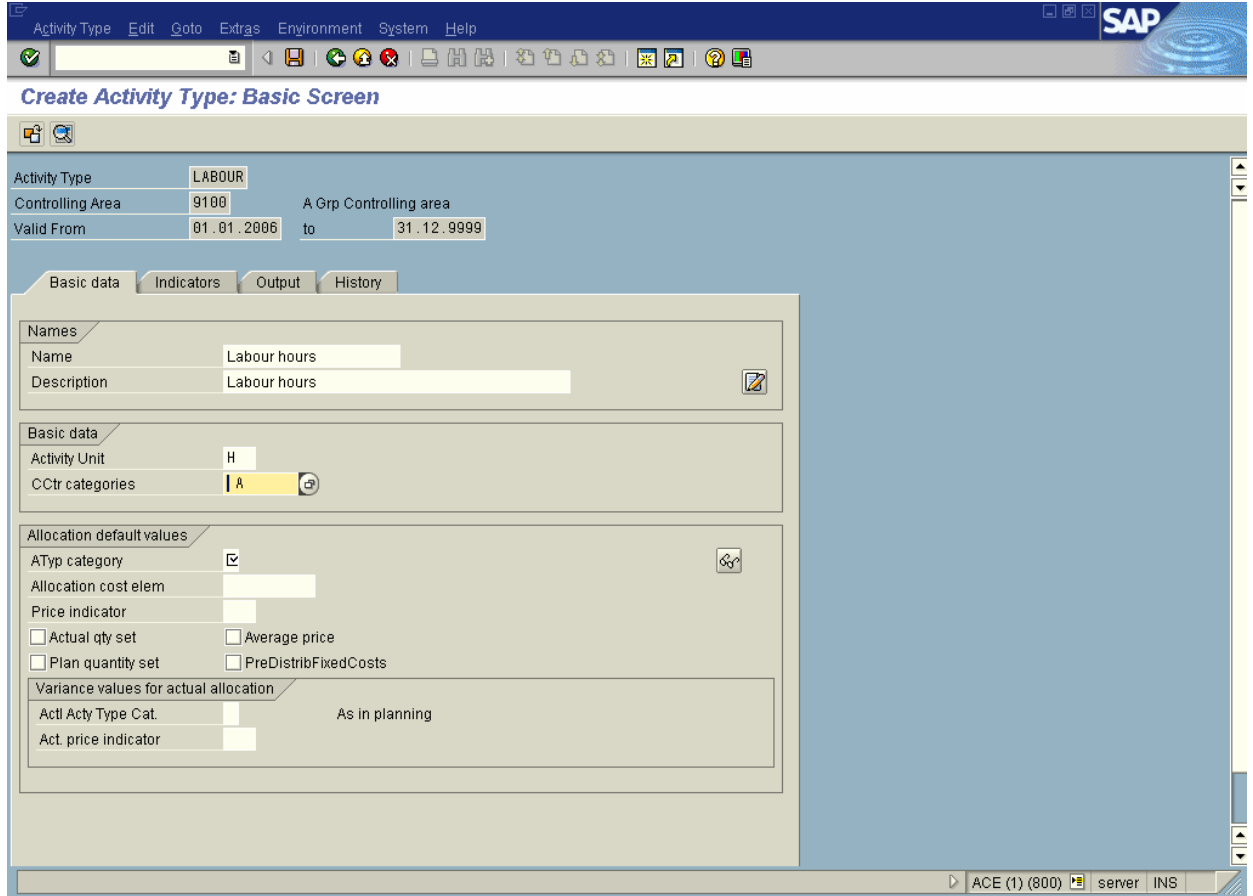


2. Update the following fields:

Field Name	Field Description	Values
Activity type	Activity types describe the activity produced by a cost center and are measured in units of time or quantity.	LABOUR
Valid from	Valid from date field	01.01.2006
To	Valid to date field	31.12.9999

3. Click **Enter** 

COST CENTER ACCOUNTING END USER TRAINING DOCUMENTS



4. Update the following fields:

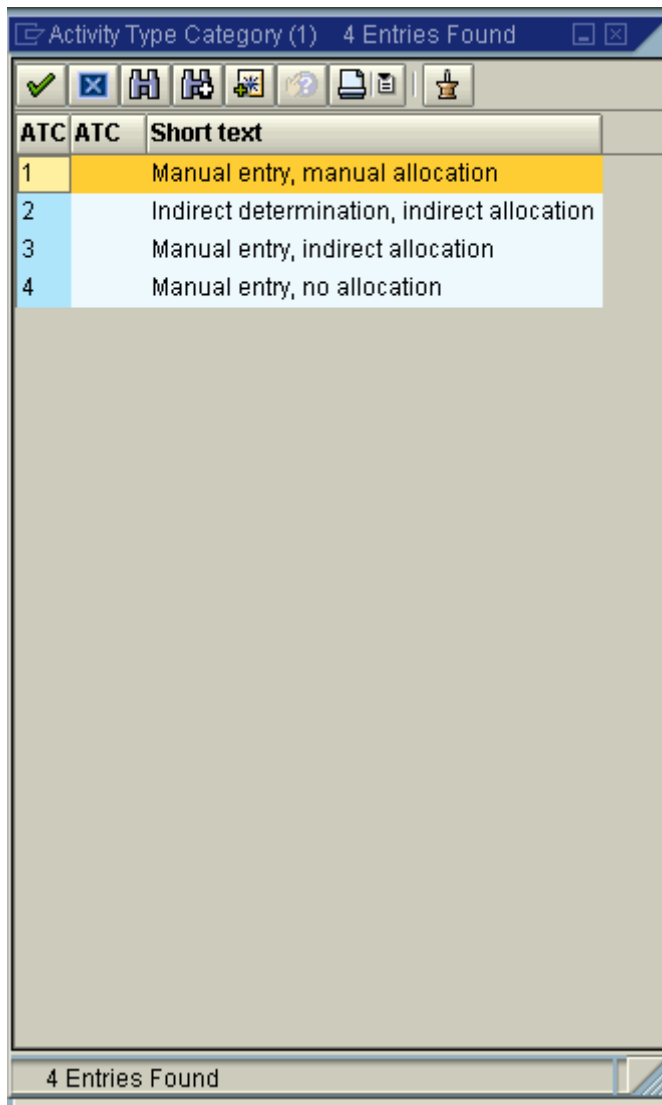
Field Name	Field Description	Values
Name	Description of the Name.	Labour hours
Description	Brief text description of the run schedule	Labour hours
Activity unit	Description of the Activity unit.	H

5. Click **CCtr categories** Button .

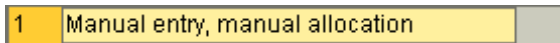
COST CENTER ACCOUNTING
END USER TRAINING DOCUMENTS

6. Click **Activity Type Category** Button .

COST CENTER ACCOUNTING
END USER TRAINING DOCUMENTS



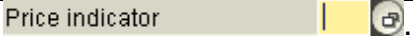
7. Select **1 - Manual entry, manual allocation** in list box.



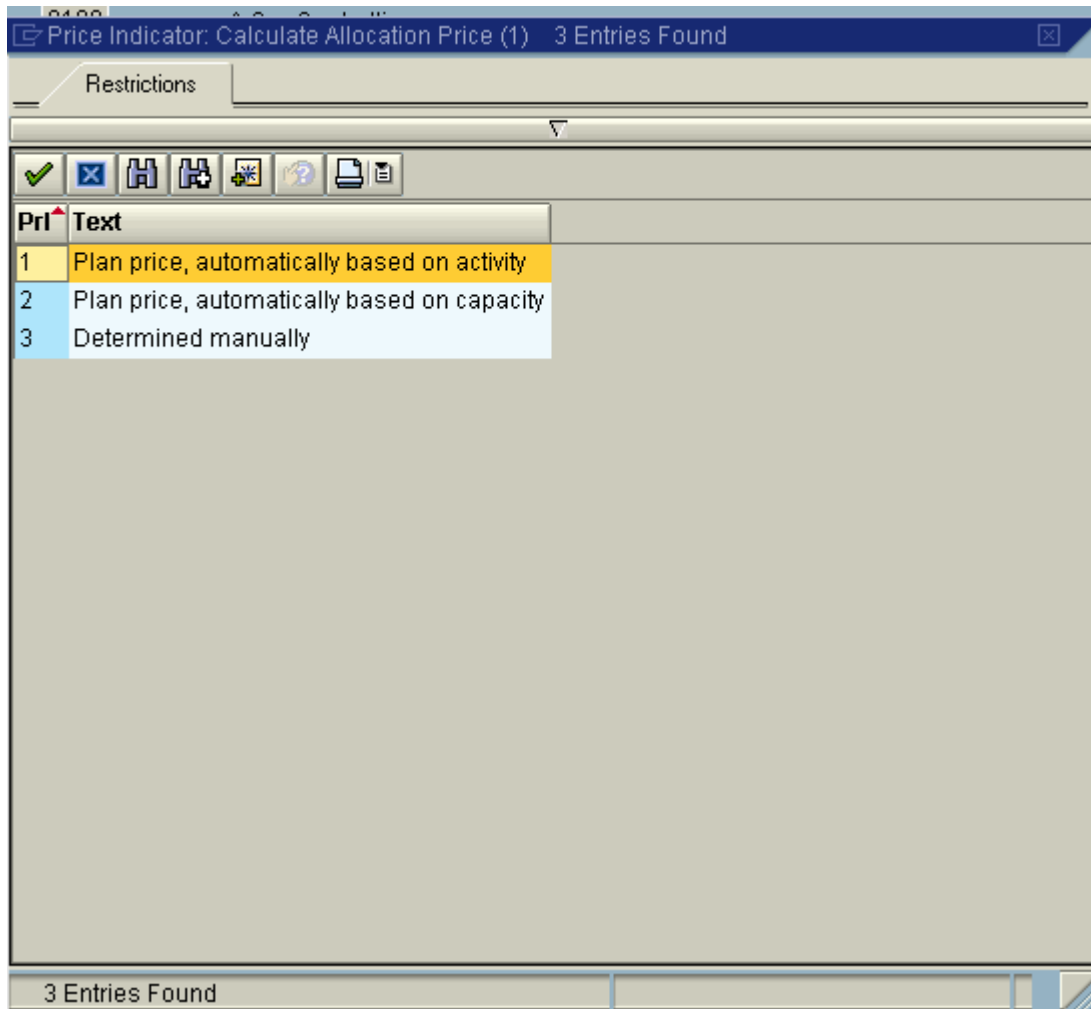
8. Update the following fields:

Field Name	Field Description	Values
Allocation cost element	The allocation cost element is a secondary cost element , under which the activity type or business process is allocated.	943202

**COST CENTER ACCOUNTING
END USER TRAINING DOCUMENTS**

9. Click **Price indicator** Button .

**COST CENTER ACCOUNTING
END USER TRAINING DOCUMENTS**



10. Select **1** Plan price, automatically based on activity

Note: Indicator showing how SAP calculates the price of activity type for a cost center..

11. Click <checkbox> **Average price** Average price. Indicator determining that activity prices for cost centers/activity types remain constant for the entire fiscal year.

12. Click the **Enter**  button.

**COST CENTER ACCOUNTING
END USER TRAINING DOCUMENTS**

13. Update the following fields:

Field Name	Field Description	Values
Act Act typ cat	Act Act typ cat	1
Act. Price indicator	Act. Price indicator	5

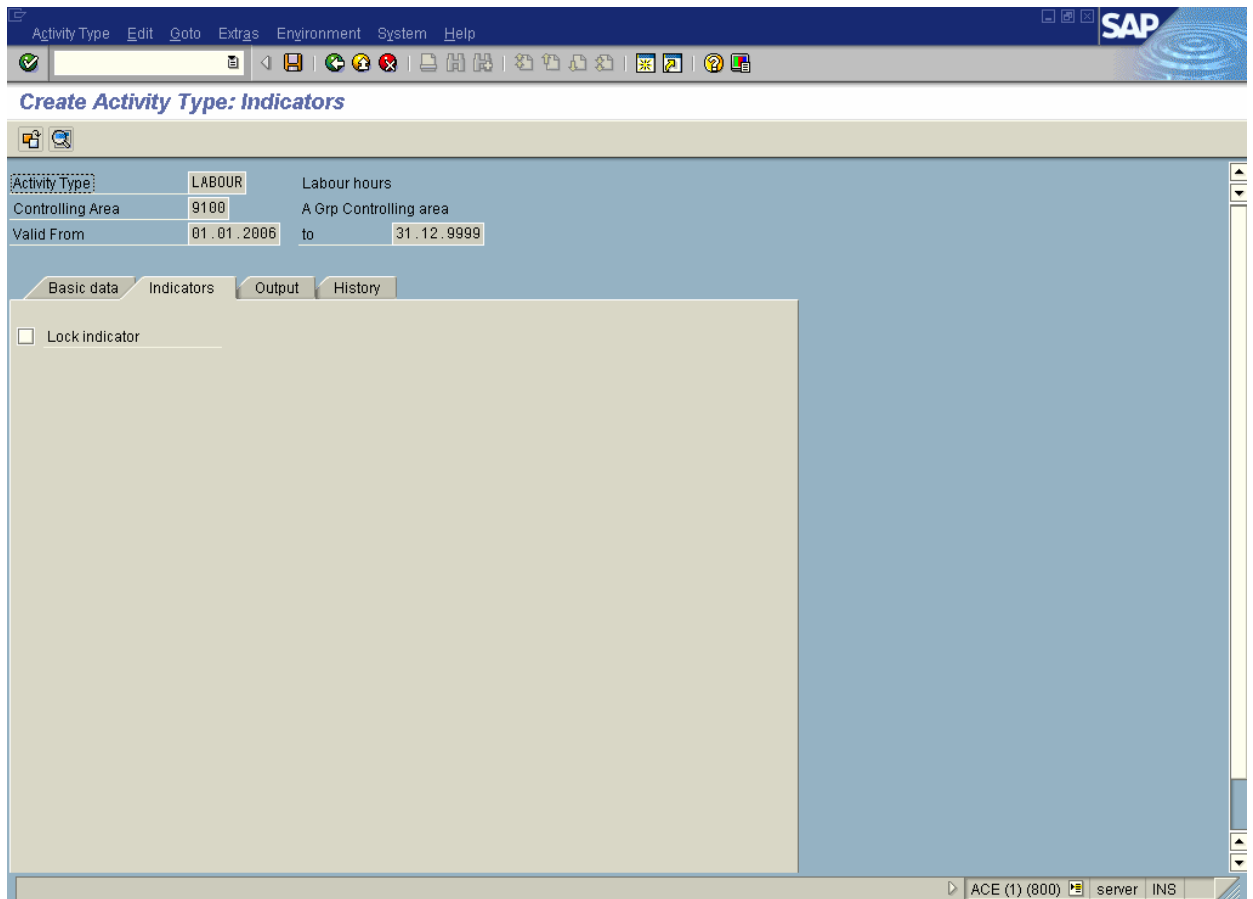
The screenshot shows the SAP 'Create Activity Type: Basic Screen' interface. The top menu bar includes 'Activity Type', 'Edit', 'Goto', 'Extras', 'Environment', 'System', and 'Help'. The title bar reads 'Create Activity Type: Basic Screen'. The main content area is divided into several sections:

- Activity Type:** LABOUR, Labour hours
- Controlling Area:** 9100, A Grp Controlling area
- Valid From:** 01.01.2006 to 31.12.9999
- Names:** Name: labour hours, Description: Labour hours
- Basic data:** Activity Unit: H (Hour), CCtr categories: A
- Allocation default values:**
 - AType category: 1 (Manual entry, manual allocation)
 - Allocation cost elem: 943202 (Labour hours)
 - Price indicator: 1 (Plan price, automatically based on activity)
 - Actual qty set, Average price
 - Plan quantity set, PreDistribFixedCosts
- Variance values for actual allocation:**
 - Actl Acty Type Cat: 1 (Manual entry, manual allocation)
 - Act. price indicator: 5 (Actual price, automatically based on activity)

The 'Indicators' tab is highlighted in the bottom navigation bar.

14. Click <tab button> **Indicators** .

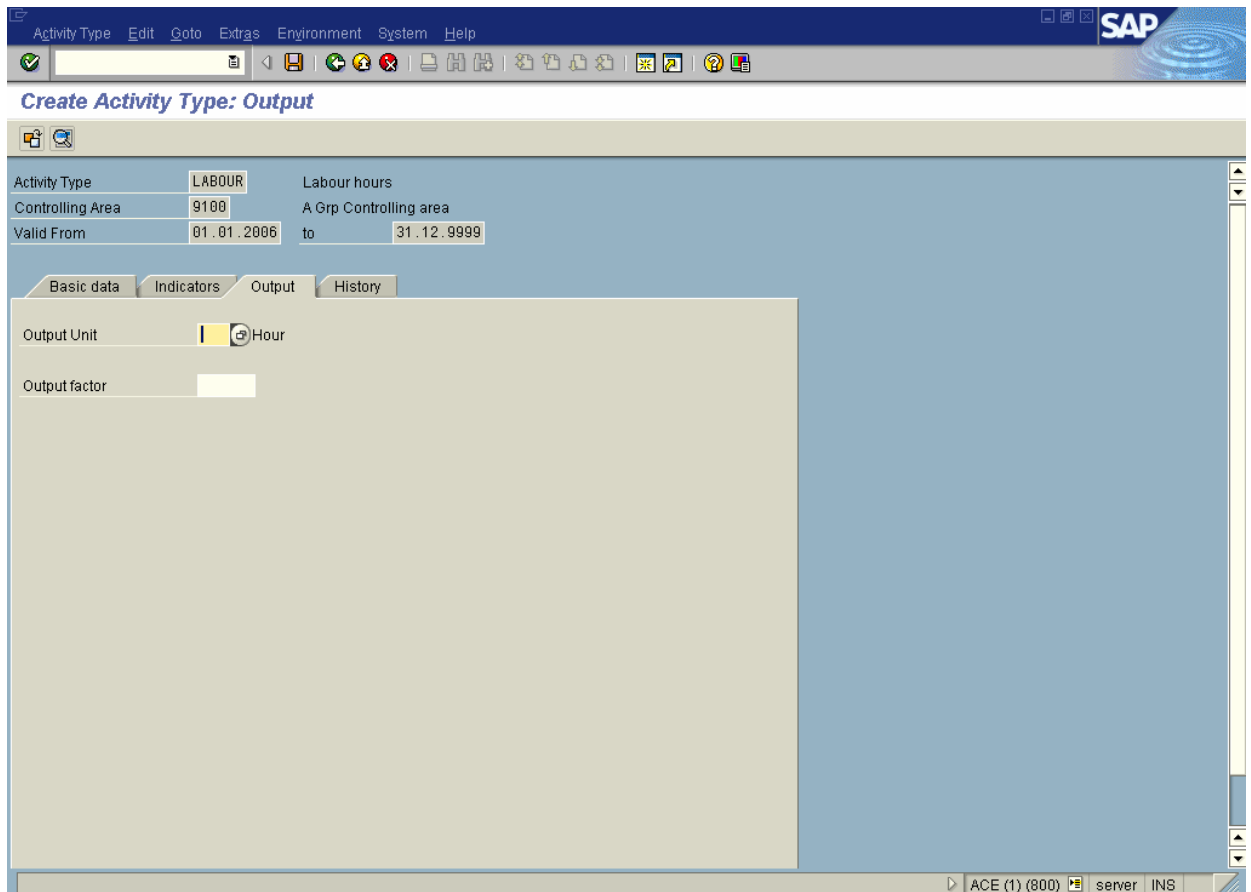
COST CENTER ACCOUNTING END USER TRAINING DOCUMENTS



Note: *This screen controls activity type locking.*

15. Click the **Enter**  button.
16. Click <tab button> **Output** .

COST CENTER ACCOUNTING END USER TRAINING DOCUMENTS



The screenshot shows the SAP 'Create Activity Type: Output' screen. The title bar includes 'Activity Type', 'Edit', 'Goto', 'Extras', 'Environment', 'System', and 'Help'. The SAP logo is in the top right corner. The main content area is titled 'Create Activity Type: Output' and contains the following fields:

Activity Type	LABOUR	Labour hours
Controlling Area	9100	A Grp Controlling area
Valid From	01.01.2006	to 31.12.9999

Below these fields are four tabs: 'Basic data', 'Indicators', 'Output', and 'History'. The 'Output' tab is selected, showing 'Output Unit' set to 'Hour' and 'Output factor' as an empty field. The status bar at the bottom right displays 'ACE (1) (800) server INS'.

Note: *There are no required fields to be entered.*

17. Click the **Enter**  button.

18. Click **Save** 