

**COST CENTER ACCOUNTING**  
**END USER TRAINING DOCUMENTS**

## **KSVB - Execute Plan Costs Distribution**

### **Functionality**

Distribution is a method of allocation of cost from one cost center to another using primary cost elements.

### **Scenario**

This transaction is used to execute plan distribution costs.

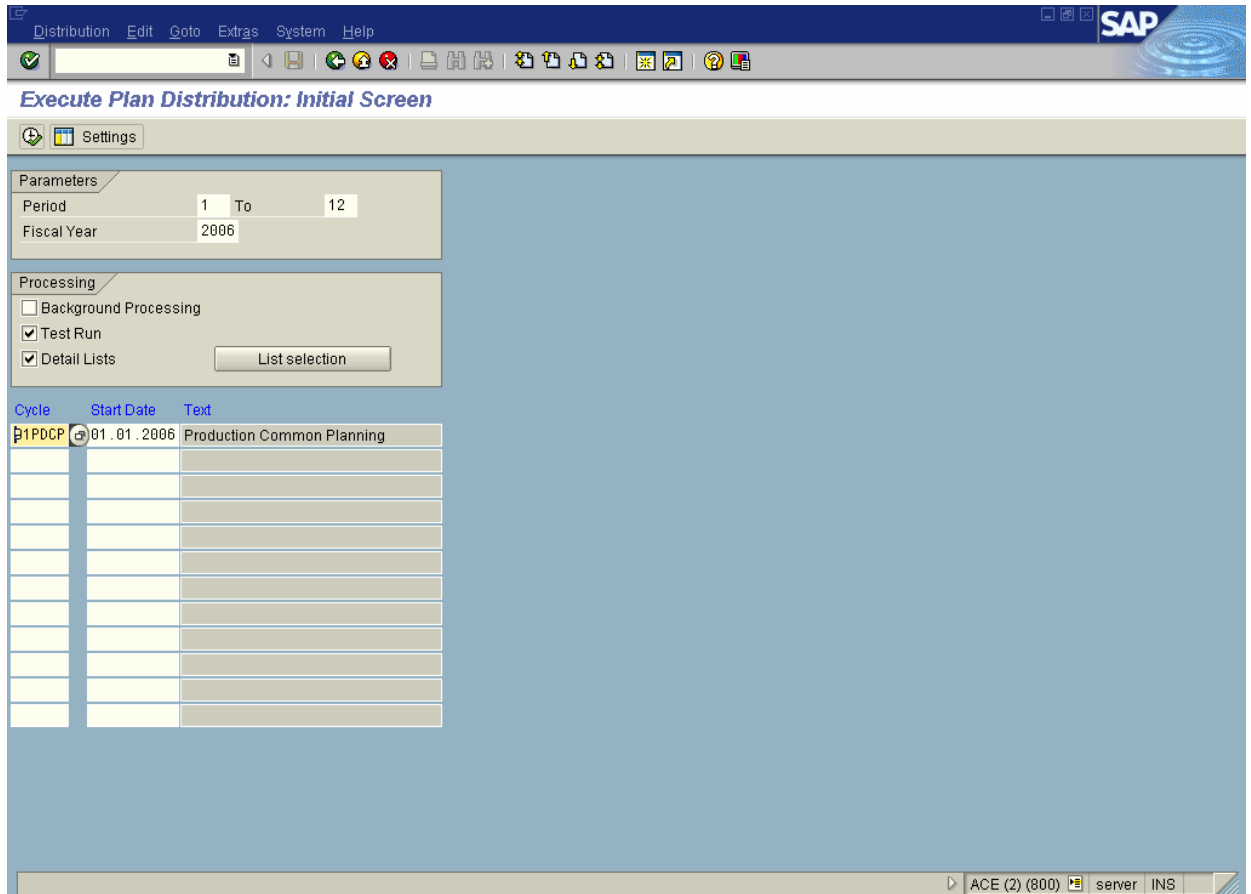
### **Requirements**


Planned costs have been entered on the sender cost center.

<b>Menu Path</b>	Accounting → Controlling → Cost Center Accounting → Planning → Allocations → KSVB - Distribution
<b>Transaction Code</b>	KSVB

1. Double Click on **KSVB - Distribution**

# COST CENTER ACCOUNTING END USER TRAINING DOCUMENTS



2. Click **Test run**  Test run.
3. Click **Execute** .

# COST CENTER ACCOUNTING END USER TRAINING DOCUMENTS

The screenshot shows the SAP 'Display CCA: Plan Distribution Basic List' window. The title bar includes 'List Edit Goto Tools Settings System Help' and the SAP logo. Below the title bar is a toolbar with icons for navigation and actions. The main content area displays the following data:

Controlling Area 9100  
Version 0  
Period 001 To 012  
Fiscal Year 2006  
Value date 01.01.2006  
Exchange rate type P Standard translation for cost planning  
Document Number 12  
Processing status Update Run

Processing completed without errors

Cycle	Start Date	Text	P	Senders	Number of receivers	No. of messages
91PDCP	01.01.2006	Production Common Planning	1	6	12	0

The status bar at the bottom right shows 'ACE (2) (800) server INS'.

4. Click 

91PDCP	01.01.2006	Production Common Pla
--------	------------	-----------------------

5. Click  Sender

# COST CENTER ACCOUNTING END USER TRAINING DOCUMENTS

SAP

List Edit Goto Tools Settings System Help

---

**Display CCA: Plan Distribution Sender List**

Basic list Segments Receiver

Cycle 91PDCP Production Common Planning  
 Start Date 01.01.2006  
 Period 001 To 012

Invalid	Period	Cost Ctr	Cost Elem.	CO Area	Currency	COCr	Sender TF
	1	9101000	420003		3,750.00-	EUR	100.00
	1	9101000	420006		750.67-	EUR	100.00
	1	9101000	420010		60.60-	EUR	100.00
	1	9101000	420011		65.15-	EUR	100.00
	1	9101000	420211		73.18-	EUR	100.00
	1	9101000	420401		135.00-	EUR	100.00
*	1				4,834.60-	EUR	
	2	9101000	420003		3,750.00-	EUR	100.00
	2	9101000	420006		750.67-	EUR	100.00
	2	9101000	420010		60.60-	EUR	100.00
	2	9101000	420011		65.15-	EUR	100.00
	2	9101000	420211		73.18-	EUR	100.00
	2	9101000	420401		135.00-	EUR	100.00
*	2				4,834.60-	EUR	
	3	9101000	420003		3,750.00-	EUR	100.00
	3	9101000	420006		750.67-	EUR	100.00
	3	9101000	420010		60.60-	EUR	100.00
	3	9101000	420011		65.15-	EUR	100.00
	3	9101000	420211		73.18-	EUR	100.00
	3	9101000	420401		135.00-	EUR	100.00
*	3				4,834.60-	EUR	
	4	9101000	420003		3,750.00-	EUR	100.00
	4	9101000	420006		750.67-	EUR	100.00
	4	9101000	420010		60.60-	EUR	100.00
	4	9101000	420011		65.15-	EUR	100.00
	4	9101000	420211		73.18-	EUR	100.00
	4	9101000	420401		135.00-	EUR	100.00
*	4				4,834.60-	EUR	
	5	9101000	420003		3,750.00-	EUR	100.00
	5	9101000	420006		750.67-	EUR	100.00

ACE (2) (800) server INS

6. Click 

7. Click  Receiver

# COST CENTER ACCOUNTING END USER TRAINING DOCUMENTS

List Edit Goto Tools Settings System Help
SAP

**Display CCA: Plan Distribution Receiver List**

Basic list
Segments

Cycle: 91PDCP    Production Common Planning  
 Start Date: 01.01.2006  
 Period: 001 To 012

Invalid	Period	Cost Ctr	Cost Elem.	CO Area	Currency	COCr	Tracing Factor
	1	9101011	420003		2,250.00	EUR	60.00
	1	9101012	420003		1,500.00	EUR	40.00
	1	9101011	420006		450.40	EUR	60.00
	1	9101012	420006		300.27	EUR	40.00
	1	9101011	420010		36.36	EUR	60.00
	1	9101012	420010		24.24	EUR	40.00
	1	9101011	420011		39.09	EUR	60.00
	1	9101012	420011		26.06	EUR	40.00
	1	9101011	420211		43.91	EUR	60.00
	1	9101012	420211		29.27	EUR	40.00
	1	9101011	420401		81.00	EUR	60.00
	1	9101012	420401		54.00	EUR	40.00
*	1				4,834.60	EUR	
	2	9101011	420003		2,250.00	EUR	60.00
	2	9101012	420003		1,500.00	EUR	40.00
	2	9101011	420006		450.40	EUR	60.00
	2	9101012	420006		300.27	EUR	40.00
	2	9101011	420010		36.36	EUR	60.00
	2	9101012	420010		24.24	EUR	40.00
	2	9101011	420011		39.09	EUR	60.00
	2	9101012	420011		26.06	EUR	40.00
	2	9101011	420211		43.91	EUR	60.00
	2	9101012	420211		29.27	EUR	40.00
	2	9101011	420401		81.00	EUR	60.00
	2	9101012	420401		54.00	EUR	40.00
*	2				4,834.60	EUR	
	3	9101011	420003		2,250.00	EUR	60.00
	3	9101012	420003		1,500.00	EUR	40.00
	3	9101011	420006		450.40	EUR	60.00
	3	9101012	420006		300.27	EUR	40.00

ACE (2) (800) server INS

8. Click